



West Kelowna Transmission Project

City of West Kelowna



April 14, 2026

Agenda

- Introductions
- Community engagement
 - What we did
 - What we heard
- Structured decision making
- Next steps



Introductions

BC Hydro

Mo Khan Project Manager

Jason Kim Assistant Project Manager

Sally MacDonald Stakeholder Engagement

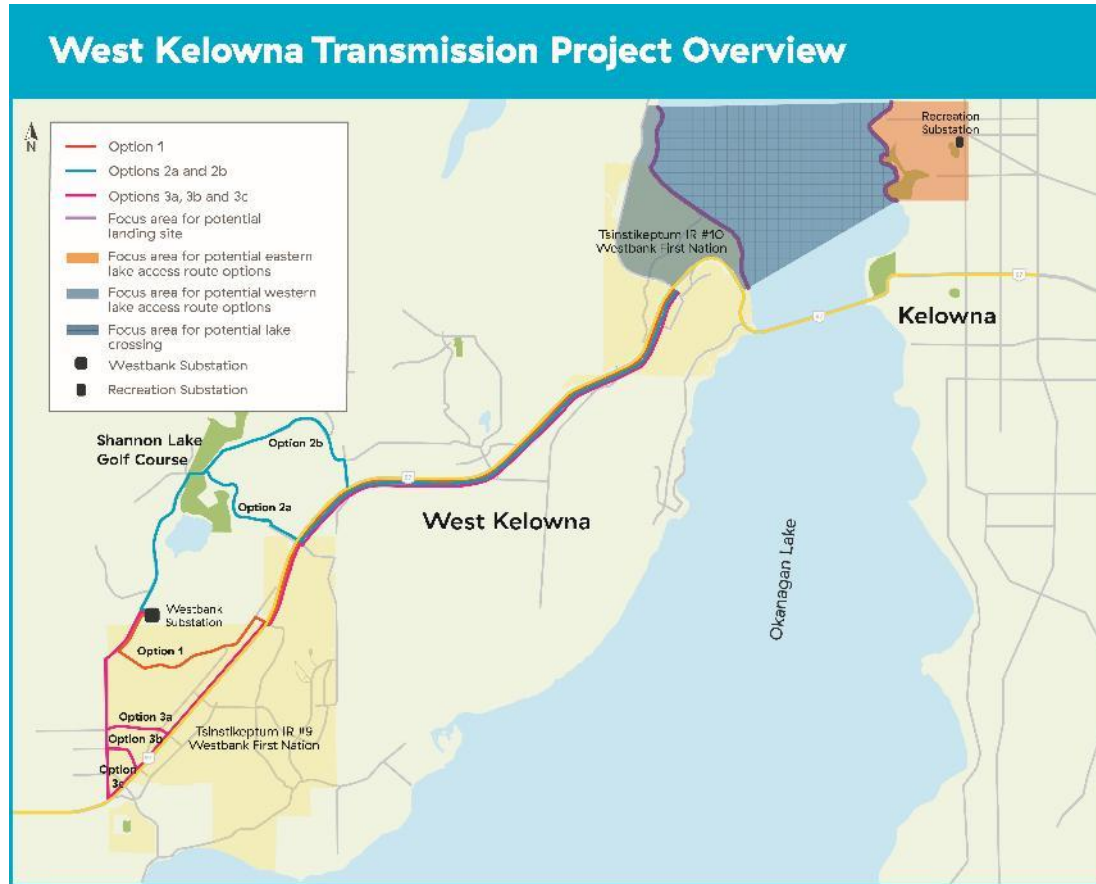
Dag Sharman Community Relations Manager



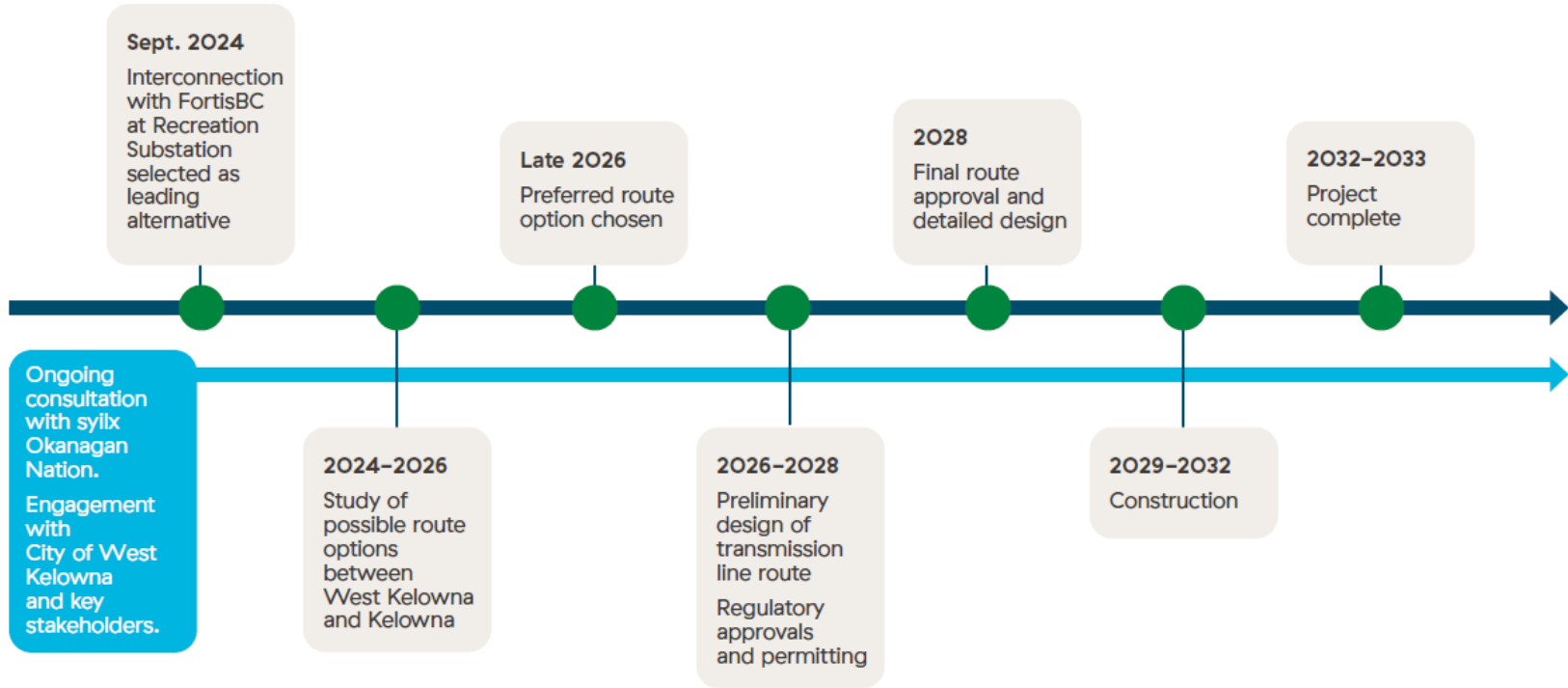
Project update

In 2026, we're seeking to determine a preferred line route for WKTP.

- Segment 1 = Westbank Substation to Hwy 97
- Segment 2 = Along Hwy 97 from Bartley Rd to Westside Rd
- Segment 3 = Hwy 97 to western lake landing
- Segment 4 = eastern lake landing to Recreation Substation



Project Status and Estimated Timeline



Community engagement: what we did

You're invited

West Kelowna Transmission Project and
Westbank Substation Open House



In-person open house Feb. 25

- Over 200 people attended

Virtual open house March 5

- ~50 people attended

Online survey Feb. 25-March 31

- 1,200 responses
- Majority of responses from Shannon Lake residents



Community engagement: what we heard

- Majority of feedback was opposed to #2 Options and favour Option #1
- **Public concerns:**
 - Visual impacts
 - Property values
 - Loss of vegetation
 - Keeping project cost low
- Underground infrastructure preferred



Structured decision-making process

Objective	West Kelowna Route Options					
	1	2a	2b	3a	3b	3c
Minimize Impacts to First Nations						
Impacts to Westbank First Nation lands	We are working in collaboration with Westbank First Nation and sylix Okanagan Nation to understand project impacts.					
Impacts to sylix Okanagan Nation territory						
Minimize Impacts to stakeholders						
Impacts to property owners	We need your input! Share your thoughts on these route options to help inform our decision.					
Feedback from Public						
Impacts to the City of West Kelowna	We're working with the City of West Kelowna council and staff to determine impacts to city infrastructure and development potential					
Minimize environmental impacts						
Route segment length	4.5 km	4.4 km	4.5 km	5.9 km	6.4 km	7 km
Potential Impact to ground water	●	●	●	●	●	●
Stream crossings	●	●	●	●	●	●
Minimize total costs						
Estimated costs	We'll develop cost estimates as we advance early design decisions.					

● Better ● Moderate ● Worse

All routing options provide the same system reliability and minimize safety risks.

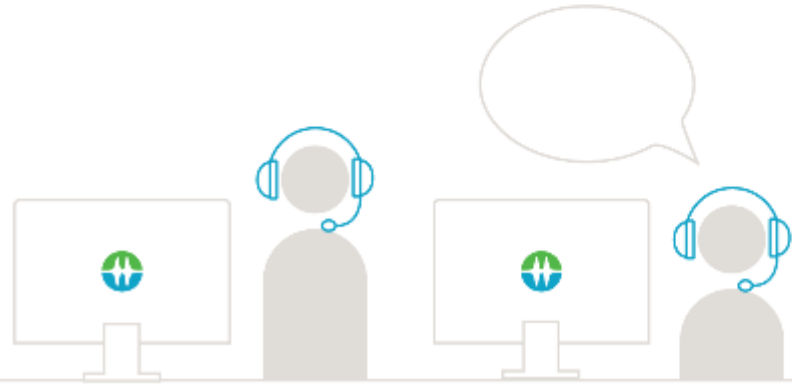


Next steps

- Community consultation summary released later in April
- Council's formal input requested by early May
- This summer we'll determine a preferred route option for Segment 1 (Westbank Substation to Highway 97)
- In the fall, we'll hold further community engagement about the remaining route phases
- We'll meet with staff for early input on these phases



Questions?





Overhead example



Overhead example

