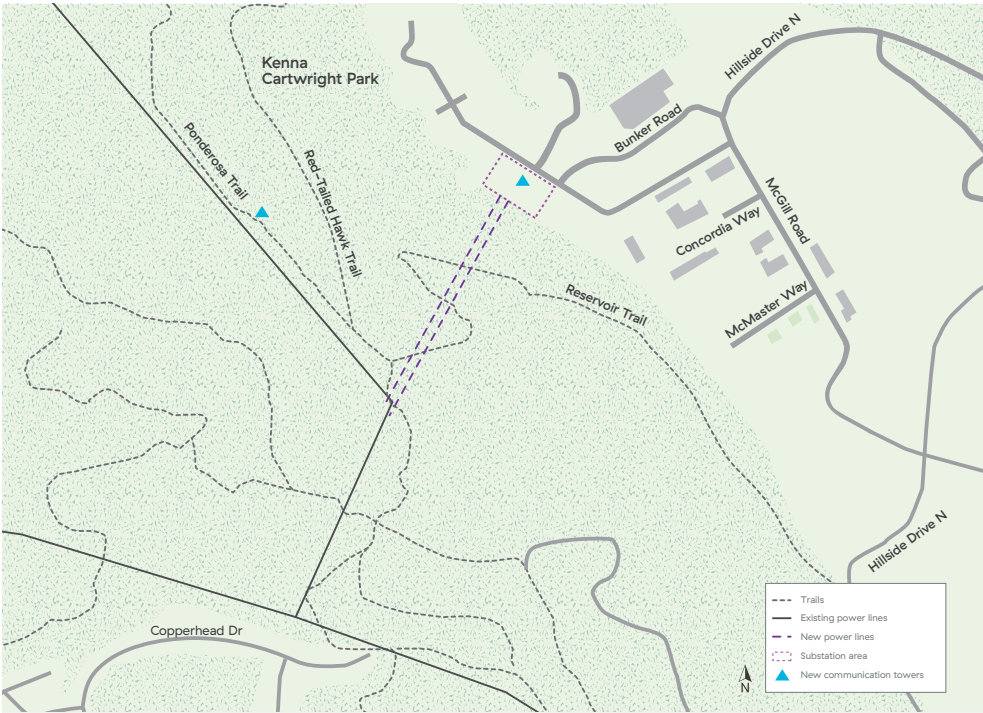


# New West Kamloops Substation Project Update

## Construction in Kenna Cartwright Park

Construction is underway for the new power lines' 30—35 metres steel structures. Stringing of the lines will take place May through June. We'll also install another power line for distribution this year. Work continues on the new 12 metre communication tower in the park.



Access to our construction areas is mainly from Cooperhead Road.

### IMPORTANT!

To ensure your safety and that of our crews, avoid any fenced areas and please follow posted construction signs or directions provided by the on-site crews.



Steel pipe part of foundation for power line structure

## Schedule\*

| Activity   | Planned Start |
|--|---------------|
| Substation site preparation                                  | Completed     |
| Clearing of trees for the new lines and communications tower | Completed     |
| Substation construction                                      | Underway      |
| Construction of power lines                                  | Underway      |
| Substation in-service  | December 2018 |
| Duct bank work completed                                     | January 2019  |

\*subject to change

Kamloops is growing. More people and businesses mean a need for more power.

This substation will ensure we continue to provide a clean reliable supply of electricity to Kamloops.

### Where can you find more information?

Project updates can be found at [bchydro.com/westkamsub](http://bchydro.com/westkamsub).  
Comments or questions? Email: [projects@bchydro.com](mailto:projects@bchydro.com)  
Phone: 1 866 647 3334



## Substation Construction



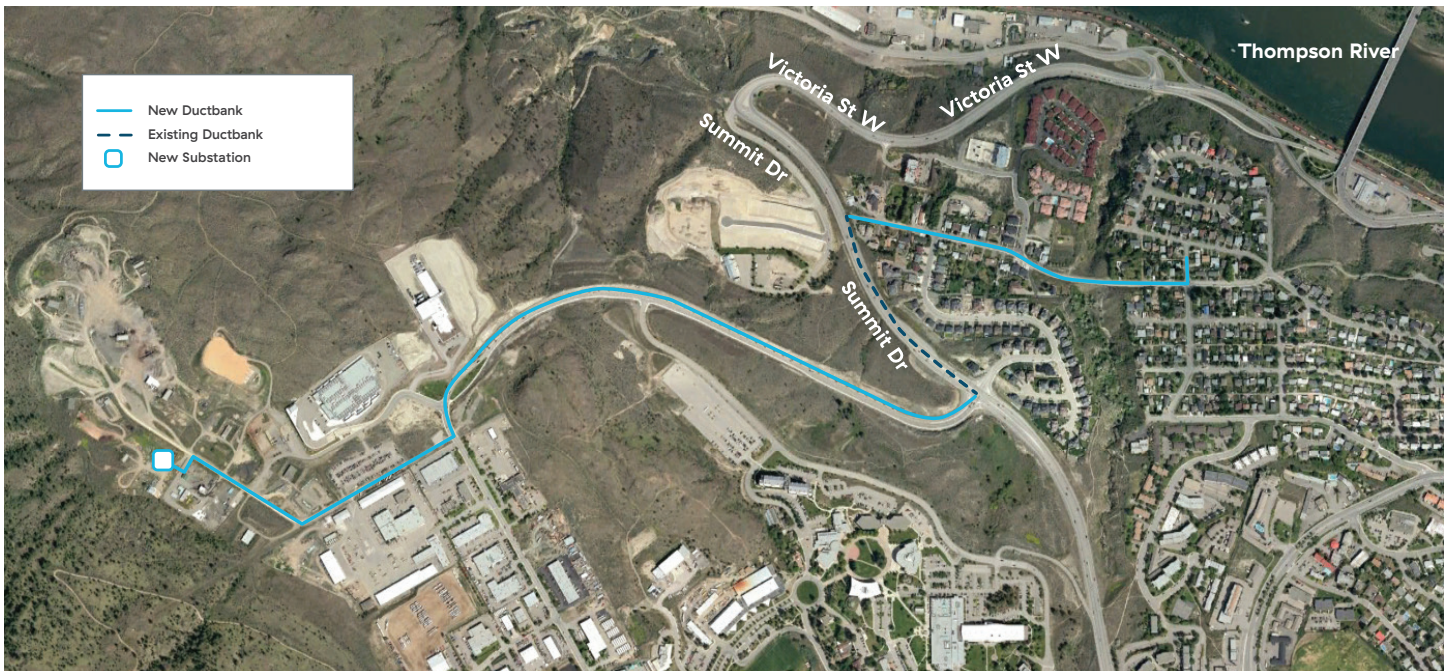
Steel structures looking east



Overall site looking east

The communication tower has been erected and work continues on the electrical equipment and steel structures to support the power lines that will connect the substation to the electrical system.

The Control Building, the brain of the substation, has been built and work continues inside. Two transformers, the heart of the substation, have been delivered and installed.



## City street work

In late summer/early fall, we'll construct underground duct banks for cables that will connect the substation to the West End neighbourhood.