

Victoria to Esquimalt Cable Replacement Project – Community Construction Report #13

May 2026

Prepared by Stephen Watson

Email: steve.watson@bchydro.com

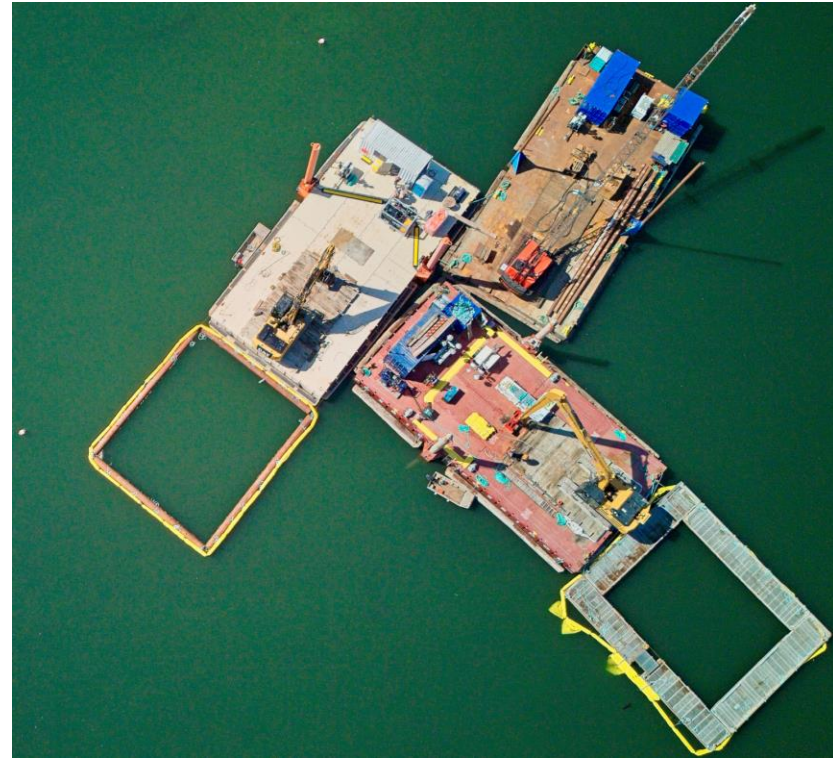
Phone: 1-250-616-9888

Project website: www.bchydro.com/victoriatoesquimalt



Project status

- Esquimalt Substation and proximity to E&N Trail and Hereward Green Park:
Ongoing work on substation footprint expansion and placement of new cable duct bank around the perimeter of the site. New fence to be installed the first two weeks of June.
- Hereward / Pine / Dominion / Devonshire intersection: Work commenced March 23 and the closure to Hereward, Pine and Dominion ended on April 21. Devonshire Road reopened May 14 with some traffic management ongoing thru May 29.
- Banfield Park: Crews have completed the concrete and duct bank work from the concrete vault to an area close to the foreshore. Ready for marine work. Banfield Park Trail detour begins June 15.
- Viaduct Park: Crews have completed the concrete and duct bank work from the concrete vault to an area close to the edge of the Galloping Goose Regional Trail. Ready for marine work. Galloping Goose Regional Trail detour begins June 1.
- Gorge Waterway marine work: Shallow burial work to connect the duct bank from Viaduct Park to Banfield Park commenced on May 27 and may last into October.
- Cable pulling – Dunedin Street to Topaz Avenue, Dunedin Street to Viaduct Park, and Esquimalt Substation to Banfield Park: All three cable pulling sections complete, with the section to Banfield Park to be complete by May 29.



May 20: Barges and equipment setting up to begin the marine work on May 27.



Construction photos: Esquimalt Substation

May 6: Work on the duct bank installation at far right of photo. The duct bank will turn along the edge of the site by the E&N Trail to the substation connection point on the left side of the photo.



Construction photos: Esquimalt Substation

May 20: Advancements of duct bank installation and cable connection work into the substation. A metal safety fence will be placed along the site perimeter at Hereward Green Park and E&N Trail from June 1 to 15. Single-lane trail traffic control will be in place.



Duct bank work.

Substation cable connection work.

Construction photos: Devonshire Intersection

May 6: An old water line, located above the existing cable, required replacement by the City of Victoria. Duct bank work proceeded after resolution. Intersection repaving of the work area is happening May 29.



Construction photos: Devonshire Intersection

May 12: Installation work to connect duct bank to the underground concrete vault, located below the excavator.



Banfield Park Trail detour

May 6: Completed concrete work and duct bank work by the underground vault. The yellow area shows the work zone during marine work that will include an open trench. A Banfield Park Trail detour is required for public safety and is to begin on October 15.



TEMPORARY BANFIELD PARK TRAIL DETOUR

June 15 to October 15, 2026
24 hours per day

BANFIELD PARK – BC HYDRO CABLE INSTALLATION – MARINE WORKS



Crews will be installing duct bank near the foreshore and along the bottom of the Gorge Waterway from Banfield Park to Viaduct Park for the Victoria to Esquimalt Cable Replacement Project, an emergency project to replace an existing cable that is at high risk of failure. Learn more at www.bchydro.com/victoriatoesquimalt or 'QR Code'.



Please follow the detour route via Raynor Avenue.

FOR PUBLIC AND WORKER SAFETY DO NOT ENTER THE CONSTRUCTION ZONE AT BANFIELD PARK

Contact: Stephen Watson at steve.watson@bchydro.com or 1250 616 9888

Construction photos: Viaduct Park

May 6: Concrete and duct bank work beside the concrete vault and the Galloping Goose Regional Trail.



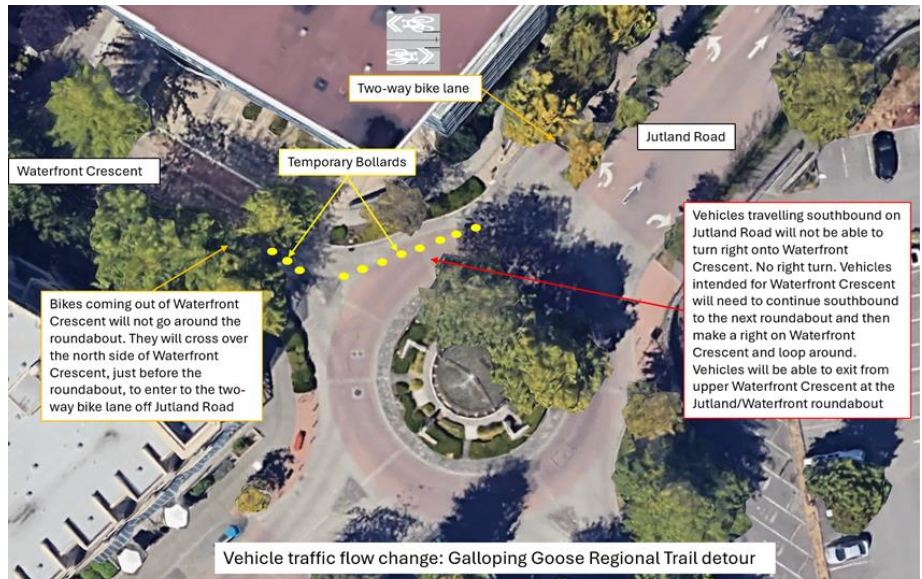
Construction photos: Viaduct Park

May 12: Near completion of the work beside the concrete vault area. Crews completed the work on May 15.



Viaduct Park – Galloping Goose Trail detour

BC Hydro, City of Victoria and Capital Regional District are closing coordinating on three separate capital project upgrades. Please follow signage and the CRD website. The detour beyond Gorge Road will change in mid-July. Several bike direction and awareness improvements have been made from Waterfront Crescent to the Jutland Road roundabout. An example is bike symbols painted on the road and a sidewalk let down improvement shown at bottom right. The bike safety changes will also result in a vehicle flow change that's outlined below. Thank you for your patience.



NOTICE:
GALLOPING GOOSE REGIONAL TRAIL CLOSURE
June 1, 2026 – March 2027
seven days a week, 24 hours a day

DETOUR ROUTES IN PLACE
FOLLOW POSTED SIGNAGE
DO NOT ENTER CONSTRUCTION ZONE

For more information:
construction@crd.bc.ca
236 475 1310

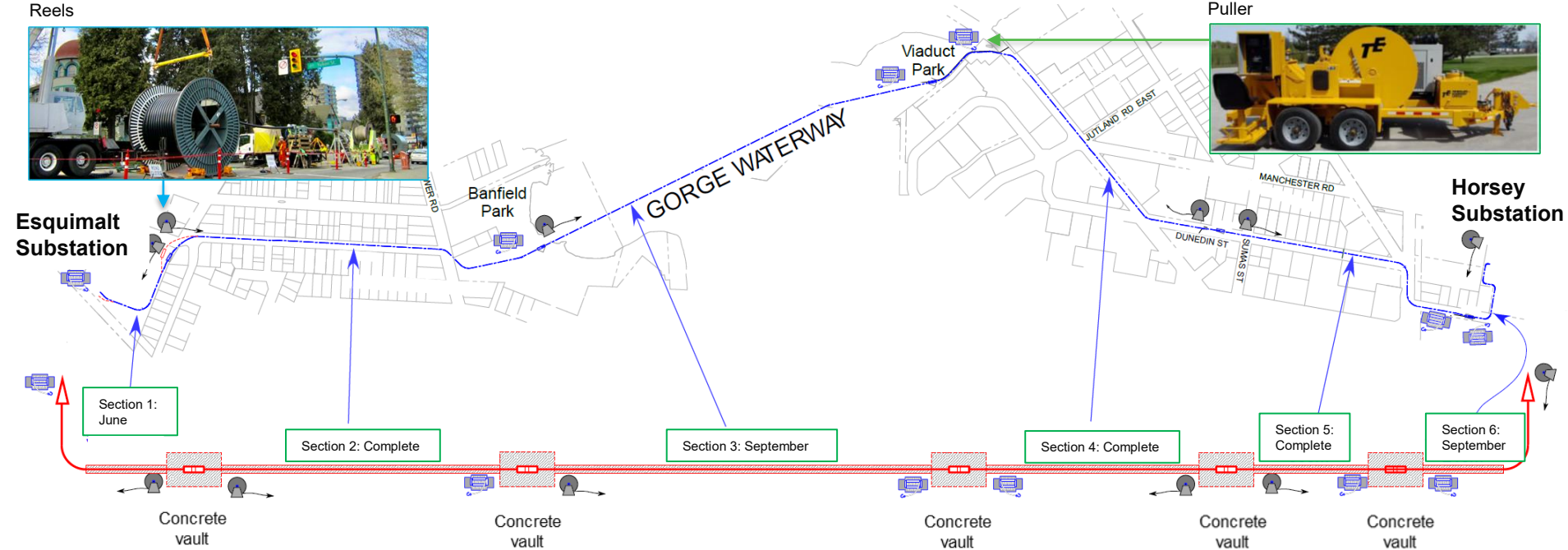
DETOUR MAP:
GALLOPING GOOSE REGIONAL TRAIL

Please follow the marked detour to return to the Galloping Goose Regional Trail or plan alternate routes into downtown (e.g., protected route on Gorge Rd. and Government St.)



Cable pulling through underground conduits: schedule

There are six cable pulling sections and they are shown below.



In May, trucks and equipment were placed beside the concrete vaults on Topaz Avenue, Dunedin Street, in Viaduct Park and Banfield Park, and off Devonshire Road. Each section may about a week move in equipment and pull (photo top right) or reel in (photo top left) the cable.

Cable pulling photos: Dunedin Street

May 5: The reels were delivered in the early morning as per truck hauling permitting requirements. The truck delivery dimensions, with one reel on it, are 4.45 meters wide, 22 meters long and 5.08 meters high. A reel may weigh 25-40 tons. A crane is then brought in to lift the reels into place.



Cable pulling photos: Dunedin Street

May 6: Cable that was on the reel on the right has been pulled into one of the three conduits. The reel on the left is just starting to be pulled into a second conduit. Three reels for the three conduits. This is a Section 5 cable pull to the Topaz Avenue vault.



Cable pulling photos: Dunedin Street

May 6: Starting to pull in the cable into the second conduit.



Cable pulling photos: Dunedin Street

May 6: Bird's-eye view of the cable work.



Cable pulling photos: Dunedin Street

May 20: Reels are now pulling cable within Section 4 to the Viaduct Park vault. This is the first of the three cables to be pulled.



Cable pulling photos: Viaduct Park

May 20: The yellow cable pulling machine is slowly pulling the cable through the conduit from the Dunedin Street vault to Viaduct Park. Crews here are closely communicating with crews on Dunedin Street. The cable puller has a much smaller footprint than the cable reels.



Construction photos: Gorge Waterway

May 14: Various construction barges assembled at the Ralmax dock prior to the May 15 early morning move under the Selkirk Trestle during a low monthly tide. The next opportunity would have been June 4.



Construction photos: Gorge Waterway

May 20: Barges and equipment on the west side of the Selkirk Trestle.



Gorge Waterway Marine Work – pre-work

Preparation for the marine work included water quality testing and invertebrate salvage along the marine trench work area.

Photo 1: water quality testing taken before marine construction, then weekly during construction, and after construction. The testing area is from the Banfield Park Dock to the Selkirk Trestle, to the Cecilia Creek area. There will be daily environmental monitoring on the site.

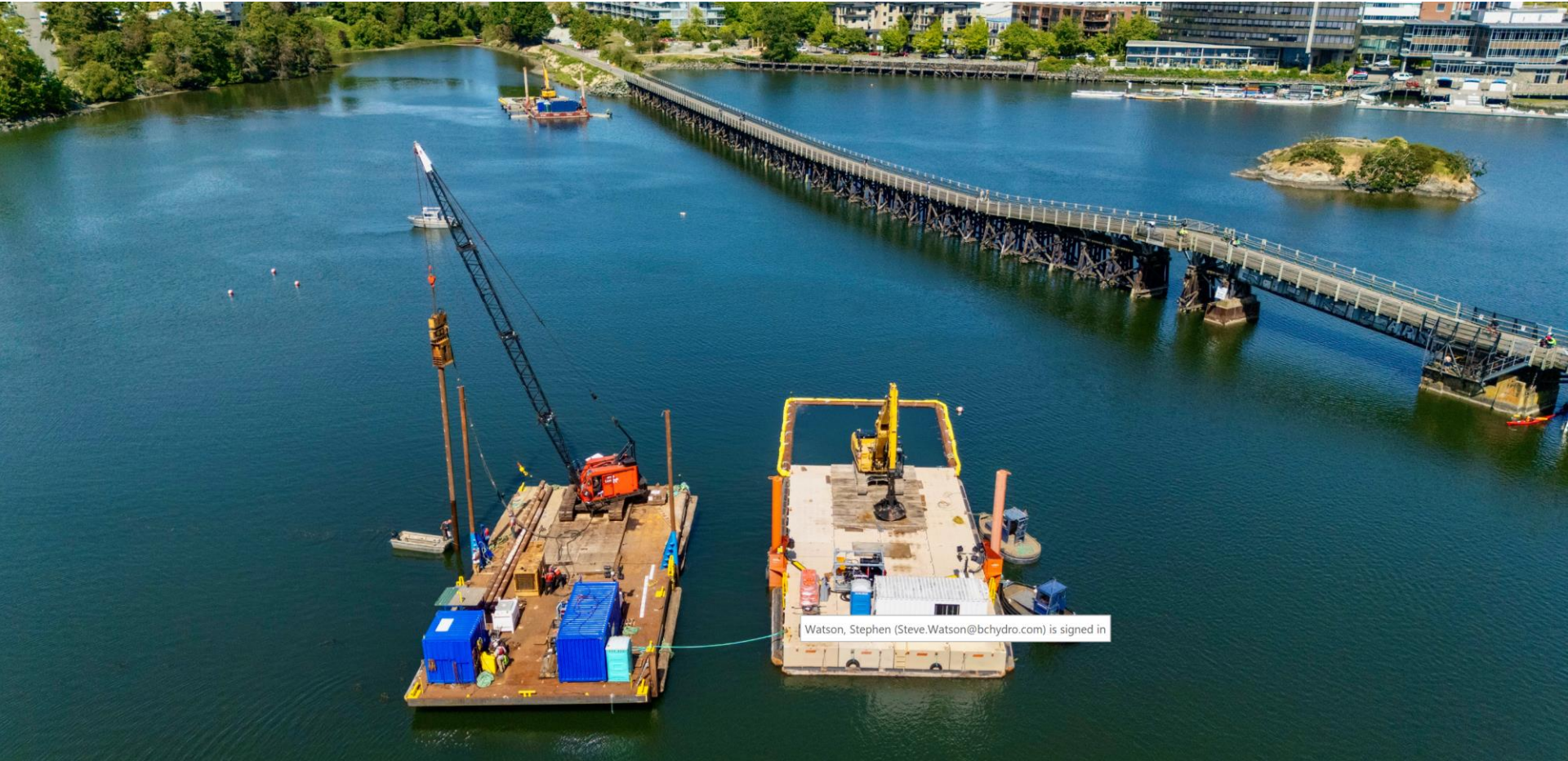
Photo 2: an eelgrass survey was completed to confirm an adjacent eel grass bed for environmental mitigation ahead of construction.

Photo 3: a crab from the invertebrate salvage that began with subtidal on May 12, and intertidal May 13-15.



Construction photos: Gorge Waterway

May 27: The first day of marine work as a barge moves towards Viaduct Park and prepares for the trench excavation for the conduit.



Watson, Stephen (Steve.Watson@bhydro.com) is signed in

Construction photos: Gorge Waterway

May 27: Positioning the barge in place near Viaduct Park.



Construction photos: Gorge Waterway

May 27: Continued positioning of the barge. Inset photo shows the first bucket of sediment from the trench placed in a sediment transport barge.



Gorge Waterway marine work: Schedule

Tides may impact marine trench stability resulting in multiple sediment removals and rework.



Banfield Park Dock

Banfield Park

Arbutus Pk

Marine: June to August

Intertidal: June to August

Banfield Park work:
June 15 to October 15
and includes foreshore
restoration.

Viaduct Park work:
June 1 to October 15
and includes
foreshore restoration.

Workdays: Monday to Saturday.

Marine closure likely to take place in August.
Dates to be provided in July.

Project awareness signage.

**GORGE WATERWAY
MARINE WORKS**

Victoria to Esquimalt Cable
Replacement Project

Contact:
Stephen Watson
steve.watson@bchydro.com
1 250 616 9888



Gorge Waterway Marine Work – marine traffic management plan

BC Hydro is issuing weekly email updates to water recreation users to advise of the marine activities and schedule, including marine traffic management. If you would like to be added please contact steve.watson@bchydro.com.

Generally, southbound watercraft can bypass the work zone by moving closer to the Banfield Park side of the Gorge Waterway and then through the main Selkirk Trestle opening. Pilot boats are in place and buoys. Boats are to stay 5 metres and swimmers 50 metres away from the barges as per signage near the Banfield Park Dock. The small raft by Banfield Park will be temporarily removed given its proximity to the work area.

The marine traffic map shows the project marine traffic moving sediment or rock material. There may be about two-three small barges moving under the Selkirk Trestle each hour. Work commenced May 27 with afternoon shifts from about 1:00 pm to about 11:30 pm.



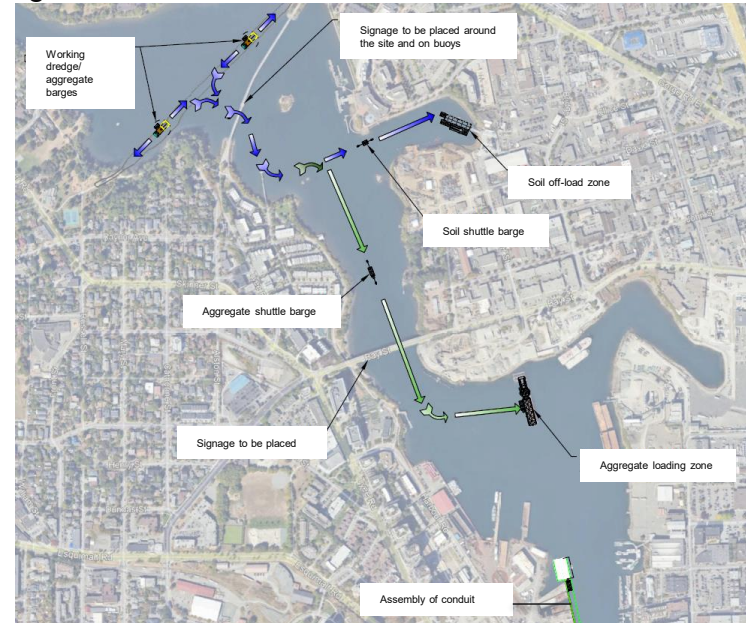


CAUTION

**VICTORIA TO ESQUIMALT
CABLE REPLACEMENT PROJECT**

Gorge Waterway – Marine works
May 25 to September 30, 2026

Please stay away from barges and work zones
Swimmers must stay 50 metres away –
obey marker buoys

Contact:
Stephen Watson
steve.watson@bchydro.com
1 250 616 9888



Project marine traffic route within the Gorge Waterway.