

# Victoria to Esquimalt Cable Replacement Project – Update Presentation

## Burnside-Gorge Community Association

Prepared by Stephen Watson

Email: [steve.watson@bchydro.com](mailto:steve.watson@bchydro.com)

Phone: 1-250-616-9888

Project website: [www.bchydro.com/victoriatoesquimalt](http://www.bchydro.com/victoriatoesquimalt)





# Topics:

Project background

Construction photos and considerations along the 2.7 km cable route

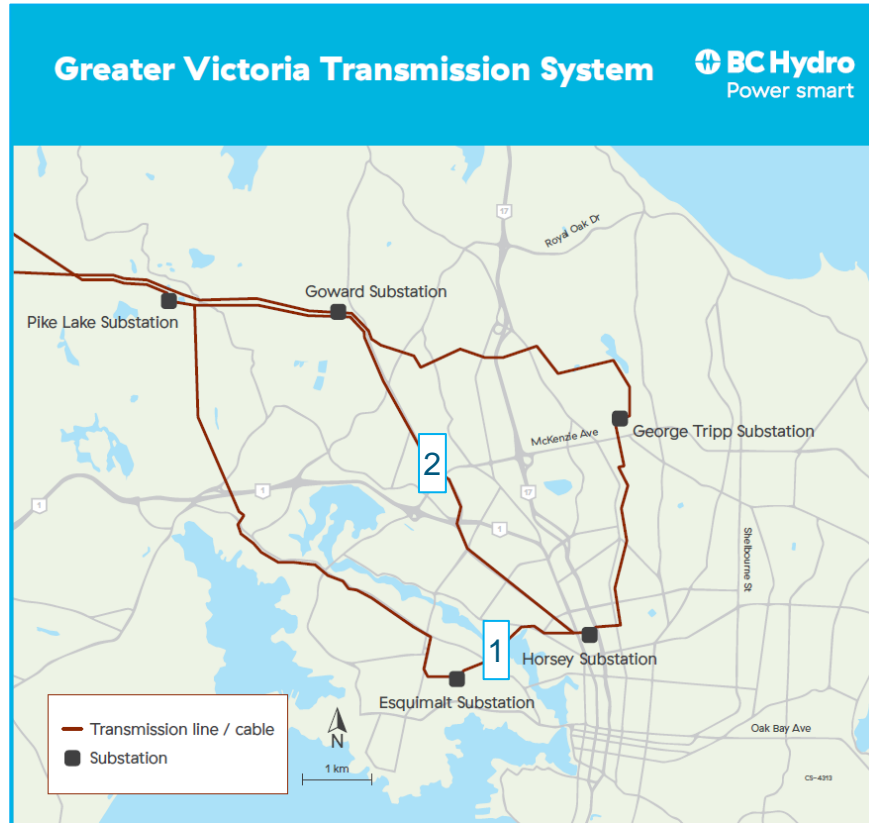
Viaduct Park

Coordination with the Victoria to Saanich Cable Replacement Project





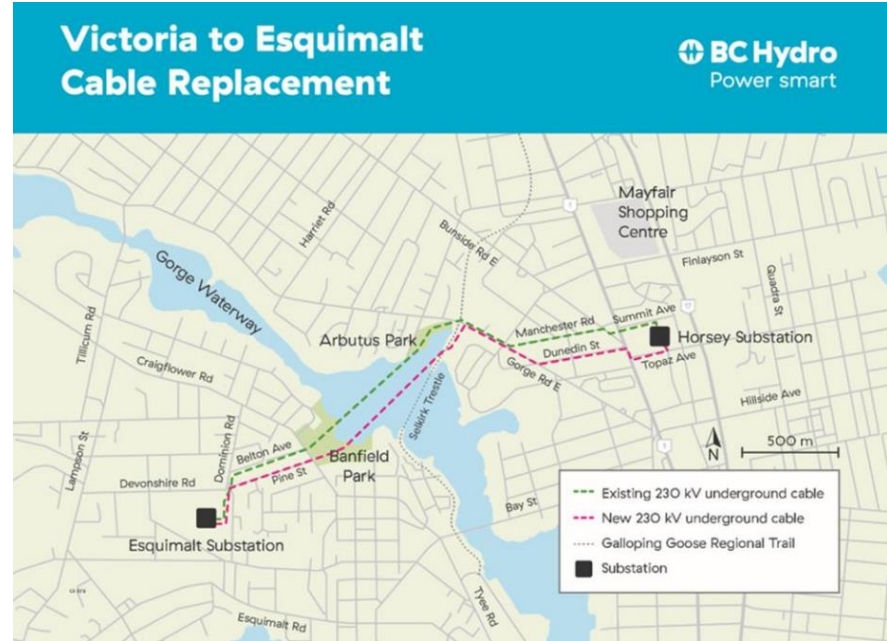
# Electricity Supply Overview





# Project Overview

- Committed to delivering safe and reliable electricity to our customers across the province.
- During an August 2023 cable repair beside the Gorge Waterway, we found widespread corrosion with the transmission cables that connect Victoria and Esquimalt.
- An emergency project to replace the 230 kilovolt, direct buried, mineral oil-filled transmission cables.
- Goal is to have the new cable in-service in early fall 2026.



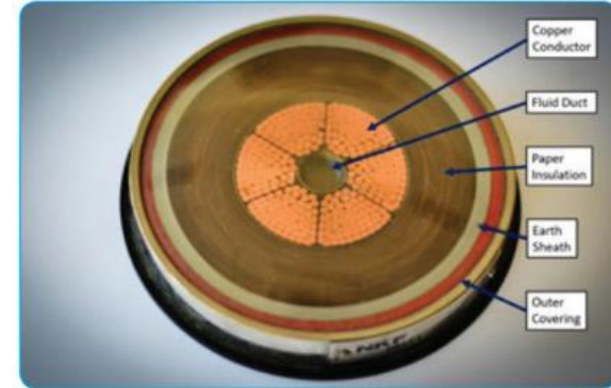
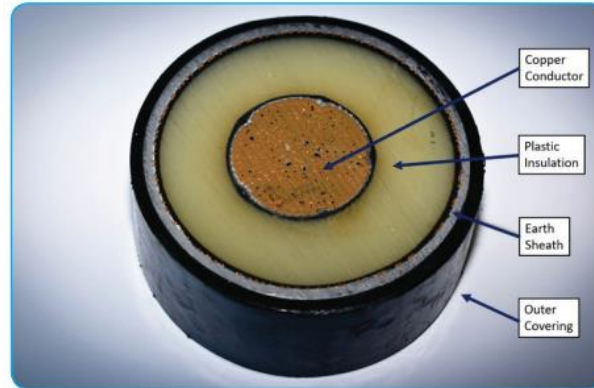


# Project Benefits

The project is an emergency project to maintain transmission system reliability. There are also other benefits:

- Capacity
- Seismic Resiliency
- Environment

Cross section of a polyethylene cable and an oil-filled cable (right).





# Planning the cable route – construction timing

Esquimalt Substation (left) and Horsey Substation work February 2025 to November 2026.

Esquimalt Substation work completed February to March 2025

Pine St and a section of Banfield Park completed June 2025

Banfield Park: work in February-March 2026

Gorge Waterway shallow burial and adjacent parks: Summer 2026 fisheries work window – July 1 to October 1

Gorge Road and Viaduct Park: work in November 2025 to November 2026

Dunedin Street: Crews will work westward beginning in mid-February 2026

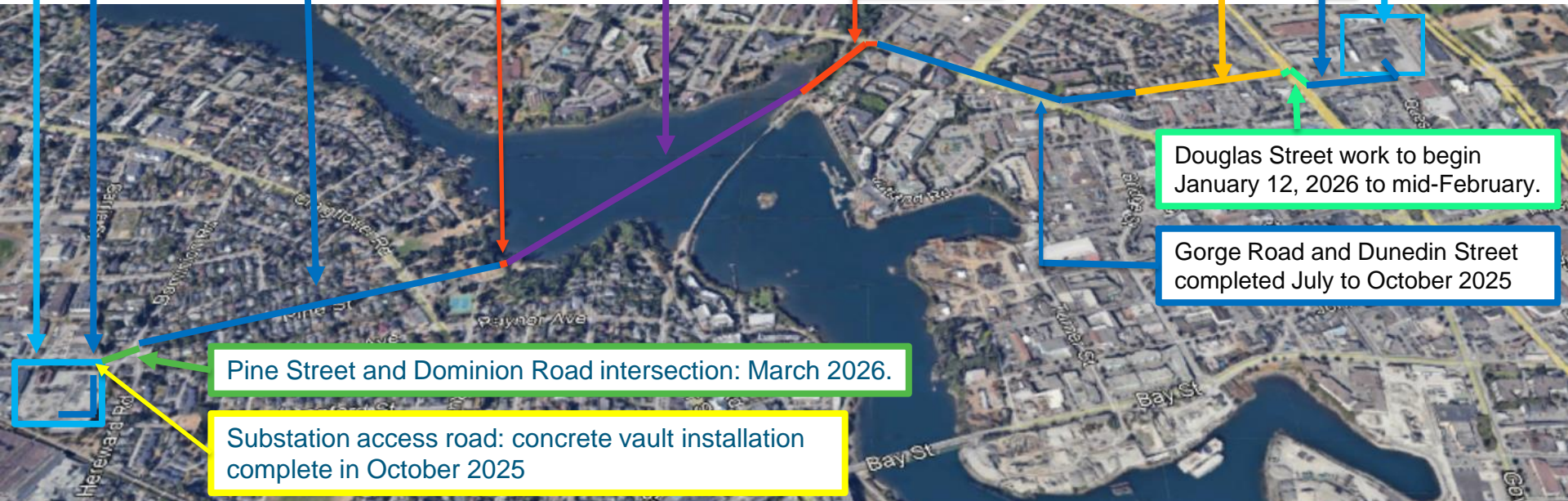
Topaz Avenue: completed December 2025

Douglas Street work to begin January 12, 2026 to mid-February.

Gorge Road and Dunedin Street completed July to October 2025

Pine Street and Dominion Road intersection: March 2026.

Substation access road: concrete vault installation complete in October 2025





**Project construction photos and  
considerations:  
moving eastward from the Esquimalt  
Substation to the Horsey Substation**





# Construction photos: duct bank construction

March 6: Photo of duct bank work within the Esquimalt Substation.





# Construction photos: Esquimalt Substation

October 2: Placing the lower section of the concrete vault beside the access road into the substation. The upper section of the vault is on a truck to the right side of the photo on Devonshire Road.





# Construction photos: Esquimalt Substation

January 13: E&N Trail beside the substation lands and the adjacent City of Victoria park off Hereward Road. Work will begin in February to expand the substation footprint and place a fence beside the trail – **orange** lines.





# Construction photos: Pine Street construction

May 21: Duct bank work with the rebar placement prior to pouring concrete.





# Construction photos: Craigflower Rd

May 27: Craigflower Road crossing work.

Pine Street is on the left side and Banfield Park and the Vic West Community Centre is on the right.





# Construction photos: Banfield Park

June 11: The duct bank comes down from Craigflower Road with some concrete placement work by the playground.





# Construction photos: Banfield Park

November 17: View over the work area within Banfield Park and the Gorge Waterway in the background.





# Construction photos: Banfield Park

November 17: Crews moving the concrete vault section into place. A wider view of the work zone and the trail detours around it to the right, bottom, and left of the photo.





# Construction photos: Banfield Park

December 5: A look inside the 20-metre-long concrete vault. These vaults are where the duct bank will enter and provide crews with access to pull in and splice the power cables together.





# Construction photos: Banfield Park

January 13: View of the work area within the park.





# Construction Schedule: Banfield Park

January 13: Drone view of the work site. The general work plan for 2026/2027 for the park includes:

- January: Power conduit from Raynor Street to the concrete vault.
- January: Tree and brush removal within the riparian area prior to bird nesting season.
- February: Anchor and duct bank work from the concrete vault to the 1-2 metres away from the gravel path by the foreshore.
- June: Cable pulling through the vault and conduits to the Esquimalt Substation.
- June-September: Gorge Waterway marine work to place conduit about 1.5 metres under the seabed.
- October: Cable pulling through the vaults and conduits to Viaduct Park.
- October-November: Banfield Park remediation and restoration of the work area to install the new duct bank and concrete vault.
- December thru 2027: Staged construction of saltmarsh within the foreshore area for fish habitat off-setting.

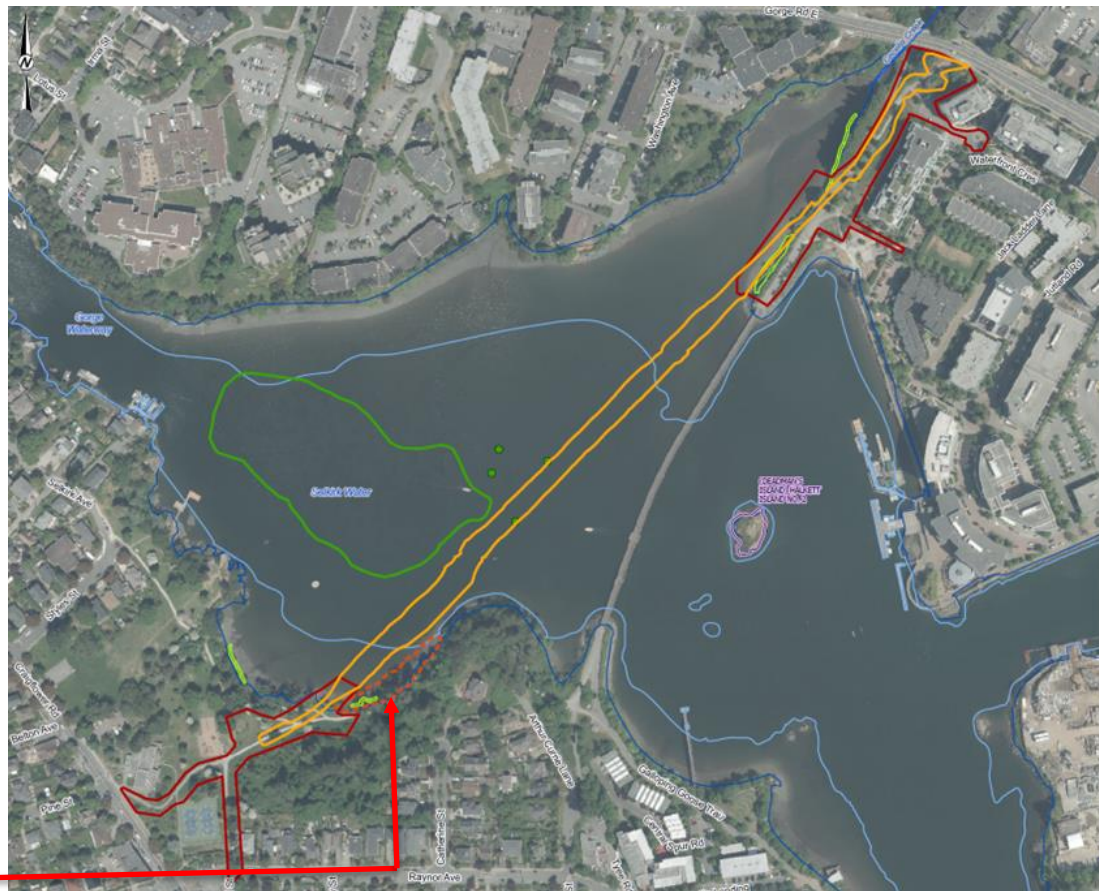




# Fisheries Act Authorization – Gorge Waterway

In early November 2025, the project received approval from Fisheries and Oceans Canada for the Fisheries Act Authorization to place duct bank within the Gorge Waterway and foreshore areas. The work will take place during the summer 2026 fisheries work window. This includes about a 1.5 metre deep and ~4-metre-wide sloped trench excavated within the marine bottom to then place the conduit for the cables. About 20,000 cubic metres of removed material will be replaced with clean material.

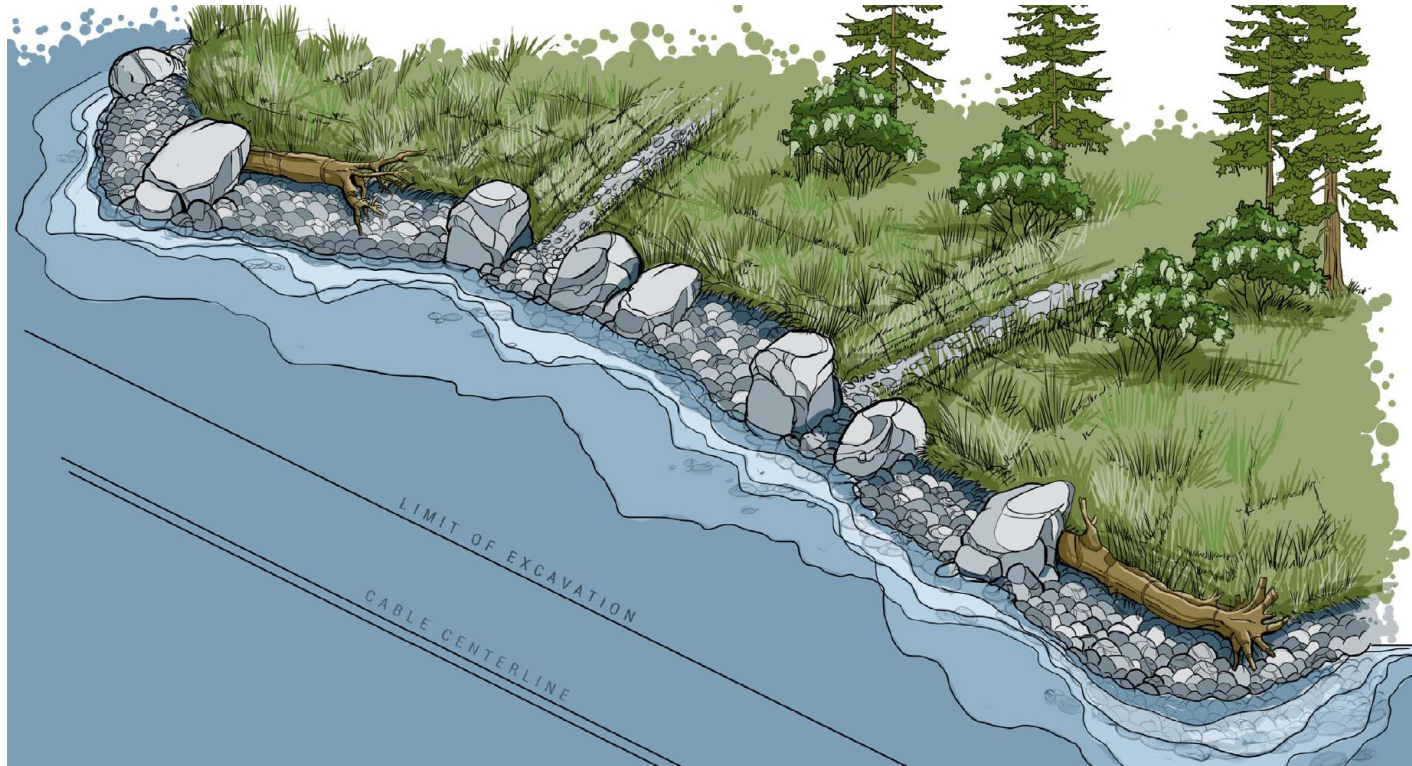
More information on the planning and constructability of the work within the Gorge Waterway will be provided in future community construction reports.





# Saltmarsh offset

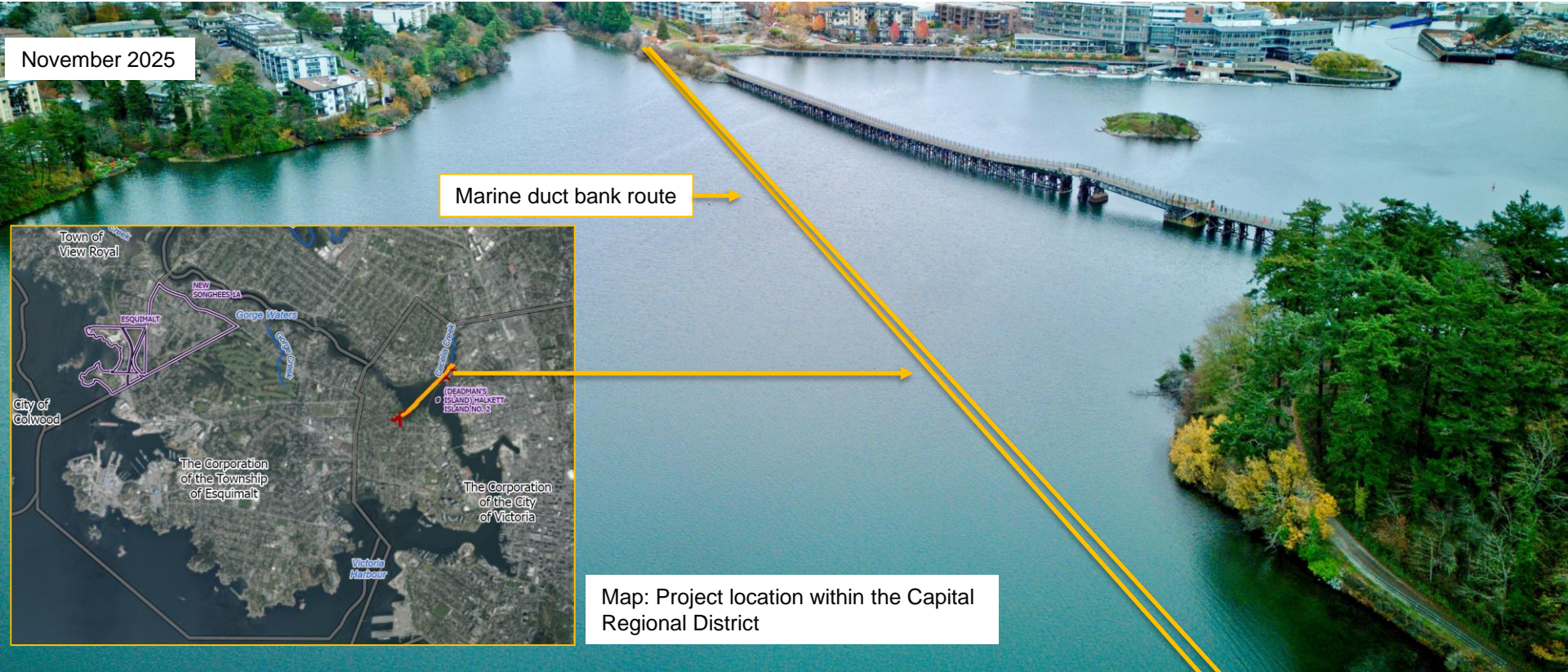
We are engaging with First Nations, City of Victoria, and the Gorge Waterway Initiative on the habitat offsetting. The saltmarsh area may be about 1,350 m<sup>2</sup> depending on the actual habitat impacts from the cable placement within the Gorge Waterway. The saltmarsh may be built in December 2026 and be planted in 2027. Below is an artist's rendition of the saltmarsh at Banfield Park and the goal is to make it natural looking and structurally sound. The saltmarsh will be monitored for five years to ensure it is successful.





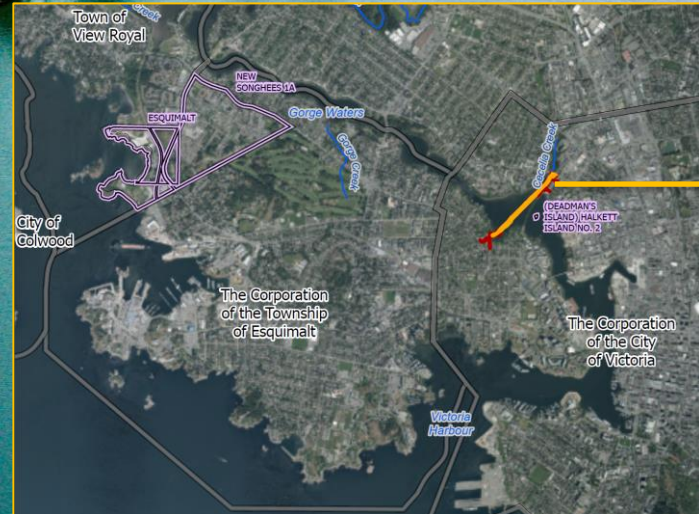
# Gorge Waterway – Navigable Waters

The marine construction work this summer will include the excavation of a trench across the Gorge Waterway from foreshore to foreshore. There will be barges, excavators, service barges, silt curtains and other supporting works and equipment as we move across the marine area. The work will follow a Construction Environmental Management Plan. While we do the work within the Gorge Waterway we will restrict access to work areas for public safety, though there will be navigation around the work zone.



November 2025

Marine duct bank route

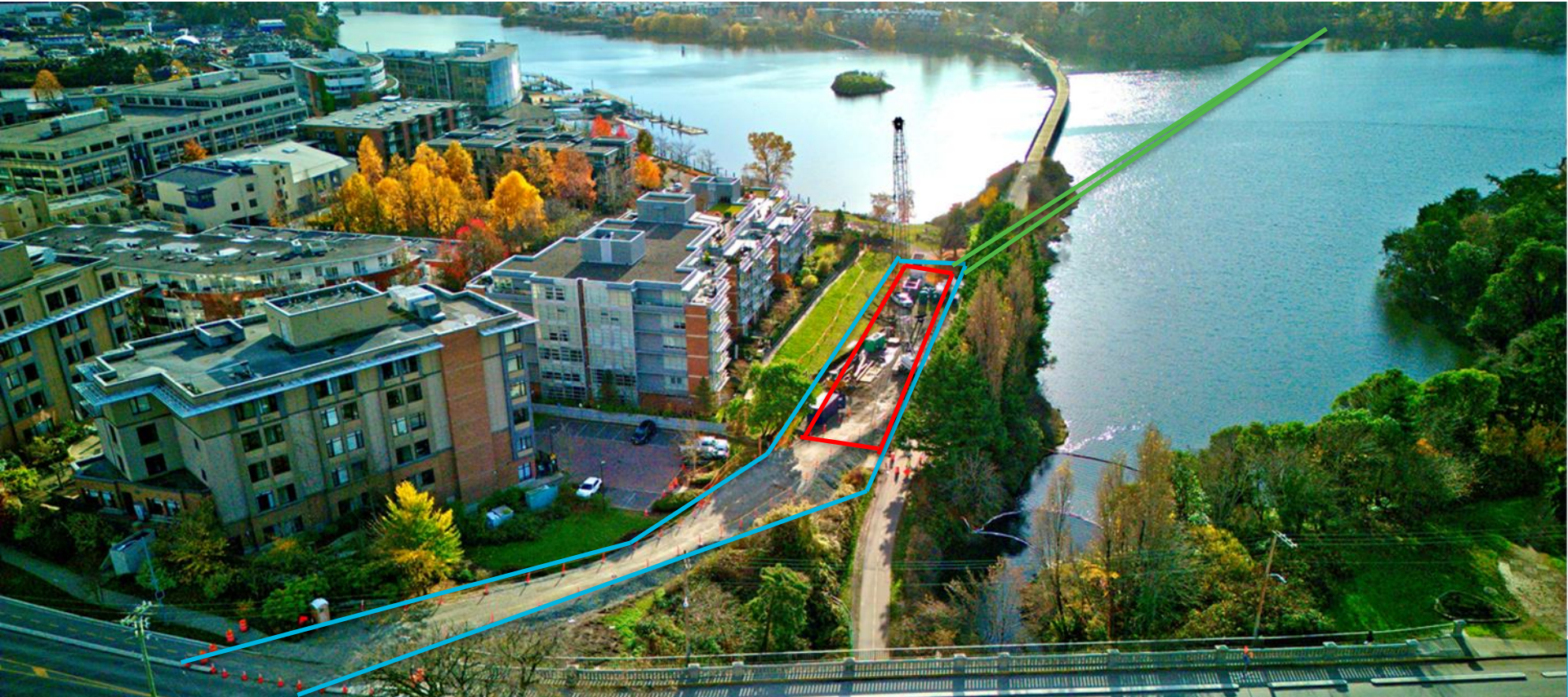


Map: Project location within the Capital Regional District



# Schedule: Viaduct Park

Blue highlighted area – construction to November 2026. Green highlighted area – construction June to September 2026 (period of time with some construction access through the park up to Gorge Road). Red highlighted area – cable reels and pulling cable in summer to early fall 2026. Final park restoration work and landscaping fall 2026.





# Construction photos: Jutland Road Intersection

August 19: Duct bank work moving through the intersection and beginning to move eastward down Gorge Road.





# Construction photos: Jutland Road Intersection

July 30 photo on left and September 16 photo on right shows the before and after of the intersection, looking west up Gorge Road. In coordination with the City of Victoria, it was agreed BC Hydro would do final paving and line painting of the entire Jutland intersection along with installation of concrete bike lane curbs along the westbound Gorge Road lane.





# Construction photos: Dunedin Street

September 16: Crews making final checks to ensure a safe and secure lift of the lower section of the concrete vault. The first concrete vault for the project was successfully placed on Dunedin Street.





# Construction photos: Douglas Street

January 13: Duct bank work entering Douglas Street from Topaz Avenue.





# Construction photos: Topaz Avenue

October 28: Crews getting ready to install the third and final concrete vault along city streets (a vault will be placed in Banfield Park and in Viaduct Park). The two sections of the concrete vault are shown in the upper part of Topaz Avenue.





# Construction photos: Topaz Avenue

November 6: Placing concrete over the conduit connected to the concrete vault.





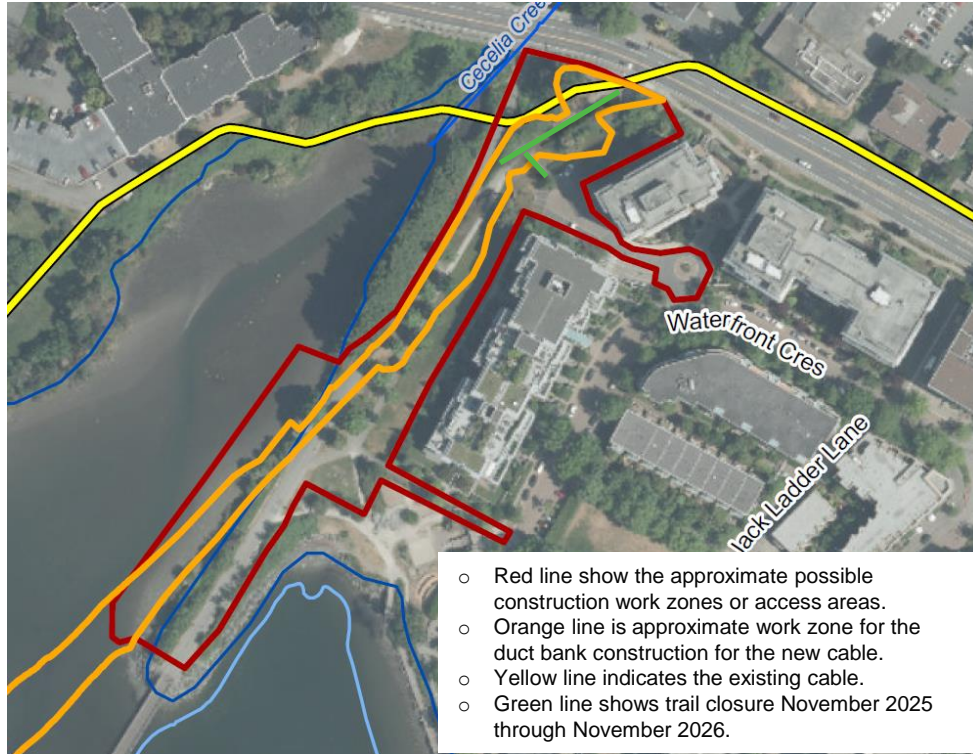
# **Viaduct Park – a focus of this meeting**





# Construction considerations: Viaduct Park

We have been coordinating with the City of Victoria, Capital Regional District, and Ministry of Transportation and Transit on the duct bank work within Viaduct Park.



Traffic management: There will be intermittent and short duration eastbound Gorge Road closures to move in equipment and materials. Please obey signage and flaggers.

The general phasing of the work: It will include shoring pile work, the concrete vault, soil removal, vault placement, and duct bank work. We will also build an improved pathway up to Gorge Road and provide eventual restoration and landscaping within Viaduct Park.

Galloping Goose Trail detours: There will be sporadic trail closures to safely complete the work and this is being coordinated with the Capital Regional District.





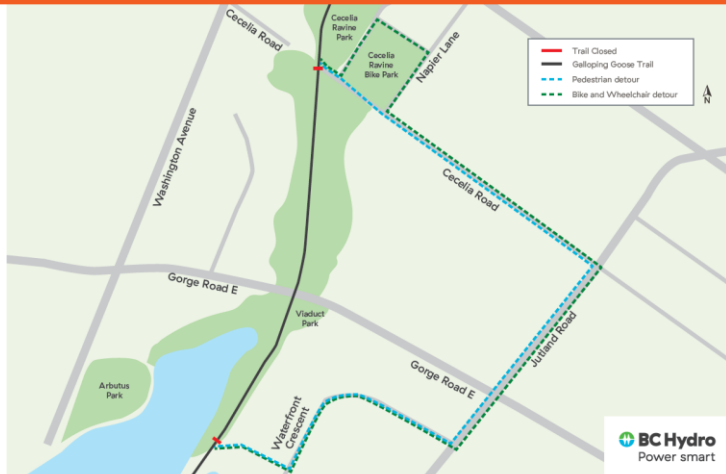
# Construction considerations: Galloping Goose Trail temporary closure and detour

Coordinated with the Capital Regional District and City of Victoria.

## TEMPORARY DETOUR: GALLOPING GOOSE TRAIL

November 17 to December 19, 2025, Monday to Friday from 7:00 am to 7:00 pm  
Open Saturdays and Sundays

VIADUCT PARK – BC HYDRO CABLE INSTALLATION SHORING WORK



**FOR PUBLIC AND WORKER SAFETY DO NOT ENTER THE CONSTRUCTION ZONE AT VIADUCT PARK**

Please follow the detour route to Waterfront Crescent, Jutland Road, Cecelia Road, and Napier Lane to return to the Galloping Goose Trail.

Contact: Stephen Watson at [steve.watson@bchydro.com](mailto:steve.watson@bchydro.com) or 1 250 616 9888

Learn more about the Victoria to Esquimalt Cable Replacement Project at [www.bchydro.com/victoriatoesquimalt](http://www.bchydro.com/victoriatoesquimalt)



November 17: First day of the trail detour during the week, and some Saturday's, to December 23.



# Construction photos: Viaduct Park

November 17: Panoramic view of Viaduct Park with the construction access road coming down from Gorge Road at the bottom left. Crews moved in the large crane on this day and began to setup the work area.





# Construction photos: Viaduct Park

November 17: A different vantage of the work area within Viaduct Park. At the bottom of the photo, the temporary detour for the Galloping Goose Trail that follows a sidewalk to the south side of the condominium building.





# Construction photos: Viaduct Park

November 17: Crews, equipment, and the crane within the park. The steel piles for the shoring work for the concrete vault and area on the water side of the vault is shown by the blue elongated rectangle.





# Construction photos: Viaduct Park

November 26: Sheet pile work.





# Construction photos: Viaduct Park

December 5: The sheet pile work from the new access road that comes down from Gorge Road. Our sheet pile contractor is Heavy Metal Marine.





# Construction photos: Viaduct Park

December 5: Work on the frame for the sheet pile placements. The inset photo shows some of the ongoing welding work to ensure each sheet is lined up and is guided into the ground to provide one cohesive wall to keep out groundwater during soil excavation.





# Construction photos: Viaduct Park

January 13: Birds-eye view (two photos joined together) of the work in Viaduct Park.

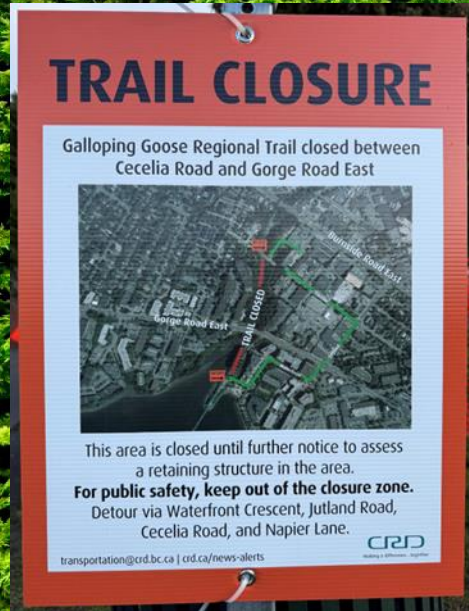




# Construction photos: Viaduct Park

January 13: Crews beginning working on the water drainage system along the perimeter for water management during excavation.

The completed steel sheet piles, set 7 to 10 metres deep, outline the excavation for the concrete vault



Capital Regional District trail signage since December 21, 2025.





# Construction photos: Viaduct Park

January 13: Crews will be removing brush and trees within the riparian area in early February prior to bird nesting season.





# Construction considerations: Pulling in cable at the cable vaults

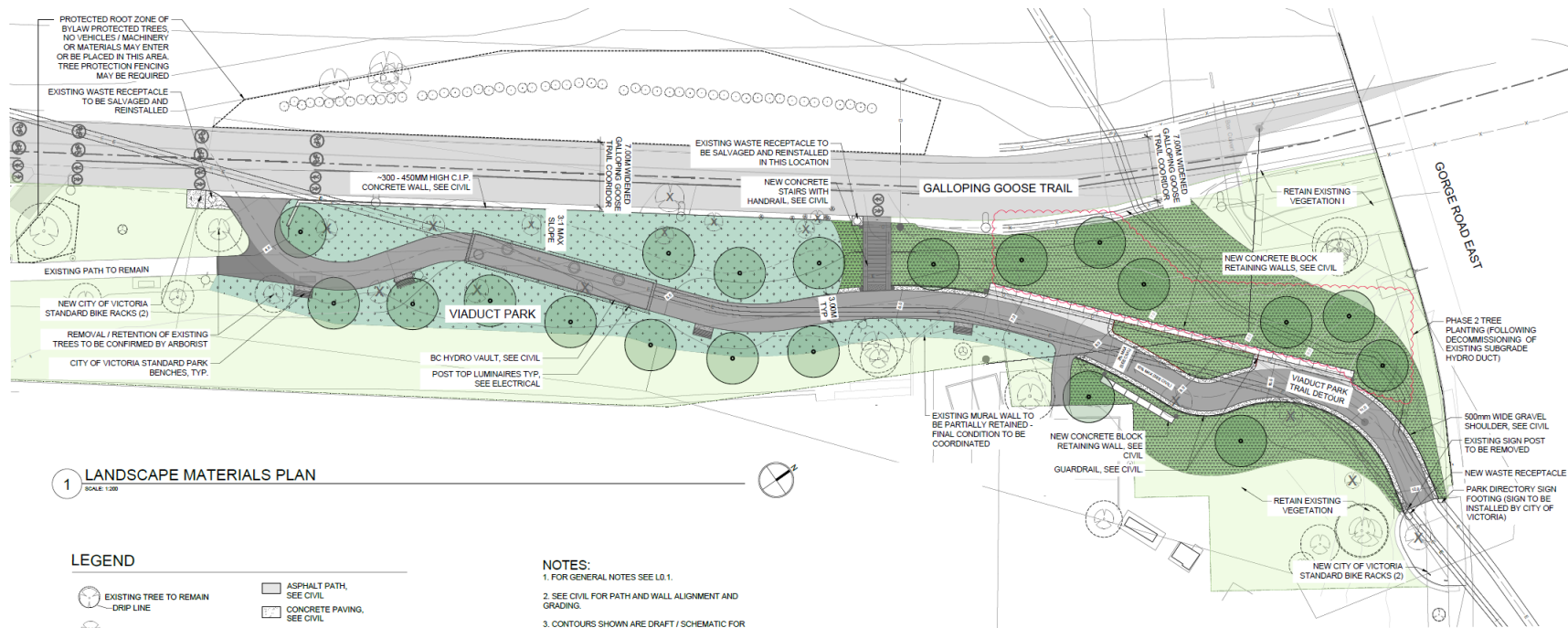
Crews will access the cable vaults that are every 500 metres or so along the route to pull through the power cable. The size of the cable supporting equipment and reels are large as shown in the photo below from a project in Vancouver. The cable pulling crew will mobilize to the five vault locations along the cable 2.7 km route starting around summer to early fall 2026.





# Viaduct Park: trail and landscape plan

The goal for the Capital Regional District and the City of Victoria was an 8.3% grade up the slope to Gorge Road for all ages and abilities. We coordinated and could achieve 10%. It is a significant improvement over the current 16-17% slope. By: McElhanney and Lanark (landscape architect).



## 1 LANDSCAPE MATERIALS PLAN

SCALE: 1:200

### LEGEND

- EXISTING TREE TO REMAIN DRIP LINE
- EXISTING TREE TO BE REMOVED
- PROPOSED TREE, SEE PLANTING PLAN L5.0
- ASPHALT PATH, SEE CIVIL
- CONCRETE PAVING, SEE CIVIL
- LAWN RESTORATION, SEE PLANTING PLANS L5.0 & L5.1
- PLANTING AREA, SEE PLANTING PLANS L5.0 & L5.1
- EXISTING PARK TO REMAIN
- CITY OF VICTORIA STANDARD PARK BENCH, SEE DETAIL 11.2.0
- CITY OF VICTORIA STANDARD WASTE RECEPTACLE, SEE DETAIL 31.2.0
- CITY OF VICTORIA STANDARD BIKE RACK, SEE DETAIL 21.2.0

### NOTES:

1. FOR GENERAL NOTES SEE L0.1.
2. SEE CIVIL FOR PATH AND WALL ALIGNMENT AND GRADING.
3. CONTOURS SHOWN ARE DRAFT / SCHEMATIC FOR COORDINATION PURPOSES ONLY.
4. FINAL TREE LOCATIONS AND QUANTITIES ARE UNDER REVIEW.
5. ARBORIST SUPERVISION REQUIRED FOR ALL WORK WITHIN THE ROOT ZONE OF EXISTING TREES.



# **Victoria to Saanich Cable Replacement Project**

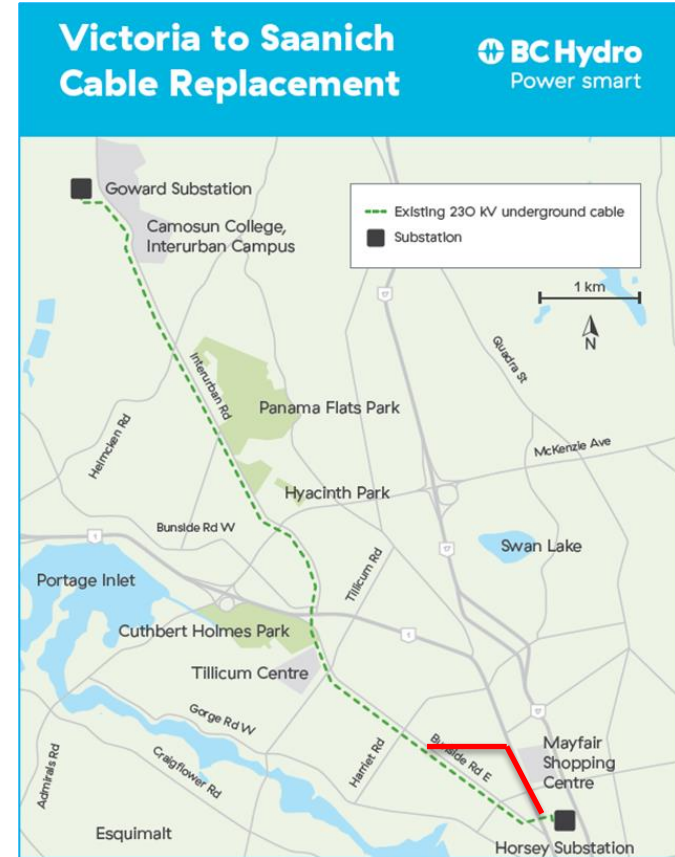




# Victoria to Saanich Cable Replacement Project – Update

## Status

- Preliminary 65% duct bank design on city streets.
- Spring 2027 the start of construction – TBD



Replacement cable follows similar routing though **red line** shows the new route down Alpha Street, Douglas Street and into Summit Avenue.





# Early construction works and coordination: Galloping Goose Trail

We will build about 40-50 metres of duct bank (shown by red lines) under the trail between Alpha terrace and Alpha Street during the Capital Regional District trail widening project between June and November 2026. This limits future Galloping Goose Trail closures and disruption of the trail surface with asphalt patching.

