

# Victoria to Esquimalt Cable Replacement Project – Community Construction Report #5

**September 2025**

Prepared by Stephen Watson

Email: [steve.watson@bchydro.com](mailto:steve.watson@bchydro.com)

Phone: 1-250-616-9888

Project website: [www.bchydro.com/victoriatoesquimalt](http://www.bchydro.com/victoriatoesquimalt)



# Project status

- Gorge Road duct bank installation from Jutland Road to Dunedin Street is complete. Concrete bike curbing along this section of road is scheduled for October 7 from 7:00 to 5:00 pm. Final road line painting within this same section is planned for October 8 at night. A road detour for westbound Gorge Road traffic will be required on those dates.
- Crews have been working along the 500-block of Dunedin Street, including the installation of the project's first concrete vault (one of five vaults along the route). Crews will stop just past the Sumas Street intersection on October 3. Pre-work along the 600-block of Dunedin Street found utility conflicts with our duct bank depth and requires a redesign that will now require a shallower excavation similar to Pine Street. The construction along the 600-block of Dunedin Street will shift to around February or March 2026.
- Crews moved to the Esquimalt Substation off Devonshire Road the week of September 22 to install a concrete vault beside our access road into the substation. The work may take about two weeks.
- Duct bank work along Topaz Avenue to the Horsey Substation, including the placement of a concrete vault under Topaz Avenue, is scheduled to begin October 3 and be complete with street restoration by the end of November.
- The crossing of Douglas Street, coming from Topaz Avenue, may take place in January 2026.
- Work on the concrete vault installations in Banfield Park and in Viaduct Park is planned to begin November 2025.
- The foreshore and marine work is planned to begin on December 1, 2025, and be complete by February 28, 2026. More information on this work will be provided in the October report.



A September 16 bird's-eye view of the concrete vault placement on Dunedin Street, with the lower section of the concrete vault in place and the top section ready to be lifted into place.



# Planning the cable route – construction timing

Esquimalt Substation (left) and Horsey Substation work February 2025 to July 2026.

Esquimalt Substation work completed February to March 2025

Pine St and a section of Banfield Park completed June 2025

Banfield Park: work in November 2025

Gorge Waterway shallow burial and adjacent parks: December 1, 2025, to February 15, 2026 (fisheries work window)

Gorge Road and Viaduct Park: work in November 2025 to March 2026

Dunedin Street: Crews will work eastward beginning February or March 2026.

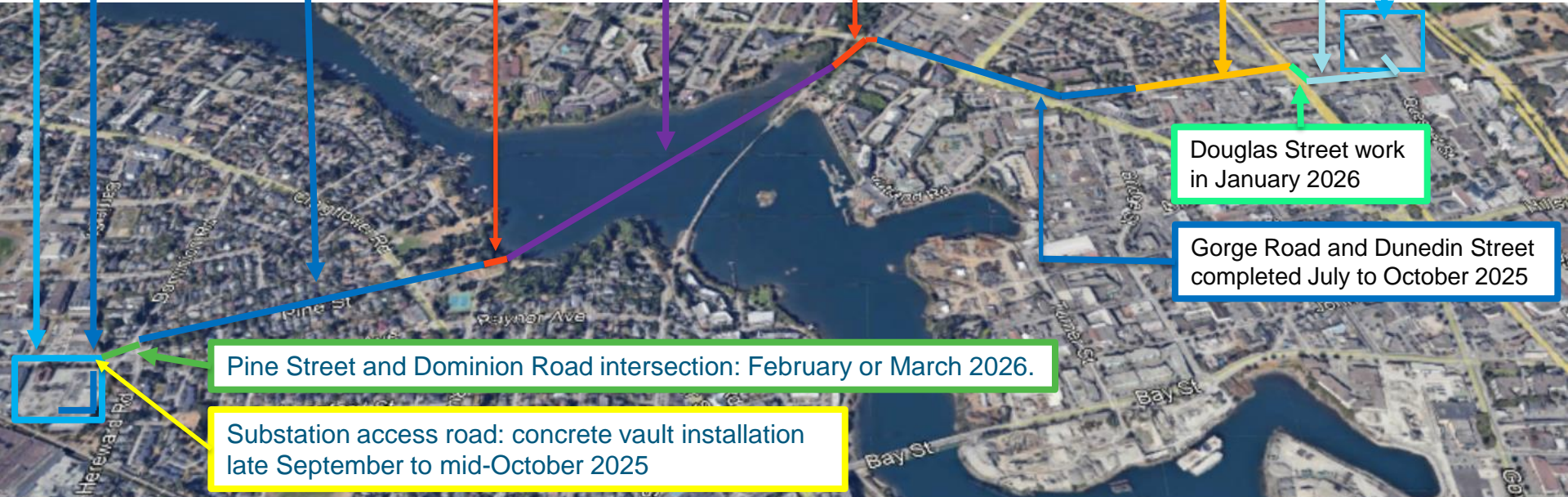
Topaz Avenue: Crews will work October through November 2025

Douglas Street work in January 2026

Gorge Road and Dunedin Street completed July to October 2025

Pine Street and Dominion Road intersection: February or March 2026.

Substation access road: concrete vault installation late September to mid-October 2025





# Construction photos: Gorge Road

September 3: Transmission cable duct bank work along Gorge Road, looking westbound.





# Construction photos: Gorge Road

September 3: Placing curving duct bank along the trench as we turn off Gorge Road and onto Dunedin Street.





# Construction photos: Gorge Road

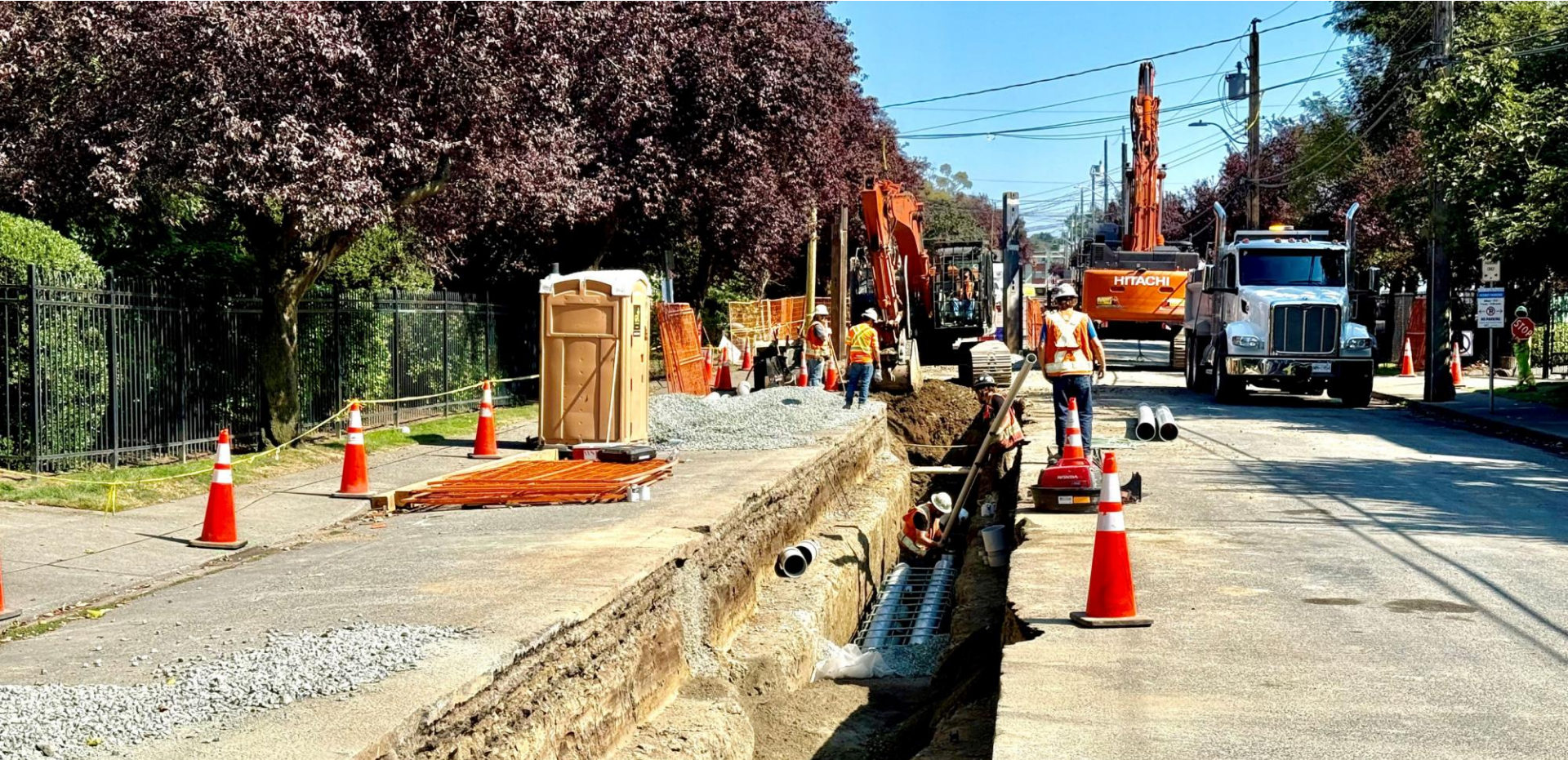
August 7: Duct bank trench excavation on Gorge Road with Dunedin Street in the background.





# Construction photos: Gorge Road

September 11: Crews moving down Dunedin Street and placing the duct bank conduit.





# Construction photos: Dunedin Street

September 11: Excavating material for the duct bank, and in the background, placing a section of sheet pile for the concrete vault excavation. The photo is looking eastward down Dunedin Street.





# Construction photos: Dunedin Street

September 11: A broader view, looking westward, of the sheet pile shoring in place and the removal of material. The excavation for the concrete vault is 13 metres long, 5 metres across, and 5 metres deep.





# Construction photos: Dunedin Street

September 16: The completed excavation for the concrete vault placement. The lower section of the concrete vault is on the left.





# Construction photos: Dunedin Street

September 16: Crews making final checks to ensure a safe and secure lift of the lower section of the concrete vault. The first concrete vault for the project was successfully placed on Dunedin Street.





# Construction photos: Dunedin Street

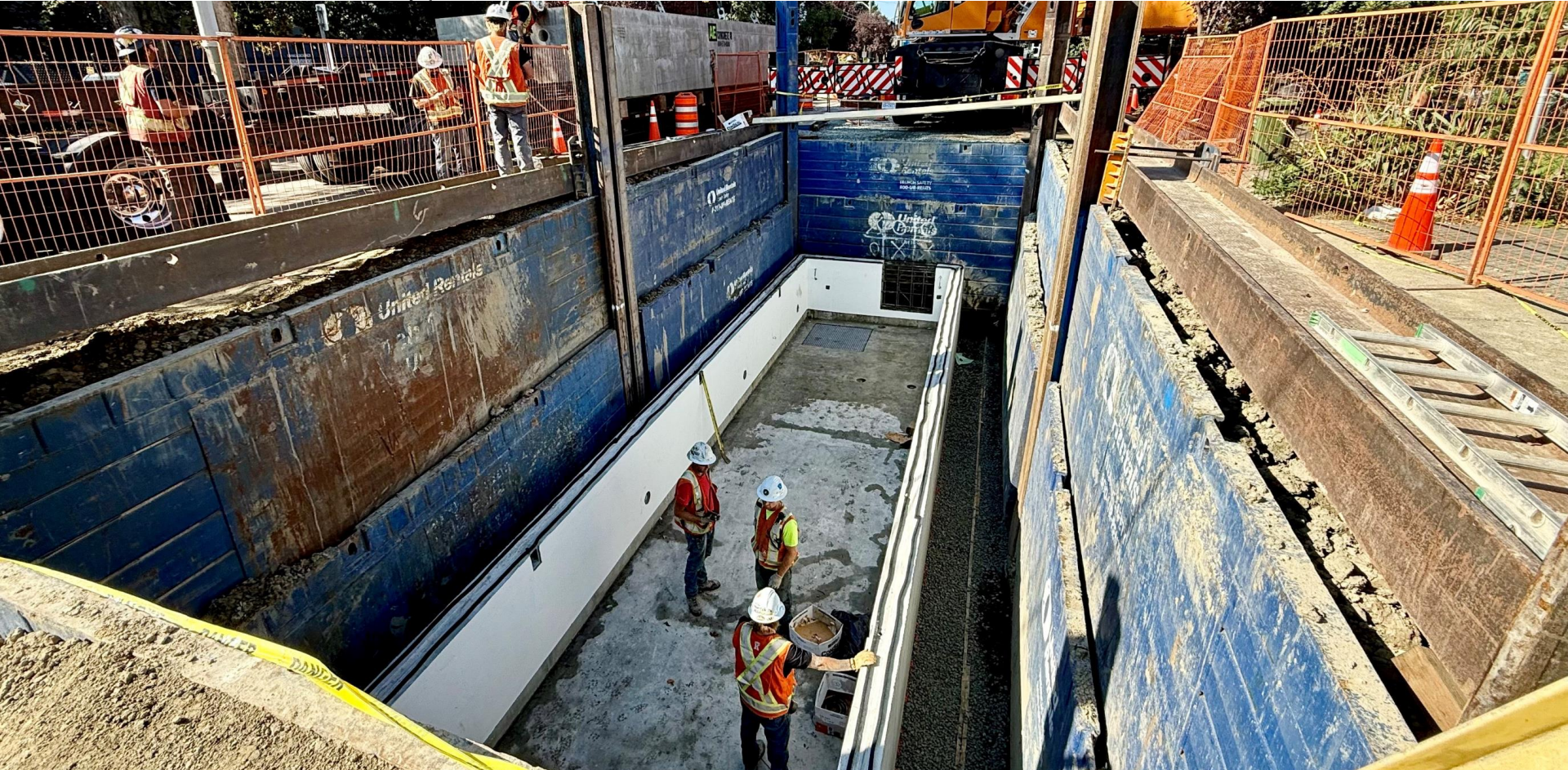
September 10: Crews moving the lower vault section into place. The vault is 4 metres wide, 4 metres deep, and 12 metres long.





# Construction photos: Dunedin Street

September 16: Crews successfully placed the first section of the vault.





# Construction photos: Dunedin Street

September 16: Looking down at Dunedin Street and the duct bank work and concrete vault installation.





# Construction photos: Dunedin Street

September 16: Looking down Dunedin Street and crews working eastward.





# Construction photos: Dunedin Street

September 16: Crews lifting the upper section of the concrete vault.





# Construction photos: Dunedin Street

September 16: Crews lining up the upper vault with the lower vault.





# Construction photos: Dunedin Street

September 16: Crews lining up the upper vault with the lower vault.





# Construction photos: Jutland Road Intersection

July 30 photo on left and September 16 photo on right shows the before and after of the intersection, looking west up Gorge Road. In coordination with the City of Victoria, it was agreed BC Hydro would do final paving and line painting of the entire Jutland intersection along with installation of concrete bike lane curbs along the westbound Gorge Road lane.





# Construction photos: Dunedin Street

September 23: Crews working by the placed concrete vault. The final asphalt paving of the 500 block of Dunedin Street is planned for October 3. All of Dunedin Street is planned to be re-opened by end of day October 3.





# Construction photos: Dunedin Street

September 23: Crews working on the duct bank and vault. Construction will stop just before the Sumas Street intersection given a design change required for the 600 block of Dunedin Street. Some additional pre-work discovered underground utility conflicts with our planned duct bank depth. This will require a shallower trench excavation. The depth of the duct bank excavation will be reduced from 2.5 metres to about 1.5 metres. Construction in the 600 block is tentatively planned for February or March 2026.





# Construction photos: Esquimalt Substation

September 23: Crews working on the shoring works for the concrete vault installation, the second vault to be installed for the project. The work is within the substation property's access road. There will be a road closure to Devonshire Road in front of the substation from 4:00 am to 5:00 pm on October 2 to safely enable the placement of the concrete vault.





# Construction photos: Esquimalt Substation

September 23: Crews placing the middle section of shoring braces for the excavation for the concrete vault.





# Traffic management plan – Gorge Road

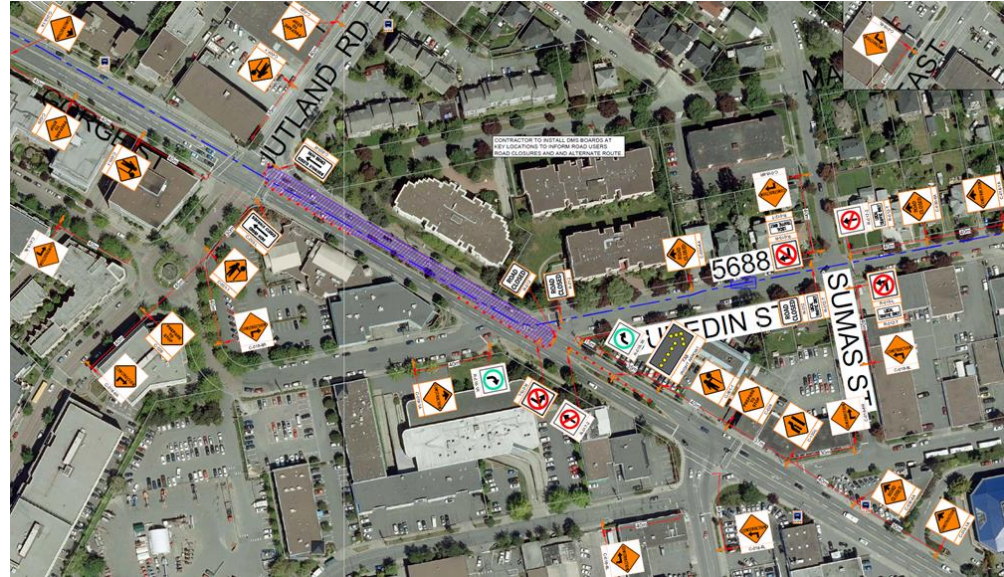
## Gorge Road (east of Jutland Road to Dunedin Street)

### Work timeline:

- Final restoration of the road section with the bike lane concrete curbing and road line painting.
  - One day for curbing work: October 7, 7:00 am to 5:00 pm.
  - Road painting at night: October 8.
- This work can only be done once crews are past the Dunedin and Sumas streets intersection so there is a Gorge Road westbound detour option in place.

### Traffic management:

- Gorge Road westbound lane will be closed during the day on October 7 and at night on October 8 when work in progress and traffic detoured via Dunedin Street.
  - Douglas Street and Burnside Road are recommended as alternate route.
- Eastbound lane remains open.
- Follow flaggers and detour signs.





# Traffic management plan – Topaz Avenue

## Work timeline:

- The third concrete vault placement along the duct bank route is planned to begin on October 16. The vault work on Topaz Avenue may take about two weeks.
- Duct bank construction from the Horsey Substation to the concrete vault is planned to take place around November 4 and may take up to two weeks to complete.
- Duct bank construction from the concrete vault to the edge of Douglas Street is planned to take place over the last two weeks of November.

## Traffic management:

- Topaz Avenue shown in blue highlighted area will be closed except for local traffic.
  - South lane used for construction access and single-lane alternating traffic.
- North lane is where the duct bank will be placed.
- No parking on either side of the street within the designated work zones.
- Follow flaggers and detour signs.

