

# Victoria to Esquimalt Cable Replacement Project – Community Construction Report #4

**August 2025**

Prepared by Stephen Watson

Email: [steve.watson@bchydro.com](mailto:steve.watson@bchydro.com)

Phone: 1-250-616-9888

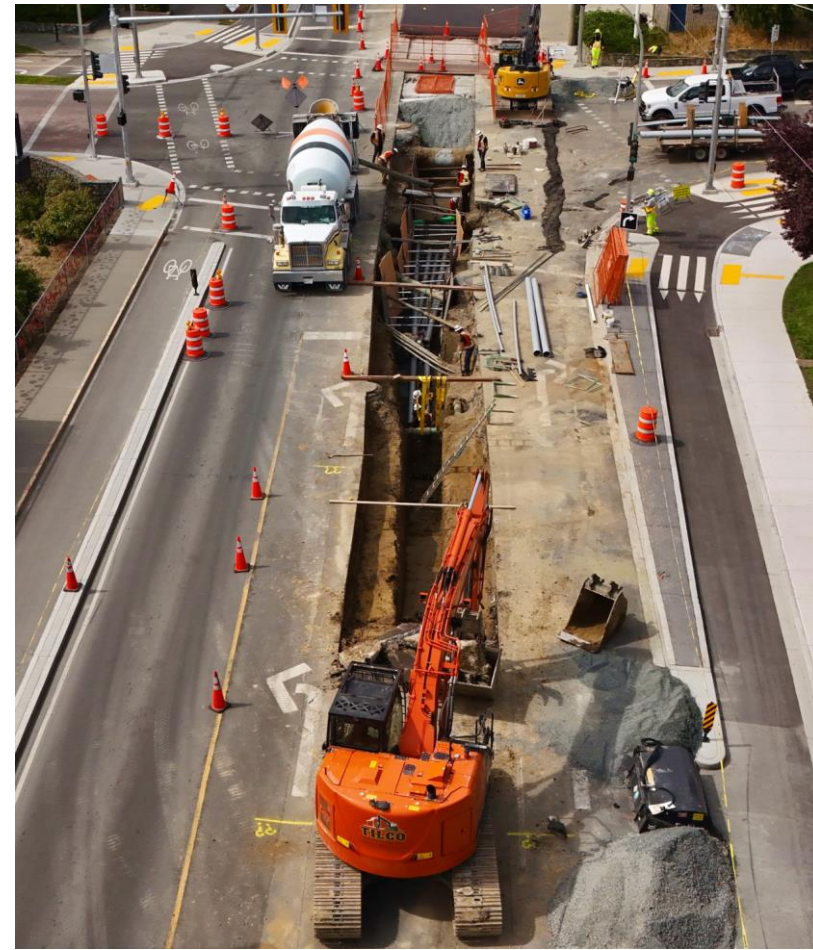
Project website: [www.bchydro.com/victoriatoesquimalt](http://www.bchydro.com/victoriatoesquimalt)



# Project status

- Crews have been working along Gorge Road since early July to install transmission cable duct bank along Gorge Road to Dunedin Street, where the work will continue eastward up Dunedin Street, across Douglas Street, and up Topaz Avenue to the Horsey Substation.
- Gorge Road duct bank installation and road restoration works west of the Jutland Road intersection, and through the intersection, will be complete the morning of August 30 and open to traffic.
- Gorge Road duct bank installation east of the intersection to Dunedin Street is underway with repaving planned for early September.
- Work along Dunedin Street, beginning in early September, may last six to eight weeks.
- We appreciate the community's patience and understanding for the traffic management changes and construction noise.

August 19 view of the duct bank excavation, looking westward along Gorge Road, at the Jutland Road and Gorge Road intersection.



# Planning the cable route – construction timing

Esquimalt Substation (left) and Horsey Substation work February 2025 to July 2026.

Esquimalt Substation work completed February to March 2025

Pine St and a section of Banfield Park completed June 2025

Banfield Park work in November 2025

Gorge Waterway shallow burial and adjacent parks: December 1, 2025 to February 15, 2026 (fisheries work window)

Viaduct Park work in November 2025 to March 2026

Streets include Gorge Rd, Dunedin St, Douglas St, and Topaz Ave: Crews will work eastward from Gorge Rd from early July to November 2025.

Pine St and Dominion Rd intersection: Spring 2026.





# Construction photos: Gorge Road

August 7: Transmission cable duct bank work along Gorge Road, with the Jutland Road intersection in the background.





# Construction photos: Gorge Road

August 7: A closer view of the duct bank work and the placement of a special thermal concrete to keep the cables cool when at or below a 2.5 metre depth.





# Construction photos: Gorge Road

August 7: Duct bank conduit installation with spacers and rebar. The four-conduit configuration switched from two vertical levels to one horizontal level. The trench depth here is 2.5 metres and will be over 3 metres at the intersection to fit under certain utilities.





# Construction photos: Gorge Road

August 7: Crews connecting a section of conduit together. The conduit ends are glued and then knocked in to have one cohesive pipe.





# Construction photos: Gorge Road

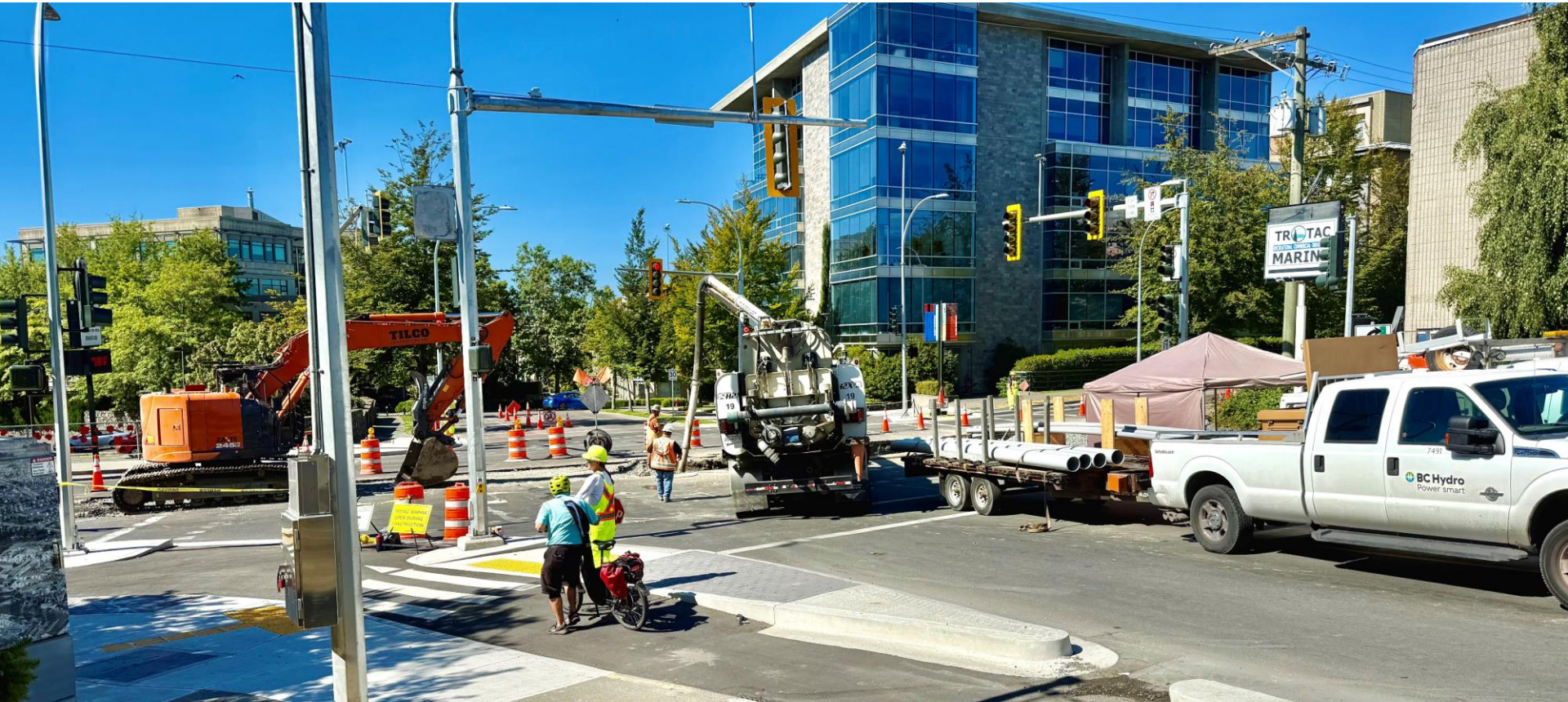
August 7: Removing material for the trench near the Jutland Road intersection.





# Construction photos: Jutland Road Intersection

August 12: Crews moved into the intersection on August 11. Traffic management and guiding pedestrians and cyclists was a priority.





# Construction photos: Jutland Road Intersection

August 12: Duct bank work with soil removal and the excavation work around various underground utilities.





# Construction photos: Jutland Road Intersection

August 12: Duct bank work within the intersection, looking north up Jutland Road.





# Construction photos: Jutland Road Intersection

August 12: Placing the concrete base along a section of duct bank excavation to prepare for final asphalt paving.





# Construction photos: Jutland Road Intersection

August 15: View westward down Gorge Road showing duct bank work at an intersection with many utilities to work around. Planned paving west of Gorge Road to the west of the intersection was postponed due to rain.





# Construction photos: Jutland Road Intersection

August 19: Duct bank work moving through the intersection and beginning to move eastward down Gorge Road.





# Construction photos: Jutland Road Intersection

August 19: Duct bank work and transitioning the conduit from the horizontal to the vertical configuration.





# Construction photos: Gorge Road

August 19: Placing the conduit and in the background, placing concrete over a section of completed conduit. The trench depth reached just over 3 metres allowing the conduit to be placed under other utilities in the street.





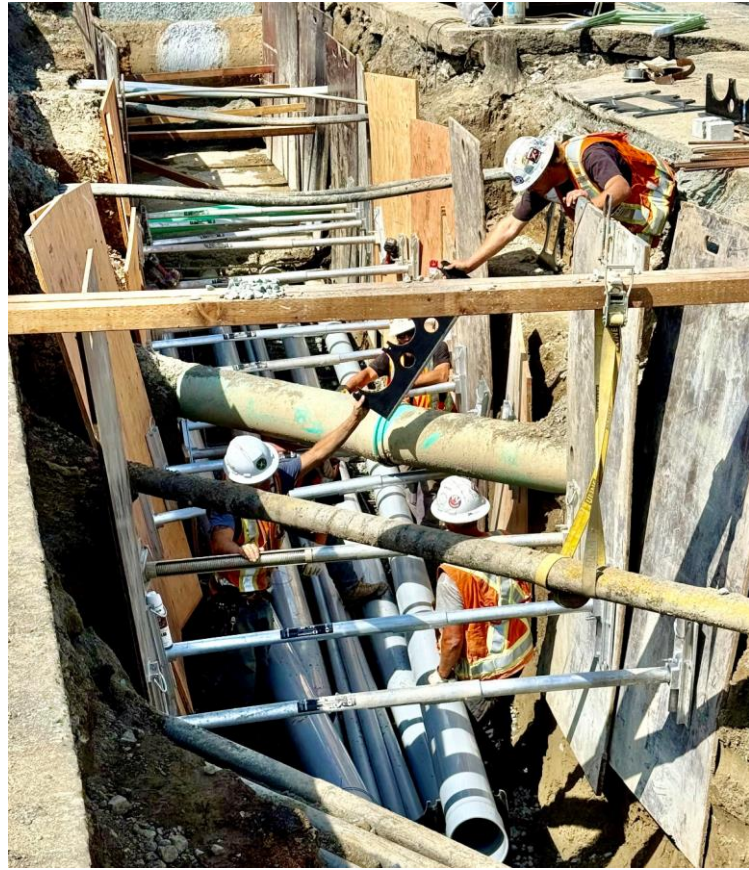
# Construction photos: Gorge Road

August 19: Conduit placement work, and in the foreground, and the narrowing of the trench width and slowly rising to a 2-metre depth.





# Construction photos: Gorge Road



August 19: The complexities of placing the transmission cable duct bank around other utilities and keeping crews safe by placing shoring on the sides of the trench.





# Construction photos: Gorge Road

August 19: Removing material for the trench excavation to the east of the Jutland Road intersection.





# Construction photos: Gorge Road

August 19: Duct bank work in the foreground, and to the west down Gorge Road, the completed paving work.





# Construction photos: Jutland Road Intersection

August 26: Completed paving of the entire Jutland Road intersection. Northbound and southbound lanes were open to traffic the night August 25, and the westbound lane on Gorge Road west of the intersection was open the night of August 26. The road line painting will be done the night of August 29, with the green paint applied at night sometime during the week of September 2.





# Construction photos: Gorge Road

August 26: Crews working down Gorge Road eastward toward Dunedin Street.





# Traffic management plan – Gorge Road

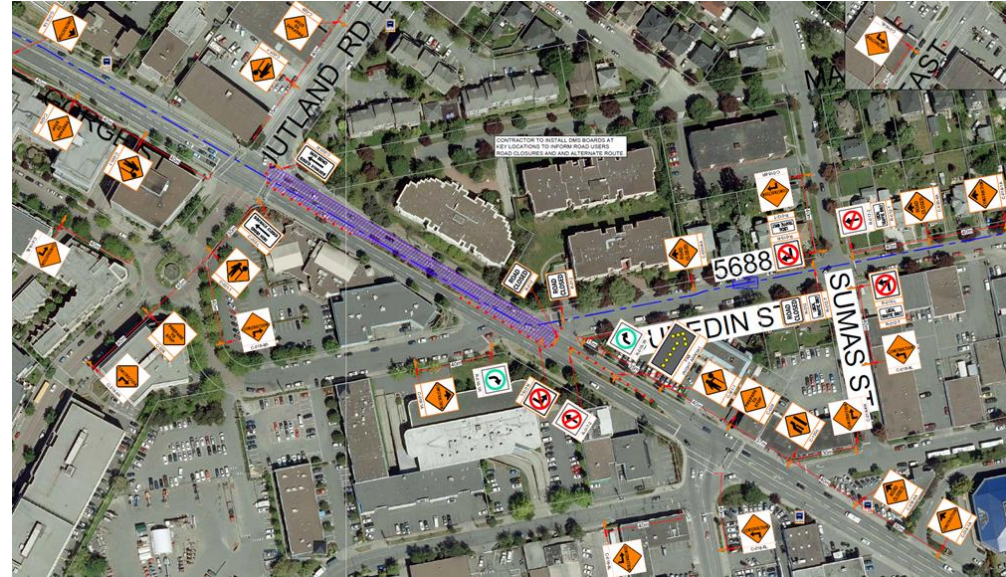
## Gorge Road (east of Jutland Road to Dunedin Street)

### Work timeline:

- Duct bank excavation is underway week of August 18.
- Restoration work including re-paving on September 5, followed by concrete bike curbing and the painting of road markings.
  - The curbing and line painting will likely be done after our duct bank work is past the Dunedin and Sumas intersection so there is a good detour in place.
- Estimated completion of all construction and restoration work within this section is mid-October.

### Traffic management:

- Westbound lane closed through September 5 and traffic detoured via Dunedin Street. It will be closed for a few days in October for final restoration work.
  - Douglas Street and Burnside Road are recommended as alternate route.
- Eastbound lane remains open.
- Follow flaggers and detour signs.





# Traffic management plan – Gorge Road

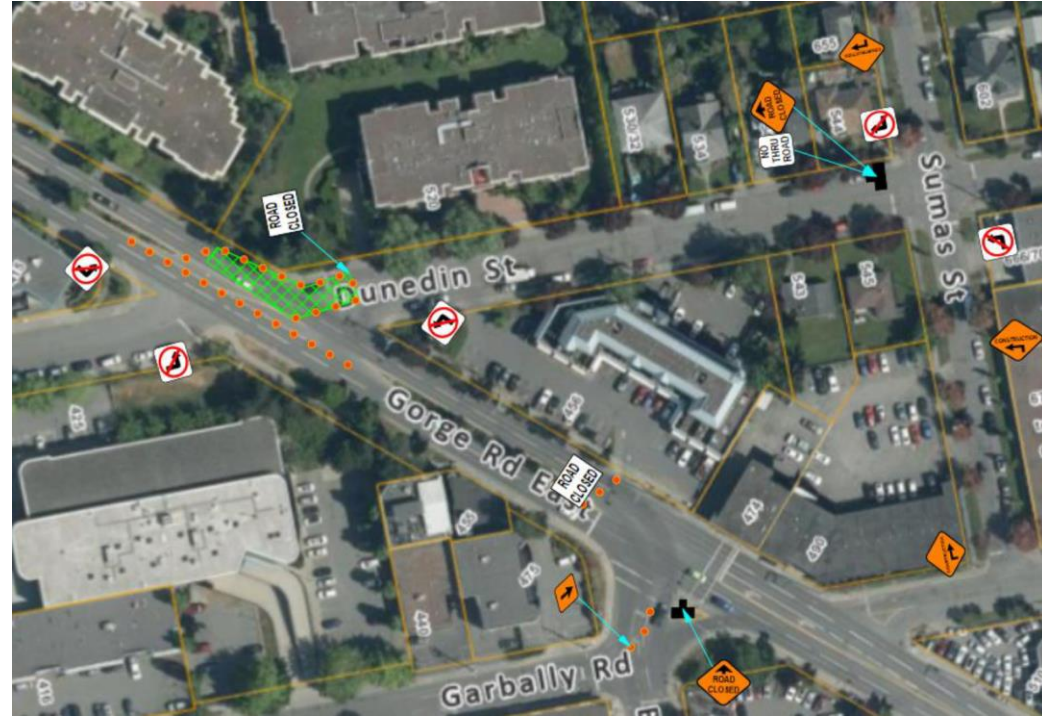
## Gorge Road and Dunedin Street intersection

### Work timeline:

- Duct bank excavation at the Gorge Road and Dunedin Street intersection from September 2 to 5.
- Restoration work including re-paving on September 5.

### Traffic management:

- Gorge Road will be closed westbound at Garbally Road, though access to the businesses at 456 Gorge Road will be maintained.
- No left turn will be permitted from Gorge Road onto Dunedin Street.
- At the Dunedin Street – Sumas Street intersection, “Road Closed Ahead” and “No Through Traffic” signs will be posted to advise of the closure ahead.
  - Residents between Sumas Street and Gorge Road East will be able to access their residences.
- Westbound lane along Gorge Road re-open on September 6.
- Follow flaggers and detour signs.





# Traffic management plan – Dunedin Street

## Section 1: Dunedin Street (Gorge Road to Sumas Street)

### Work timeline:

- The first project concrete vault along the duct bank route is underway on September 8. The vault work will take about two weeks.
- Re-paving and any repainting of road markings towards the end of September.
- Estimated completion of all construction and restoration work within this section is early October.

### Traffic management:

- Closed except for local traffic.
  - South lane used for construction access and single-lane alternating traffic.
- North lane is where the duct bank will be placed.
- No parking on either side of the street within the designated work zones.
- Follow flaggers and detour signs.

Dunedin Street traffic management: while the map shows the entire road being closed off the work will be done in sections. The first section of closed road will be from Gorge Road to Sumas Street. Once work is finished crews will then move to the second section of Dunedin Street between Sumas Street and Burnside Road.

