

## UPDATED Construction Notice

### Industrial Avenue between 200 Street & 203 Street, Langley

**April 29, 2026**

We're working closely with the Surrey Langley SkyTrain Project team to accommodate the rapid transit extension from Surrey to Langley. This work includes pole modifications and streetlight upgrades along Industrial Avenue.

Our crew will work on the north side of Industrial Avenue, starting at 200 Street and progressing east in Langley (see the map on page 2 for the specific location).

**Where:** Industrial Avenue between 200 Street & 203 Street, in Langley.

**When (UPDATED):** Anticipate start and completion on **Sunday, May 3, 2026** (work previously was scheduled in the week of April 22).

**Working Hours:** 7 a.m. to 7 p.m.

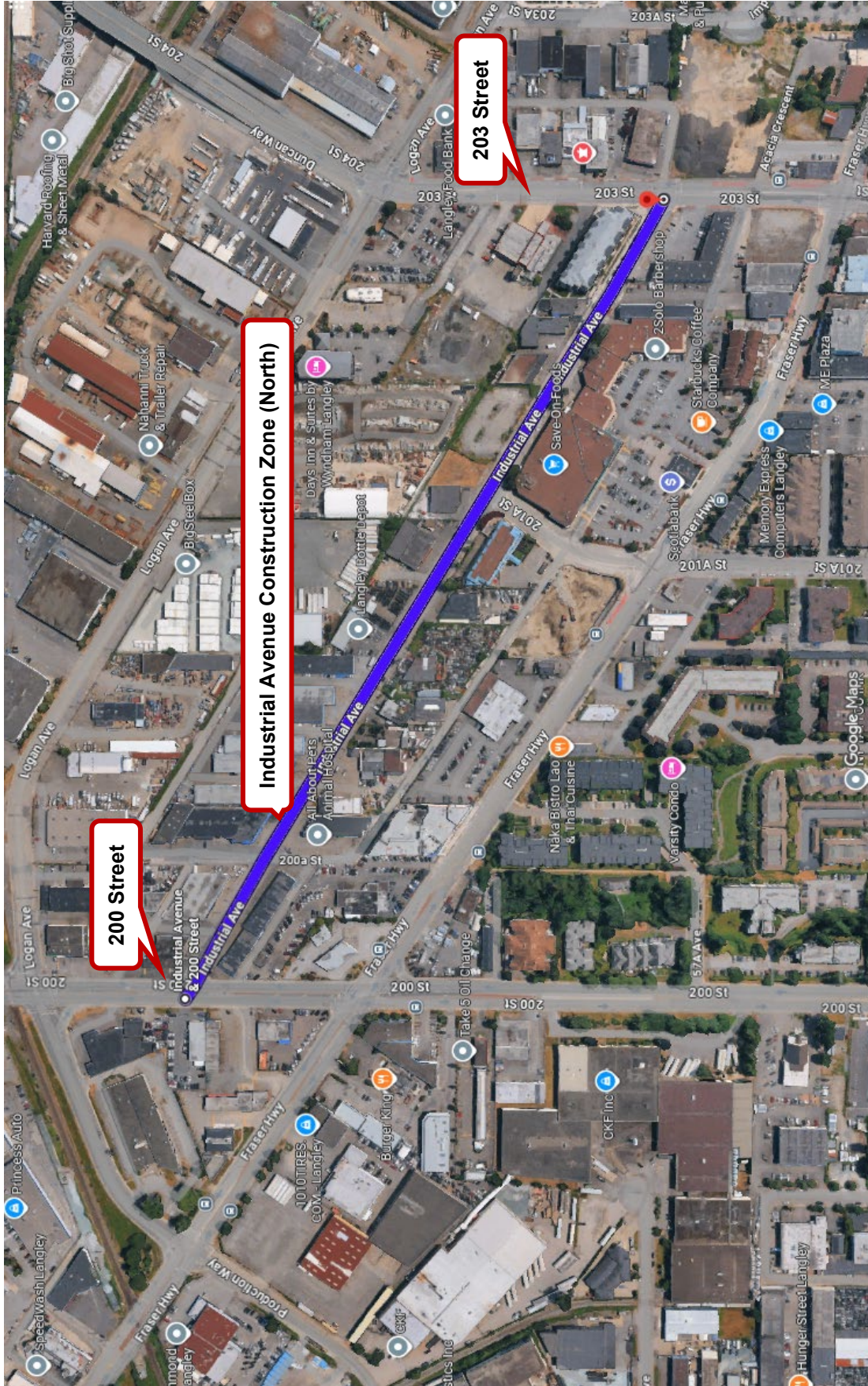
A planned outage before May 3 will be required to safely complete this work. Once the outage is scheduled, affected BC Hydro account holders will receive a separate notification (auto-dialer and email). Please ensure your account contact information is up to date.

Safety is our top priority. We will be working within the current Surrey Langley SkyTrain road closures. No additional traffic impacts are expected. Access to businesses and parking will be maintained with temporary traffic and parking restrictions to accommodate the maintenance vehicles on site (see map on page 2).

Drivers are advised to plan ahead and expect delays. Please reduce speed in the construction zone and follow the directions of traffic control personnel and posted signage. Cyclists are advised to look for [alternative bike routes](#) while work is underway on Fraser Highway. <https://www.surrey.ca/cycling>

If you have any questions or would like more information about our work to relocate the power lines and equipment, please contact us at 1-866-647-3334. Look for additional updates at [www.bchydro.com/skytrain](http://www.bchydro.com/skytrain).

For inquiries directly related to the SkyTrain extension project, please contact [surreylangleyskytrain@gov.bc.ca](mailto:surreylangleyskytrain@gov.bc.ca)



Above: Industrial Avenue between 200 Street & 203 Street, Langley & 196A Street in Langley, is highlighted in blue.