

Construction Notice – Electrical Upgrade Work Fraser Highway and 156 Street Surrey

July 15, 2024

We're working closely with the Surrey Langley SkyTrain Project team to accommodate the rapid transit extension from Surrey to Langley. This work includes the installation of a duct bank to accommodate the relocation of power lines from the north side of Fraser Highway to the south side.

A duct bank is a series of plastic conduits encased in concrete that house and protect underground cables. Construction will result in some eastbound and westbound lane closures and will impact driveway access on Fraser Highway. Please see the map on page 2.

Where: Fraser Highway and 156 St in Surrey.

When: Anticipated to start July 18 with targeted completion by July 23.

Working Hours: Monday to Saturday from 7 a.m. to 5 p.m.

This work requires temporary traffic pattern changes. Traffic will be reduced to a single lane, in each direction along Fraser Highway. Access to 156 St from Fraser Highway will not be available. Please refer to page 2 for a map of detours.

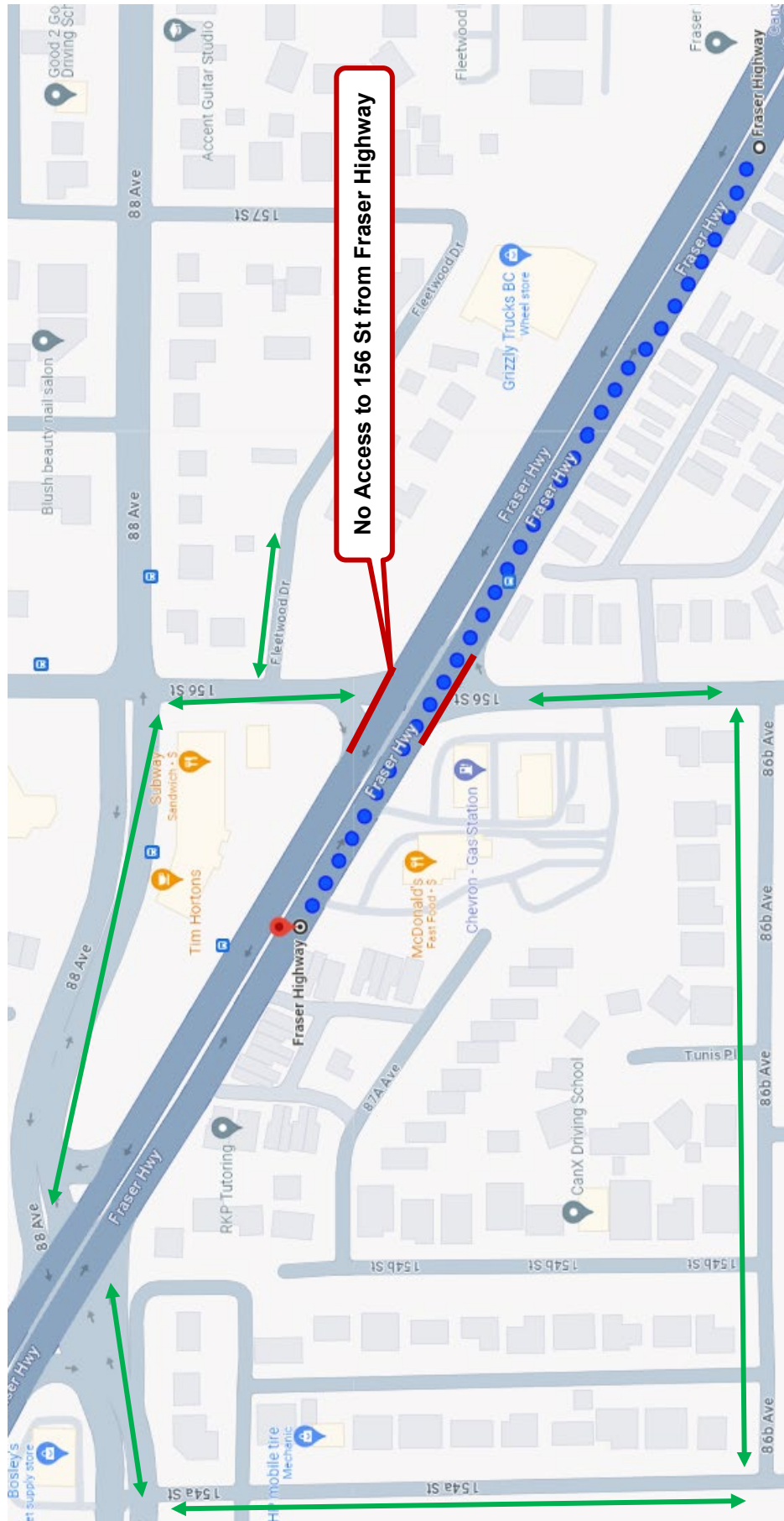
- To access residences and businesses north of Fraser Highway, please go north on 88 Ave to access 156 St north and Fleetwood Drive.
- To access residences and businesses south of Fraser Highway, please go south on 88 Ave to 154A St and 86B Ave to access 156 St south.
- Access to 88 Ave north and south from Fraser Highway will be maintained.

Safety is our top priority. Sidewalks, bike lanes and bus stops on this route will be impacted and may not be available. Please follow the onsite signage provided by TransLink and the direction of the crew on site.

Drivers are advised to plan ahead and expect delays. Please reduce speed in the construction zone and follow the directions of traffic control personnel and posted signage.

If you have any questions or would like more information about our work to relocate the power lines and equipment, please contact us at 1-866-647-3334. Look for additional updates at www.bchydro.com/skytrain

For inquiries directly related to the SkyTrain extension project, please contact surreylangleyskytrain@gov.bc.ca



Above: The work zone for ductbank work at Fraser Highway and 156 St in Surrey is in blue. Access routes are in green.