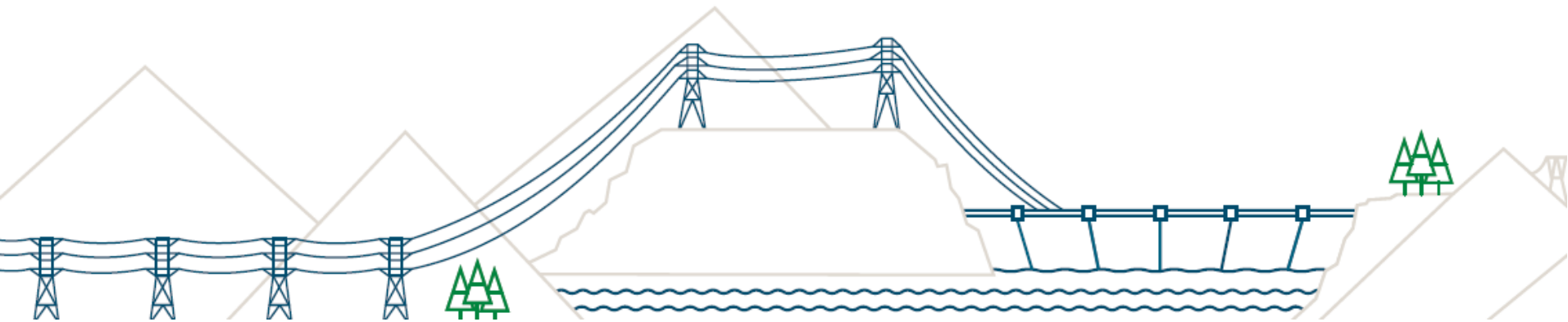


Kitimat LNG Interconnection Study



Virtual Meeting Etiquette

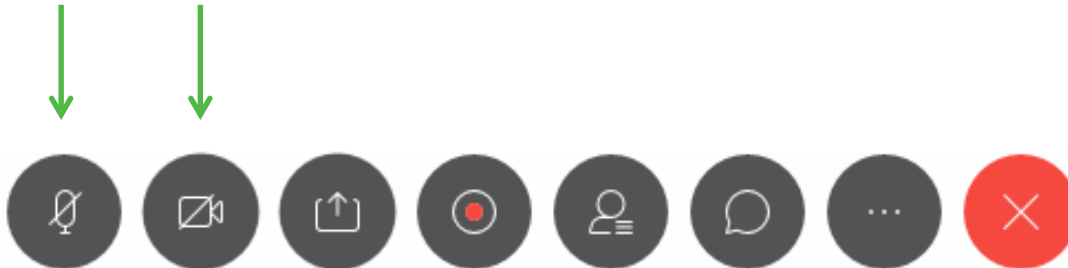


- Keep the conversation respectful by focusing on ideas, not the person
- Share the air time – ensure everyone gets heard
- To minimize distractions, keep yourself on “mute”
- We’ll not be recording these sessions, and ask for others not to record
- We will take notes and provide a summary report.

Cisco Webex reminders

We'll be using a few basic tools, which you can find if you hover your mouse over the bottom of the screen

Mute/unmute your mic
& turn your video on/off



Open the chat panel:

- to ask questions
- to provide feedback

Audio connection trouble?
See the alternative options here

Agenda

	Topic	Presenter
1	Project background and scope overview	Johnson Lee
2	Alternative walkthrough – station and line Google Earth study area review	David George Mark Alexander Peter Jung
3	Study timeline and next steps	
4	Questions and answers	Moderated by Lea Anne

Kitimat LNG Project and BC Hydro Study



- Kitimat LNG is proposing an all electric LNG Plant at Bish Cove
- Electricity to be provided by BC Hydro
- They've entered into our interconnection process
- We will prepare an estimate for our proposed interconnection facilities, to inform Kitimat LNG's final investment decision.

Interconnection Study Scope

Components of this interconnection study include:

- An additional new 287-kilovolt transmission line from Skeena substation in Terrace to a new substation near Kitimat.
- A new substation near existing Minette Substation in Kitimat.
- A 287-kilovolt line from the new substation to Rio Tinto Alcan's Kitimat substation.
- Upgrades at other existing substations including Skeena, Telkwa, and Rio Tinto's Kitimat Substation.
- Re-initiate the Prince George to Terrace Capacitors (PGTC) Project to increase transmission capacity between Prince George and Terrace.

Kitimat LNG associated connections including:

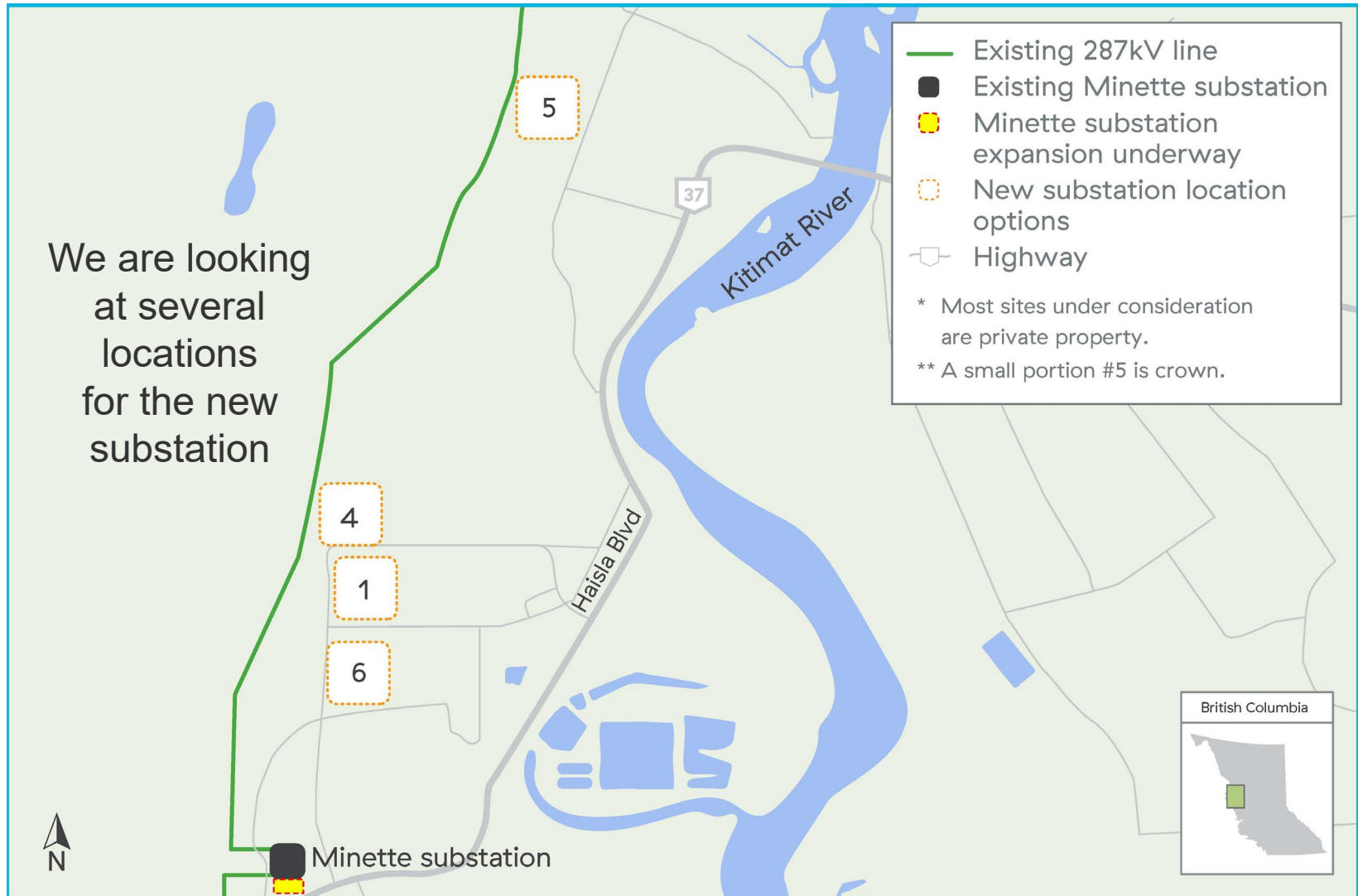
- Kitimat LNG will construct 287 kilovolt line(s) from the new BC Hydro substation to their facility at Bish Cove.

New 287 kV transmission line between Terrace and Kitimat

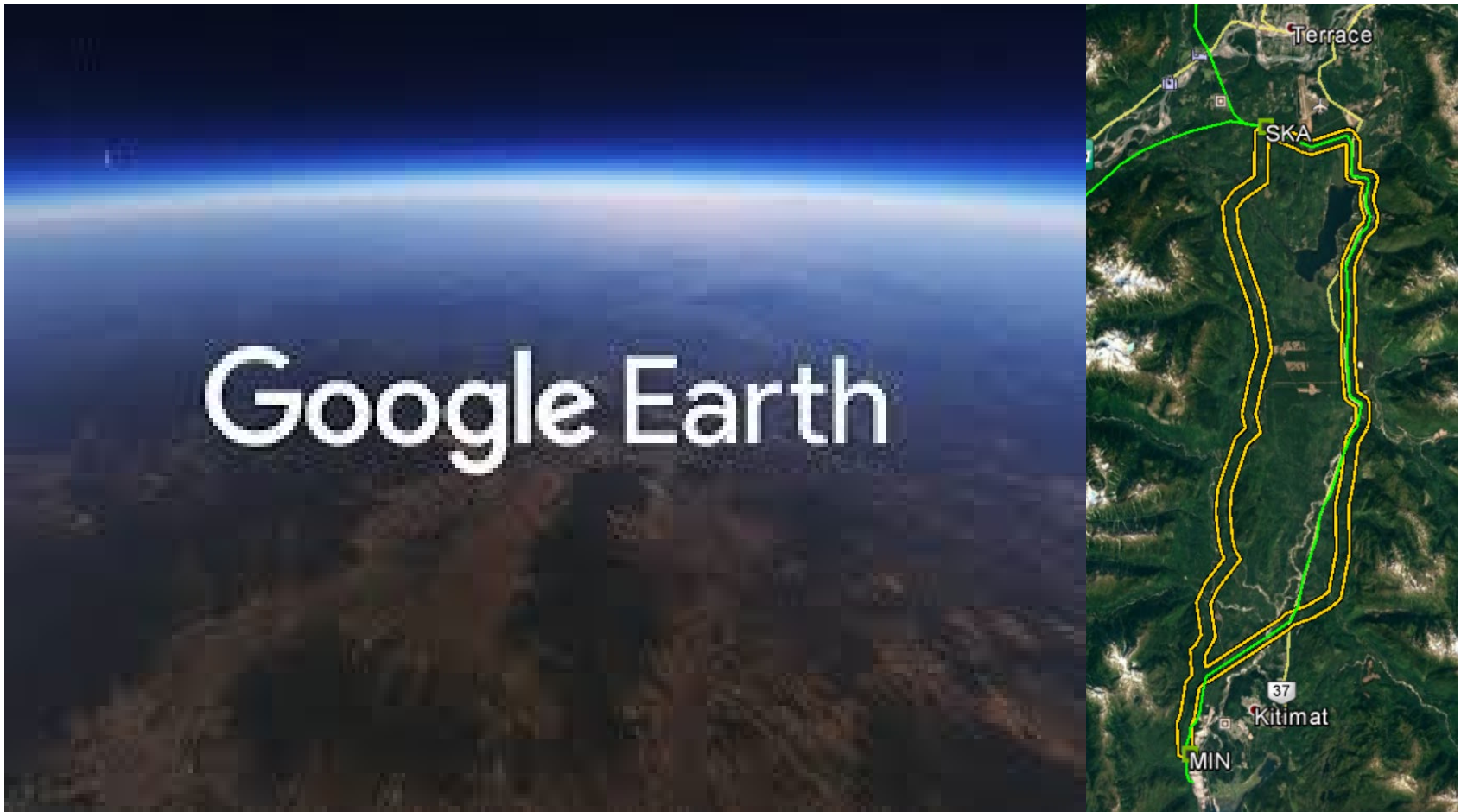
- A new high voltage transmission line is needed to meet the needs of Kitimat LNG's facility.
- The line is proposed to run along the Kitimat Valley.
- Two routing options:
 - Build overhead on west side
 - Build overhead on east side
- Existing 287 kV transmission line would remain for both options.



Substation Location Alternatives



Line Alternative Virtual Walkthrough



Study Timeline

- We're still in the study stage.
- Activities underway to spring/summer 2021 include:
 - Traditional use studies
 - Archaeological and environmental overview assessment
 - Assessment of road access, timber clearing and structure design
 - Consult and engage with Indigenous Nations
 - Issue engagement summary report and continue to engage stakeholders
 - Identify leading substation site and transmission route around spring 2021
- We'll provide Kitimat LNG a project plan around summer 2021 to inform their final invest decision.

Questions?





BC Hydro

Power smart