

Jervis Inlet and Agamemnon Crossing Power Line Replacement Project

Blackberry Festival 2025



What we're doing

- As part of an emergent capital project, we're replacing the 138 kilovolt (kV) power lines that cross Jervis Inlet and Agamemnon Channel.
- These power lines are at high risk of failure due to age and ocean spray corrosion, and the deteriorating aviation marker balls pose an ongoing risk to public safety and air traffic.



View from Jervis Inlet North

Nelson Island

138 kV line

Why we're doing it

- ✓ Maintain public safety for the marine area below the power lines.
- ✓ Enhance visibility for air traffic.
- ✓ Ensure electrical reliability for our customers in Powell River and the surrounding areas.



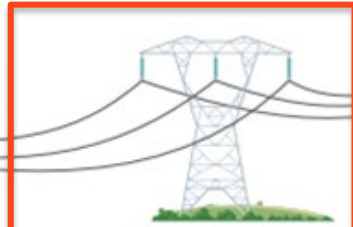
Delivering power to our customers

- There are 138 kV and 230 kV transmission lines that deliver electricity to substations serving about 10,000 customers within the City of Powell River and surrounding area, including Cortes Island and Texada Island.
- The transmission lines travel to the Saltery Bay Substation and then to Powell River.



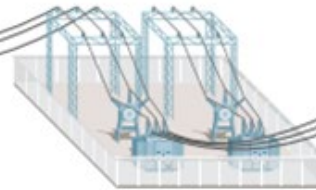
Generation

Electricity is generated by BC Hydro and independent power producers.



Transmission

Electricity is moved from where it's produced to where it's used.



Substations

Voltage is reduced at substations to provide power suitable for use in your home or business.

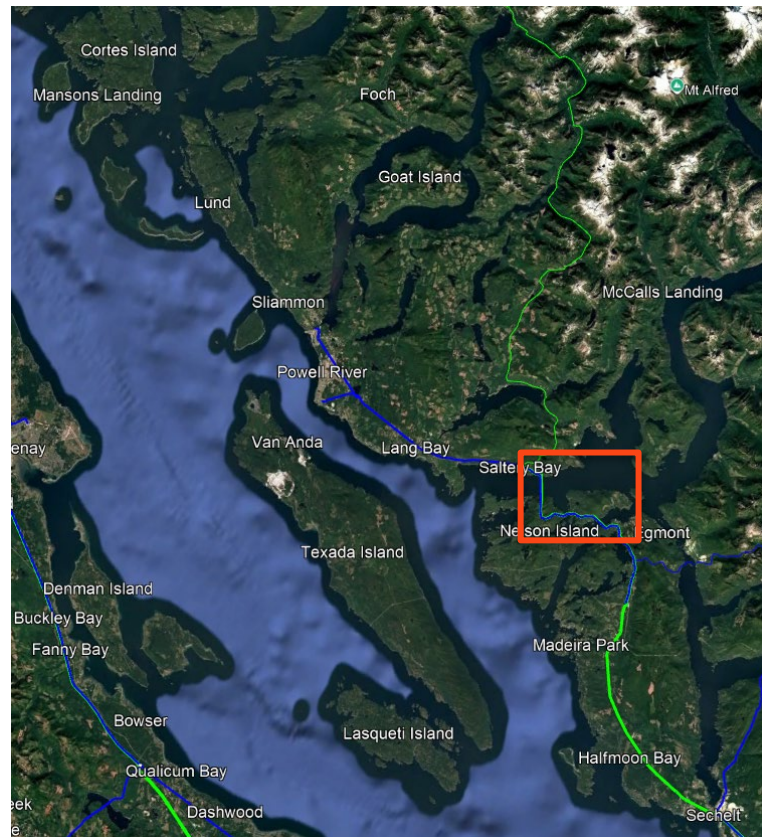


Distribution

Low voltage electricity is provided to neighbourhoods and businesses.

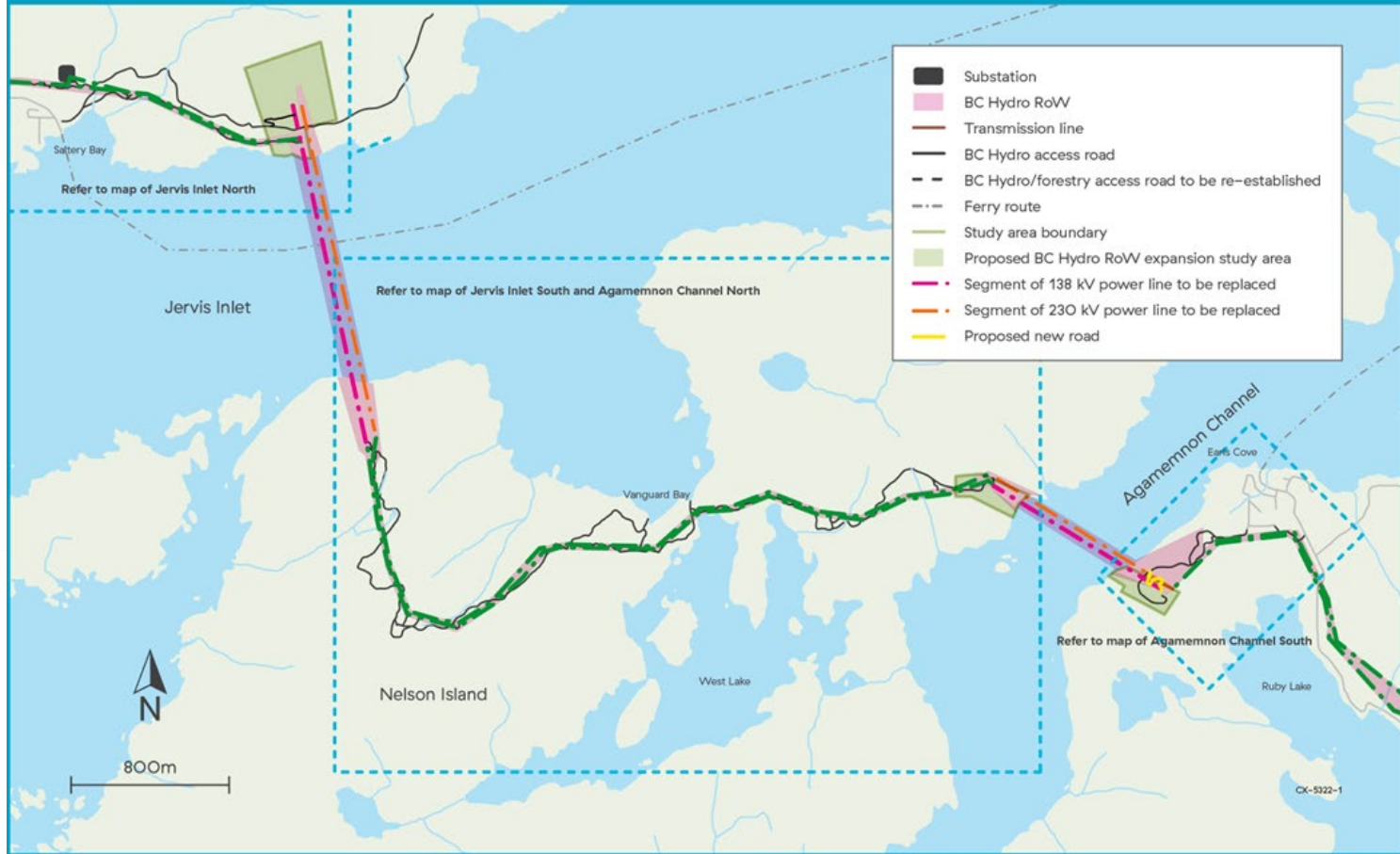
Delivering power to our customers

- The 138 kV line was put into service in 1956.
- The 230 kV line was put into service in 1970.
- Through this project, we will replace the 138 kV power lines that cross Jervis Inlet and Agamemnon Channel.



Jervis Inlet & Agamemnon Channel—Power line replacement

Project overview map



Planned system improvements

- ✓ **Increased capacity for future growth:**
The 138 kV power line marine crossings will be upgraded to 230 kV standards.
- ✓ **Enhanced reliability:** After the 138 kV line marine crossings are replaced, there will be two transmission lines available.
- ✓ **Future safety and reliability improvements:** The 230 kV line and the aviation marker balls at the two marine crossings will be replaced at a later date.



Transmission line ROW on Nelson Island



Public safety concerns

- The deteriorating aviation marker balls pose an ongoing risk to public safety and air traffic.
- The aviation marker balls are critical to ensuring that the line is visible to air traffic.
- One of the aviation marker balls fell off the line and landed on Nelson Island in early July.



Replacement aviation marker ball



Project Schedule

Date(s)	Location	Planned work
October 2025	Jervis Inlet	✓ We will remove the 138 kV line across the Jervis Inlet crossing.
Spring 2026	Agamemnon Crossing	✓ We will remove and restring the 138 kV lines across the Agamemnon Channel. ✓ The line will be upgraded to 230 kV standards.
Fall 2026 or Spring 2027	Jervis Inlet	✓ We will restring the lines across the Jervis Inlet crossing. ✓ The line will be upgraded to 230 kV standards.
Future improvements	Jervis Inlet and Agamemnon Crossing	✓ The adjacent 230 kV power lines and the aviation marker balls will be replaced at a later date.



Marine traffic closures

- Marine traffic closures will be required during our marine crossing power line work for the safety of the public and our crews.
- BC Ferries will maintain service by sailing around Nelson Island.
- BC Ferries will post schedules on www.bcferrries.com and update impacted communities through a service notice.



Marine traffic closures

- We're also informing the many marinas, boat clubs, and other marine organizations of the marine closure area and timing.
- Pilot boats will be positioned on either side of the power line marine crossing to warn boaters who may have missed the closure notice.
- There will always be one marine access route open around Nelson Island into upper Jervis Inlet.



Marine traffic closures

- **Jervis Inlet:**

- There will be a marine traffic closure for Jervis Inlet in October 2025 (dates are TBC).
- A second marine closure for Jervis Inlet will be required when the lines are restrung in the fall of 2026 or spring of 2027.

- **Agamemnon Crossing:**

- There will also be a marine traffic closure for the Agamemnon Crossing in the spring of 2026
 - There will be no impacts to the ferry route between Saltry Bay and Earls Cove during this closure.



Community engagement

- We will continue to consult with First Nations and engage with local government and the community as the project progresses.
- If you would like to learn more about this project, please contact:



Mary Anne Coules



250 608 1885



maryanne.coules@bchydro.com



bchydro.com/jervisagamemnon



Planned power outage

- There will be a 12-hour planned power outage in Power River and the surrounding area:
 - ❖ **Where: Powell River, Lund, Cortes Island, Texada Island, and Saltery Bay.**
 - ❖ **When: Sunday, September 14, 2025 from 7 a.m. to 7 p.m.**
- This outage is required for our crews to safely complete critical maintenance work on our transmission lines to maintain electrical reliability for our customers in this area.
- We thank you for your patience and support while this important work is completed.



