

Revelstoke Unit 6

An aerial photograph of a wide river valley. The river flows from the bottom left towards the center right. The valley is filled with dense green forests. In the background, there are large mountains, some with patches of snow. In the foreground, a concrete dam structure is visible, including a spillway and a powerhouse area with electrical equipment.

Virtual Open House
April 13, 2026

Virtual Open House Etiquette



- Cameras are turned off to save bandwidth
- Open House is for discussion of REV 6
- Use the 'raise your hand' button for comments/ questions
 - One question and a follow-up
 - Additional questions after all have had a turn
- Share air space so that everyone can participate
- Challenge ideas, not people
- We're not recording this session, and kindly ask that others don't record



Agenda

- Welcome
- Dam and Generating Station
- Project Overview
- Project Benefits
- Revelstoke Unit 6 Components and Activities
- Workforce, Employment and Training
- Procurement
- Housing
- Traffic
- Environment and Archaeology
- Schedule and Next Steps
- Revelstoke Reservoir and Downstream of the Dam



Welcome

We're adding a sixth generating unit at Revelstoke Generating Station to:

- support electrification
- meet peak demand
- support the addition of renewable energy sources to our system

BC Hydro recognizes that the Revelstoke facility is built on the unceded traditional territories of the syilx Okanagan Nation, Secwepemc, and ʔamakʔis Ktunaxa.

We acknowledge the impacts that BC Hydro's system and operations have had on these Nations and the land they have made use of since time immemorial. We share in the responsibility to act as stewards for the land and care for its resources.



Revelstoke Reservoir



Revelstoke Dam and Generating Station

Located on the Columbia River, 5 km upstream from the City of Revelstoke.

Part of our Columbia system

- Revelstoke Reservoir and Mica Dam upstream
- Keenleyside Dam and Arrow Lakes Reservoir downstream

Generating Station was built to house six units; four were installed in 1984 and the fifth was added in 2010.

Electricity is delivered to the grid by two parallel 500 kilovolt transmission lines that run from the generating station to Ashton Creek Substation near Enderby.



Project Overview

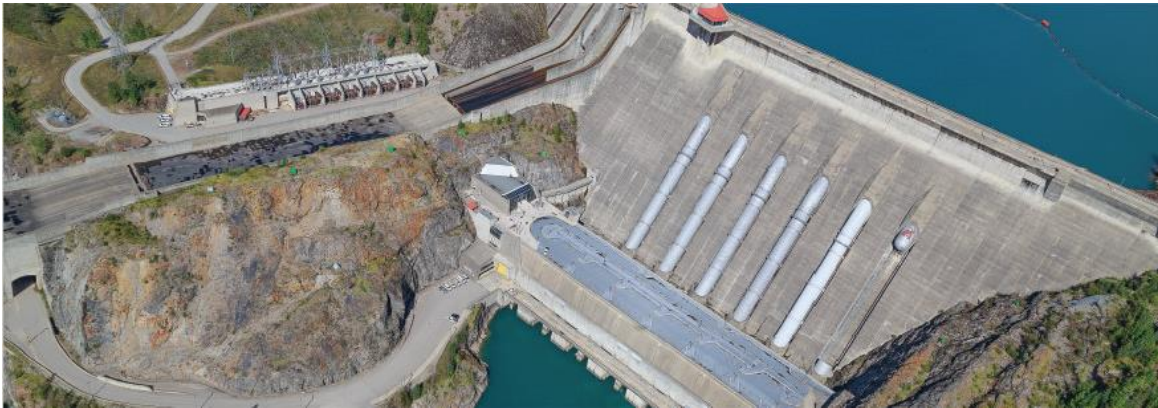
The project will:

- install the sixth and final generating unit at Revelstoke Generating Station

The project received:

- an Environmental Assessment Certificate (EAC) from the BC Environmental Assessment Office in 2018 that includes a Certified Project Description and conditions that the project must meet to proceed.
- a water licence in 2019 to operate the facility at peak capacity, as needed.
- an extension to the EAC in May 2025 that requires the project to be substantially started by November 2028.

Construction is starting in spring 2026 and Unit 6 is planned to be in service in December 2032.



Project Benefits

Revelstoke Unit 6 will add 500 MW of capacity to help support electrification, meet peak demand, and support the addition of renewable energy sources.

Jobs And Economic Benefits

- Construction will create 450+ person years of temporary employment and generate local spending of about \$60 million for goods, materials, and services.

Maximizing The Value Of Bc Hydro Assets

- We're making optimum use of an existing facility by adding a sixth unit.
- Increased flexibility in how we operate and manage our system in the event of outages and respond to uncertainty (e.g., extreme weather, unplanned outages).

Cost Effective

- This is the most inexpensive way to add 500MW of capacity to our system.

Minimize Footprint

- Won't involve a significant change to the facility and construction activities will be within the existing facility footprint.

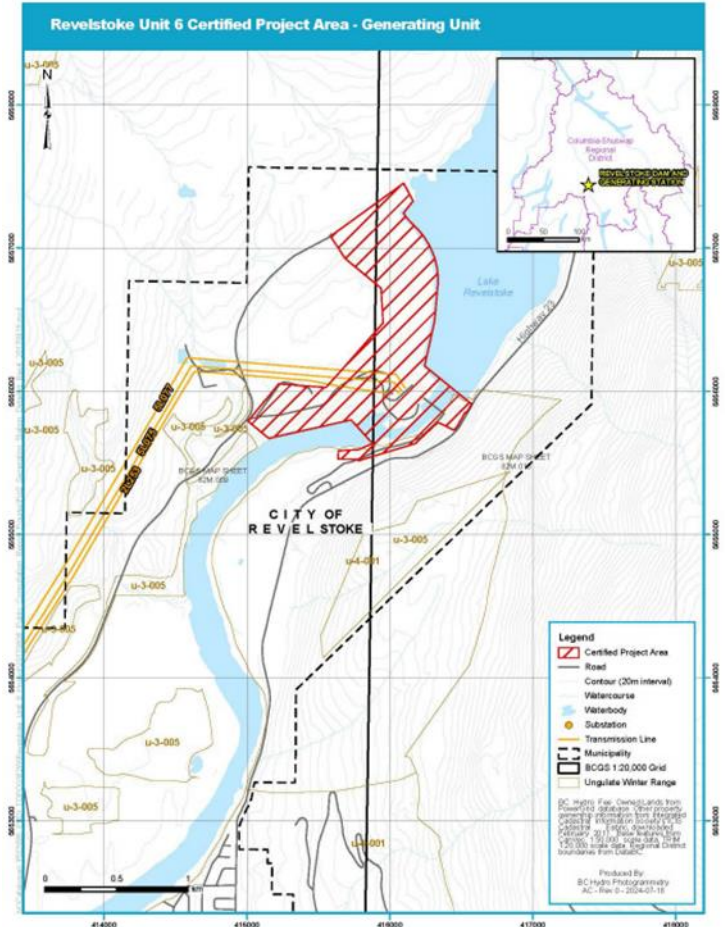
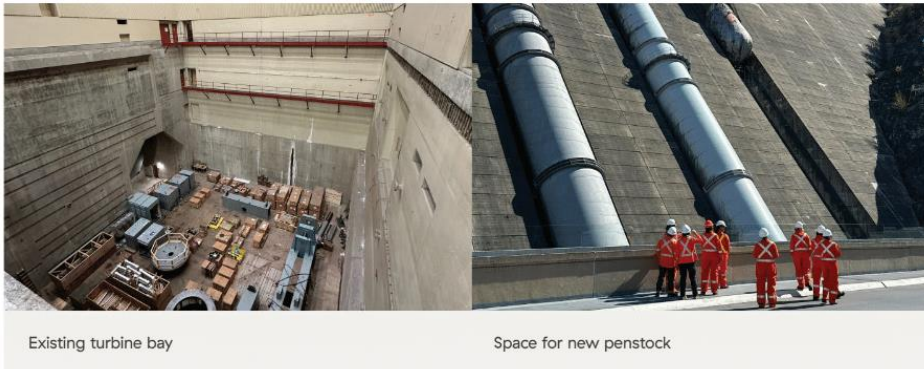


Revelstoke Unit 6

Key project components:

- A 500 megawatt (MW) generating unit in an existing turbine bay at Revelstoke Generating Station.
- A sixth steel penstock on the face of the dam.
- A generator transformer, switchgear, and ancillary mechanical and electrical equipment in the existing powerhouse.

The red hatched area in the figure to the right is where the key Revelstoke Unit 6 components will be located and where project activities will take place.



Revelstoke Unit 6

Key activities at the Generating Station site will include:

- Site preparation
- Construction of a new warehouse
- Penstock construction
- Civil construction
- Turbine and generator installation
- Gas Insulated Switchgear modifications
- Electrical and mechanical equipment installation
- Testing and commissioning

Construction is starting in Spring 2026 with left bank rock fall fencing and a new permanent warehouse next to the existing warehouse.

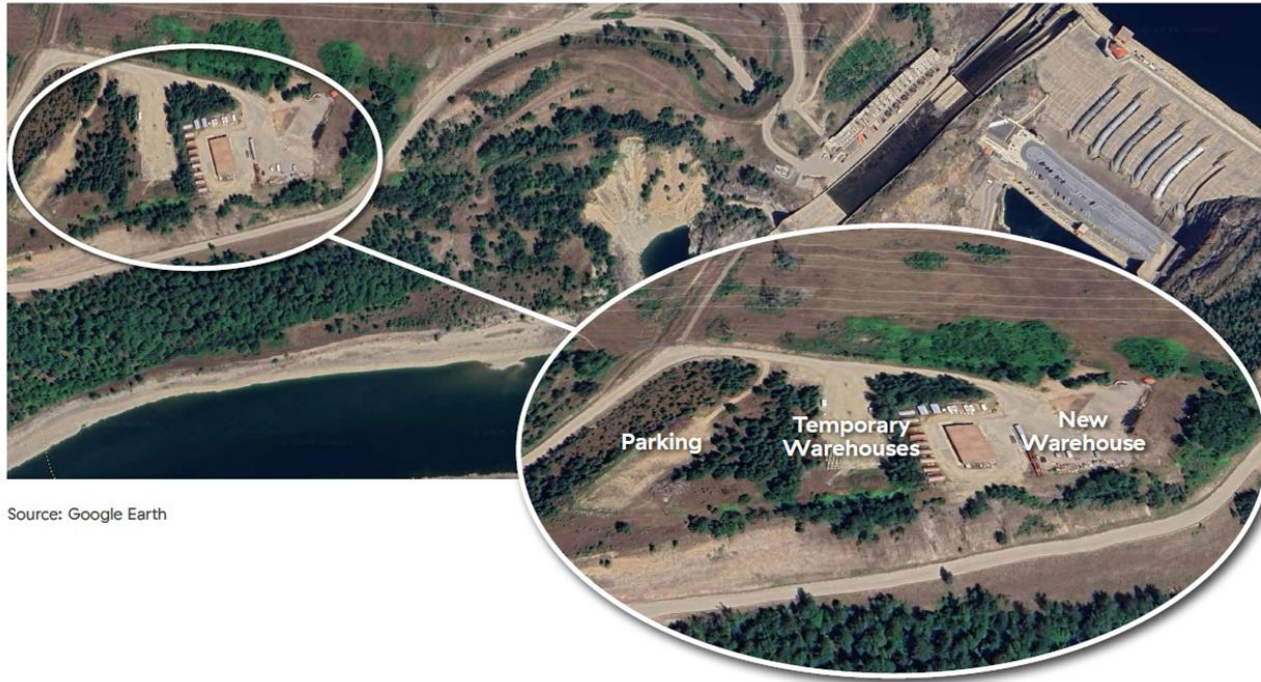
Work will take place within the fenced property boundary of the generating station and use the same construction and laydown areas used for the Revelstoke Unit 5 Project.

Project traffic will use Westside Road and Highway 23N for access.



Permanent Warehouse

- We'll build a new permanent warehouse to store spare parts and equipment currently stored in the Unit 6 pit inside the generating station and in the existing warehouse.
- In future, we'll also store spare parts for Unit 6 in the warehouse.



Source: Google Earth



Permanent Warehouse

- Once the warehouse is complete, we'll use the existing warehouse for contractor staging during REV 6 construction and for other capital work.
- The contract for the new warehouse will be awarded in April 2026, and work will proceed as follows:

Spring – Summer 2026	Warehouse design, material procurement, and site investigations (e.g., geotechnical and site surveys)
Fall 2026	Start site preparation and civil construction, including concrete work and underground support services
Spring – Summer 2027	Complete construction of underground support services as well as structural, mechanical and electrical work

- The workforce at site will peak at about 35 people in Fall 2026 and at about 55 workers in Spring 2027.
- Workers will stay in the community, using existing accommodations.
- The site will be accessed via Westside Road.



Left Bank Rock Fall Fencing

- To protect the penstock work area, we'll install three fences on the upper left bank and full pinned mesh screen on the lower section.
- We plan to award the contract for this work in April 2026, and work is planned to take place between June and October 2026.
- Helicopters will be used to drop supplies to staging areas on and near the left bank.
- The visitor centre will remain open; however, part of the parking lot will be used for trailers and setup.
- Approximately 13 workers will be involved and will stay in the community, using existing accommodations.
- Site access will be via Highway 23.



Other Upcoming Activities

In 2026 we will

- Install construction offices and trailers:
 - near the visitor centre at the dam
 - in the warehouse area
 - in other areas as needed
- Upgrade the parking lot at the visitor centre so that we can plow the roof in the winter
- Issue the Penstock Construction Request for Proposals on BC Bid in the spring
- Advance the contract for turbines and generators which is expected to be in place in Fall 2026

In Spring 2027 we will issue the Civil Works Request for Proposals on BC Bid.



Employment

Project construction will provide various employment opportunities.

The Project will hire construction tradespersons, operators, labourers, technicians, administration staff and supervisors under the provisions of the Columbia Hydro Constructors Agreement which will be used for most workers for Revelstoke Unit 6.

This union agreement:

- gives first preference to workers living within a 100 km radius of the project site and second preference to those living in the Columbia basin.
- has hire provisions for qualified workers who are First Nations
- has equity hire provisions for qualified workers who are women in non-traditional roles, visible minorities, and/or disabled.

BC Hydro will also hire staff directly to work on the project. All jobs with BC Hydro will be posted on bchydro.com

Information on how to access employment opportunities will be available on the project website (www.bchydro.com/revelstoke6) as the project advances.

• Labourers	• Boiler Makers
• Electricians	• Iron Workers
• Communication, Protection and Control Technologists	• Pipe Fitters
• Winders	• Cement Masons
• Millwrights	• Painters
• Equipment Operators	• Other Miscellaneous
• Crane Operators	• Contractor's staff
• Metal Workers	• BC Hydro staff
• Carpenters	• BC Hydro apprentices
• Machinists	



Columbia Hydro Constructors

You can apply directly to CHC or apply to join a union.

Applying with CHC

- You can apply directly with CHC closer to the CHC work starting on site.
- CHC's email address will be provided about six months before CHC work starts.
- Resumes will not be accepted until then.

Joining a Union

Each union will have different criteria for joining, but generally:

- Fill out an application to join, listing experience, schooling, tickets, etc
 - Applicants need to have a BC Provincial Trade Qualification Ticket or an Interprovincial Red Seal ticket if the trade requires it
 - It's a benefit to have certificates like WHIMIS, First Aid, Fall Arrest, etc.
- Union will decide based on capabilities, demand, and existing union membership
- If accepted, the person would have to pay an initiation fee and monthly due

Bollermaker Lodge 359	
Bollermaker Welder	Bollermaker Fitter
Bricklayers & Allied Craft Workers Local 2	
Terrazzo Mechanic	
CMAW Local 1346 and BCRC Local 1907 (Carpenters)	
Carpenter	
Cement Mason Local 919	
Cement Mason	
IBEW Local 993 (Electricians)	
Inside Wire	Winder
Ironworkers Local 97	
Ironworker (Rebar)	
CSWU Local 1611 (Labourers)	
Security Guard	First Aid Attendant
Labourer	Vibrator
Swamper	High Scaler
Driller's	Groutperson
Driller's Helper	
Millwright Local 2736	
Millwright	
MoveUp Local 378 (Office & Technical)	
Clerk (clerical)	Inspectors
Quantities Technician	Environment Technician
Surveyor	
Operator Engineers Local 115	
Front End Loader	Concrete Pump Operator
Overhead Crane Operator	Boom Truck
Crane Operator	Forklift
Roller/Crane Apprentice	Zoomboom
Painters	
Painter	
Plumbers & Pipefitters Local 170	
Fitter	Sprinkler Fitter
Welder	
Sheet Metal Local 280	
Sheet Metal Worker	Sheet Metal Welder
Teamsters Local 213	
Warehouse Person	Bus Driver
Boom Truck	Pick up Truck
Zoomboom	



Training

BC Hydro is:

Working with major employers, educational institutions and economic development agencies to support alignment of recruitment and training initiatives, including:

- Discussions with School District 19 regarding work experience, job shadowing, etc
- Discussions with Chamber of Commerce
- Discussions with Okanagan College regarding trades programs to support the project
- Potential apprenticeship positions with contractors hired for the project or with BC Hydro

Working with First Nations to implement a Training, Employment and Procurement Plan with measures to enhance hiring and retention of First Nation' members, including:

- Helping connect First Nations candidates with job opportunities
- Supporting career development through BC Hydro's Indigenous Career Exploration Program
- Establishing a scholarship or bursary program to support First Nations acquiring skills and training for the project
- Supporting First Nations' businesses being prepared for project procurement opportunities



Training

BC Hydro is providing a financial contribution to support project related training:

- Establishing a scholarship or bursary program to support secondary school students acquiring skills and training for the project
- Supporting the Youth Work in Trades Program and Youth Train in Trades Program at Revelstoke Secondary School and other interested secondary schools within 100km of Revelstoke
- Providing work experience opportunities to secondary students to gain 100 hours of worksite experience at the Revelstoke Generating Station
- Supporting Okanagan College in providing trades programs in the region to support the project



Procurement

Construction will be completed by independent contractors through several large contracts awarded according to BC Hydro's procurement policies.

Based on the experience of the REV 5 and Mica 5 and 6 projects, the following types of goods and services could be supplied, at least in part, by local and First Nations owned and operated enterprises:

- Accommodation
- Restaurant
- Grocery store
- Snow removal
- Aggregates
- Busing, trucking, and other transportation
- Avalanche monitoring and risk reduction
- Paving and asphalt repairs
- First aid
- Waste water removal
- Crane inspection and testing
- Vegetation removal
- Concrete
- Catering services
- Miscellaneous equipment rentals
- Miscellaneous electrical services
- Ground penetrating radar (GPR) scanning
- Surveying services
- Excavation services
- Security services
- Safety equipment and consulting
- Miscellaneous building supplies
- Miscellaneous plumbing services
- Water treatment services
- Construction management and engineering



Procurement

It is estimated that Revelstoke Unit 6 will result in local spending of about \$60 million for goods, materials and services.

We are working:

- To enhance procurement of materials, goods and services supplied by local suppliers by working with suppliers to identify ways to increase the involvement of local businesses in economic opportunities associated with the project
- With First Nations to develop a First Nations Training, Employment and Procurement Plan

Information on how to access procurement opportunities will be available on the project website (www.bchydro.com/revelstoke6) as the project advances.



Housing

Incoming workers and BC Hydro staff relocating to Revelstoke will be housed in the community.

Collaborating to Address Housing Needs

- We're working with the City of Revelstoke (City) and the Revelstoke Community Housing Society (RCHS) to reduce potential impacts on accommodation supply.
- To support this objective, BC Hydro has provided funding to RCHS to advance planning for housing units.

Ongoing Engagement

- We will continue working with the City, RCHS, and others to identify options for housing our workforce and to identify any unforeseen impacts on local housing during project construction.
- In 2026, workers will be housed in existing accommodation in the community.
 - We anticipate that the 2026 workforce will peak at about 50 workers in Fall 2026.

Future Projects

- We will be undertaking other projects in the Revelstoke area and will review housing options for these projects as planning advances.



Traffic

Traffic Management Plan

- We've developed and will implement a Traffic Management Plan (TMP) based on the Province's 2020 Traffic Management Manual for Work on Roadways.
- This Plan includes measures for traffic control, restricting access to active construction sites, public communications, wildlife mortality prevention, incident management and response.

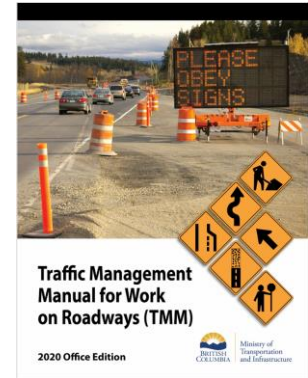
Public Communications Plan

Along with the TMP, and similar to what we did for Rev 5, we're developing a Plan to:

- communicate traffic related information to the public, emergency response providers, and other Westside Road users
- work with Ministry of Transportation and Transit (MoTT) to address concerns related to Ministry infrastructure

Monitoring And Addressing Road Conditions

- We'll monitor Westside Road conditions during construction and work with the City to determine if funding for repair or maintenance or other mitigation is needed as a result of project road use.



Environment and Archaeology

We developed the following plans in consultation with the BC Ministry of Water, Land and Resource Stewardship and First Nations to address potential project effects. The plans have been approved by the Environmental Assessment Office for implementation.

Construction Environmental Management Plan

- Provides requirements, standard protocols, and mitigation measures that will be required at minimum to reduce potential for adverse environmental effects during construction.

Wildlife Protection Plan

- Describes mitigations that will be implemented for the protection of wildlife and wildlife habitat during construction and operations.

Archaeological And Historical Heritage Resources Plan

- Provides performance-based heritage requirements, standard protocols, and mitigation measures to reduce potential effects to heritage resources during construction and operations.

Independent Environmental Monitor Terms Of Engagement

- Sets out the role, responsibilities, qualifications.
- Describes communications and reporting processes and requirements.



Environment and Archaeology

The following plans will be developed before operations in consultation with the BC Ministry of Water, Land and Resource Stewardship and First Nations prior to the start of operations.

Operations Environmental Management Plan

- Will address management of human-wildlife conflict, invasive plants, access, and emergency response.

Water Monitoring Plan

- Describes monitoring to be implemented during operations - discharge from Revelstoke Dam; water levels in Revelstoke Reservoir, mid-Columbia River and Arrow Lakes Reservoir; channel and bank erosion.

Fish And Fish Habitat Monitoring And Mitigation Plan

- Provides standard protocols and mitigation measures to reduce the potential for adverse effects to fish and fish habitat during operations.



Schedule and Next Steps

Task	Timing
Community Monitoring Committee first meeting	February 2026
Confirm how accommodation will be provided	Spring 2026
Construction starts	Spring 2026
Next Open House	Fall 2026
Left bank rock fall fencing and new warehouse	2026
Warehouse completion, start of penstock and intake operating gates	2027
Project construction substantially started	November 2028
Project in-service	Target – December 2032



Revelstoke Reservoir and Downstream of the Dam

Revelstoke Reservoir will continue to be operated within its normal range and show only minor changes.

Average flows downstream of the dam will be the same but discharge patterns will differ slightly from current operation.

Flow	Volume	How Often These Will Occur Compared to Now
Low	Below 12,000 cfs*	About the same amount of time
Medium	12,000 to 60,000 cfs	Less often
Higher	Over 60,000 cfs	More often
High	Over 75,000 cfs	Less than 1% of the time

*cubic feet per second

During high flows, the water level would be up to 0.5 m higher immediately below the dam and the level would decrease with distance downstream to where it wouldn't be measurable:

- Typical high July reservoir levels – 8 km downstream.
- Typical low January reservoir levels – 15 km downstream.



Thank you for attending

We'll continue to keep you informed as the project advances.

If you have any additional questions or comments about the project, please feel free to contact us or visit the project webpage:

- Email: projects@bchydro.com
- Phone: 1 866 647 3334
- Webpage: www.bchydro.com/revelstoke6



