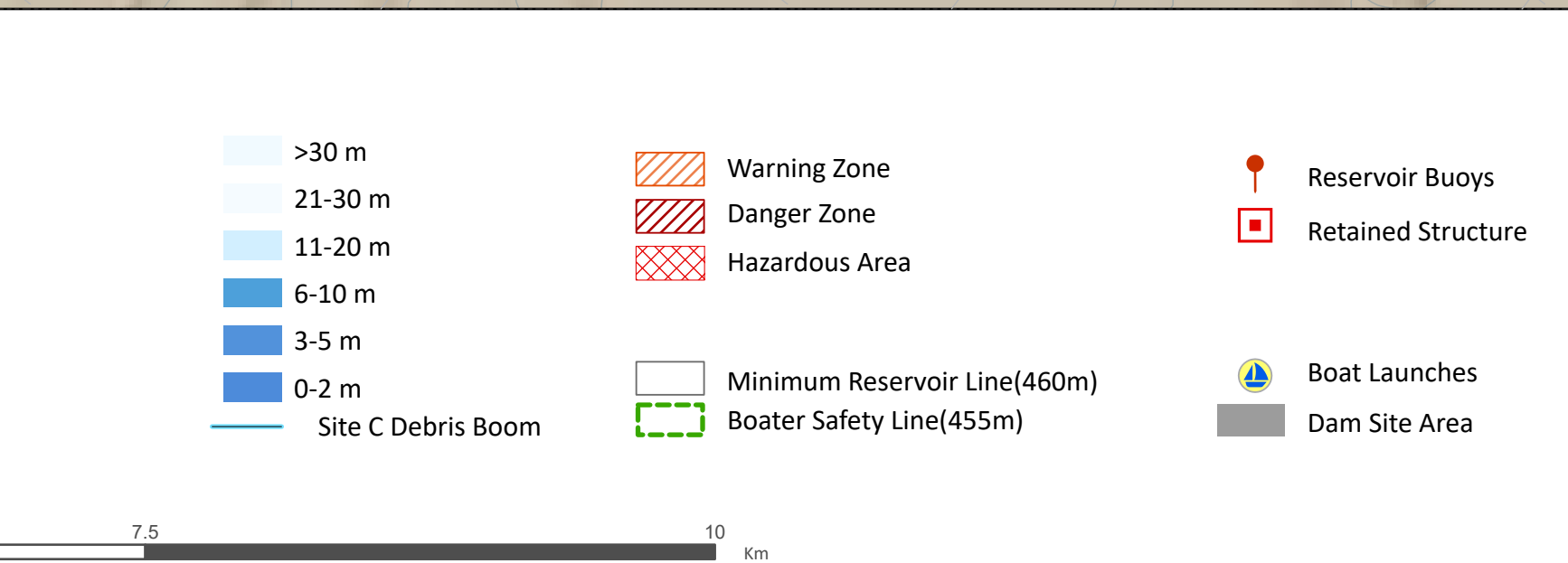


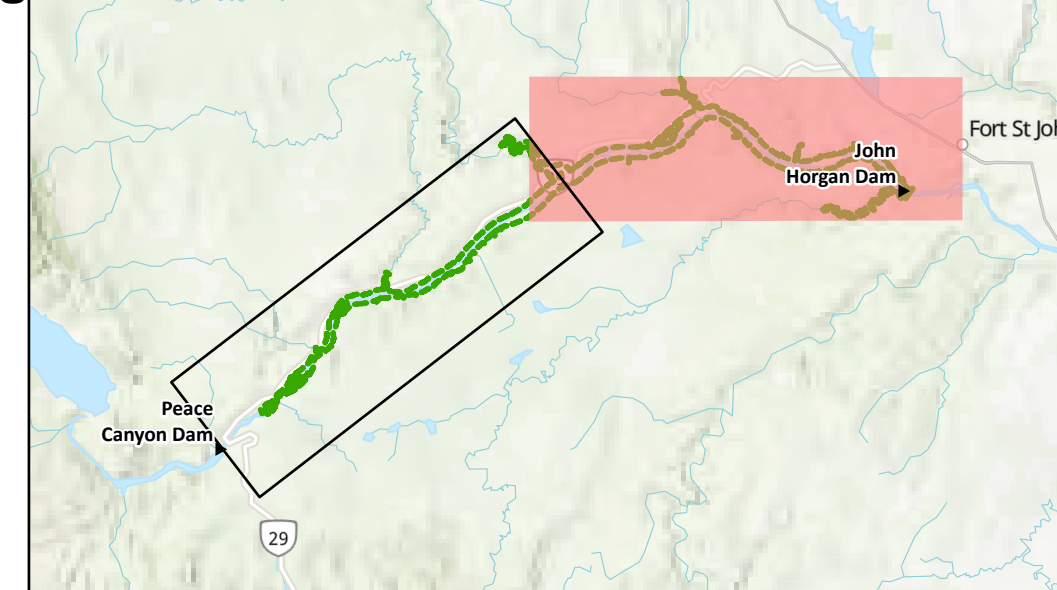
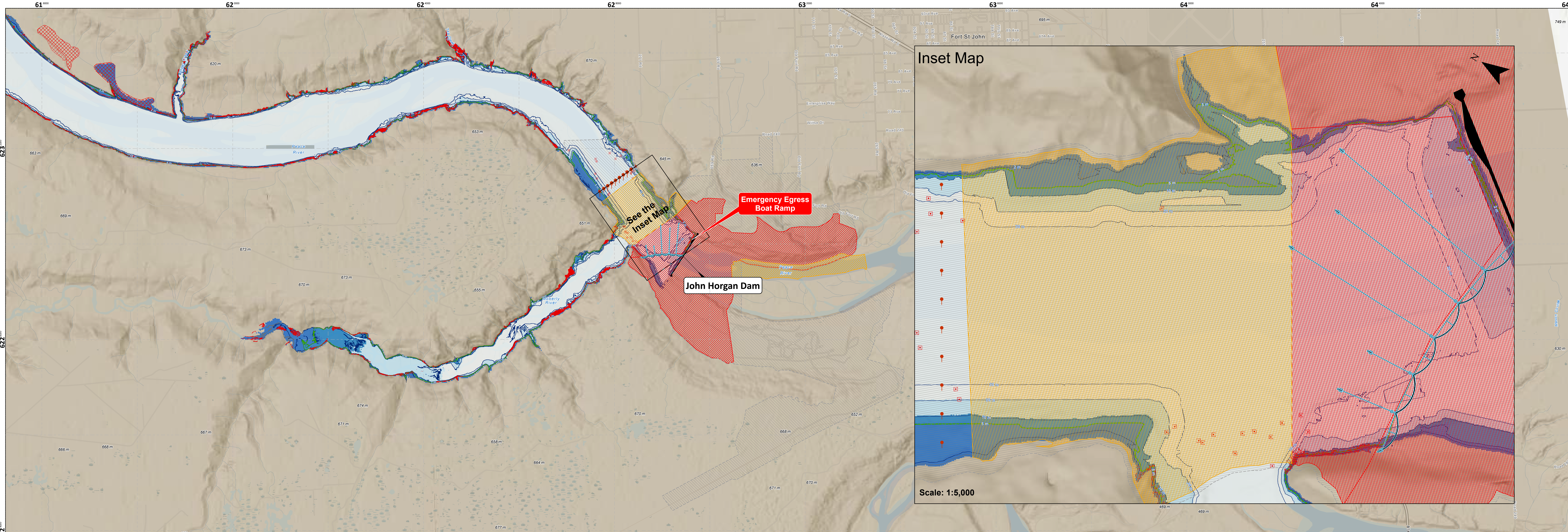
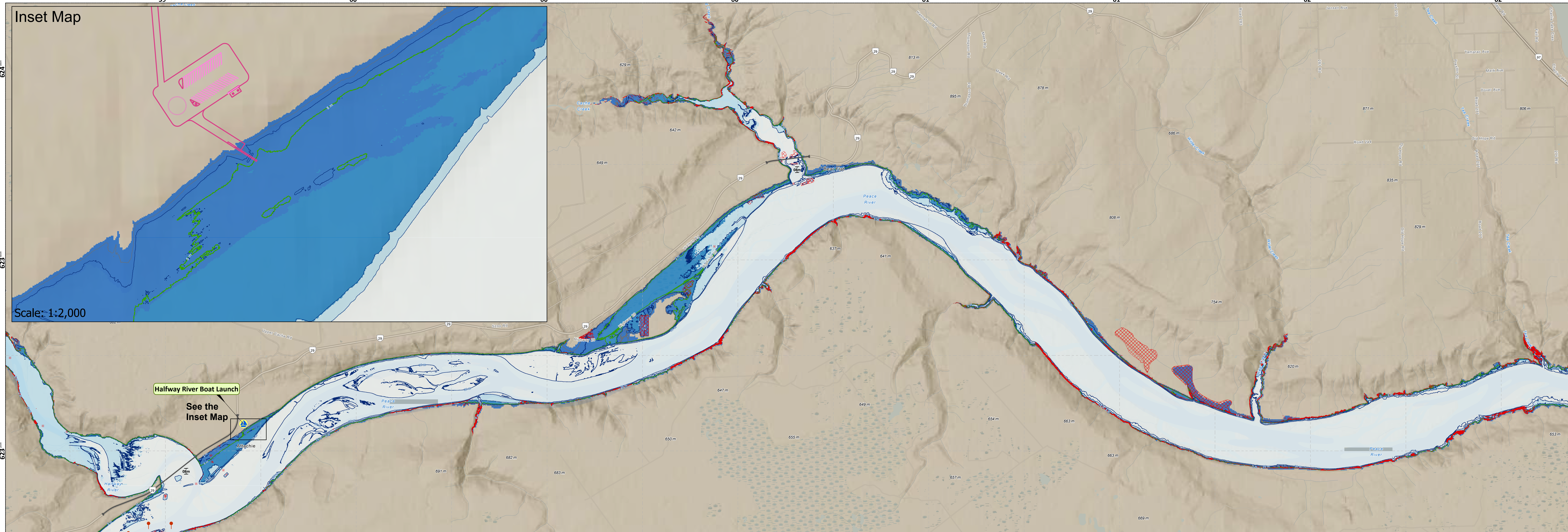
**Notes**  
 1. **Emergency Contact:**  
 911  
 BC Hydro, +1 (877) 311-86-11  
 2. Page 2 of 2  
 3. **Base map:** Esri Topographic base map  
 4. The datum for depth at 0 m is **460.0 m ASL**.  
 5. Use caution near submerged hazards.  
 6. Check local regulations before boating.

7. Depths may vary with seasonal water levels.  
 8. This map has been prepared to support safe recreational vessel use of the Site C Reservoir in accordance with condition 43 of the Canadian Navigable Waters Act approval.  
 While reasonable efforts have been made to depict bathymetry, navigation hazards, and other features relevant to vessel operators, the reservoir is a managed and dynamic environment. Water levels, shoreline conditions, debris, and hazards may change due to operational, environmental, or weather-related factors. This map is not an official nautical chart and is not a substitute for prudent seamanship, on site observation, official notices, or compliance with local regulations, posted signage and navigation aids. Users remain responsible for assessing conditions and navigating safely at all times.



**Náaché mege Reservoir**  
**Depth, Hazards & Access Points**  
**BC Hydro, Geomatics Services**  
**2026-05**





**Notes**  
 1. **Emergency Contact:**  
 911  
 BC Hydro, +1 (877) 311-86-11  
 2. Page 2 of 2  
 3. **Base map:** Esri Topographic base map  
 4. The datum for depth at 0 m is **460.0 m ASL**.  
 5. Use caution near submerged hazards.  
 6. Check local regulations before boating.

7. Depths may vary with seasonal water levels.  
 8. This map has been prepared to support safe recreational vessel use of the Site C Reservoir in accordance with condition 43 of the Canadian Navigable Waters Act approval.  
 While reasonable efforts have been made to depict bathymetry, navigation hazards, and other features relevant to vessel operators, the reservoir is a managed and dynamic environment. Water levels, shoreline conditions, debris, and hazards may change due to operational, environmental, or weather-related factors. This map is not an official nautical chart and is not a substitute for prudent seamanship, on site observation, official notices, or compliance with local regulations, posted signage and navigation aids. Users remain responsible for assessing conditions and navigating safely at all times.



- >30 m
- 21-30 m
- 11-20 m
- 6-10 m
- 3-5 m
- 0-2 m
- Site C Debris Boom
- Warning Zone
- Danger Zone
- Hazardous Area
- Minimum Reservoir Line(460m)
- Boater Safety Line(455m)
- Reservoir Buoys
- Retained Structure
- Boat Launches
- Dam Site Area

**Náaché mege Reservoir**  
**Depth, Hazards & Access Points**  
 BC Hydro, Geomatics Services  
 2026-05

