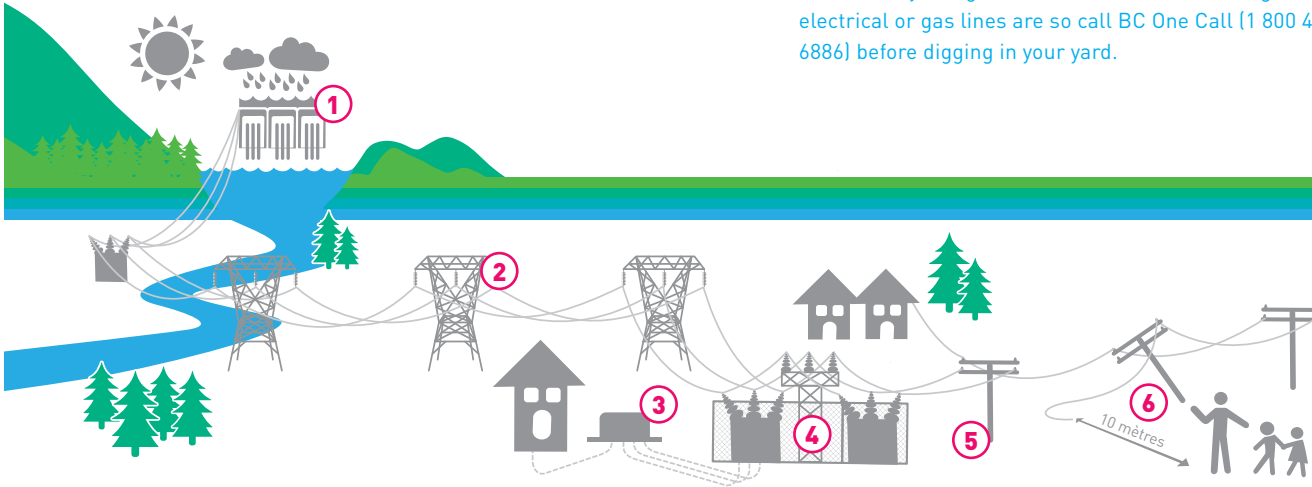


# ELECTRICITY AND YOUR FAMILY

## ELECTRICITY IN B.C.

Electricity is used all around us – at school, at home, and in the community. The power that BC Hydro generates at its dams is clean, renewable electricity that travels across the province.

There are important things to know about electricity to prevent the risk of shock or electrocution. Review these tips with your family to be safe.



## 1 DAMS

Many of the rivers and waterways that provide us with electricity are also popular recreation sites for picnics, swimming and boating. Water levels in some areas can change very quickly so it is important to be safe in these areas.

- Always obey signs in and around the reservoirs, lakes and rivers near a dam.
- Remember to always swim with adult supervision and make sure you wear a life-jacket when on the water.

## 4 SUBSTATIONS

Substations are the large, fenced-in areas with power lines running in and out, with many transformers inside. This space has high-voltage electricity running throughout it.

- Stay away from substations and obey all signs.
- If a ball or toy goes behind the fence, call BC Hydro (1 888 POWERON (1 888 769-3766) to report an electrical emergency or outage) and stay away from the area.

## 2 TRANSMISSION TOWERS

Transmission towers allow lines to carry high voltage electricity quickly and efficiently over great distances.

- Never climb or play on transmission towers.

## 3 PADMOUNT TRANSFORMER BOXES

Sometimes power lines are buried under the ground, and connected to padmount transformer boxes around the community.

- Do not play near padmount transformer boxes in your neighbourhood. Never poke anything inside or climb on top of the box.
- Call before you dig! You don't know where underground electrical or gas lines are so call BC One Call (1 800 474 6886) before digging in your yard.

## 5 POWER POLES

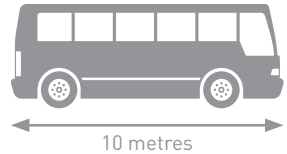
Power poles keep power lines and electricity off the ground and away from people.

- Never climb or play near power poles.
- Don't climb trees or fly kites near power lines.

## 6 DOWNED POWER LINES

Sometimes a power line may fall down during a windstorm, an accident, or if the tower or pole is damaged. These power lines may still have electricity moving through them and are dangerous.

- Keep back at least 10 metres (ie. length of a school bus) from a downed power line.
- Call 911 or your local emergency number.



Keep important numbers close at hand

### BC Hydro

1 888 POWERON (1 888 769-3766) to report an electrical emergency or outage, \*49367, \*HYDRO from your cell phone

### Call Before You Dig – BC One Call

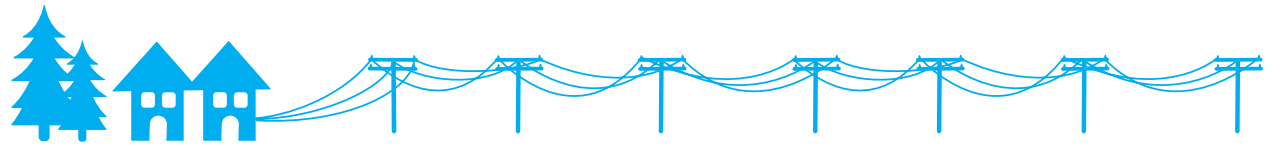
1 800 474 6886 \*6886 from your cell phone

For more information on electrical safety, visit [bchydro.com/safety](http://bchydro.com/safety). For more information on our school programs, visit [bchydro.com/firstwave](http://bchydro.com/firstwave).

**BC hydro** 

FOR GENERATIONS

# SAFETY CHECKLIST



Recognize the DANGER HIGH VOLTAGE signs



Keep fingers and foreign objects out of electrical sockets



Keep electrical appliances away from water



Keep kites and balloons away from power lines



Don't overload electrical outlets



Be cautious near power lines and padmount transformer boxes in the community



Build a family emergency kit in case of a power outage



Keep important numbers close at hand

## BC Hydro

1 888 POWERON (1 888 769-3766) to report an electrical emergency or outage,  
\*49367, \*HYDRO from your cell phone

Call Before You Dig – BC One Call 1 800 474 6886 \*6886 from your cell phone

## IMPORTANT NUMBERS

---

---

---

---

---

---

---

---

---

---