

**2013 Resource Options Report Update**

---

---

**Appendix 8-A1**

**Run of River Report**

**Report Attachment: Map E-1**

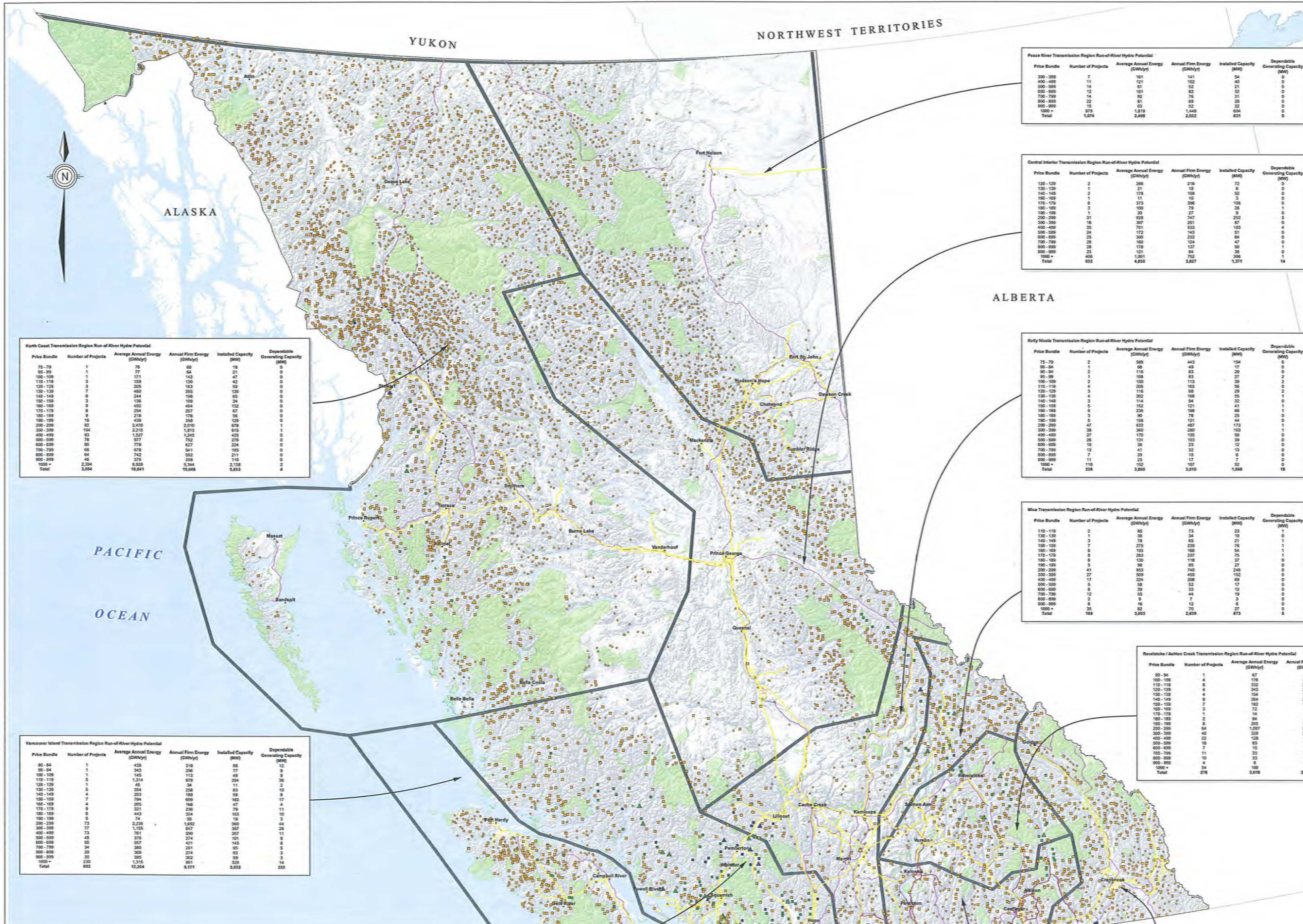
---

---





Run-of-River Hydroelectric Resource Assessment for British Columbia 2010 Update



Peace River Transmission Region Run-of-River Hydro Potential

Price Bundle	Number of Projects	Average Annual Energy (GWh/yr)	Annual Firm Energy (GWh/yr)	Installed Capacity (MW)	Dependable Generating Capacity (MW)
300-399	7	161	141	54	0
400-499	11	121	102	40	0
500-599	14	61	52	21	0
600-699	12	101	82	32	0
700-799	14	82	71	21	0
800-899	22	81	69	28	0
900-999	15	63	52	22	0
1000+	879	1,819	1,448	604	0
Total	1,014	2,898	2,022	831	0

Central Interior Transmission Region Run-of-River Hydro Potential

Price Bundle	Number of Projects	Average Annual Energy (GWh/yr)	Annual Firm Energy (GWh/yr)	Installed Capacity (MW)	Dependable Generating Capacity (MW)
120-129	2	206	216	72	0
130-139	1	21	19	7	0
140-149	2	118	108	32	0
150-159	3	11	10	3	0
170-179	6	373	306	108	0
180-189	3	100	79	28	1
190-199	16	32	27	87	0
200-299	31	628	547	252	0
300-399	16	307	251	87	0
400-499	35	701	533	183	0
500-599	24	172	143	51	0
600-699	23	300	232	84	0
700-799	28	193	124	47	0
800-899	18	178	137	50	0
900-999	25	131	94	36	0
1000+	405	1,350	1,050	350	0
Total	621	4,810	3,827	1,371	14

Kelly Nicola Transmission Region Run-of-River Hydro Potential

Price Bundle	Number of Projects	Average Annual Energy (GWh/yr)	Annual Firm Energy (GWh/yr)	Installed Capacity (MW)	Dependable Generating Capacity (MW)
75-79	2	598	443	154	0
80-84	1	66	49	17	0
90-94	2	110	83	29	0
95-99	1	108	83	27	0
100-109	2	100	113	39	2
110-119	4	200	182	56	0
120-129	3	116	88	29	2
130-139	4	202	168	56	0
140-149	3	114	94	32	0
150-159	5	126	121	36	1
160-169	5	226	166	63	1
180-189	3	90	78	25	0
190-199	5	124	114	44	0
200-299	47	632	487	173	1
300-399	38	380	280	103	0
400-499	27	170	125	50	0
500-599	26	131	103	39	0
600-699	19	39	23	12	0
700-799	13	41	32	13	0
800-899	7	23	17	6	0
900-999	11	23	17	7	0
1000+	118	1,020	787	320	0
Total	358	3,858	2,810	1,068	18

Mica Transmission Region Run-of-River Hydro Potential

Price Bundle	Number of Projects	Average Annual Energy (GWh/yr)	Annual Firm Energy (GWh/yr)	Installed Capacity (MW)	Dependable Generating Capacity (MW)
110-119	2	85	73	23	1
120-129	1	26	24	7	0
140-149	3	78	65	21	1
150-159	3	275	220	76	1
160-169	6	193	166	54	1
170-179	8	203	237	75	0
180-189	8	130	118	37	0
190-199	5	96	85	27	0
200-299	41	853	643	245	0
300-399	27	509	409	152	0
400-499	17	206	169	63	0
500-599	5	58	52	17	0
600-699	6	39	33	12	0
700-799	12	64	44	18	0
800-899	2	9	7	3	0
900-999	6	48	42	15	0
1000+	35	82	70	27	0
Total	189	3,203	2,439	873	5

Revelstoke / Ashcroft Transmission Region Run-of-River Hydro Potential

Price Bundle	Number of Projects	Average Annual Energy (GWh/yr)	Annual Firm Energy (GWh/yr)	Installed Capacity (MW)	Dependable Generating Capacity (MW)
90-94	1	87	51	17	1
100-109	4	176	155	48	1
110-119	1	232	219	69	3
120-129	4	243	231	70	0
130-139	4	154	141	43	1
140-149	8	254	234	74	1
150-159	7	182	169	52	0
160-169	3	72	72	19	1
170-179	4	54	42	14	0
180-189	15	84	82	25	0
190-199	6	205	189	58	0
200-299	64	1,037	868	315	2
300-399	40	328	251	95	0
400-499	22	128	100	36	0
500-599	18	83	69	26	0
600-699	7	15	11	4	0
700-799	11	33	23	11	0
800-899	10	33	25	10	0
900-999	2	6	5	2	0
1000+	54	100	74	25	0
Total	278	3,816	3,130	1,034	12

North Coast Transmission Region Run-of-River Hydro Potential

Price Bundle	Number of Projects	Average Annual Energy (GWh/yr)	Annual Firm Energy (GWh/yr)	Installed Capacity (MW)	Dependable Generating Capacity (MW)
75-79	1	79	60	18	0
80-89	1	77	64	18	0
90-99	1	171	142	47	0
100-109	3	159	120	42	0
120-129	3	205	163	56	0
130-139	7	499	395	130	0
140-149	6	244	195	65	0
150-159	3	138	109	34	0
160-169	9	482	356	122	0
170-179	8	254	207	70	0
180-189	9	218	176	58	0
190-199	74	428	356	120	0
200-299	82	2,470	2,070	678	1
300-399	104	2,215	1,810	616	0
400-499	93	1,517	1,243	425	0
500-599	78	971	792	276	0
600-699	80	729	627	204	0
700-799	66	678	541	183	0
800-899	64	742	582	211	0
900-999	46	375	298	110	0
1000+	2,264	6,929	5,364	2,138	2
Total	3,664	16,668	13,653	4,633	4

Vancouver Island Transmission Region Run-of-River Hydro Potential

Price Bundle	Number of Projects	Average Annual Energy (GWh/yr)	Annual Firm Energy (GWh/yr)	Installed Capacity (MW)	Dependable Generating Capacity (MW)
80-84	1	435	318	98	12
90-94	1	243	206	77	0
100-109	1	145	113	48	0
110-119	5	1,314	979	294	36
120-129	1	45	34	11	2
130-139	5	254	200	63	0
140-149	4	253	180	56	0
150-159	7	794	580	183	77
160-169	4	252	196	61	0
170-179	9	321	259	79	11
180-189	6	443	324	103	10
190-199	6	74	55	18	0
200-299	73	2,236	1,692	560	44
300-399	77	1,155	867	287	28
400-499	72	761	500	207	11
500-599	48	376	274	101	9
600-699	30	307	221	143	0
700-799	34	281	211	95	5
800-899	29	308	234	89	3
900-999	35	395	302	99	3
1000+	225	1,315	991	329	14
Total	683	12,264	8,171	3,052	253

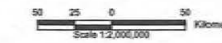
**Legend**

- Parks
- Transmission Region Boundary
- Major Road
- Transmission Line
- Foris BC Transmission Line
- Planned NTL Line

**Potential Power Projects**

- < \$100/MWh
- \$100 - \$150/MWh
- > \$150/MWh

< 1 MW  
 1 - 30 MW  
 > 30 MW



This map identifies approximately 7,300 potential run-of-river hydro power projects in B.C. These locations represent sites that could potentially be developed based on an inventory level assessment of available in-stream power resources. Sites within Provincial and National Parks and Protected Areas, identified salmon streams and in the vicinity of existing hydropower projects have been excluded. Actual development of the locations presented on this map would require site-level assessment including review of First Nations, environmental, social, economic and technical issues, as well as Government approvals.

**SOURCE MAP BACKGROUND LAYERS:**  
 Canadian Digital Elevation Data (NCEC), 1:250,000 with HydroMap  
 B.C. Watershed Atlas (B.C. Ministry of Environment)  
 B.C. Transmission System (B.C. Hydro)  
 Foris B.C. Transmission System (Foris B.C.)  
 Highways (MRCs)  
 Provincial Parks (BCOV LMB Crown Registry and Geographic Base Bands)  
 National Parks (NRCs)

**STATEMENT OF LIMITATIONS**  
 This document represents the professional judgment of the author based on the information available at the time of preparation and is not intended to be a guarantee of accuracy. The author assumes no liability for any errors or omissions in this document. The user of this document is advised to verify the accuracy of the information presented herein.

**DISCLAIMER NOTICE**  
 This work product (this Atlas and Report) is the property of BC Hydro. All rights reserved. No part of this work product may be reproduced or transmitted in any form or by any means, electronic or mechanical, including photocopying, recording, or by any information storage and retrieval system, without the prior written permission of BC Hydro.