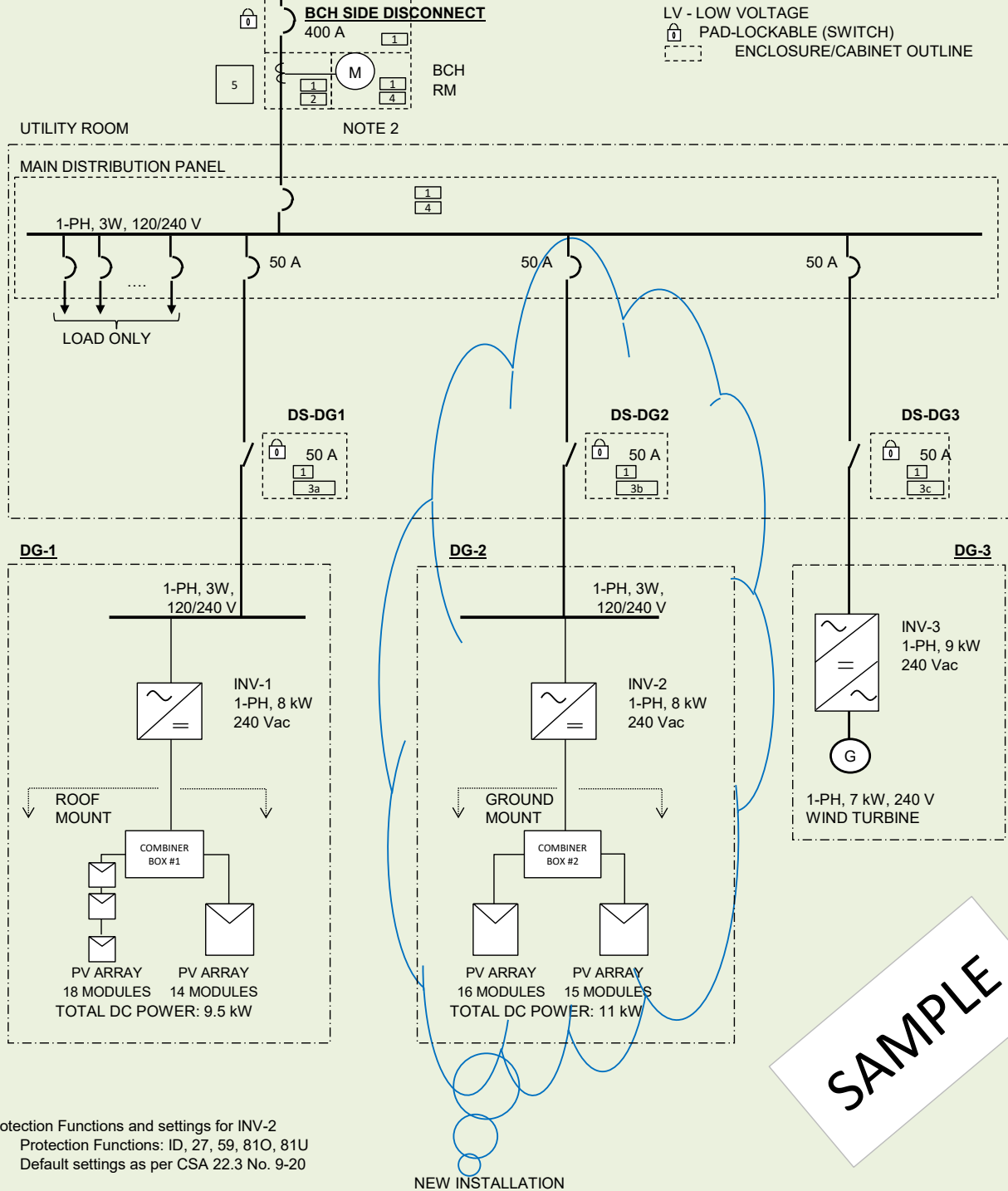


BC HYDRO SYSTEM: 1-PH, 3W, 120/240 V

**LEGEND**

- RM - REVENUE METER
- LV - LOW VOLTAGE
- PAD-LOCKABLE (SWITCH)
- ENCLOSURE/CABINET OUTLINE



SAMPLE

Protection Functions and settings for INV-2  
 Protection Functions: ID, 27, 59, 81O, 81U  
 Default settings as per CSA 22.3 No. 9-20

**NOTES**

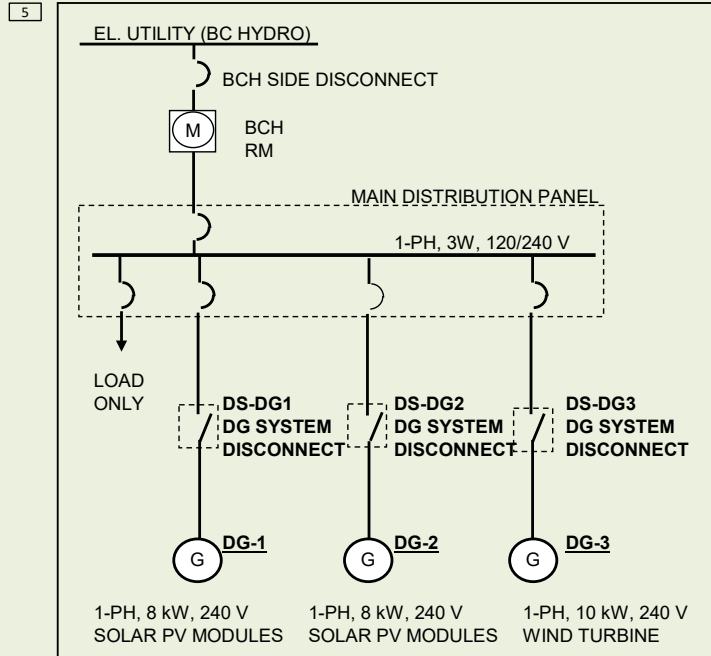
1. PERMANENT LABELS (LAMACOID OR SIMILAR) ARE TO BE INSTALLED AS PER THE LABEL SCHEDULE (SEE PAGE 2, THIS DRAWING).
2. BCHYDRO SIDE DISCONNECT AND THE LOAD SIDE DG DISCONNECT DEVICE(S) ARE UTILITY ACCESSIBLE AND LOCKABLE WITH A 8MM (5/16") SHANK PADLOCK

Rev #	Date	By	Issue	1-LINE DIAGRAM INVERTER BASED DISTRIBUTED GENERATORS DG-1, DG-2 AND DG-3 CONNECTED TO CUSTOMER FED FROM LV SERVICE	
				Location:	1234 Abcd Street, Xyz Town, BC, X#X #X#
				Dwg #:	1234-1
				Prepared by:	First Name Last Name
1	XX-XXX-XXXX	FL	Issued to BCH with NM DG application	Date:	xx-xxx-xxxx
				SHEET 1 OF 2	

**LABEL SCHEDULE**

- 1 **TWO POWER SOURCE, PARALLEL SYSTEM**
- 2 **DG ISOLATION VIA DG SYSTEM DISCONNECTS DS-DG1, DS-DG2 AND DS-DG3 LOCATED IN THE UTILITY ROOM**
- 3a **DG SYSTEM DISCONNECT DS-DG1**
- 3b **DG SYSTEM DISCONNECT DS-DG2**
- 3c **DG SYSTEM DISCONNECT DS-DG3**
- 4 **ELECTRICAL POWER SOURCES IN SERVICE:**
  - 1. EL. UTILITY (BC HYDRO)
  - 2. ROOFTOP PV SOLAR GENERATOR (DG-1)
  - 3. GROUND MOUNT PV SOLAR GENERATOR (DG-2)
  - 4. WIND GENERATOR (DG-3)

**SIMPLIFIED 1-LINE DIAGRAM**



**DISCLAIMER**

This drawing (Sheet #1 and 2) is provided for illustration purpose only to assist NM applicants in preparing Single Line Diagram (SLD). It is applicant's responsibility to present the accurate information on SLD as per the intended installation. BC Hydro (BCH) assume no responsibility or, professional liability about the content of SLD in any way.

The SLD is meant for the use of NM application approval process with BCH only and BCH may use SLD as a record drawing for any future reference, and, in no way the BCH approved SLD will form the part of construction package.

In case of any conflict between the interconnection guideline, DGTIR100, and this sample drawing, the decision from BCH prevails.

This sample SLD or, DGTIR100 is not meant to capture, inspect or, supersed any CSA/applicable standard and/or Local Safety Authority (LSA) requirements, therefore, it is applicant's obligation to meet the requirements of LSA.

SAMPLE

Rev #	Date	By	Issue	<b>1-LINE DIAGRAM INVERTER BASED DISTRIBUTED GENERATORS DG-1, DG-2 AND DG-3 CONNECTED TO CUSTOMER FED FROM LV SERVICE</b>	
				Location:	1234 Abcd Street, Xyz Town, BC, X#X #X#
				Dwg #:	1234-1
				Prepared by:	First Name Last Name
1	XX-XXX-XXXX	FL	Issued to BCH with NM DG application	Date	xx-xxx-xxxx
				SHEET 2 OF 2	