

Peace River Riparian Habitat Assessment

Mapping baseline vegetation along the Peace River

The Peace Water Use Plan Committee recommended a baseline assessment of the riparian (shoreline) vegetation along the Peace River. GMSWORKS-7 provided the baseline work for GSMON-6, Peace River Riparian Flooding monitoring study, to assess impacts on the riparian vegetation in the event of spillway operations at Peace Canyon Dam.



Questions We Wanted to Answer

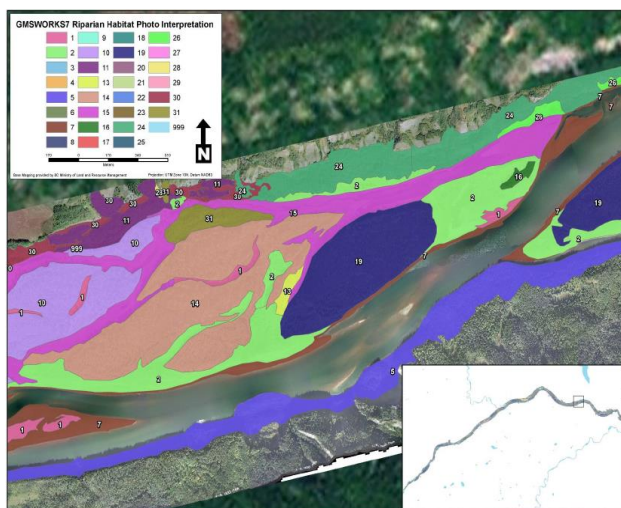
1. What is the present distribution, including species composition and spatial area of riparian vegetation along the Peace River?



Project Update

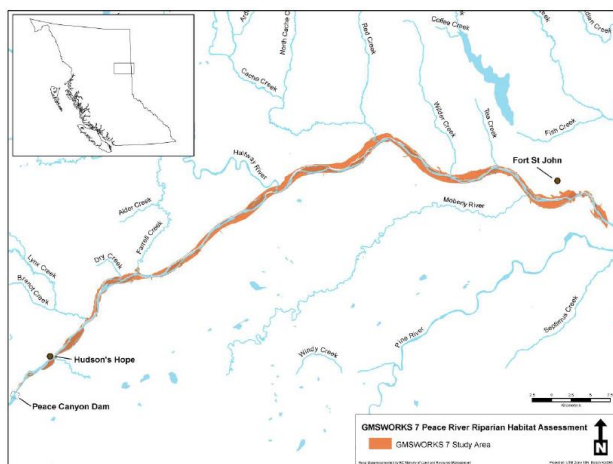
- The initial baseline was assessed in 2010 and 2011 through aerial photos and ground truthing surveys.
- 32 habitat types such as non-vegetated, shrub, forested and wetlands were created to classify riparian habitats in the study area.
- More than 6255 hectares of riparian habitats were classified in the study area.

Peace River Riparian Habitat Assessment



Lessons Learned

- There is some uncertainty involved in typing ecosystems from aerial photos.
- To address this uncertainty several items such as spruce and shrub species and dead-tree typing were identified for the ground-truthing component of the project.



GMSMON-6 Peace River study area

Key Findings and Next Steps

- Further work on this project has been suspended in acknowledgement of the development of the Site C hydroelectric project. Lessons learned will inform future monitoring studies undertaken by BC Hydro.