

Peace River Riparian Flooding Study

Monitoring riparian vegetation in flood prone areas of Peace River

The Peace Water Use Plan Committee recommended a study to determine the effects of high flow conditions associated with spillway operations as they relate to riparian (shoreline) vegetation in flood prone areas downstream from the Peace Canyon Dam.



July 2012 spillway operations at Peace Canyon Dam

Questions We Wanted to Answer

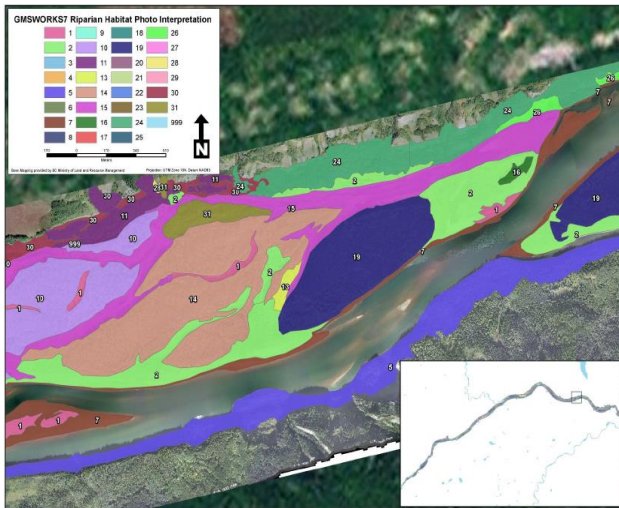
1. What are the effects of flood-level flows, caused by spillway operations, on the species composition, coverage and distribution of near-shore vegetation (riparian areas)?



Study Update

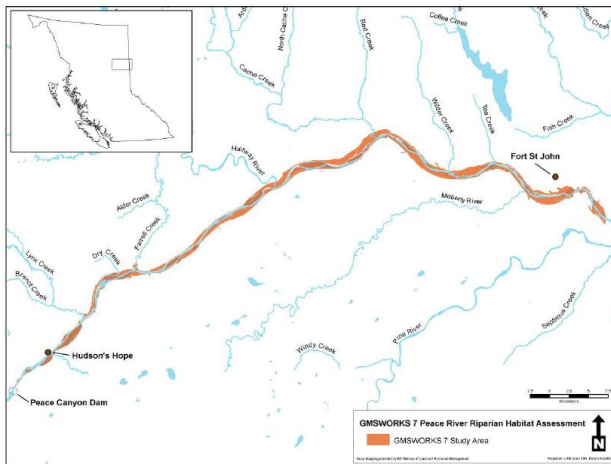
- Shoreline vegetation was assessed in 2010 – 2011 through a companion study (GMSWORKS-7). The baseline work used aerial photos and ground truthing surveys to describe and map the types of vegetation.
- A high flow event triggered a study in 2012. Aerial photos were collected in 2012 and again in 2013 for a lower flow comparison.
- Effects to shoreline vegetation was undetectable.

Peace River Riparian Flooding Study



Lessons Learned

- Future years of monitoring and data would be required to evaluate the effects of high flow conditions on shoreline vegetation.



GMSMON-6 Peace River study area

Key Findings and Next Steps

- Further work on this study has been suspended in acknowledgement of the ongoing development for the Site C hydroelectric project. Lessons learned will inform future monitoring studies undertaken by BC Hydro.