

Two vertical bars, one green and one blue, are positioned on the left side of the page.

## **Bridge River Project Water Use Plan**

### **Carpenter Reservoir and Middle Bridge River Fish Habitat and Population Monitoring**

**Implementation Year 7**

**Reference: BRGMON-04**

**Study Period: October 2018 to September 2019**

**Annika Putt, Daniel Ramos-Espinoza and Carson White**

**InStream Fisheries Research Inc.  
215 – 2323 Boundary Road  
Vancouver, BC  
V5M 4V8**

**March 1, 2020**

## Bridge-Seton Water Use Plan

Implementation Year 7 (October 2018-September 2019):

Carpenter Reservoir and Middle Bridge River Fish Habitat and  
Population Monitoring

Reference: BRGMON-4

Annika Putt, Dani Ramos-Espinoza, and Carson White

Prepared for: St'át'imc Eco-Resources

March 1 2020



## Executive Summary

The objectives of BRGMON-4 are to collect comprehensive information of the life history, biological characteristics, distribution, abundance, and composition of the fish community (with focus on Bull Trout, Rainbow Trout, kokanee, and Mountain Whitefish) in Carpenter Reservoir and the Middle Bridge River, and to assess the effects of reservoir elevations (i.e., BC Hydro operations) on fish populations. Monitoring in 2019 (Year 7 of the 10-year monitoring program) consisted of:

1. Mountain Whitefish angling in the Middle Bridge River to index spawner abundance and determine spawning timing;
2. Bull Trout movement monitoring using acoustic telemetry and PIT tag recapture data;
3. adult Bull Trout abundance estimation via a three-week mark-recapture program consisting of boat-based electroshocking and angling throughout the reservoir;
4. collection of length, weight, and age data for Bull Trout, Rainbow Trout, kokanee, and Mountain Whitefish during mark-recapture sampling activities; and
5. kokanee spawner enumeration surveys in Carpenter Reservoir tributaries.

BRGMON-4 will answer the following management questions using a weight of evidence approach:

*MQ1: What are the basic biological characteristics of fish populations in Carpenter Reservoir and Middle Bridge River?*

We collected length, weight, and age data from all fish captured during field sampling to develop comprehensive time series of biological characteristics. Biological data were used to determine temporal variability in body condition, create Age-Length-Keys (ALKs), and fit von Bertalanffy growth models for various species captured in Carpenter Reservoir and its tributaries. Preliminary results suggest fish species in Carpenter Reservoir grow slowly and reach lower maximum fork lengths relative to nearby systems, which is expected given that Carpenter Reservoir productivity is relatively low. We estimated Bull Trout abundance in Carpenter Reservoir (2016 through 2019) using CJS mark-recapture modelling. Preliminary results suggest Bull Trout populations may be declining, with abundance estimates ranging from 2,004 (95% CI: 660-6,086) in 2016 to 511 (95% CI: 139-1,872) in 2019. These biological metrics contribute to a comprehensive database describing Carpenter Reservoir fish species and can also be compared amongst scenarios to determine how reservoir management affects fish species in the reservoir and Middle Bridge River (see MQ3).

*MQ2: Will the selected alternative (N2-2P) result in positive, negative, or neutral impact on abundance and diversity of fish populations?*

It is challenging to determine whether N2-2P affected fish populations in Carpenter Reservoir given the highly variable nature of reservoir elevations, the time lag between operational decisions and population-level effects, and a lack of consistent historic fish population data. We compared average elevations in the first two weeks of April (a proxy for growing season productivity and similar to the timing of minimum elevation) and summer elevations (representing habitat volume) amongst pre-N2-2P (2002-2011), N2-2P (2012-2015), and Modified Operations (2016-2019). Our results suggest mean April elevations may have increased under N2-2P while mean summer elevations remained

virtually unchanged, but both have declined under Modified Operations. This indicates Carpenter Reservoir is experiencing a trend of declining growing season productivity and full pool habitat volume, which likely has a negative impact on the abundance and diversity of reservoir fish populations.

*MQ3: Which are the key operating parameters that contribute to reduced or improved productivity of fish populations in Carpenter Reservoir and the Middle Bridge River?*

Fish populations in Carpenter Reservoir may be affected by minimum and maximum reservoir elevation, and the timing and extent of reservoir filling and drawdown. Monitoring results from BRGMON-10 suggest low minimum elevations in the spring (as have occurred in 2017 through 2019) result in a later thermocline development, low growing season productivity, and reduced biomass of lacustrine invertebrates. In years with low minimum elevation, there is decreased food availability for all species, and invertebrate drift from the Middle Bridge River and other tributaries becomes more important to the reservoir food web.

There is preliminary evidence of negative effects of Modified Operations in 2016 through 2019 on fish populations; Bull Trout showed reduced movement, particularly into and out of the Middle Bridge River, and there was a temporary reduction in fish condition (a measure of fish health) for almost all species. Although BRGMON-4 sampling does not target kokanee, limiting our ability to make inferences, kokanee spawner counts may be declining in Carpenter Reservoir. We saw low kokanee spawner abundance in 2018 and no spawners in 2019. Kokanee may be declining in the reservoir due to low spring elevations and entrainment through Terzaghi Dam (as occurred in 2016 and 2017).

*MQ4: Is there a relationship between specific characteristics of in-stream flow in the Middle Bridge River that contribute to reduced or improved productivity of fish populations in Carpenter Reservoir and the Middle Bridge River?*

Consistently high turbidity in the Middle Bridge River makes it difficult to assess fish populations and determine the effects of reservoir operations; however, Kokanee and Mountain Whitefish spawning surveys and hatch date calculations suggest there is a low risk of direct egg dewatering from Lajoie Dam operations. Egg dewatering risk is likely low because stage heights remain relatively consistent and do not drop substantially throughout spawning and incubation periods (i.e., late summer to early February). The spawning and incubation success of these species may still be affected by the management of Lajoie Dam. The Middle Bridge River has more stable winter water temperatures relative to Carpenter Reservoir tributaries, and hatch dates are estimated to be earlier in the Middle Bridge River as a result. Also, the Middle Bridge River has relatively high levels of fine particulate matter in substrates, which can impact egg settling (Mountain Whitefish) and redd building (kokanee).

*MQ5: Can refinements be made to the operation of Carpenter Reservoir and management of in-stream flow releases from Lajoie Generating Station into the Middle Bridge River to improve protection or enhance fish population in both areas, or can existing constraints be relaxed?*

Preliminary evidence suggests that low summer elevations and low early spring elevations (similar to maximum and minimum elevations) may result in decreased reservoir productivity and overall habitat volume, which may be detrimental to fish populations in Carpenter Reservoir. Increasing reservoir elevations in the early spring (to promote increased reservoir productivity) and in the summer (to increase overall habitat volume and access to large tributary inflows) may therefore improve habitat conditions and fish productivity. Continued monitoring will help to determine whether operation of Carpenter Reservoir and Lajoie Dam can be adjusted to improve fish populations in the reservoir and in the river.

We recommend continued monitoring in 2020 to build upon data collected in years 1 through 7. Monitoring in 2020 will consist of, at minimum, acoustic monitoring of adult Bull Trout, Bull Trout abundance estimation via mark-recapture sampling, collection of length, weight, and age data for Bull Trout, Rainbow Trout, kokanee, and Mountain Whitefish, and kokanee spawning surveys.

## **Acknowledgements**

We would like to thank St'at'imc Eco Resources (SER) staff for administrative support for this project. Ron James was the lead technician for the project in 2019, and Kelsey Alec, Chris Bobb, and Fraser Adolf also assisted with fieldwork. We would also like to thank Jeff Sneeep for valuable project input and for the use of his boat and time, as well as all InStream Fisheries Staff for help with project design, implementation, analysis, and synthesis. BC Hydro provided all project funding.

## Status of BRGMON-4 objectives and management questions (2019, year 7)

Study Objectives	Management Questions	Management Question Status
1: Collect comprehensive information on the life history, biological characteristics, distribution, abundance, and composition of the fish community in Carpenter Reservoir and Middle Bridge River.	1: What are the basic biological characteristics of parameters of fish populations in Carpenter Reservoir and Middle Bridge River?	<p>A database of biological characteristics has been developed for key fish species of interest in the reservoir and Middle Bridge River (Bull Trout, Rainbow Trout, Mountain Whitefish, and kokanee; Bridgelip Suckers, Coastrange Sculpin, and Redside Shiners are also present but not targeted by BRGMON 4). Biological metrics being collected include length, weight, condition, age, relative species density, relative abundance, spawn timing and location, and habitat use. These metrics are used to create length-weight, fish condition, and length-at age models to better understanding fish population characteristics.</p> <p>Bull Trout is the top predator in Carpenter Reservoir, and Mountain Whitefish are likely the most populous forage fish species. Rainbow Trout are present in low numbers, and several tributaries (e.g., Marshall Creek, Macdonald Creek) have resident populations of Rainbow Trout that likely contribute to the reservoir population. Kokanee abundance has declined substantially over the course of the monitor, likely due to a reduction in lacustrine habitat volume resulting from Modified Operations in 2016 through 2019.</p> <p>Preliminary evidence suggests fish grow slowly in Carpenter Reservoir and reach shorter maximum lengths relative to nearby systems. This finding is expected given that Carpenter Reservoir is a relatively low productivity system. In addition, all target species are stream spawners and access to abundant suitable spawning habitat is limited in the steep, small tributaries that feed into the reservoir.</p>

2: Provide information required to link the effects of reservoir operation on fish populations.	2: Will the selected alternative (N2-2P) result in positive, negative, or neutral impact on abundance and diversity of fish populations?	Weight of evidence suggests reservoir productivity and full pool habitat volume has declined following the implementation of N2-2P (according to mean early spring and late summer elevations). Reservoir productivity remained similar between pre- and post-N2-2P but declined under Modified Operations (2016-2019), and full pool habitat volume declined slightly under N2-2P and more substantially under Modified Operations. This trend of declining productivity and habitat volume may negatively affect abundance and diversity of fish populations in the reservoir, evidence of which has been observed during this monitor (see MQ3 and MQ4).
	3: Which are the key operating parameters that contribute to reduced or improved productivity of fish populations in Carpenter Reservoir and Middle Bridge River?	Reservoir elevations have been highly variable throughout BRGMON-4, and variable elevations may have resulted in changes in the biological characteristics of fish populations in the reservoir. Low elevations in the spring result in shorter water residence times and higher turbidity, leading to reduced growing season productivity and a decline in food availability for all species. Low reservoir elevation in the spring and summer also restricts the quantity and quality of fish habitat, which may negatively affect fish abundance and productivity. It is challenging to identify specific factors affecting fish populations due to the complex nature of the reservoir and river ecosystems and the long lifespan of fish species.
	4: Is there a relationship between specific characteristics of the in-stream flow in the Middle Bridge River that contribute to reduced or improved productivity of fish populations in Carpenter Reservoir and the Middle Bridge River?	Mountain Whitefish spawner surveys and hatch date calculations paired with winter Middle Bridge River stage heights suggest flow release schedules at Lajoie Dam do not result in significant dewatering of Mountain Whitefish eggs or kokanee and Bull Trout redds in the river. Middle Bridge River flow and temperature have the potential to affect fish productivity in the river, and we will continue to investigate these processes using a weight of evidence approach. Operations of Lajoie Dam also affect reservoir fish productivity due to their effect on reservoir elevations, which is considered by Management Question 3.



---

5: Can refinements be made to the operation of Carpenter Reservoir and management of in-stream flow releases from Lajoie Generating Station into the Middle Bridge River to improve protection or enhance fish populations in both of these areas, or can existing constraints be relaxed?

Preliminary results of BRGMON-4 and results from BRGMON-10 suggest that both minimum and maximum reservoir elevations affect fish habitat in the reservoir and, therefore, refinements to operations that increase both minimum and maximum elevations may improve fish populations. Although the effect of Lajoie Dam discharges on spawning habitat in the Middle Bridge River remains uncertain (and will not likely be addressed by BRGMON-4), the risk of direct egg mortality from stage decreases appears to be low due to a relatively consistent Lajoie flow regime during critical incubation and rearing periods. Refinements to management scenarios will be explored in the final years of BRGMON-4 based on the answers to Management Questions 1 through 4.

---

## Table of Contents

1	Introduction .....	12
1.1	Background.....	12
1.2	Previous Research in Carpenter Reservoir and the Middle Bridge River.....	13
1.3	Management Questions .....	14
2	Methods .....	15
2.1	Study Site .....	15
2.2	Carpenter Reservoir Operating Parameters .....	16
2.3	Middle Bridge River Mountain Whitefish Spawning Assessment.....	16
2.4	Bull Trout Abundance .....	17
2.4.1	Mark-Recapture Field Program .....	18
2.4.2	Mark-Recapture Modelling.....	18
2.5	Bull Trout Movement Analysis .....	20
2.5.1	Bull Trout Acoustic Tagging.....	20
2.5.2	Acoustic Receivers .....	21
2.5.3	Movement of PIT-tagged Bull Trout .....	24
2.6	Analysis of Shoreline Electroshocking CPUE.....	24
2.7	Analysis of Biological Data .....	24
2.7.1	Ageing Analysis .....	24
2.7.2	Length vs Weight and Body Condition.....	25
2.7.3	Von Bertalanffy Growth Model .....	26
2.7.4	Age-Length Keys .....	26
2.8	Reservoir Tributaries and Middle Bridge River Spawner Assessments .....	27
2.8.1	Tributary Visual Surveys.....	27
3	Results .....	27
3.1	Carpenter Reservoir Operating Parameters .....	27
3.2	Middle Bridge River Mountain Whitefish Spawning Assessment.....	30
3.3	Bull Trout Abundance Estimation.....	33
3.3.1	Mark-Recapture Modelling.....	37
3.4	Bull Trout Movement Analysis .....	38

3.4.1	Characteristics of Acoustic-Tagged Fish .....	38
3.4.2	Movement of Tagged Bull Trout.....	38
3.4.3	Movement of PIT-Tagged Bull Trout.....	42
3.5	Shoreline Electroshocking in Carpenter Reservoir.....	43
3.6	Biological Characteristics.....	45
3.6.1	Bull Trout.....	46
3.6.2	Rainbow Trout.....	48
3.6.3	Mountain Whitefish.....	50
3.6.4	Kokanee .....	52
3.7	Tributary Surveys in the Carpenter Reservoir Watershed.....	53
3.7.1	Kokanee spawner assessments .....	53
3.7.2	Tributary Electroshocking Assessment in Carpenter Reservoir Tributaries .....	56
3.7.2.1	Rainbow Trout Growth .....	57
4	Discussion .....	58
4.1	Carpenter Reservoir Operating Parameters .....	58
4.2	BRGMON-4 Management Questions.....	59
4.2.1	Management Question 1: What are the basic biological characteristics of parameters of fish populations in Carpenter Reservoir and Middle Bridge River?.....	59
4.2.2	Management Question 2: Will the selected alternative result in positive, negative, or neutral impact on abundance and diversity of fish populations?.....	61
4.2.3	Management Question 3: Which are the key operating parameters that contribute to reduced or improved productivity of fish populations in Carpenter Reservoir and Middle Bridge River? .....	62
4.2.4	Management Question 4: Is there a relationship between specific characteristics of the in-stream flow in the Middle Bridge River that contribute to reduced or improved productivity of fish populations in Carpenter Reservoir and the Middle Bridge River? .....	64
4.2.5	Management Question 5: Can refinements be made to the operation of Carpenter Reservoir and management of in-stream flow releases from Lajoie Generating Station into the Middle Bridge River to improve protection or enhance fish populations in both of these areas, or can existing constraints be relaxed? .....	65
4.2.6	Conclusions and Recommendations.....	66
5	References.....	66
	Appendix A .....	72

Appendix B .....	74
------------------	----

# 1 Introduction

## 1.1 Background

The Bridge River power project, in the Bridge River Valley of southwestern British Columbia (Figure 1-1), was initiated in the 1920s and completed in 1960 with the construction of Terzaghi Dam (BC Hydro 2014). Terzaghi Dam impounded ~50 km of the Bridge River valley and created Carpenter Reservoir, the primary reservoir for power generation at the Shalalth powerhouse. Two tunnels, Bridge 1 and Bridge 2, carry water through Mission Mountain to Shalalth for power generation, before discharging Bridge River water into Seton Lake and subsequently the Fraser River. A second dam upstream of Carpenter Reservoir, Lajoie Dam, impounds the upper Bridge River as Downton Reservoir and regulates flows in the Middle Bridge River between Lajoie Dam and Carpenter Reservoir.

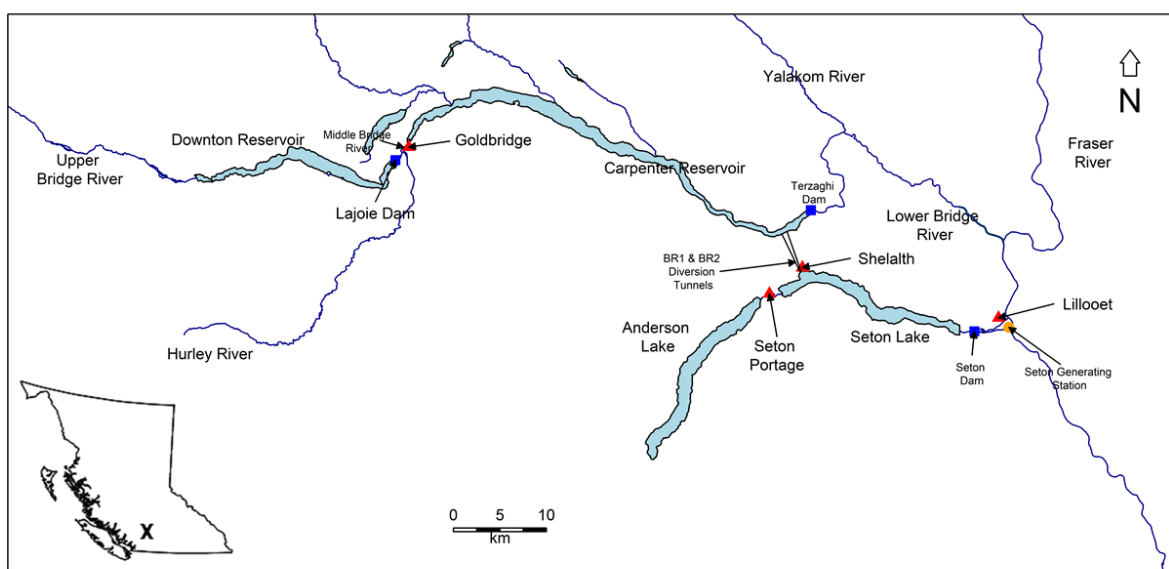
The Bridge River Valley is an important cultural and sustaining resource for the St'át'imc First Nation, and a Water Use Planning (WUP) process was initiated in 1999 in response to environmental and social concerns resulting from power generation. The initial WUP process, completed in 2001, outlined 20 proposed alternative operating strategies, which were reviewed by the Bridge River Consultative Committee (BRCC; a multi-stakeholder body). The BRCC provided recommendations to BC Hydro, and a final WUP was accepted in 2011 that implemented an alternative operating strategy (N2-2P) aimed to balance fish and wildlife health, recreation, flood management, water security, and power generation (BC Hydro 2011). The WUP recommended monitoring to address uncertainties and investigate environmental changes in response to N2-2P (BC Hydro 2011). Recommendations to monitor fish and fish habitat in Carpenter Reservoir and the Middle Bridge River led to the development of BRGMON-4 (BC Hydro 2015).

N2-2P did not include substantial changes to the operating guidelines for Carpenter Reservoir. Minimum and maximum reservoir elevation objectives remained at 606.55 m and 651.08 m, respectively. A soft maximum elevation target of 648 m was adopted for the reservoir at the end of the snowmelt season in mid-August; however, it was expected this target would be exceeded due to other higher priority constraints (BC Hydro 2011). N2-2P included new operational guidelines for discharge from Lajoie Generating Station into the Middle Bridge River, which aimed to balance fish habitat in the Middle Bridge River and Downton Reservoir. A minimum flow schedule was developed relating discharge to elevations at the upstream Downton Reservoir (with a minimum discharge of  $5.7 \text{ m}^3 \text{ s}^{-1}$ ), and maximum ramping rates of  $2.5 \text{ cm hr}^{-1}$  and  $15 \text{ cm day}^{-1}$  were recommended to reduce the likelihood of fish stranding.

The extent to which N2-2P was expected to affect fish species in Carpenter Reservoir and the Middle Bridge River is unclear. The WUP stated that “for Carpenter Lake reservoir, the proposed conditions in [the] Water Use Plan are not expected to impact fish or fish habitat” (BC Hydro 2011). In contrast, an explicit objective of the BRCC during the WUP review was to maximize abundance and diversity of fish in all parts of the power system, and expected outcomes included improvements in Mountain Whitefish (*Prosopium williamsoni*) egg survival in the Middle Bridge River, and a 30% improvement in the fisheries indices of abundance in Carpenter Reservoir (BRCC 2003). Although these

expectations were not explicit in the final BRCC report, it appears N2-2P was expected to benefit fish populations in both the Middle Bridge River and Carpenter Reservoir.

Beginning in 2016, Bridge River hydroelectric operations were modified due to safety concerns at Lajoie Dam and repair requirements at Bridge 1 and 2 generating stations (i.e., the Modified Operations scenario). High flows from Terzaghi Dam into the Lower Bridge River were required to draft Downton Reservoir to a modified maximum elevation (734 m) due to safety concerns at Lajoie Dam. To remove water from Downton and Carpenter Reservoirs, lower Bridge River discharges surpassed 15 m<sup>3</sup>/s (the maximum flow treatment prescribed during the WUP) and peaked at 97-127 m<sup>3</sup>/s in 2016 through 2018. Modified Operations dramatically changed habitat in the lower Bridge River and Downton Reservoir, and affected elevations in Carpenter Reservoir. Particularly from 2017 to 2019, minimum spring elevations were low in the reservoir relative to previous years, likely resulting in decreased water volume, decreased primary productivity, and reduced habitat availability (as inferred from productivity modelling in Limnotek 2018).



**Figure 1-1 Bridge River power system near Lillooet, British Columbia.**

## **1.2 Previous Research in Carpenter Reservoir and the Middle Bridge River**

There have been several preliminary investigations into Carpenter Reservoir fish populations and reservoir productivity (Appendix A). A fish habitat assessment was completed in 1995 and 1996, which included the identification and assessment of stream spawning habitat and pelagic fish indexing using gillnet surveys (Griffith 1999). Rainbow Trout (*Oncorhynchus mykiss*) and Bull Trout (*Salvelinus confluentus*) catches were low in Carpenter Reservoir tributaries, and habitat surveys suggested there were limited stream-lengths accessible to fish (due to steep gradients and barriers to passage), limited spawning substrate in streams, and lack of cover in streams that were heavily affected by reservoir drawdown. Gillnetting near the Bridge 1 and Bridge 2 diversion tunnels in the eastern pelagic portion of Carpenter Reservoir (bottom and mid-water depths) yielded high catches

of Rainbow and Bull Trout, and low catches of kokanee (*Onchorhynchus nerka*). Results suggested Rainbow and Bull Trout were less reliant on pelagic habitat than kokanee, and occupy western (i.e., more fluvial) portions of the reservoir during low pool conditions.

In 1999 and 2000, Chamberlain et al. (2001) examined the impacts of hydro operations on Bull Trout and kokanee migrations, life history expression, and critical life history stages using radio telemetry (Bull Trout) and tributary spawner surveys (Kokanee). Radio telemetry indicated that Bull Trout migrate into the western portion of the reservoir as it reaches full pool in the summer and occupy the eastern portion during winter (Chamberlain et al. 2001). No kokanee were observed in the 11 tributaries surveys, and only two kokanee carcasses were observed (in Gun Creek).

Several limnological surveys in Carpenter Reservoir have found low densities of zooplankton and phytoplankton, possibly due to a short water residence time in the reservoir (Perrin and Macdonald 1997; Griffith 1999, Limnotek 2018). These limnological findings agree with stable isotope research completed in 2001 that examined energetic food webs in the reservoir (Leslie 2003). Stable isotope samples were collected from the reservoir, the Middle Bridge River, and reservoir tributaries. Isotope signatures in fish throughout the Carpenter Reservoir watershed most resembled reservoir chironomidae and Middle Bridge River macroinvertebrate drift, rather than zooplankton or macroinvertebrate drift from smaller tributary sources. Carbon signatures in reservoir chironomidae and Middle Bridge River macroinvertebrate drift were indistinguishable, and it was not possible to determine which of the two energy sources most influenced fish productivity.

Much of the historic sampling in Carpenter Reservoir and the Middle Bridge River was completed in the early 2000s during the development of the WUP monitors (see Appendix A). This preliminary research highlighted uncertainties in biological and physical characteristics and the effects of BC Hydro operations on fish productivity in Carpenter Reservoir, and BRGMON-4 was developed to address these uncertainties.

### 1.3 Management Questions

The objective of BRGMON-4 is to determine whether operating parameters for Carpenter Reservoir (i.e., maximum and minimum elevation, and rates of filling and drawdown) and Lajoie Generating Station (i.e., in-stream flow releases and subsequent Middle Bridge River stage heights) affect fish populations in Carpenter Reservoir and the Middle Bridge River. This monitor will inform whether reservoir management can be refined to reduce negative impacts or enhance reservoir fish populations. Specifically, BRGMON-4 addresses five management questions (BC Hydro 2012):

1. What are the basic biological characteristics of fish populations in Carpenter Reservoir and its tributaries?
2. Will the selected alternative (N2-2P) operation result in positive, negative, or neutral impact on abundance and diversity of fish populations?
3. Which are the key operating parameters that contribute to reduced or improved productivity of fish populations in Carpenter Reservoir and Middle Bridge River?
4. Is there a relationship between specific characteristics of the in-stream flow in the Middle Bridge River that contributes to reduced or improved productivity of fish populations in Carpenter Reservoir and Middle Bridge River?

5. Can refinements be made to the operation of Carpenter Reservoir and management of in-stream flow releases from Lajoie Generating Station into the Middle Bridge River to improve protection or enhance fish populations in both areas, or can existing constraints be relaxed?

BGRMON-4 is the first long-term research study to take place in Carpenter Reservoir. The terms of reference (TOR) provided initial hypotheses and methods towards answering the management questions, but the TOR was modified considering insights from 2012 to 2014 (see details in Putt et al. 2016a). The TOR was amended in March 2015 to include revised hypotheses and modifications to the original methodologies (BC Hydro 2015); however, these revised hypotheses were later deemed unsuitable and were removed from project planning and reporting. The current approach aims to answer the management questions without the use of formal hypotheses, and will focus on Bull Trout, kokanee, Rainbow Trout and Mountain Whitefish.

## 2 Methods

### 2.1 Study Site

Carpenter Reservoir is located 40 km upstream of the confluence of the Bridge and Fraser Rivers and is bound to the west by the Middle Bridge River and Lajoie Dam and to the east by Terzaghi Dam (Figure 1-1). Native fish in Carpenter Reservoir include Bull Trout, Rainbow Trout, Mountain Whitefish, Redside Shiner (*Richardsonius balteatus*), Bridgelip Sucker (*Catostomus columbianus*), and Coastrange sculpin (*Cottus aleuticus*). In the 1970s and 1990s, kokanee (a non-native species) were stocked in Carpenter Reservoir by the Province of British Columbia and are still present today (Chamberlain et al. 2001, M. Casselman, pers comm., August 2020).

Carpenter Reservoir elevation is controlled by BC Hydro and changes substantially during annual cycles in the reservoir. At low pool (generally April), the boundary of the Middle Bridge River and Carpenter Reservoir moves eastward and the volume of Carpenter Reservoir decreases. As the reservoir fills in the spring, the boundary of the river and reservoir moves westward and reservoir length and volume increase. At full pool, generally reached in the late summer, the reservoir is ~50 km long and 1 km wide with a total surface area of 4,620 ha (Perrin and Macdonald 1997). The maximum depth at full pool is 55 m in the lacustrine portion adjacent to Terzaghi Dam.

Carpenter Reservoir becomes thermally stratified when approaching full pool (i.e., late June or early July) and achieves fall turnover by mid to late October. Thermal stratification is more pronounced in the eastern, lacustrine portion of the reservoir and lessens closer to the boundary of Carpenter Reservoir and the Middle Bridge River. Cold, turbid waters flow into the reservoir via the Middle Bridge River and sink to create a dense, turbid layer along the reservoir bottom (Limnotek 2018). Primary productivity is relatively low in Carpenter Reservoir due to high turbidity and short water residence times, and productivity is generally concentrated in warm, clear surface water. During extreme reservoir drawdowns, lacustrine habitat quality and quantity decrease, the length of the Middle Bridge River increases, and growing season productivity decreases (Limnotek 2018).

There are approximately 20 major tributary inflows to Carpenter Reservoir, but five sub-basins contribute to the majority (85%) of the catchment area (Perrin and Macdonald 1997). The main



drainages are the upper Bridge River (i.e., Downton Lake and the Middle Bridge River), the Hurley River, Tyaughton Lake, Marshall Lake, and Gun Lake. The largest tributaries drain upstream lakes, while numerous smaller tributaries drain snowfields and steep mountainous terrain.

## **2.2 Carpenter Reservoir Operating Parameters**

BC Hydro continuously monitors operating parameters in the Bridge River Power System; the operating parameters most applicable to BRGMON-4 are Carpenter Reservoir elevation and in-stream flow releases at Lajoie Dam. Carpenter Reservoir elevations can be summarized as daily elevations, annual maxima and minima, and rates of reservoir filling and drawdown (rate of change in elevation). In-stream flow releases from Lajoie Dam affect stage height and flows in the Middle Bridge River, which subsequently influence reservoir elevation.

We focus on average daily reservoir elevation and in-stream flow releases from Lajoie Dam to qualitatively examine changes in operating parameters between monitor years and answer the BRGMON-4 management questions. We determined minimum and maximum elevations for all monitor years as well as the timing and rate of filling and drawdown and compared these parameters with observations of fish populations. We also obtained historic Carpenter Reservoir elevation data from 1954 to present to determine how operating parameters have changed since the construction of Terzaghi Dam.

We statistically compared Carpenter Reservoir elevations for the 10 years prior to N2-2P (i.e., pre-WUP; 2002-2011), from 2012 to 2015 (i.e., post-WUP/N2-2P) and from 2016 to 2019 (i.e., Modified Operations) to determine changes attributed to implementation of N2-2P. There is no defined pre-WUP period. We selected 10 years, the total length of BRGMON-4 monitoring, to represent a relevant management regime prior to the WUP implementation. Two elevation parameters that were compared: mean elevation from July through September, representing full pool habitat volume, and mean elevation for the first two weeks of April, a period correlated with annual growing season productivity in the reservoir (Limnotek 2018). Adequate habitat volume and reservoir productivity are important for fish growth and productivity, and changes in these parameters across periods would suggest that operations are affecting fish populations.

## **2.3 Middle Bridge River Mountain Whitefish Spawning Assessment**

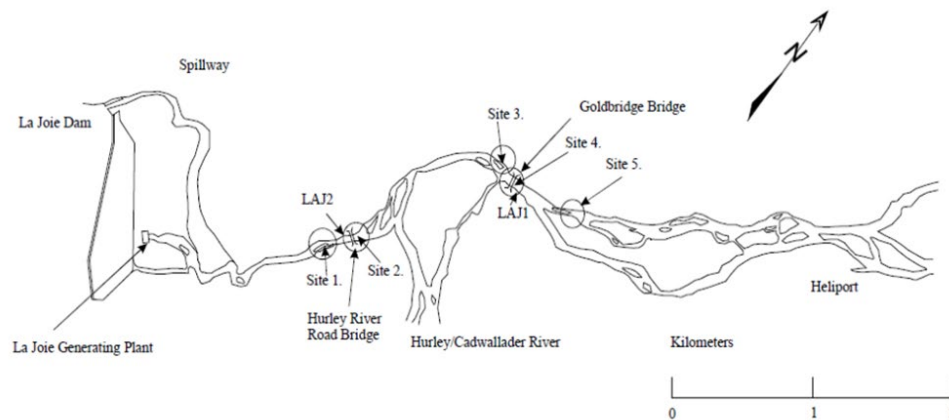
Mountain Whitefish spawn in the Middle Bridge River from mid-November to late-December and peak hatching occurs in early- to mid-February (Tisdale 2010, McPhail 2007). Mountain Whitefish are broadcast spawners and their eggs settle into interstitial spaces in small cobble. Incubating eggs or newly hatched individuals could be desiccated and killed if a ramp-down of Lajoie Dam causes water levels to drop in the Middle Bridge River in the winter and early spring. Determining incubation timing and 50% hatch dates (calculated using accumulated thermal units, ATU) is important for predicting when Mountain Whitefish are vulnerable to dewatering.

Mountain Whitefish spawning in the Middle Bridge River was assessed in 2018 (Year 7) as in 2016 (Year 5) using angling surveys modelled after those performed by Tisdale Environmental Consultants Inc. (TEC) in 2005, 2009, 2012, and 2013 (Tisdale 2010, 2013). Angling occurred in

November and December to identify the timing of peak female ripeness and the mean age of spawners. Mountain Whitefish were angled weekly from October 26 to December 6, 2018 using single cured salmon eggs. We angled at all five sites shown in Figure 2-1, but focused primarily on Sites 2 and 4 to maximize captures (relatively few fish were caught at the other three sites). All Mountain Whitefish captured were assessed for weight, fork length, age (via scale ageing analysis), sex (if possible), and sexual maturity. Sexual maturity was separated into three categories:

1. Not Ripe: No eggs or milt expelled via hand extraction.
2. Ripe: Eggs or milt expelled via hand extraction.
3. Spawned: Fish showed spawning characteristics, but abdomen was loose and little to no eggs or milt were expelled via hand extraction.

The number of Mountain Whitefish, the proportion of ripe females, and combined weekly egg counts were compared to data from 2009, 2012, 2013, and 2016 (Tisdale 2010, Putt et al. 2018). We did not assess the sex of immature fish and therefore proportions of ripe females are relative to all Mountain Whitefish sampled in a survey. To determine when incubating eggs and newly hatched Mountain Whitefish are vulnerable to desiccation, Middle Bridge River temperature data were used to calculate 50% hatch dates for eggs laid in 2018 using an ATU requirement of 327. We used 327 ATUs (from the lower Columbia River) because water temperatures in the Middle Bridge River are similar to those reported in the Columbia River during Mountain Whitefish egg incubation (R.L. & L 2001) and for consistency with ATU analysis by TEC (Tisdale 2010).



**Figure 2-1 Location of Mountain Whitefish sampling sites on the Middle Bridge River identified by Tisdale Environmental Consultants Inc (Source: Figure 2 from Tisdale 2013).**

## 2.4 Bull Trout Abundance

An open mark-recapture model was used in 2015 through 2019 to estimate annual Bull Trout abundance in Carpenter Reservoir. Open mark-recapture models account for fish movement into and out of the monitoring area via births, deaths, immigration, and emigration. Fish are captured annually and marked with a unique identifier (passive integrated transponder [PIT] tag). During subsequent sampling events, marked animals are recorded and released, and unmarked animals are tagged and

released. The relative proportions of marked to unmarked fish are used in mark-recapture modelling to determine survival and capture probabilities and estimate population size for each sampling event.

#### 2.4.1 Mark-Recapture Field Program

The 2019 mark-recapture period occurred between June 17 and July 5. In 2015 and 2016, the mark-recapture program occurred later in July (at maximum reservoir elevation), but acoustic data indicated that Bull Trout undergo spawning migrations in July (Putt et al. 2019), and surface water temperatures exceeded Bull Trout tolerances. We moved the program ~1-month earlier to avoid the spawning migration and reduce the potential for temperature-related handling stress, while still ensuring a high volume of reservoir habitat.

Multiple capture methods (angling at creek mouths and shoreline overnight electrofishing) were used to target all habitat types and allow the abundance estimate to be applied to the entire study area (i.e., Carpenter Reservoir). Short-set gill netting was not used as a capture method in 2019 because catch rates were negligible in previous years and we wanted to focus effort on maximizing Bull Trout captures. All Bull Trout were PIT tagged and released at their capture location, and we collected lengths, weights, and age structures (pectoral fins). Biological data and age structures were also collected from by-catch species (Rainbow Trout, Mountain Whitefish, and kokanee) to calculate catch-per-unit-effort (CPUE) and build on existing length, weight, and age databases.

It should be noted that the methods used and timing of the mark-recapture program make it difficult to sample Mountain Whitefish and kokanee in the reservoir (i.e., there are too many Mountain Whitefish shocked to produce an accurate index count, and kokanee are not typically present at tributary confluences in mid- to late-June). Pilot gillnetting in 2015 and 2016 was unsuccessful at efficiently capturing Mountain Whitefish and kokanee, and as a result, we have very little data for these two species in the reservoir. Both Mountain Whitefish and kokanee are targeted as adult spawners, during Middle Bridge River angling and tributary visual surveys, respectively.

CPUE (fish captured per hour of sampling) was calculated for all species and gear types using the equation:

$$CPUE_{ij} = \frac{Catch_{ij}}{Time(hours)} \quad \text{Eq 1}$$

for species  $i$  using gear  $j$ .

#### 2.4.2 Mark-Recapture Modelling

We used the Cormack Jolly-Seber (CJS) open-mark recapture model to estimate Bull Trout abundance in Carpenter Reservoir from 2015 to 2019 (Seber 1982, Pollock et al. 1990, Schwarz and Arnason 1996). There are several assumptions associated with open mark-recapture models that must be met to ensure the model produces reliable estimates, and we adapted sampling methodologies where necessary to meet these assumptions (Table 2.1).

In open mark-recapture models, the probability of a fish being captured in a sampling event is determined by two parameters: the apparent survival ( $\phi$ ) from sampling period  $i$  to  $i+1$  and the

capture probability ( $p$ ) within the  $i^{\text{th}}$  sampling event. The survival parameter is referred to as “apparent survival”, as it includes both mortality and emigration (Schwarz and Arnason 1996). Similarly, the probability of entrance accounts for individuals that are recruiting from the population as well as new immigrants to the study area.

Survival and capture probabilities are used to build probability expressions for each of the possible encounter histories over the  $K$  capture occasions. Maximum likelihood estimation is then used to derive estimates of apparent survival and capture probability for the population (see details in Cooch and White 2006). The model can be time-dependent (i.e., survival and capture probabilities are estimated for each sampling event) or parameters can be fixed across periods. In the CJS model, the apparent survival and capture probabilities are only modelled for marked fish, and the total number of fish in the population ( $N$ ) at sampling event  $i$  is not directly estimated. Instead, abundance and the standard error of abundance are calculated using estimated capture probabilities:

$$\hat{N}_i = \frac{n_i}{\hat{p}_i} \quad \text{Eq 2}$$

$$se(\hat{N}_i) = \frac{n_i(se[p_i])}{p_i^2} \quad \text{Eq 3}$$

where  $n_i$  is the total number of fish (marked and unmarked) captured in period  $i$  and  $\hat{p}_i$  is the estimated recapture probability for period  $i$  (Davidson and Armstrong 2002).  $N$  cannot be estimated for the first year because there is no recapture probability ( $p$ ) estimated for the first sampling event.

AICc model selection (small sample sizes, Burnham and Anderson 2002) was used to evaluate candidate models that included both fixed and time-varying survival ( $\phi$ ) and capture probability ( $p$ ). In AICc selection, the model with the highest AICc support (i.e., the lowest AICc values) is generally selected as the top model; however, in mark-recapture modelling it is typical to have similar AICc support for multiple models. We used model averaging to estimate survival and capture probabilities using AICc model weights. Confidence intervals for the model-averaged estimates were derived using the Delta-method, or the error propagation method (Cooch and White 2006). The Delta method calculates the linear approximation of each single model variance and combines these approximations to estimate variance for the model-averaged variables.

We used the model-averaged capture probabilities to generate abundance estimates using Equation 2. We then calculated log-normal confidence intervals for the abundance estimates (commonly used in distance abundance sampling; Thomas et al. 2002, Elwen et al. 2009):

$$LnVar = \ln\left(1 + \frac{var\hat{N}}{\hat{N}^2}\right) \quad \text{Eq 4}$$

$$r = \exp(1.96 * \sqrt{LnVar}) \quad \text{Eq 5}$$

$$UCL = \hat{N} * r \quad \text{Eq 6}$$

$$LCL = \hat{N}/r \quad \text{Eq 7}$$

where  $\hat{N}$  is the model-averaged abundance,  $var\hat{N}$  is the variance of the estimated abundance,  $UCL$  is the upper 95% confidence interval, and  $LCL$  is the lower 95% confidence interval.

All mark-recapture models were evaluated in R Project Software (R Core Development Team 2017) using the packages RMark (Laake 2013), which provides an interface between R and the mark-recapture software MARK (White and Burnham 1999).

**Table 2.1 Assumptions of the Cormack Jolly-Seber open mark-recapture models**

Assumption	Applicability to BRGMON-4 Bull Trout Mark Recapture
Each animal in the population at the time of the $i$ th sample has equal capture probability ( $p_i$ )	Violated if limited age classes or habitats are sampled, animals do not evenly distribute, or animals immigrate or emigrate from the study area during the mark-recapture period. We used multiple capture methods, and acoustic telemetry to assess immigration and movement during the mark-recapture period.
Each marked animal present following the $i$ th sampling event has equal survival probability ( $\phi_i$ ) until the $(i+1)$ th event	Proper fish handling techniques were used, marks were applied to healthy individuals without outwards signs of disease or injury, and all individuals were held until completely recovered.
Marks are not lost or missed	Fish were scanned for PIT tags and examined for other signs of tagging (particularly fin ray scars). PIT tags were inserted following standard protocols to reduce tag loss. PIT tag loss can be <5% (e.g., Ombredane et al. 1998) with proper technique.
All samples are instantaneous	To be considered instantaneous, the duration of the sampling period should be <10% of the interval between sampling periods (Lebreton et al. 1992). The mark recapture program was <30 days to satisfy this criterion.

## 2.5 Bull Trout Movement Analysis

Acoustic telemetry is used in Carpenter Reservoir and the Middle Bridge River to monitor Bull Trout movements. We used two acoustic telemetry gates from the spring of 2015 to spring 2018 to monitor linear movements in the reservoir and into and out of the Middle Bridge River. The gates verified that Bull Trout movements were random within Carpenter Reservoir during the mark-recapture period (i.e., no migration occurred; Putt et al. 2019). Having adequately verified this mark-recapture assumption, we repositioned the receivers in the spring of 2018 to more broadly monitor Bull Trout movements throughout the reservoir and the Middle Bridge River.

### 2.5.1 Bull Trout Acoustic Tagging

Twenty Bull Trout were angled from May 21 to June 21, 2019 at the confluences of Bobb, Nosebag, Tommy, Marshall, Keary, and Truax Creeks, and tagged with acoustic transmitters (V13 transmitters, Vemco, Bedford, Nova Scotia; 2-year battery life, 13 mm diameter, 48 mm length, transmission rate

20-60 s). To minimize adverse tagging effects, we aimed to tag Bull Trout >550 g to ensure that tag weight (in air; 11 g) was < 2% of the total fish weight in air, a tag burden with negligible effects on fish performance (Winter, 1983). Bull Trout were anaesthetized in dark coolers using clove oil (10-parts ethanol, 1-part clove oil) until they lost equilibrium and exhibited weak opercular motion. Tags were surgically implanted into the abdominal cavity using a small incision on the mid-ventral line that was closed using two monofilament sutures (Wagner et al. 2011). Fish recovered in a dark cooler monitored for temperature and oxygen and were released when active and upright.

### 2.5.2 Acoustic Receivers

In April of 2018 we deployed six acoustic receivers (VR2W-69 kHz; Vemco) throughout Carpenter Reservoir and four acoustic receivers in the Middle Bridge River (Table 2.2; Figure 2-2). The river receivers were deployed together to increase detection probability (see below and Putt et al. 2018), while the receivers in Carpenter Reservoir were deployed singly. Reservoir receivers were suspended in the water column ~1 m off the bottom (with the transducer oriented upwards) and marked with floats, while receivers in the Middle Bridge River were attached directly to bottom anchors. The receivers were deployed on May 1, 2018 and recovered on April 24, 2019. The data and analyses presented herein are therefore representative of 2018, Year 6 of BRGMON-4, and the first year acoustic receivers were used to broadly monitor Bull Trout throughout the reservoir (as opposed to gates).

The receivers provided presence-absence data for important locations throughout Carpenter Reservoir and detected fish that moved into the Middle Bridge River. Receivers were approximately spaced evenly along the length of the reservoir, and were stationed proximate to locations or features of interest:

1. Terzaghi Dam (km 0.5): Assessed presence in the deep lacustrine portion of the reservoir and informed the risk of Bull Trout entrainment through Terzaghi Dam.
2. Bridge River 1 (BR1) and Bridge River 2 (BR2) Diversion Tunnels (km 3.5): Assessed presence in the deep lacustrine portion of the reservoir and informed the risk of Bull Trout entrainment through BR1 and BR2.
3. C3/West of Strawberry Creek (km 9.4): Assessed presence in a deep, channelized area between the main spawning tributaries and the lacustrine portion of the reservoir.
4. Keary Creek (km 16.6): Assessed presence at an important spawning and feeding tributary.
5. Tommy Creek (km 25.7): Assessed presence at an important spawning and feeding tributary.
6. Truax Creek (km 35.0): Assessed presence at an important spawning and feeding tributary.
7. Middle Bridge River (km 49.5): Assessed presence in the Middle Bridge River, an important Bull Trout spawning tributary.

The area in Carpenter Reservoir within which a receiver can detect transmitters (the detection range) varies with depth, water temperature, and turbidity (Putt et al 2019). Range testing in 2015 suggested receivers in Carpenter Reservoir had an 80% detection range of ~300 m at full pool (i.e., 80% of transmissions were detected within 300 m of the receivers), while receivers in the Middle Bridge Reservoir had an 80% detection range of ~10-15 m (Putt et al. 2016b). Of the six receivers deployed in Carpenter Reservoir from 2018-2019, three (Terzaghi, Diversion, and C3) were not

subject to dramatic changes in detection range, while the three other receivers (Keary, Tommy, and Truax) were located on shallower tributary fans. The detection range of these shallow receivers decreased as reservoir elevation decreased and was 0 m when the reservoir reached its minimum elevation in early May of 2019. The magnitude of the decrease in detection range is unknown, and we assume detection range was low at receivers proximate to Keary, Tommy, and Truax from mid-March to late May (i.e., the period of rapid reservoir drawdown and reservoir filling).

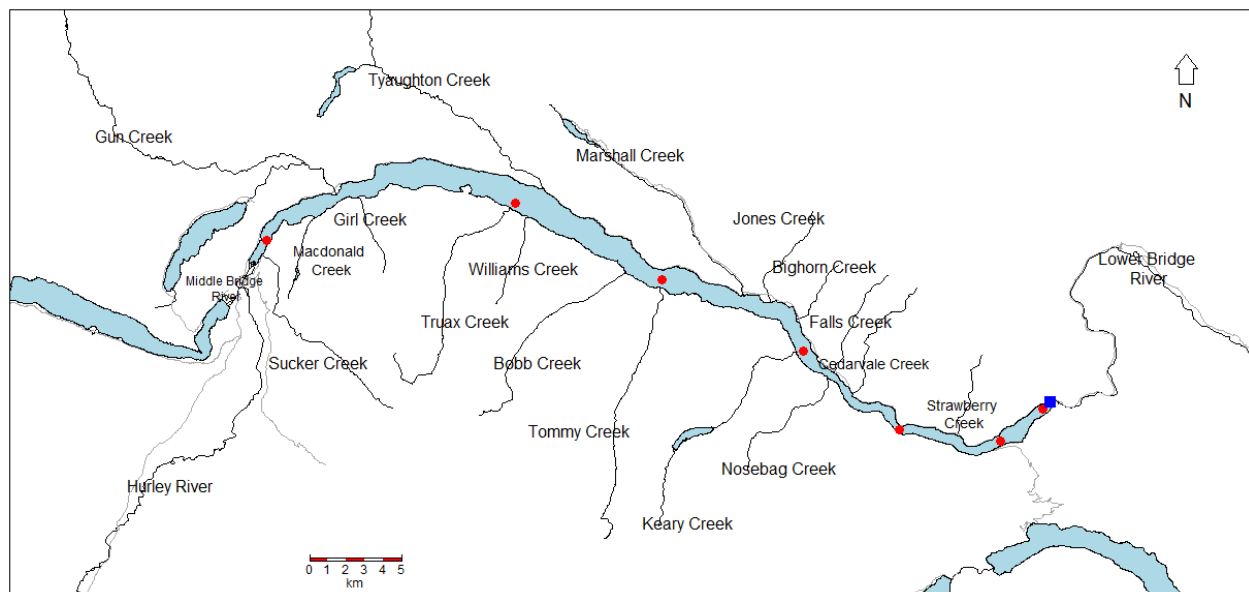
Water depths in the Middle Bridge River were more consistent, and receivers were positioned ~0.5-1.5 m below the water surface depending on discharges from Lajoie Dam and the Hurley River. Due to poor detection range in the Middle Bridge River, four receivers were deployed together (two on each side of the river) to increase the probability of a tag being detected by at least one receiver.

Data from the seven receiver locations were used to determine how many fish were present at each location throughout the monitoring year, as well as how individual tags moved between the receiver locations.

**Table 2.2 Acoustic receiver locations, habitat types, and water depth at full pool and low pool from May 1, 2018 to April 24, 2019.**

Receiver Name	Number of Receivers	KM From Terzaghi	Habitat Type	Approximate Depth (4) at Full Pool (~645 m)	Approximate Depth (m) at Low Pool (~615 m)
Terzaghi	1	0.5	Deep	45-55	20-25
BR1 and BR2 Diversion	1	3.5	Deep	45-55	20-25
CR3/West of Strawberry	1	9.4	Deep	30-35	10-15
Keary	1	16.6	Tributary Fan	25-30	0
Tommy	1	25.7	Tributary Fan	20-25	0
Truax	1	35.0	Tributary Fan	10-15	0
Middle Bridge River (MBR)	4	49.5	River	0.5-1.5	0.5-1.5





**Figure 2-2 Major Carpenter Reservoir tributaries and acoustic telemetry receivers in the reservoir and Middle Bridge River. Red circles show the locations of receiver stations, and the blue square is Terzaghi Dam.**



### **2.5.3 Movement of PIT-tagged Bull Trout**

During all BRGMON-4 fish sampling events, Bull Trout were tagged with a unique PIT tag. PIT tags allow recaptures to be identified for mark-recapture modelling, but also provide growth and location data when tagged fish are recaptured. We examined specific recapture locations of Bull Trout encountered multiple times during BRGMON-4. Location data can be combined with broad-scale movement patterns identified in the acoustic monitoring program to inform Bull Trout behavioural patterns in Carpenter Reservoir.

## **2.6 Analysis of Shoreline Electroshocking CPUE**

Shoreline electroshocking indexing was proposed in the BRGMON-4 TOR to describe seasonal and annual variation in relative abundance, growth, and distribution of all species in Carpenter Reservoir. The proposed indexing program was modeled after shoreline electroshocking completed in September 2001 that was used to inform the WUP process (Dr Korman, pers. comm). From 2012 to 2014, we determined that shoreline electroshocking was inconsistent in Carpenter Reservoir due to highly variable spatial and temporal turbidity (i.e., we could not determine electroshocking efficiency) and alternative and more robust indexing methods were pursued (e.g., a Bull Trout open mark-recapture program). We continued an abbreviated indexing program during annual mark-recapture activities, where we electroshocked consistently at tributary confluences and standardized deep and shallow shorelines to obtain annual counts and CPUE of Rainbow Trout, kokanee, Bull Trout, and Mountain Whitefish. We compared our abbreviated indices from shoreline electroshocking during BRGMON-4 to counts from 2001 to broadly determine whether counts or distributions of counts changed between these two periods (CPUE could not be compared due to varying methodology).

## **2.7 Analysis of Biological Data**

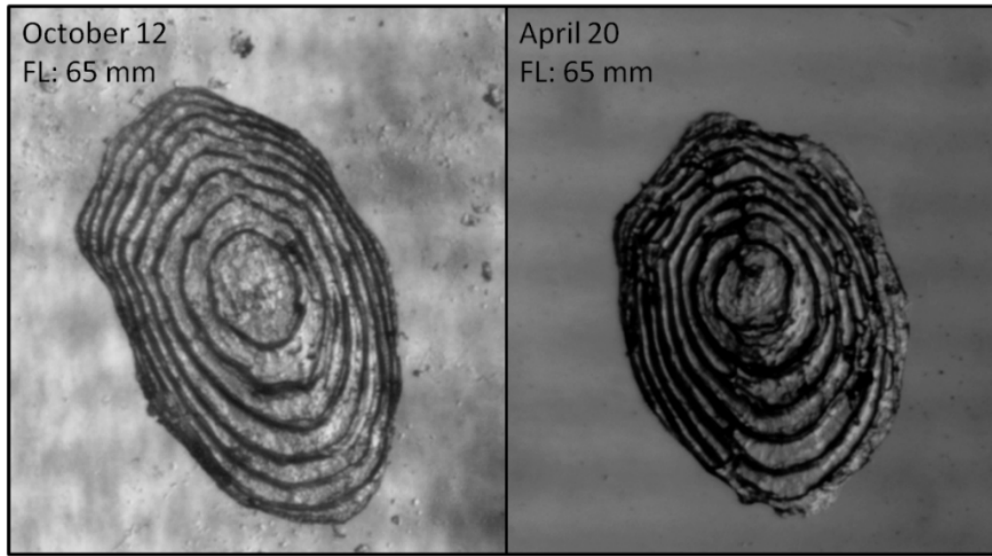
The target species for monitoring of biological data were Bull Trout, Rainbow Trout, Mountain Whitefish, and kokanee. We collected length and weight data for all target species captured, and age was determined for a subset of all species captured. Continuous collection of biological data will determine potential changes over the course of the monitoring period.

### **2.7.1 Ageing Analysis**

Scales collected above the lateral line below the dorsal fin were later mounted on glass slides and age determined under magnification by two independent analysts (Zymonas and McMahon 2009). Scales are not a reliable aging structure for adult Bull Trout, and fin rays were sampled from Bull Trout (the first 2-3 rays from the pectoral or pelvic fin) and archived for future ageing. Otoliths (a calcified structure located in the brain cavity) were collected opportunistically from mortalities of all species and examined under magnification by two independent analysts to identify growth annuli and estimate age (Zymonas and McMahon 2009).

We captured newly emerging Rainbow Trout juveniles that were too small to sample for scales (<50 mm fork length; assumed to be age-0) during backpack electroshocking of select Carpenter Reservoir

tributaries in 2016 through 2018 (Putt et al., 2019). We captured emergent fry in August through September and again in April through June. Rainbow Trout undergo minimal growth while overwintering in Carpenter Reservoir tributaries in their first few years of life, and the young-of-the-year (YOY) that emerged in the fall of one year were nearly indistinguishable from those captured in the following spring (both in appearance and during scale ageing; Figure 2-3). These Rainbow Trout were misclassified as age-0 due to the lack of identifiable growth (Minard and Dye 1998). In standard ageing procedures, a juvenile that has survived one winter should be classified as age-1 based on winter growth annuli (Minard and Dye 1998). We accounted for this underestimation by adding one year to all Rainbow Trout captured after at least one winter of growth. This assumes that all Rainbow Trout reared for at least one winter in the tributaries, which is likely accurate considering Rainbow Trout life history characteristics (McPhail 2007).



**Figure 2-3 Scales assessed as age-0 collected from Rainbow Trout captured during tributary electroshocking. The scale collected on April 20 (right) has undergone a winter of growth and should be classified as age-1; however, winter growth annuli are indistinguishable.**

### 2.7.2 Length vs Weight and Body Condition

The relationship between fish length and weight can be used to monitor gross changes in fish health and growth. Log-linear regression was used to model the annual length ( $L$ ) vs weight ( $W$ ) relationships for each species (Ogle 2016a):

$$W_i = \alpha L_i^\beta 10^{\epsilon_i} \quad \text{Eq 8}$$

$$\log(W_i) = \log(\alpha) + \beta \log(L_i) + \epsilon_i \quad \text{Eq 9}$$

where  $\alpha$  and  $\beta$  are intercept and slope parameters, and  $\epsilon$  is multiplicative model error. We examined the effect of year by comparing the length-weight model above to a model including a year variable using one-way analysis of variance (ANOVA, alpha 0.05; modelling completed using R package FSA, Ogle 2016b).

Fulton's Condition Factor was also calculated to describe the annual body condition of fish in Carpenter Reservoir (Anderson and Neumann 1996).

$$K_F = \frac{W * 10^N}{L^3} \quad \text{Eq 10}$$

where  $W$  is weight in grams,  $L$  is length in millimeters, and  $N$  is an integer that scales the condition factor close to a value of one ( $N=5$  for Carpenter Reservoir salmonids). We compared the mean condition factor values between years using one-way ANOVA ( $\alpha = 0.05$ ), and then used Tukey's pairwise hypothesis testing (Tukey's Honest Significant Difference-HSD) to determine which mean condition factor values were statistically different (Ogle 2016a, 2016b).

We examined length-weight relationships for population subsets of Bull Trout, Rainbow Trout, and Mountain Whitefish. For Bull Trout, we isolated adults between 200 mm and 350 mm in length (approximately ages 3 to 6) and greater than 350 mm in length (greater than age 6). Bull Trout age 3-6 represent potential adult spawners that are still undergoing measurable annual growth (have not reached asymptotic length). Rainbow Trout were separated into three categories for length and weight modelling: Rainbow Trout caught in the reservoir only, Rainbow Trout caught above the drawdown boundary in Marshall Creek (i.e., a stream-resident population isolated from Carpenter Reservoir), and a combination of all Rainbow Trout caught in the reservoir and juvenile Rainbow Trout caught in the tributaries (i.e., juveniles that will likely migrate to the reservoir). For Mountain Whitefish, we examined biological characteristics of individuals captured in Carpenter Reservoir during the spring and summer field sampling programs, as well as adult spawners captured in the Middle Bridge River during winter angling in 2013, 2016, and 2019.

### 2.7.3 Von Bertalanffy Growth Model

Paired lengths and ages were used to fit von Bertalanffy growth functions for Rainbow Trout, Mountain Whitefish, and Bull Trout (von Bertalanffy 1938). Species-specific growth models describe growth characteristics and can be used to compare growth to other systems in the region. Data were pooled from all study years and von Bertalanffy models were fit by the nonlinear model equation:

$$L_t = L_\infty [1 - \exp(-K(\text{age} - t_0))] + \varepsilon \quad \text{Eq 11}$$

where  $L_t$  is length-at-age at time  $t$ ,  $L_\infty$  is the asymptotic length,  $K$  is a growth coefficient,  $t_0$  is the time at which length is theoretically zero, and  $\varepsilon$  is the residual error. The growth model was fit iteratively for the parameters  $L_\infty$ ,  $K$ , and  $t_0$  using a minimum sums of squares optimization (Ogle 2016b).

### 2.7.4 Age-Length Keys

Age-length keys (ALKs) were developed for Bull Trout, Rainbow Trout, and Mountain Whitefish in Carpenter Reservoir to allow age estimation for fish not sampled for ageing structures (Ogle 2016b). An ALK is a probability matrix that determines the probability that a fish from each length class is part of each age class and vice versa (Guy and Brown 2007; Ogle 2016a). These probabilities are used

to develop theoretical proportions of fish from each length class that should be assigned to each age class, and are used to estimate ages for unaged fish in a population (Isermann and Knight 2005).

## **2.8 Reservoir Tributaries and Middle Bridge River Spawner Assessments**

### **2.8.1 Tributary Visual Surveys**

Kokanee spawning surveys were conducted in Carpenter Reservoir tributaries to estimate migration timing and spawning duration. Visual surveys took place in Girl Creek, Jones Creek, Macdonald Creek, Marshall Creek, Sucker Creek, and Truax Creek. Survey lengths extended from the tributary confluence to the most upstream accessible location (i.e., before upstream passage was too difficult for surveyors). Visual survey lengths below the maximum reservoir elevation boundary were variable as reservoir elevation increased, while survey lengths above the maximum pool level remained constant and ranged from ~50 m to 140 m. A GPS track was recorded for each survey to determine the weekly change in stream length below the maximum elevation boundary.

All tributaries (apart from the Middle Bridge River) measured less than 5 m across and crews surveyed the full wetted width from one bank, recording the number of adult kokanee, number of redds, water clarity (good, moderate, or poor), and discharge level (high, moderate, low, dry). Kokanee counts were separated into fish observed below the maximum pool elevation of 648 m (potentially spawning in areas at risk of flooding) and fish observed above the maximum pool elevation (unlikely to be affected by flooding).

Temperature data loggers were installed in Marshall Creek, Gun Creek, Macdonald Creek, Truax Creek, and the Hurley River and Middle Bridge River in the spring of 2019 to monitor temperature profiles through the summer and during the fall kokanee migration period. Temperature loggers were installed in the water column, not at redd depth, but we assume that water column and redd-depth temperatures are equivalent (no groundwater effects). We determined the 50% hatch dates (the date at which 50% of eggs have hatched) for kokanee based on the onset, peak, and end of the spawning migration counts, and an ATU requirement of 680 (at 7.5°C; DFO 1997). The 50% hatch dates identify the time period during which incubating eggs or newly emerged kokanee juveniles would be vulnerable to inundation from increasing reservoir elevation. Kokanee are also known to spawn in the Middle Bridge River (Putt et al. 2017), although visual surveys cannot be completed due to high turbidity. We calculated the 50% hatch timing for kokanee in the Middle Bridge River to determine when kokanee eggs and newly emerged juveniles could be dewatered during ramp down events at the Lajoie Dam. Average migration timings from the tributaries were used as a surrogate for the Middle Bridge River.

## **3 Results**

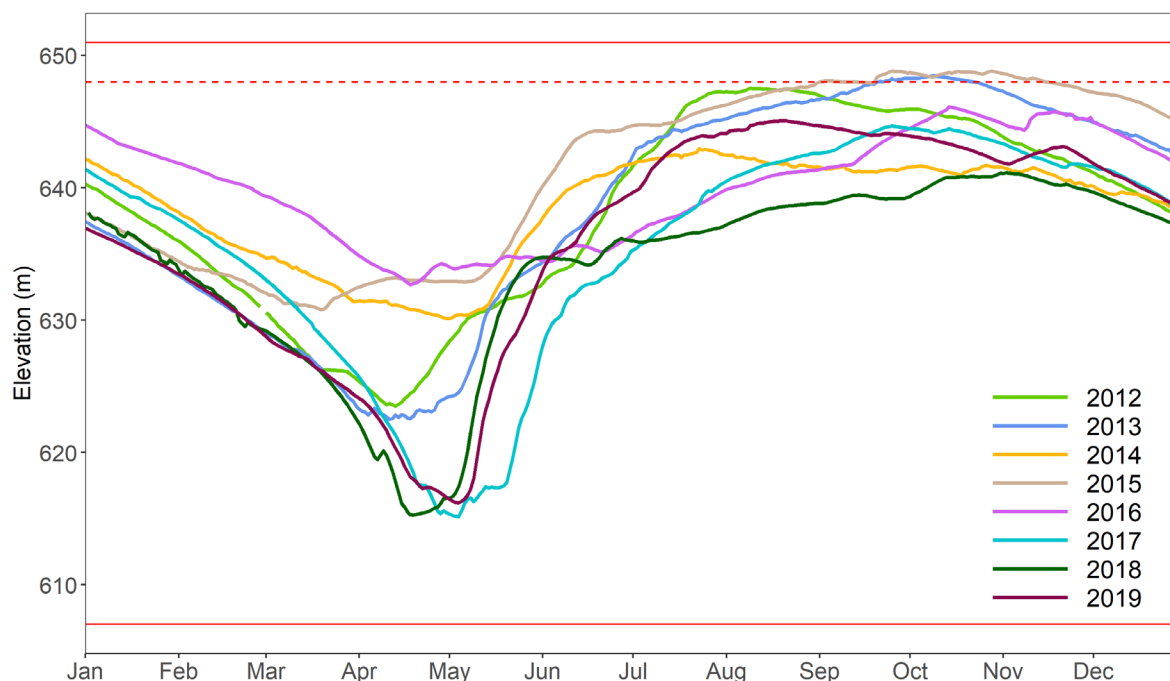
### **3.1 Carpenter Reservoir Operating Parameters**

In 2019, Carpenter Reservoir elevation was characterized by a low minimum elevation and average fall maximum elevation (Figure 3-1). The reservoir reached a minimum elevation of 616.2 m on May 5, 2019, then filled rapidly during the first three weeks of May. A maximum elevation of 645.1 m was

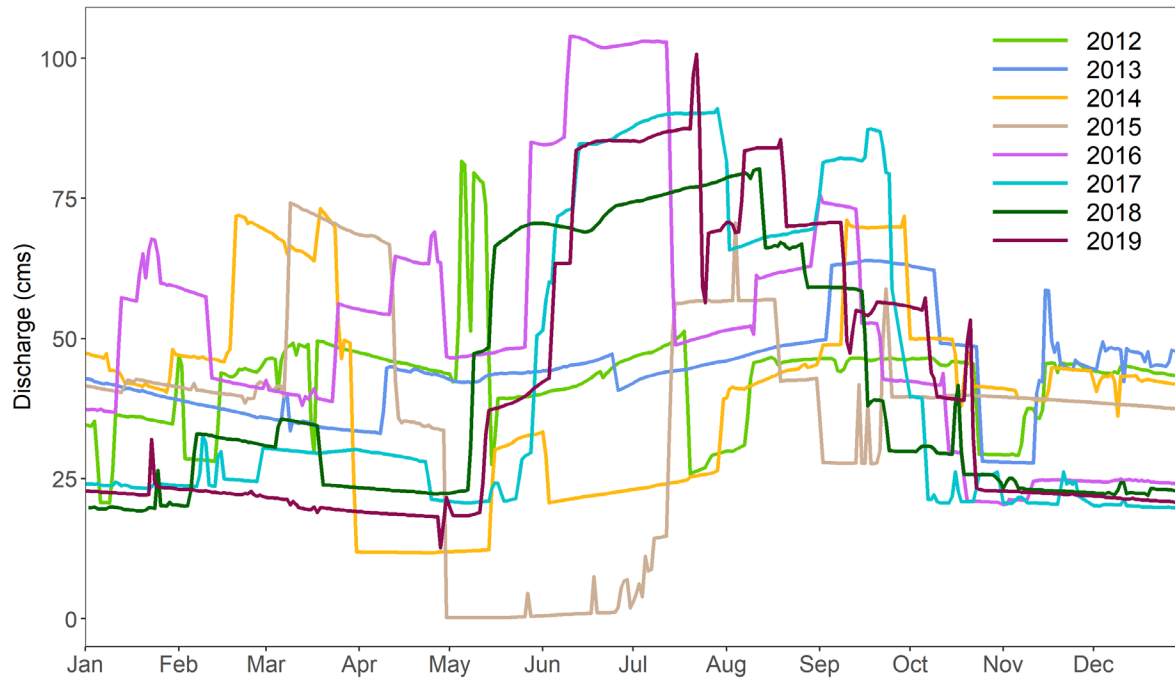
reached on August 19, 2019. Rapid filling in May corresponded with heightened in-stream flow releases from Lajoie Dam (from 25 cms to 70 cms; Figure 3-2) and the natural freshet period in the region. Reservoir elevation in 2019 remained within normal operating conditions specified for the reservoir of a minimum elevation of 606.6 m and a maximum elevation of 651.1 m.

Instream flow releases from Lajoie Dam in 2019 were relatively consistent with previous years (Figure 3-2). Flow releases were consistently below 25 cms between late October and mid-May, and no substantial flow reductions occurred during the Mountain Whitefish spawning and incubation period (November to mid-April). Lajoie Dam is operated to maintain a minimum flow schedule based on Downton Reservoir elevations rather than a specific hydrograph, making it difficult to compare flow amongst years. Preliminary comparisons suggest flow releases in November and December have been lower, and maximum flow releases in May through July have been higher during Modified Operations relative to pre-WUP and N2-2P regimes.

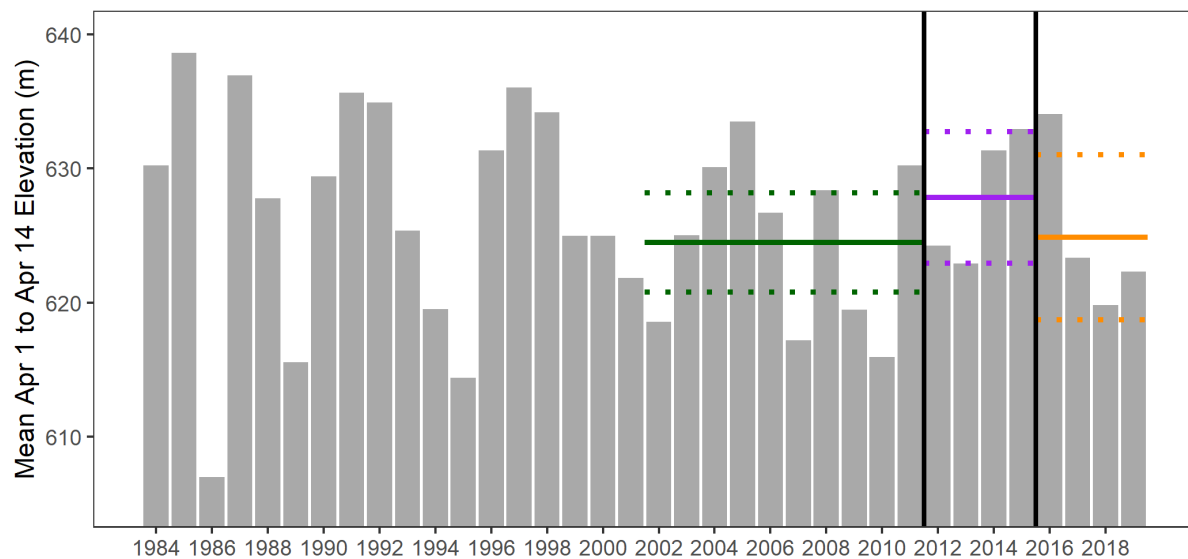
We compared Carpenter Reservoir elevation parameters between three operational regimes: the 10-year period prior to WUP implementation, the WUP/N2-2P period (2011-2015), and the Modified Operations scenario (2016-2019). There was no difference in average elevation in the first two weeks of April (Figure 3-3; ANOVA p-value 0.723, DF = 2, F = 0.33). Mean elevation varied substantially during the summer, and was significantly different between the three periods (Figure 3-4; ANOVA p-value 0.031, DF = 2, F = 4.48). Summer elevation during Modified Operations was lower relative to the other two periods.



**Figure 3-1 Carpenter Reservoir elevations (2012 to 2019).** Solid red lines represent maximum and minimum operational targets of 606.55 m and 651.08 m, respectively, and dashed red line represents the soft operational maximum target of 648 m.

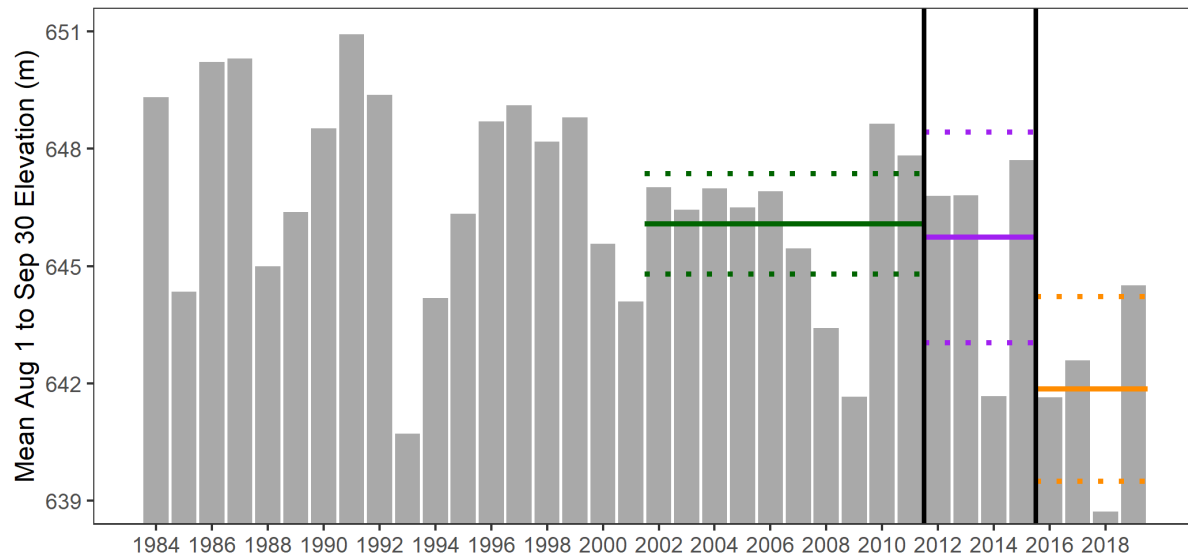


**Figure 3-2 In-stream flow releases from Lajoie Dam to the Middle Bridge River (2012 to 2019).**



**Figure 3-3 Historic average Carpenter Reservoir elevation from April 1 to April 14. Green lines show mean elevation (dashed lines represent 95% confidence intervals) from 2002 to 2011, purple lines show mean elevation from 2012 to 2015, and orange lines show mean elevation from 2016 to 2019.**





**Figure 3-4 Historic average Carpenter Reservoir elevation from August 1 to September 30. Green lines show mean elevation (dashed lines represent 95% confidence intervals) from 2002 to 2011, purple lines show mean elevation from 2012 to 2015, and orange lines show mean elevation from 2016 to 2019.**

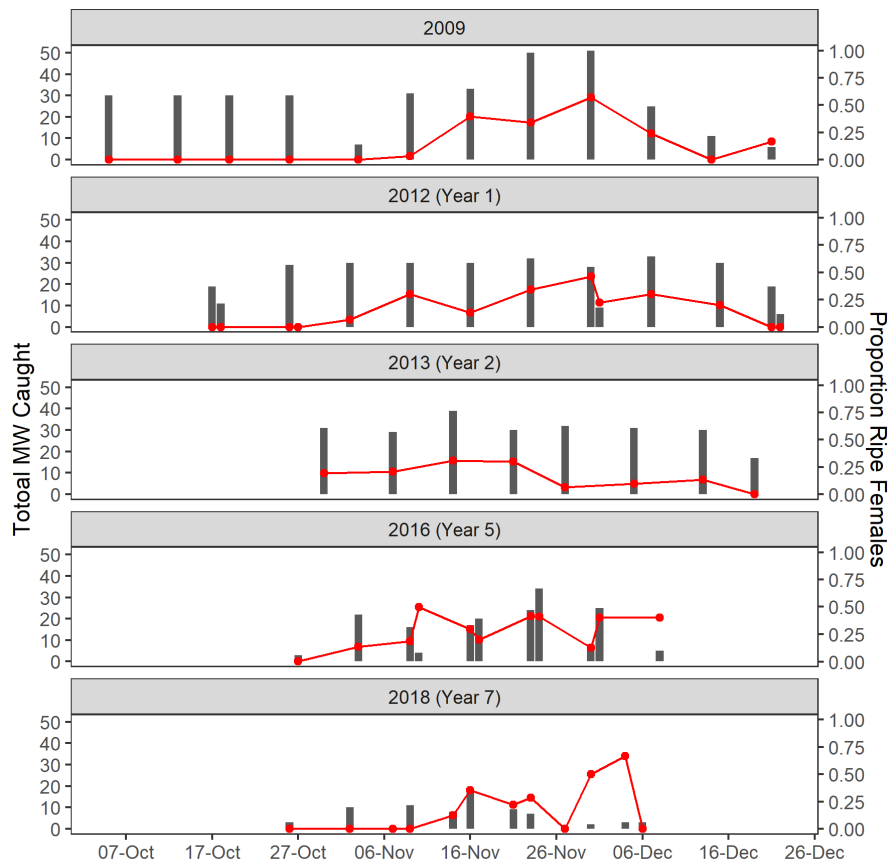
### 3.2 Middle Bridge River Mountain Whitefish Spawning Assessment

Weekly angling surveys in the Middle Bridge River were used to determine spawning dates for Mountain Whitefish. Surveys were completed roughly every second year to develop a time-series of Mountain Whitefish spawner data. Mountain Whitefish surveys conducted in 2018 were compared to those performed in 2009, 2012 (Year 1 of BRGMON-4), 2013 (Year 2; Tisdale 2013), and 2016 (Year 5; Putt et al. 2018).

A total of 75 Mountain Whitefish were angled from the Middle Bridge River at the Hurley and Goldbridge bridges from October 26 to December 6, 2018. The first ripe female was captured on November 2 and ripe females were captured until December 4 (Figure 3-5). Peak catches of Mountain Whitefish occurred on November 16, which was also when the proportion of ripe females likely peaked. High female proportions in December are due to low overall capture rates. Migration timing in 2018 was similar to previous years, with the onset occurring in late October and peak catches in the last two weeks of November. Fork lengths of angled Mountain Whitefish were compared from 2009 to 2018, and average fork length was smaller in 2016 and 2018 relative to previous years (particularly for males; ANOVA p-values < 0.001 for males, females, and males and females combined; Figure 3-6).

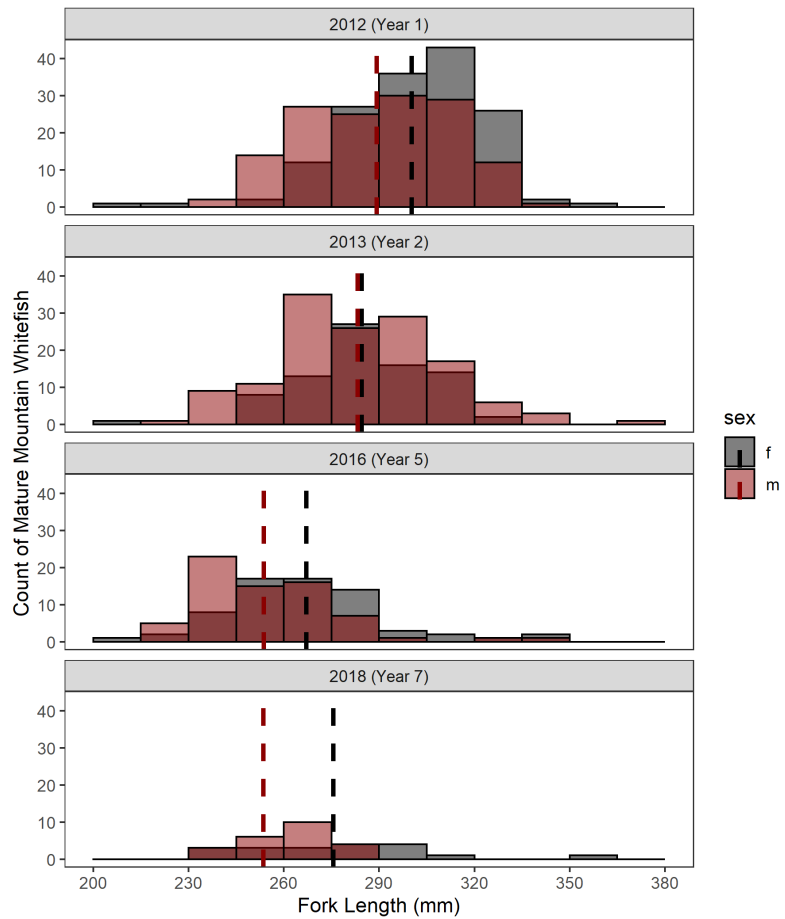
At the onset of the Mountain Whitefish migration in 2018 (October 26), mean daily temperature in the Middle Bridge River was 8.3 °C, and at peak count (November 16) the temperature was 6.9°C. Using these dates of migration onset and peak spawning and an ATU requirement of 327 for Mountain Whitefish incubation, 50% hatch may have begun by mid-December and peaked on January 3, 2019 (Figure 3-7). We compared peak spawning and hatch dates to those calculated for

2016. Peak spawning and peak hatch occurred earlier in 2018-2019 relative to 2016-2017, possibly due to warmer water temperatures in the Middle Bridge River; however, the range of dates for spawning and incubation periods were similar between the two years.

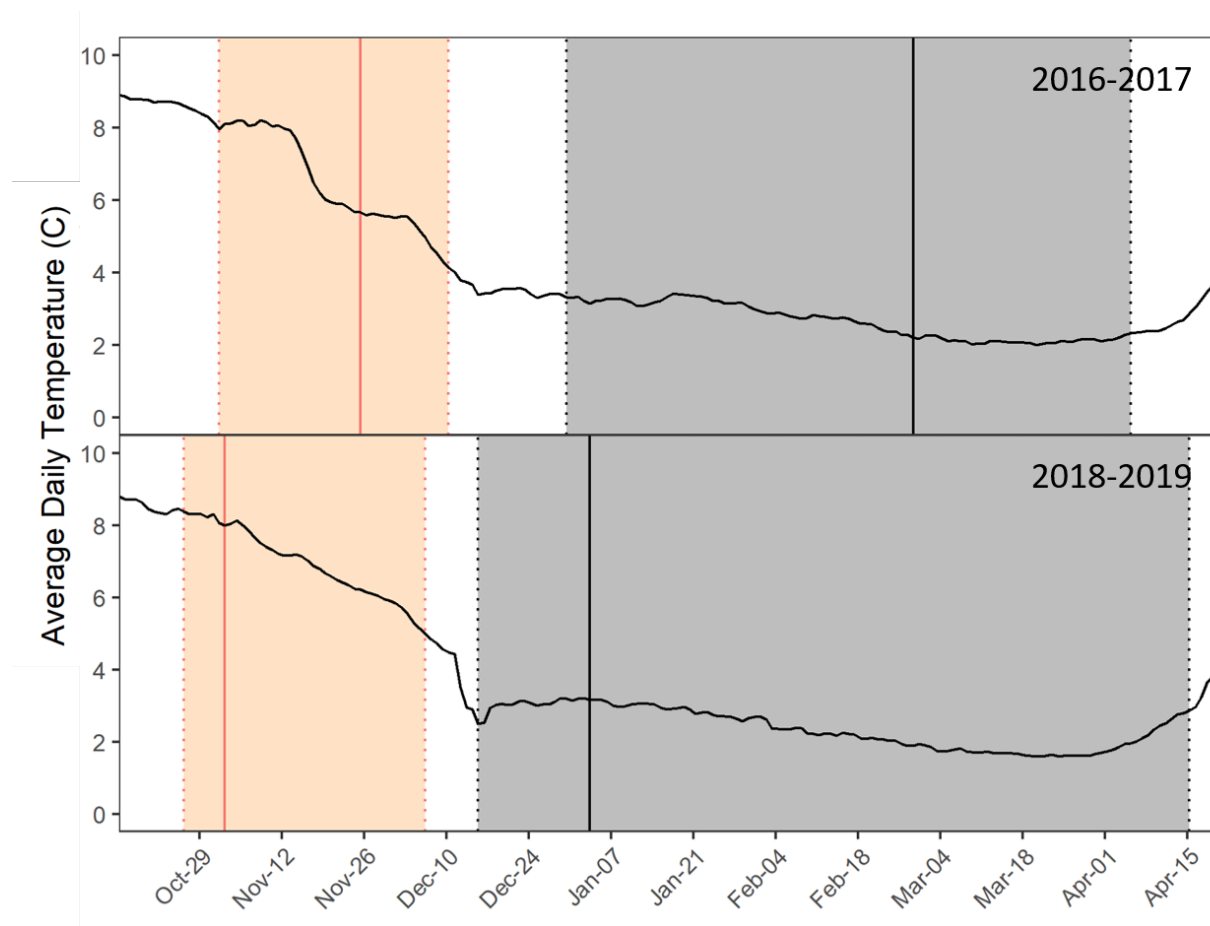


**Figure 3-5 Proportion of ripe female Mountain Whitefish captured during Middle Bridge River spawning assessments from 2009 to 2018 (red lines). Total catches are shown as grey bars.**





**Figure 3-6 Fork lengths of mature male and female Mountain Whitefish captured during Middle Bridge River spawning assessments in 2012, 2013, 2016, and 2018. Dashed lines represent mean fork length.**



**Figure 3-7 Mountain Whitefish spawning date range (red area) and 50% hatch date range (grey area) in the Middle Bridge River in winter 2016/2017 and 2018/2019 (ATU requirement of 327). Peak spawning and 50% hatch dates are shown as red and black lines, respectively.**

### 3.3 Bull Trout Abundance Estimation

The 2019 mark-recapture program took place in Carpenter Reservoir from June 17 to July 5 during reservoir filling (Figure 3-8). Of the 157 Bull Trout captured via angling and boat electroshocking, 41 (27.3%) were recaptured from previous marking periods (Table 3.1). Relative effort for angling and electroshocking remained similar amongst the five monitoring years, and in 2019, 107.8 hours were spent angling and 5.2 hours were spent electroshock (gill netting was not used as a capture method in 2019). A total of 82 Bull Trout were captured during angling, but electroshocking had the highest Bull Trout CPUE (Figure 3-9) and 75 Bull Trout were caught using this method. CPUE was relatively consistent for each capture method across the four years of the designated mark-recapture program (Figure 3-9).

The mean fork length of Bull Trout captured during the 2019 mark-recapture program was 415.8 mm (SD 82.6 mm; Table 3.2). Average fork length for Bull Trout captured during the mark-recapture

program differed from 2015 to 2019 (ANOVA;  $F = 18.5$ ,  $p\text{-value} < 0.001$  Figure 3-10), and a Tukey's test indicated that mean fork lengths in 2018 and 2019 were statistically similar, and higher than in 2015 through 2017 (using a significance level of 0.05).

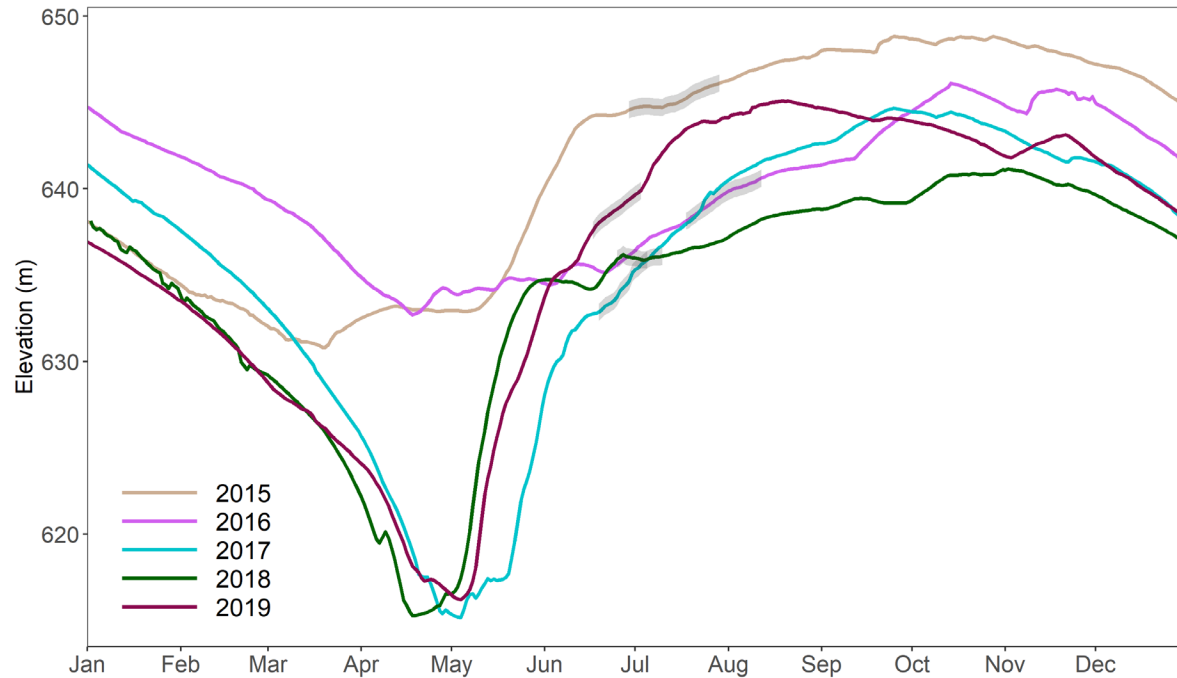
Age data suggest the age distribution of Bull Trout captured during the annual mark-recapture program is shifting towards more mature Bull Trout (Figure 3-11). In 2015 the mark-recapture catches were dominated by Bull Trout aged 4 and 5, while in 2018 and 2019, the catches were dominated by Bull Trout aged 6 and older. From 2015 through 2017, the percentage of Bull Trout age 6 and greater was 37%, 48%, and 45%, respectively, while the percentage greater than age 6 was 58% in 2018 and 59% in 2019 (Figure 3-11).

**Table 3.1 Mark-recapture capture summary data for Carpenter Reservoir Bull Trout (2015 to 2019).**

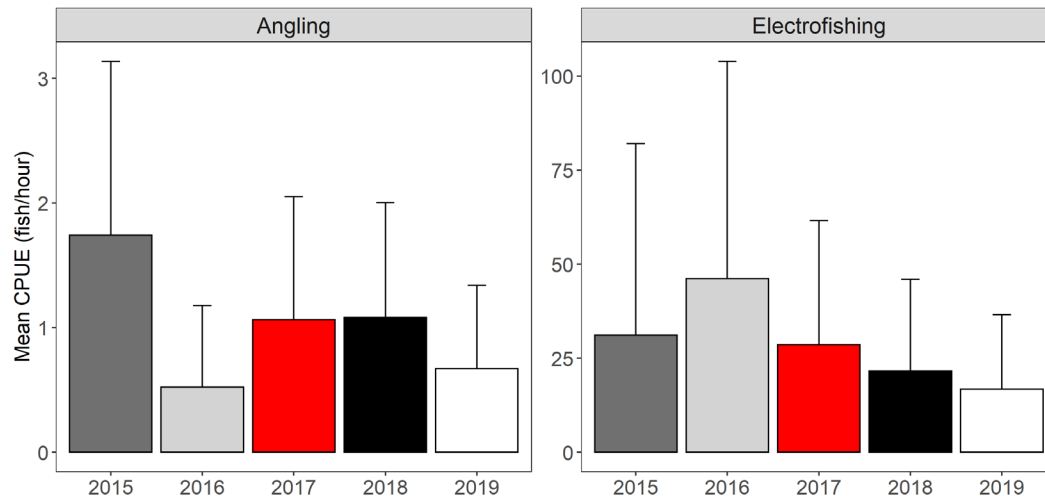
Year	Mean (min and max) Reservoir Elevation (m)	Total Number Caught	Number Recaptures	Recapture Percentage
2015 (Jun 29 – Jul 31)	645.2 (644.6-646.1)	270	-	-
2016 (Jul 17 – Aug 13)	639.5 (638.1-640.6)	144	5	3.5
2017 (Jun 19 – Jul 7)	634.3 (632.9-635.9)	227	10	4.4
2018 (Jun 25 – Jul 12)	636.0 (635.9-636.2)	152	20	13.2
2019 (Jun 17 – July 5)	638.8 (637.6-639.9)	150	41	27.3

**Table 3.2 Fork lengths (mm) of Bull Trout captured during mark-recapture sampling in Carpenter Reservoir (2015-2019).**

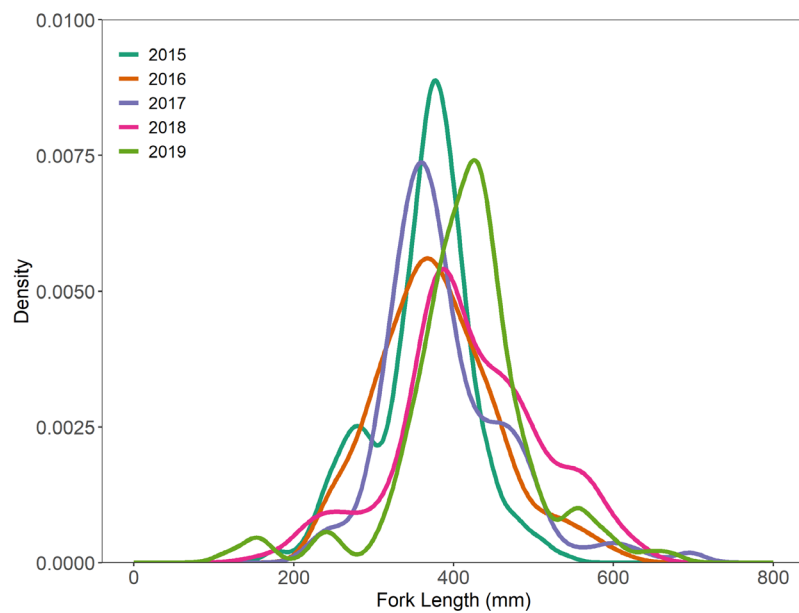
Year	Fork Length (mm)				
	N	Mean	St. Dev	Min	Max
2015	269	363.1	61.1	174	540
2016	140	379.4	74.6	241	605
2017	227	388.3	77.0	220	695
2018	152	418.1	91.4	162	622
2019	150	415.8	82.6	118	670



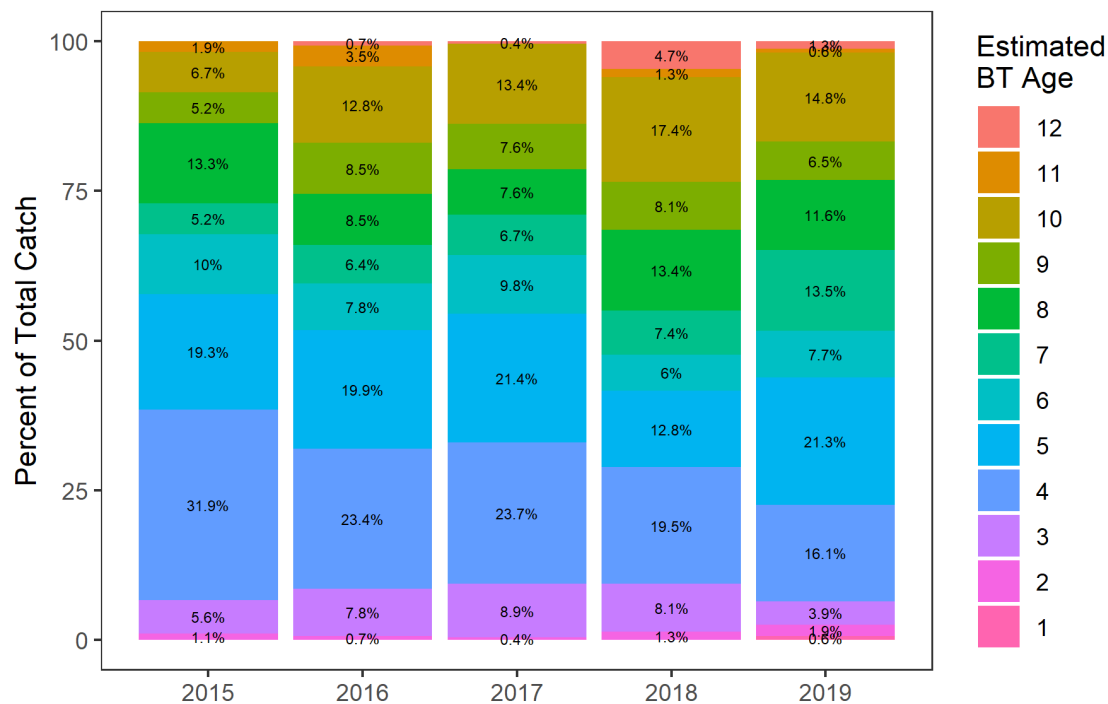
**Figure 3-8 Carpenter Reservoir elevation (2015-2019) and annual Bull Trout mark-recapture periods (grey bands). Mark-recapture sampling occurred in July in 2015 and 2016 but was moved to early June in subsequent years to reduce temperature-related handling stress.**



**Figure 3-9 Gear-specific mean CPUE (fish/hour) with standard deviations for Bull Trout captured during the mark-recapture program. Y-axis is free to show variation in gear types.**



**Figure 3-10 Probability density function (from kernel density estimation) of fork lengths for Bull Trout captured during the Carpenter Reservoir mark-recapture program.**

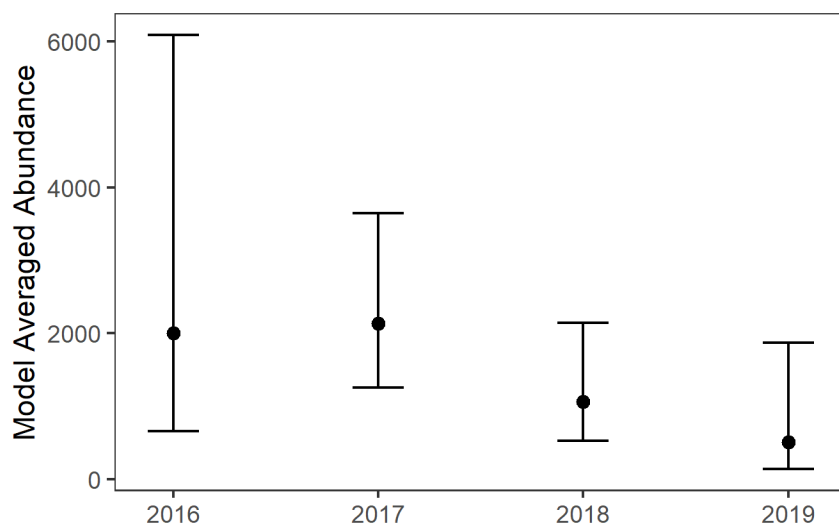


**Figure 3-11 Bull Trout captures during annual mark-recapture sampling in Carpenter Reservoir separated into age classes estimated using Bull Trout Age Length Key (ALK).**

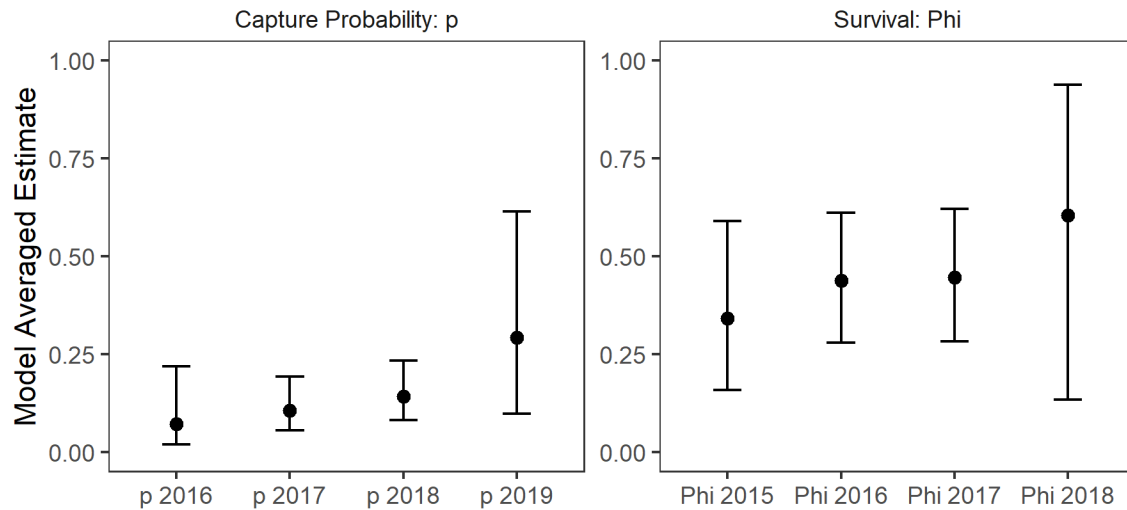
### 3.3.1 Mark-Recapture Modelling

The CJS model was used to estimate Bull Trout survival and capture probability, and an index of annual abundance was calculated for 2016 through 2019 (abundance cannot be calculated for 2015 because there is no value of capture probability for the first capture period). During model averaging, the fully time-varying model was dropped from the averaged results because survival in the final year was estimated as 1.0 (SE 0.0), indicating confounding between the survival and capture probabilities. The model-averaged CJS abundance of adult Bull Trout in Carpenter Reservoir was 2,004 individuals (95% CI: 660-6,086) in 2016, 2,137 (95%CI: 1,253-3,643) in 2017, 1,065 (95% CI: 530-2,143) in 2018, and 511 (95% CI: 139-1,872) in 2019 (Figure 3-12).

Parameter estimates and abundance estimates are relatively uncertain, as demonstrated by wide confidence intervals (Figure 3-12, Figure 3-13). Uncertainty in the mark-recapture estimates is expected given the broad nature of the program, the relatively low recapture rates in some years, and the varied reservoir conditions during sampling. Although there is uncertainty in the annual population of Bull Trout, preliminary evidence from the mark-recapture program suggests Bull Trout abundance in Carpenter Reservoir may have declined in recent years (Figure 3-12).



**Figure 3-12. Bull Trout abundance in Carpenter Reservoir calculated using model-averaged capture probabilities from the open mark-recapture model.**



**Figure 3-13. Model averaged capture and survival probabilities for the Carpenter Reservoir open mark-recapture model.**

### 3.4 Bull Trout Movement Analysis

#### 3.4.1 Characteristics of Acoustic-Tagged Fish

Approximately 20 Bull Trout were tagged annually from 2015 to 2019 with acoustic transmitters having an estimated battery life of two years. We aimed to tag Bull Trout with weights > 550 g to minimize tagging effects. Bull Trout tagged in 2019 ranged from age 3 to age 12, and age distributions (modeled using ALKs developed in 2016; Putt et al. 2017) were similar among the four years.

#### 3.4.2 Movement of Tagged Bull Trout

Acoustic telemetry receivers were used to monitor Bull Trout movement and determine presence and absence of Bull Trout in Carpenter Reservoir and the Middle Bridge River. We collected and downloaded the acoustic receivers in May of 2018 and subsequently redeployed them to be downloaded in April of 2019. There is a one-year lag between the acoustic data reported here and the other analyses described in this report.

A total of 35 tagged Bull Trout were detected by the acoustic receivers between May 2018 and April 2019. The detected tags were released in 2016 (n=3), 2017 (n=12), and 2018 (n=18). The three tags released in 2016 were scheduled to deplete their battery in mid-June of 2018 and their movement patterns after which are unknown.

Tagged Bull Trout were detected consistently at the Terzaghi Dam and Diversion receivers throughout the monitoring period (May 2018-April 2019; Figure 3-14), suggesting Bull Trout use deep lacustrine habitat throughout the year. Carpenter Reservoir elevations decrease slowly from February to early May (Figure 3-1), and we saw this pattern reflected in acoustic detection data. For example, detections ceased at Truax (a western tributary proximate to the Middle Bridge River) in

mid-February but continued until late March at Keary (an eastern tributary proximate to the lacustrine zone). It is unknown if this pattern is related to changing Bull Trout movement behaviours or declining detection ranges as water depth at receivers decreases, but both phenomena likely contributed. The amount and quality of habitat declines in Carpenter Reservoir as elevations decrease, and Bull Trout likely move east towards the lacustrine portion of the reservoir.

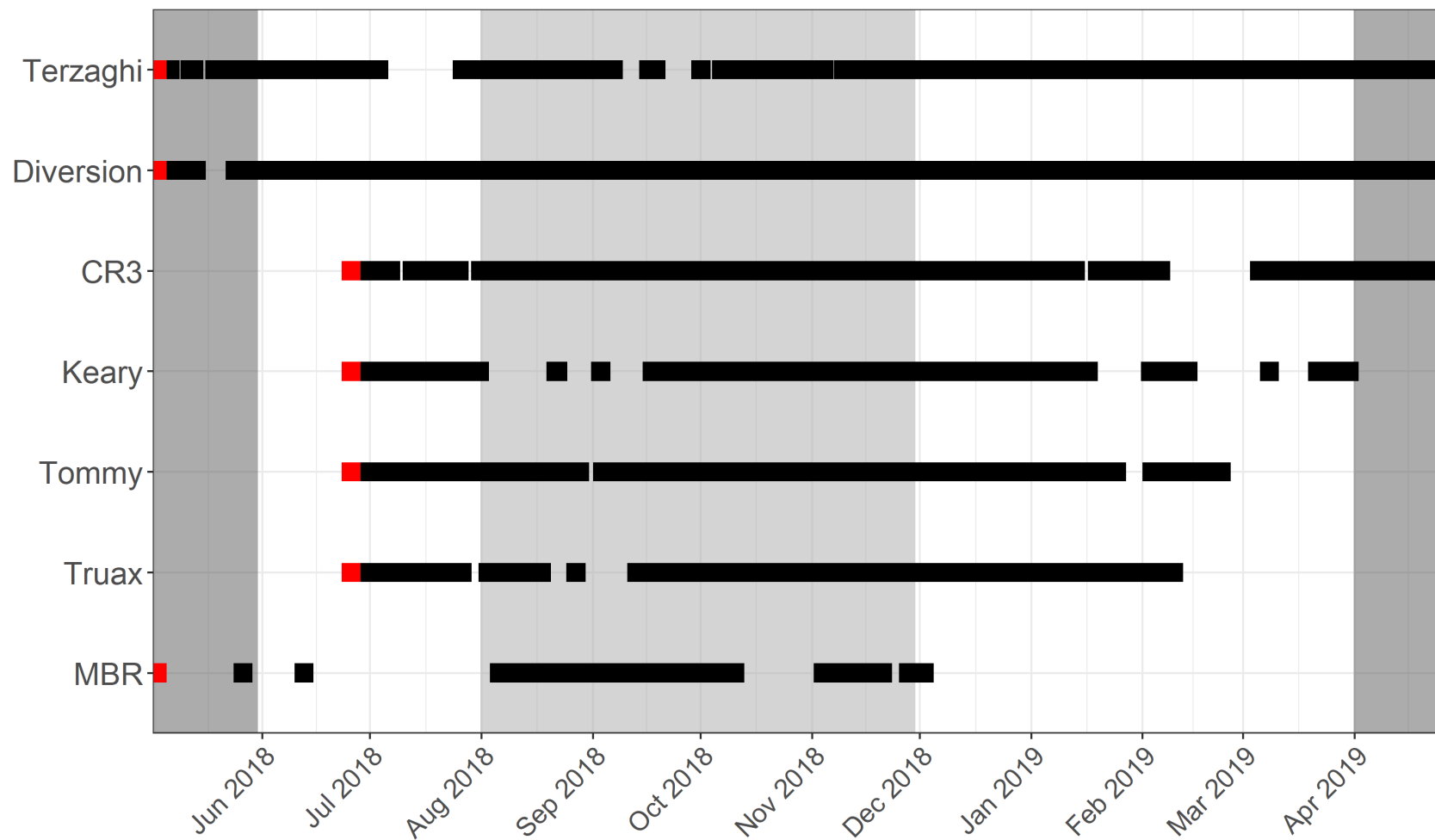
We summarized Bull Trout movements according to two elevation periods: low pool (April and May), and high pool (August through November). Bull Trout were detected at an average of 2.0 receivers (SD 0.7) during low pool, and 3.0 (SD 2.1) receivers during high pool. Similarly, based on receiver location alone (excluding movement in areas not monitored by receivers), Bull Trout moved an average of 3.7 km (SD 3.4 km) at low pool and 14.1 km (SD 15.0 km) during high pool. All Bull Trout detected during low pool were detected at one of three receivers located in the lacustrine zone (Terzaghi, Diversion, and C3), and no Bull Trout were detected at receivers outside of the lacustrine zone.

We also determined the average residence time spent proximate to each receiver under low pool and full pool conditions. The time spent proximate to each receiver was highly variable. At low pool, residence times at the Terzaghi Dam receiver averaged 32.6 hours (SD 64.9 hours), while Bull Trout remained within range of Diversion for an average of 56.7 hours (SD 81 hours), and within range of C3 for 73.8 hours (SD 70.1 hours; Figure 3-15). At full pool, the average residence times at each receiver increased with distance from Terzaghi Dam, but so too did the variation. At full pool, some Bull Trout remained for multiple months at Truax, Tommy, or the MBR (possibly feeding, seeking thermal refuge, or preparing for spawning), while other Bull Trout moved past the receivers quickly while travelling through the reservoir. In contrast, no Bull Trout remained for extended periods at the receivers in the lacustrine area at full pool (Terzaghi, Diversion, and C3), and therefore the average residence times at these receivers were much shorter (Figure 3-15).

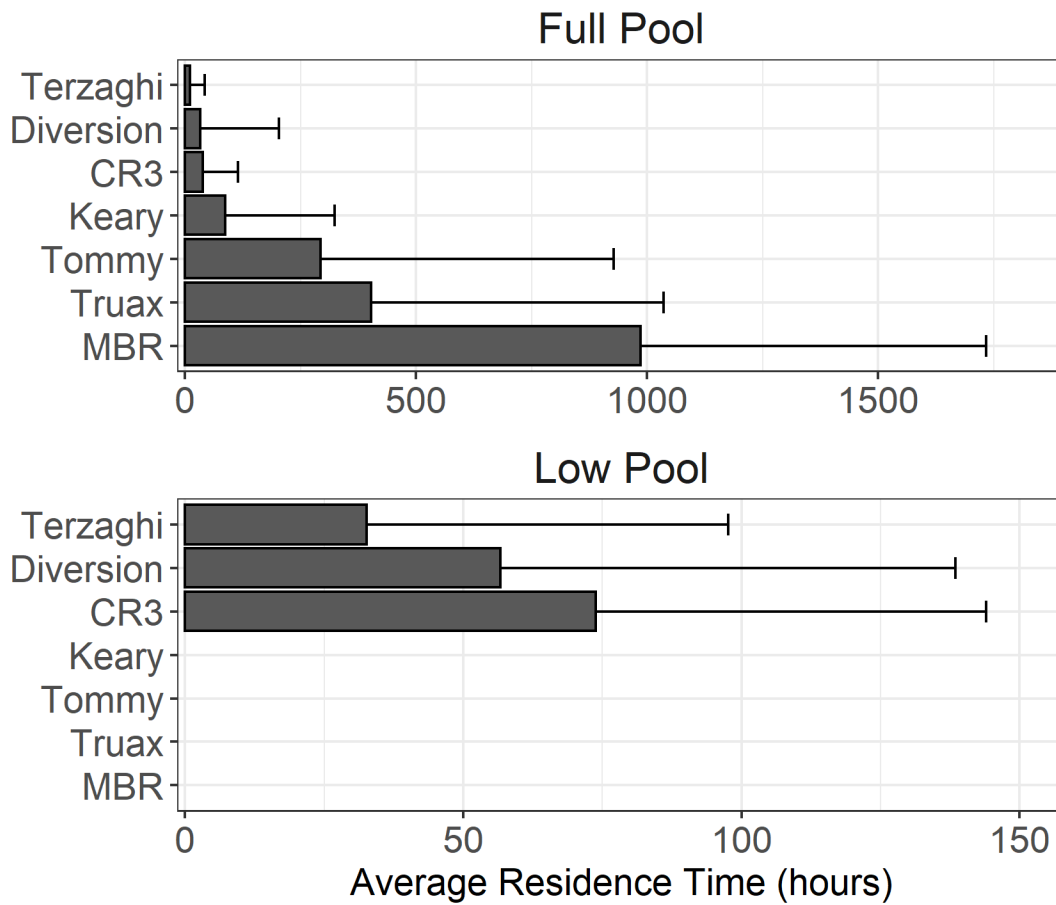
We combined the Terzaghi Dam, Diversion, and C3 receivers into a single detection station representing the lacustrine portion of the reservoir to simplify detection histories for individual tagged Bull Trout, which demonstrated diverse movement behaviours (Appendix B Figures B1 and B2). Some Bull Trout were detected on one or two receivers, while other Bull Trout moved throughout the system. For example, Tags 7021 and 7016 were detected primarily in the lacustrine area but made excursions to Keary and Tommy for possible feeding or spawning (Figure 3-16). Tags 7013 and 7022 were detected at Truax and Tag 7020 was detected at the Middle Bridge River during the high elevation period. These movement patterns suggest distinct behaviour types and spawning locations for Bull Trout in Carpenter Reservoir.

Detections at the Middle Bridge River receivers primarily occurred between August and December of 2018 (Figure 3-14), coinciding with Bull Trout spawning migrations to and from the Middle Bridge and Hurley Rivers. Of the 34 fish detected, only four (12%) were detected by the Middle Bridge River receivers. This is the lowest percentage of tagged Bull Trout detected by the Middle Bridge River receivers during acoustic monitoring in 2015 through 2019. The potential decline in Middle Bridge River detections may be related to fewer Bull Trout spawning migrations into and out of the Middle Bridge River, but may also be related to low detection ranges of receivers in the river (due to shallow water and biofouling on hydrophones).

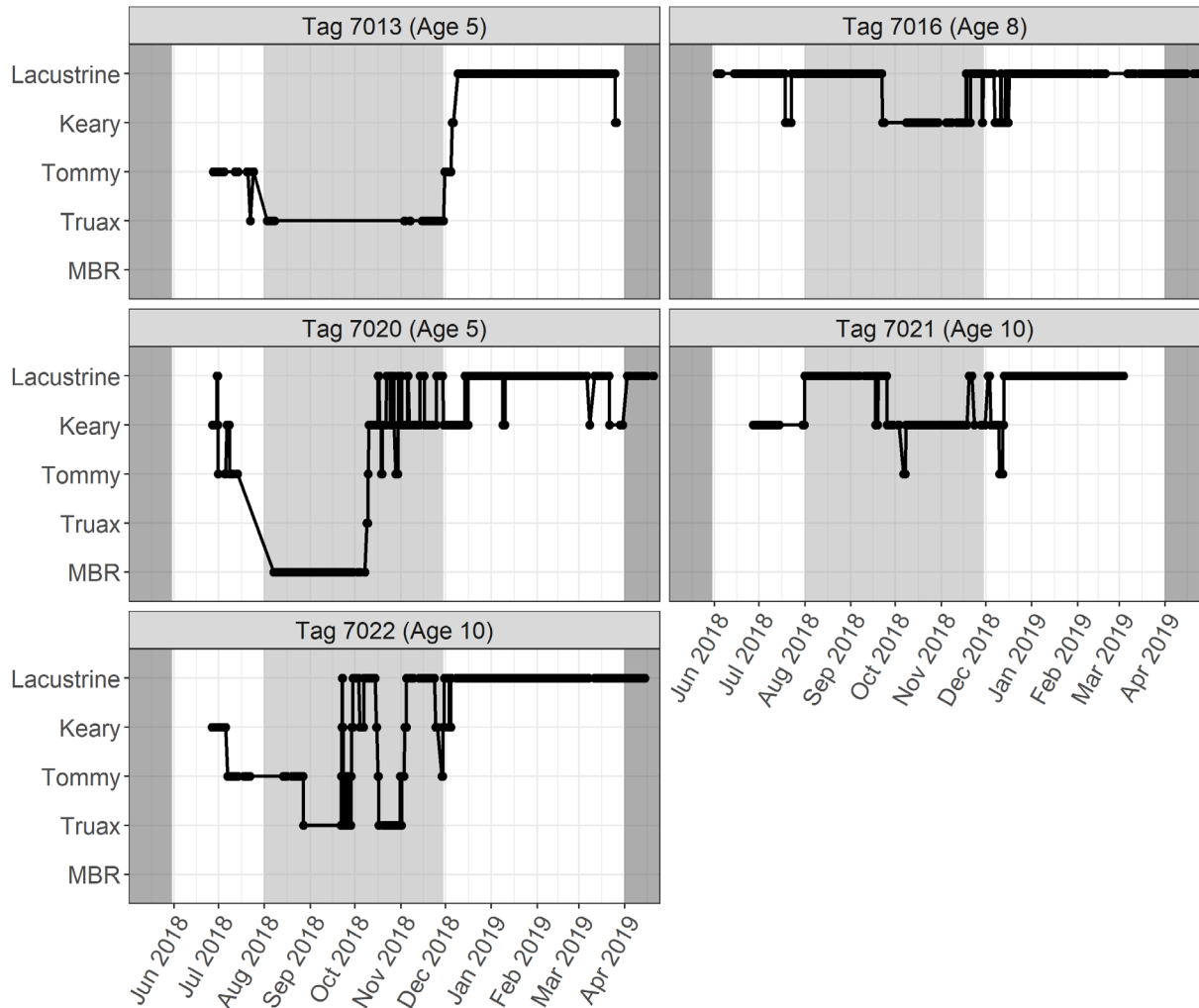




**Figure 3-14. Presence of acoustic-tagged Bull Trout at seven receiver locations in Carpenter Reservoir and in the Middle Bridge River from May 2018 to April 2019. Light shaded areas represent approximate full pool conditions, while dark grey shaded areas represent approximate low pool conditions. Red points represent the installation date of receivers in 2018.**



**Figure 3-15. Average residence time spent proximate to acoustic receivers of acoustic-tagged Bull Trout in Carpenter Reservoir from May 2018 to April 2019. Full pool is from August 1 to November 30, while low pool is from April 1 to May 31.**



**Figure 3-16. Examples of detailed detection histories of acoustic-tagged Bull Trout in Carpenter Reservoir from May 2018 to April 2019. Lines represent assumed behaviour and points are confirmed detections.**

### 3.4.3 Movement of PIT-Tagged Bull Trout

We examined the capture locations of PIT-tagged Bull Trout encountered multiple times in Carpenter Reservoir from December 2012 to September 2019. Recapture locations highlight variable behavioural patterns of Bull Trout in Carpenter Reservoir and the Middle Bridge River. Of the 323 Bull Trout captured more than once during BRGMON-4, 38% were recaptured within the same week of tagging and proximate to their release location. We removed these immediate recaptures and partitioned the remaining Bull Trout recaptures ( $n = 201$ ) into: recaptures in multiple years at the exact same location, recaptures within 10 km of their release location, and recaptures >10 km from the release location (Table 3.3).

A large number (37%) of Bull Trout recaptured in multiple years were captured at the same location each time (e.g., Tag 584851 [estimated age 7 in 2017] was angled from Truax Creek once per year

from 2015 to 2017). Of the fish captured at different locations, 35% were captured within a 10 km radius of their release location, while 28% were captured at locations >10 km apart. For example, Tag 586062 was captured two springs in a row at Keary Creek (at age 6 and age 7) via shoreline electroshocking and once in the fall (at age 6) at Truax Creek via angling. Some fish travelled large distances within or between years; for example, Tag 657920 was captured at Tyaughton Creek (~km 35, riverine habitat) in the spring of one year (at age 6) and close to Terzaghi Dam (~km 0, lacustrine habitat) in the subsequent spring. These data corroborate findings from acoustic data that Bull Trout utilize Carpenter Reservoir habitat (as opposed to Middle Bridge River habitat) to a greater degree than previously hypothesized. Particularly, it appears that Bull Trout often return to similar areas in the reservoir each year, and that Bull Trout spawning locations may be variable depending on reservoir conditions.

**Table 3.3 Percentage of fish tagged in Carpenter Reservoir that were recaptured in the same location, within 10 km of their original tagging location, and more than 10 km from their original tagging location.**

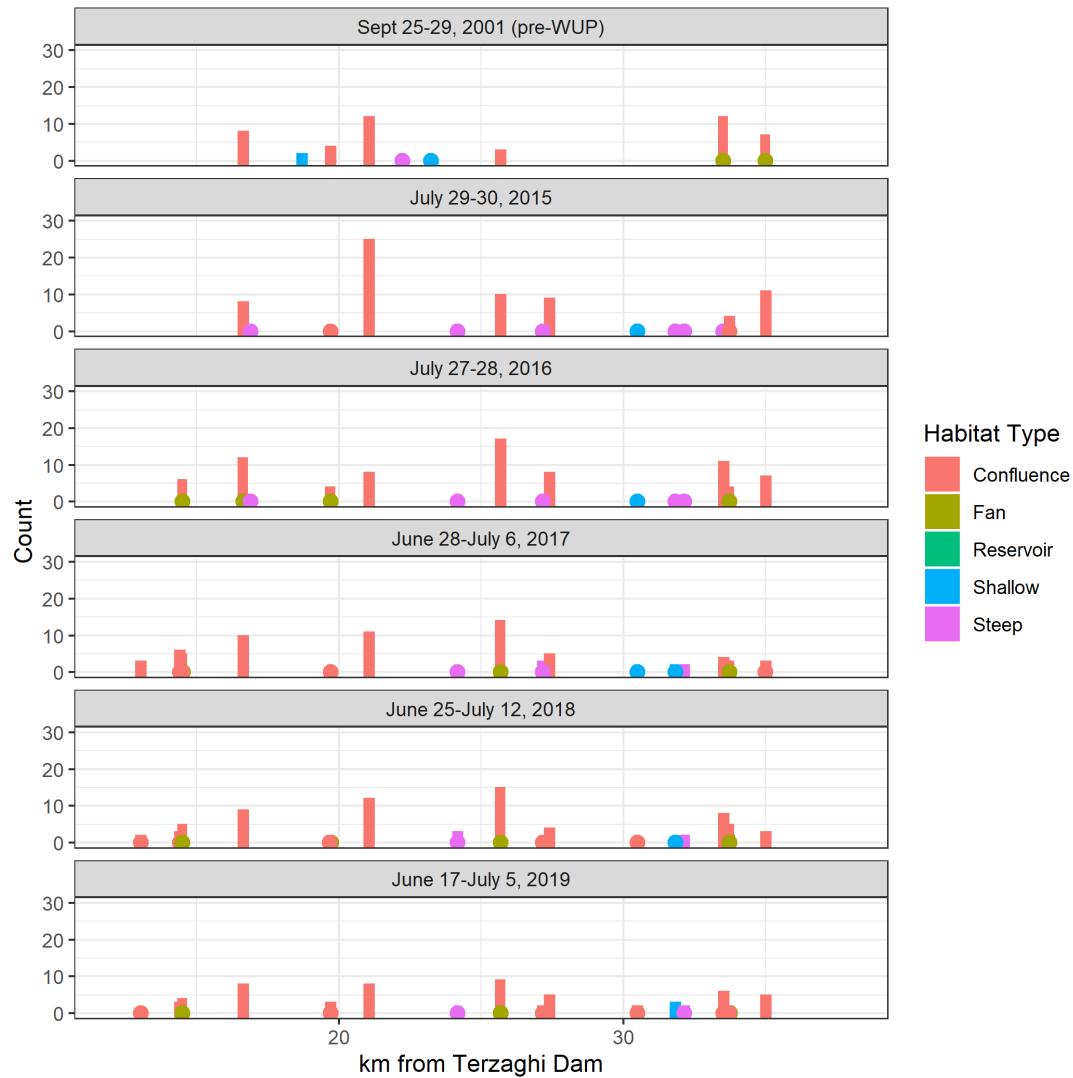
<b>Movement Category</b>	<b>Count</b>	<b>% Total</b>	<b>% Detected multiple years</b>
Caught multiple years at same location	74	23%	37%
Caught multiple years >10 km apart	57	18%	28%
Caught multiple years <10 km apart	70	21%	35%
Only recapped within same week of one	122	38%	NA

### 3.5 Shoreline Electroshocking in Carpenter Reservoir

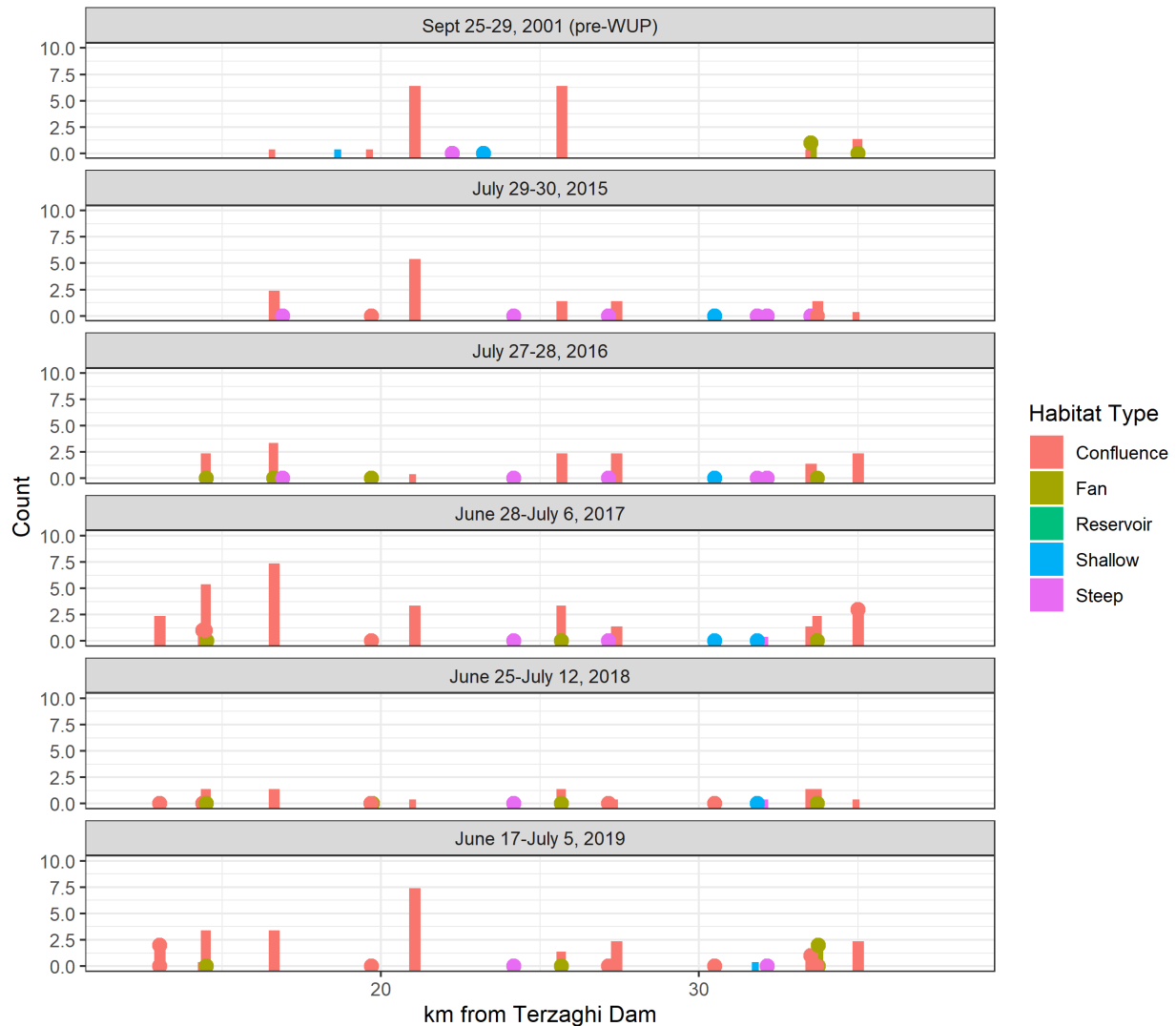
We compared shoreline electroshocking counts between a single historic survey (i.e., 2001/pre-WUP) and surveys completed during BRGMON-4 (i.e., mark-recapture electroshocking 2015 through 2019). During BRGMON-4, all electroshocking took place west of Cedarvale Creek (km 13) and east of Truax Creek (km 35), and we only draw comparisons to historic electroshocking within this area.

Bull Trout counts were relatively consistent throughout BRGMON-4 and between BRGMON-4 and the historic survey in 2001 (Figure 3-17; zero counts are represented by coloured circles) despite variable survey timing and reservoir conditions. This agrees with angling observations, where Bull Trout are consistently captured at tributary confluences from early spring through late fall. Bull Trout were also captured west of Gun Creek in 2001, suggesting Bull Trout were spawning in or migrating to the Middle Bridge River or predating on pre-spawning kokanee (kokanee spawn in the Middle Bridge River in late September).

Rainbow Trout counts were low relative to Bull Trout, but captures generally occurred in similar locations for both species, particularly in 2015 through 2019 (Figure 3-18). Almost all Rainbow Trout were captured at tributary confluences except proximate to Terzaghi Dam during historic surveys in 2001, where Rainbow Trout were captured in steep and shallow shoreline habitat. Rainbow Trout counts were low in 2018 relative to 2017 and 2019 despite similar sampling timing in the three years. Mountain Whitefish are also captured during electroshocking to obtain a subsample for length and weight analysis (see Section 3.6.3); however, we are unable to obtain reliable counts of Mountain Whitefish due to their high numbers and the priority to capture Bull Trout and Rainbow Trout.



**Figure 3-17 Bull Trout counts from Carpenter Reservoir shoreline electroshocking surveys in 2001 (pre-WUP) and 2015-2019 (BRGMON-4). Zero counts are represented by solid points.**



**Figure 3-18 Rainbow Trout counts from Carpenter Reservoir shoreline electroshocking surveys. Zero counts are represented by solid points.**

### 3.6 Biological Characteristics

Species-specific length, weight, and age data were collected to describe biological characteristics of fish species in the Carpenter Reservoir watershed (Table 3.4). Ages were determined for scales (kokanee, Rainbow Trout, Mountain Whitefish), fin rays (Bull Trout), and otoliths (accidental mortalities of all species) collected from 2012 to 2019 (Table 3.5).

**Table 3.4 Count of fish in Carpenter Reservoir sampled for biological characteristics (length, weight, and potential ageing structure) in 2013 through 2019 (all sampling occasions).**

	<b>Bull Trout</b>	<b>Rainbow Trout</b>	<b>Mountain Whitefish</b>	<b>Kokanee</b>
2013	432	92	311	3
2014	210	66	249	2
2015	369	45	86	27
2016	253	133	354	91
2017	317	202	255	18
2018	214	160	344	3
2019	209	37	214	0
Total	1,795	698	1,524	144

**Table 3.5 Ageing structures analysed in 2014 through 2018 of BRGMON-4.**

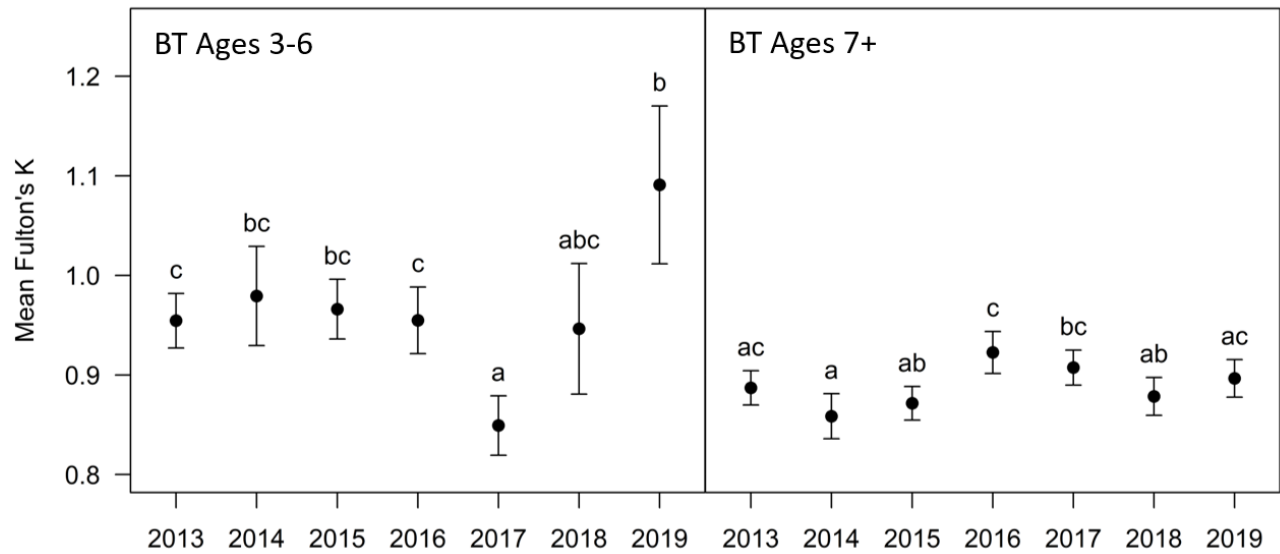
<b>Species</b>	<b>Scales Aged</b>	<b>Otoliths Aged</b>	<b>Fin Rays Aged</b>	<b>Total Structures Aged</b>
Bull Trout	9	10	74	93
Kokanee	52	0	0	52
Mountain Whitefish	221	31	0	252
Rainbow Trout	414	2	0	416

### 3.6.1 Bull Trout

Lengths and weights of Bull Trout captured in Carpenter Reservoir from 2013 to 2019 were highly correlated (adjusted R-squared for all years 0.93). The addition of a year variable to the length-weight model was not significant when compared to the intercept-only model (ANOVA; p-value = 0.02, DF = 6, F = 2.58). We examined the length-to-weight relationship and condition factor of Bull Trout with lengths between 200 mm and 350 mm, or approximately age 3 to age 6. The relationship between length and weight was highly correlated for ages 3 through 6 (adjusted R-squared 0.76) and the addition of year to the length-weight model was highly significant (ANOVA p-value <0.001, DF 6, F 11.47). Annual variation in the slope of the length-weight relationship suggests that the mean weight between years increases at a different rate with each unit increase in length. We also examined the length-weight model of Bull Trout over age 6 and the addition of year was not significant (ANOVA p-value 0.075, DF 6, F 1.92).

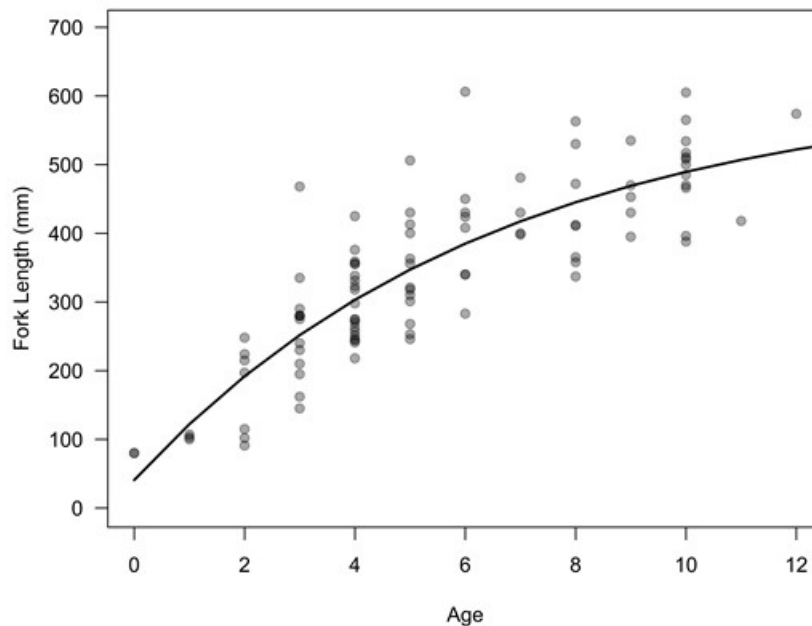
There was a significant difference between mean Fulton's condition factor in 2013 through 2019 for Bull Trout age 3 to 6 (ANOVA p-value <0.001, DF = 6, F = 9.52), and a Tukey's HSD test indicated that although condition of age 3-6 Bull Trout is variable, condition in 2017 may have been lower relative to most years, while condition in 2019 may have been high relative to other years (Figure 3-19). We also examined the change in condition of Bull Trout ages 7 and above captured in the reservoir each year (Figure 3-19). For Bull Trout ages 7 and above, annual condition was less variable, suggesting larger fish are undergoing reduced growth and are less affected by reservoir conditions.

A total of 93 Bull Trout have been aged by IFR (otoliths and juvenile scales) and North South Consultants (fin rays; Table 3.5), and estimated Bull Trout ages ranged from 0 to 12 years. A von Bertalanffy growth model was successfully fit to Bull Trout length and age data, which shows an asymptotic length of 613 mm and fasted adult growth in ages 3 to 6 (Figure 3-20, Table 3.6). A Bull Trout ALK was used to estimate the proportion of Bull Trout in each age class and to estimate ages of unaged fish.



**Figure 3-19 Mean annual condition factor (Fulton's K) and 95% CI for Bull Trout in Carpenter Reservoir. Means with the same significance letter are statistically equal.**





**Figure 3-20 Von Bertalanffy growth model for Bull Trout fork length (mm) and observed ages (all study years combined). Transparency shows point overlap.**

**Table 3.6 Von Bertalanffy parameter estimates for Bull Trout (all study years combined), where  $L_{inf}$  is the asymptotic growth,  $K$  is the growth coefficient, and  $T_0$  is the time at which length is theoretically zero.**

Parameter	Estimate	SE
$L_{inf}$	612.58	0.71
$K$	0.15	0.00
$T_0$	-0.50	0.00

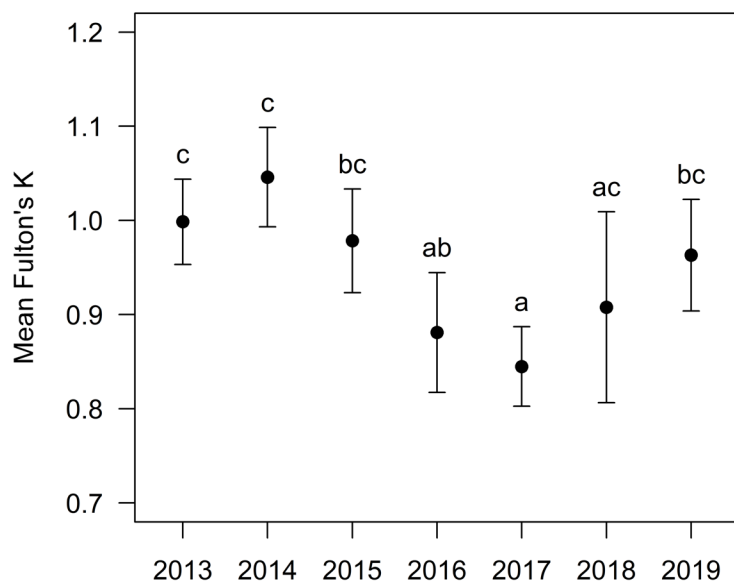
### 3.6.2 Rainbow Trout

Lengths and weights of Rainbow Trout captured only in Carpenter Reservoir in 2013 through 2019 were highly correlated (adjusted R-squared all years 0.91), and the addition of a year variable to the length-weight model was highly significant when compared to the intercept-only model (ANOVA p-value <0.001, DF 6, F 14.07). An ANOVA of annual condition for Rainbow Trout captured only in Carpenter Reservoir indicated significant differences in mean Fulton's condition factor (Figure 3-21; p-value <0.001, DF = 6, F = 7.94), and a Tukey's HSD indicated that although condition is variable, there appears to have been a slight decrease from 2016 to 2018, with somewhat higher condition in 2013 through 2015 and 2019. For Rainbow Trout caught only in the tributaries (during

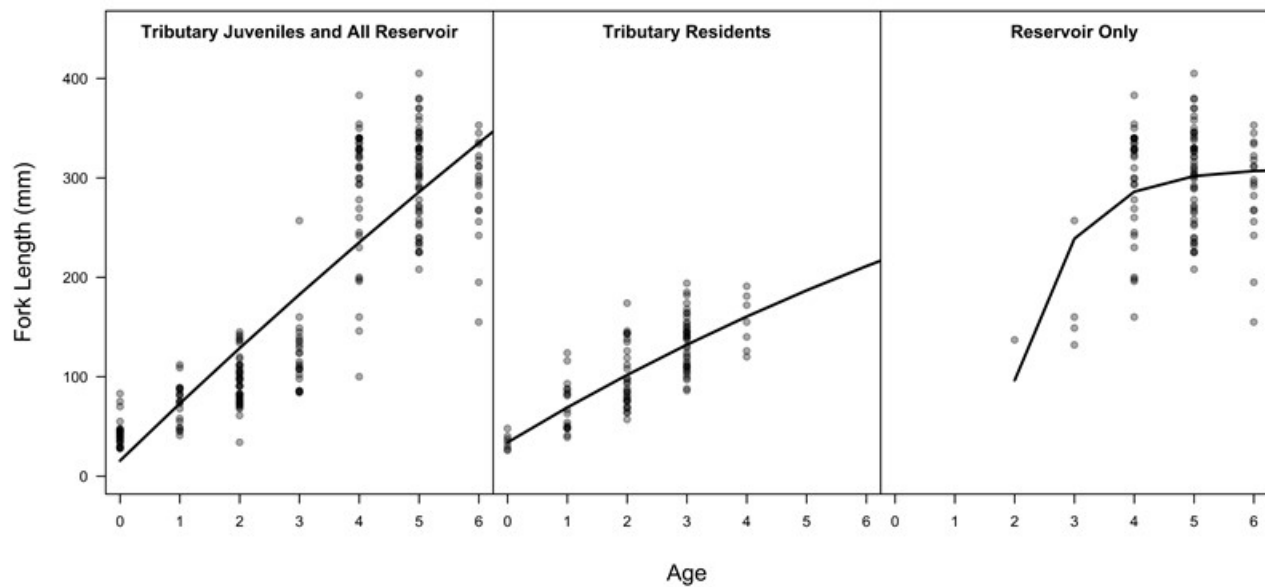
electroshocking in 2016 through 2018), year was not a significant addition to the length-weight relationship (ANOVA p-value 0.68, DF 2, F 0.39), and an ANOVA of mean condition factor was not significant (p-value 0.18, DF 2, F 1.73).

Rainbow Trout were generally younger in the tributaries than in the reservoir, which may bias comparisons of condition factor. The oldest tributary residents were age 4 and very few juveniles were captured in the reservoir, either because no juveniles were present in the reservoir, or they were not vulnerable to current capture methods. We compared condition factors of only age 3 and age 4 Rainbow Trout captured in the reservoir (n = 51) and in the tributaries (n = 37) between 2016 through 2018 (the years during which tributary sampling occurred). Overall, Fulton's condition was greater for Rainbow Trout ages 3 and 4 in the tributaries compared to in the reservoir (2016 to 2018 only; 2-way ANOVA p-value <0.0001, DF 1, F 72.00), and year was not a significant addition to the ANOVA (year coefficient p-value 0.060, DF 2, F 2.90).

A total of 414 Rainbow Trout have been aged by IFR (otoliths and scales; Table 3.5), and Rainbow Trout ages range from 0 to 6 years. We fit three von Bertalanffy growth models to Rainbow Trout length and age data separated into: fish captured in the reservoir (reservoir only), stream-residents captured upstream of the Marshall Creek waterfall (tributary residents), and a combination of tributary juveniles and all reservoir captures (Figure 3-22, Table 3.7). The von Bertalanffy models highlight variation in growth of the different categories of Rainbow Trout and indicate that growth is slower in the tributaries. An ALK using data from tributary juveniles and all reservoir captures was used to estimate the proportion of Rainbow Trout in each age class and to estimate ages for unaged fish.



**Figure 3-21 Mean annual condition factor (with 95% CI) for Rainbow Trout (Carpenter Reservoir only). Means with the same significance letter are statistically equal.**



**Figure 3-22** Von Bertalanffy growth models for Rainbow Trout fork length (mm) and observed ages separated by life-history type (all study years combined). Transparency shows point overlap.

**Table 3.7** Von Bertalanffy parameter estimates for Rainbow Trout (all study years combined) separated by life-history type, where  $L_{inf}$  is the asymptotic growth,  $K$  is the growth coefficient, and  $T_0$  is the time at which length is theoretically zero.

Parameter	Tributary Juveniles and All Reservoir		Tributary Residents Estimate		Reservoir Only	
	Estimate	SE	Estimate	SE	Estimate	SE
$L_{inf}$	1,911.12	1.08	533.71	16.65	309.57	0.12
$K$	0.03	0.00	0.07	0.00	1.10	0.00
$T_0$	-0.27	0.00	-0.90	0.01	1.66	0.00

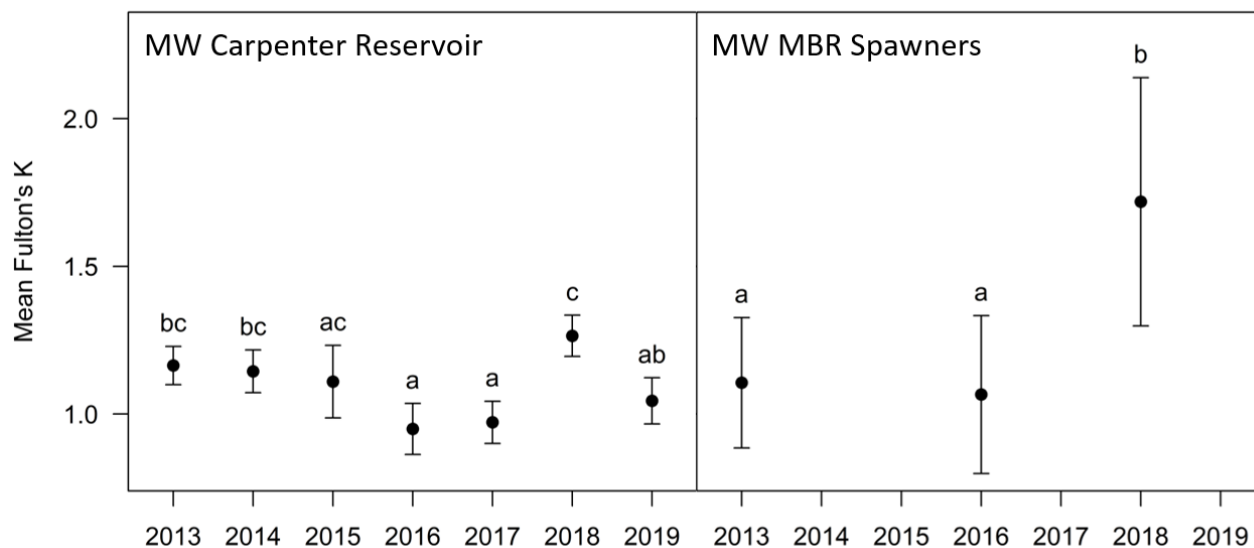
### 3.6.3 Mountain Whitefish

Lengths and weights of Mountain Whitefish captured in Carpenter Reservoir in 2013 through 2019 were highly correlated (adjusted R-squared all years 0.94), and the addition of a year variable to the length-weight model was significant when compared to the intercept-only model (ANOVA p-value <0.001, DF 6, 43.14).

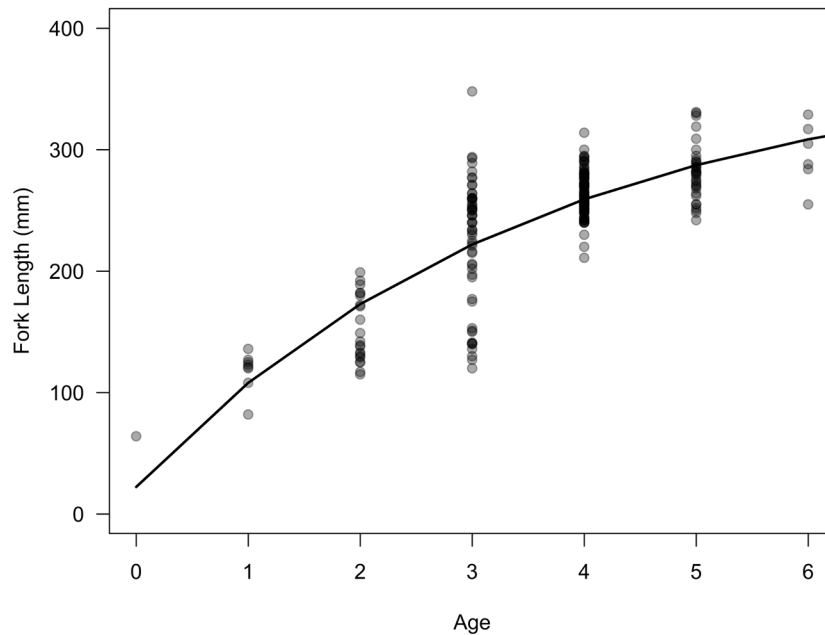
There was a significant difference in mean Fulton's condition factor in 2013 through 2019 for Mountain Whitefish captured in Carpenter Reservoir (ANOVA p-value <0.001, DF = 6, F = 43.70). A

Tukey's HSD test showed that although there is substantial variation in Mountain Whitefish condition factor, there is evidence that condition was higher in 2018 relative to 2016, 2017, and 2019 (Figure 3-23). We also compared Fulton's condition factor for Mountain Whitefish spawners captured in the Middle Bridge River (ages 3 to 5) during winter angling in 2013, 2016, and 2019 (Figure 3-23). There was a significant difference in condition of Mountain Whitefish captured in the Middle Bridge River (ANOVA p-value 0.024, DF = 2, F = 3.74), and a Tukey's HSD suggested condition in 2018 was greater than in 2013 and 2016.

A total of 221 Mountain Whitefish have been aged by IFR (otoliths and scales; Table 3.5), and estimated Mountain Whitefish ages ranged from 1 to 6 years. A von Bertalanffy growth model was fit to Mountain Whitefish length and age data (Figure 3-24, Table 3.8). A Mountain Whitefish ALK was used to estimate the proportion of Mountain Whitefish in each age class and to estimate ages for unaged fish.



**Figure 3-23 Mean annual condition factor (with 95% CI) for Mountain Whitefish in Carpenter Reservoir and the Middle Bridge River (MBR). Means with the same significance letter are statistically equal.**



**Figure 3-24** Von Bertalanffy growth model for Mountain Whitefish fork length (mm) and observed ages (all study years combined). Transparency shows point overlap.

**Table 3.8** Von Bertalanffy parameter estimates for Mountain Whitefish (all study years combined), where  $L_{inf}$  is the asymptotic growth,  $K$  is the growth coefficient, and  $T_0$  is the time at which length is theoretically zero.

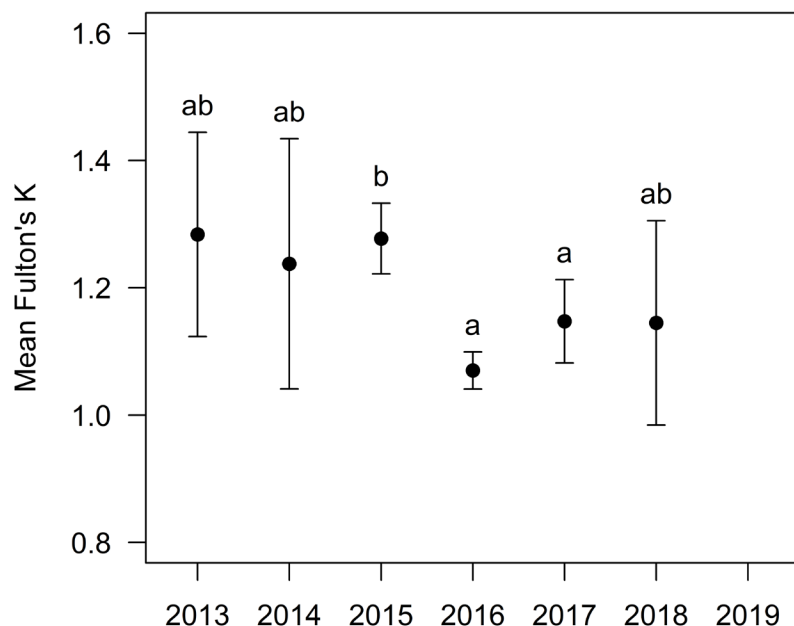
Parameter	Estimate	SE
$L_{inf}$	374.86	0.66
$K$	0.28	0.00
$T_0$	-0.22	0.01

### 3.6.4 Kokanee

No kokanee were captured in Carpenter Reservoir during 2019 monitoring; length and weight modelling results are presented from 2018. Lengths and weights of kokanee captured in Carpenter Reservoir in 2013 through 2018 were highly correlated (adjusted R-squared all years 0.90), and the addition of a year variable to the length-weight model was significant when compared to the intercept-only model (ANOVA p-value <0.001, DF 5, F 12.52).

An ANOVA of annual mean Fulton's condition factor was significant (p-value <0.001, DF 5, F 9.78), and a Tukey's HSD test indicated that condition in 2016 through 2018 was lower (with some overlap) than condition in 2013 through 2015 (Figure 3-25).

A total of 52 kokanee have been aged by IFR (scales; Table 3.5). Estimated kokanee ages ranged from 2 to 4 years. A von Bertalanffy growth model was not fit to kokanee length-at-age data due to the lack of juvenile age and length data.



**Figure 3-25 Mean annual condition factor (with 95% CI) for kokanee in Carpenter Reservoir. Means with the same significance letter are statistically equal.**

### 3.7 Tributary Surveys in the Carpenter Reservoir Watershed

#### 3.7.1 Kokanee spawner assessments

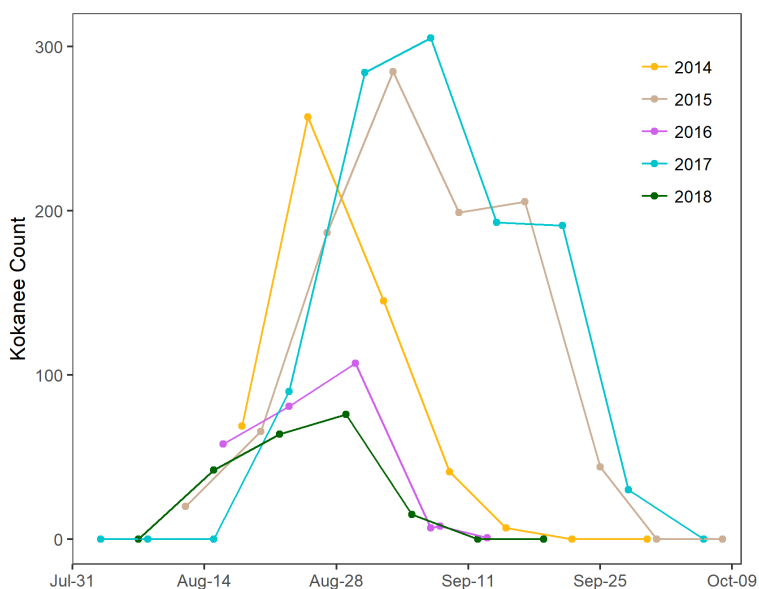
Kokanee spawner assessments were completed annually in Carpenter Reservoir index tributaries from 2014 to 2019. In 2019, no kokanee spawners were observed, despite stream assessments occurring weekly from August 1 to September 17. In addition to the five index tributaries (Girl Creek, Macdonald Creek, Marshall Creek, Sucker Creek, and Truax Creek) visual surveys were completed in Keary Creek, Nosebag Creek, and Tommy Creek on August 27, 2019 (during typical peak kokanee spawning). These three additional tributaries have areas of optimal kokanee spawning habitat (similar in area to the index tributaries) but are not included in weekly assessments because they are only accessible by boat.

Categorical measures of water quality and discharge were assessed during each survey but did not appear to influence survey effectiveness. We also recorded the weekly stream surveys using a handheld GPS to quantify the stream area at risk of inundation. Reservoir elevation often rises throughout the kokanee spawning period, resulting in a high risk of inundation for any redds located

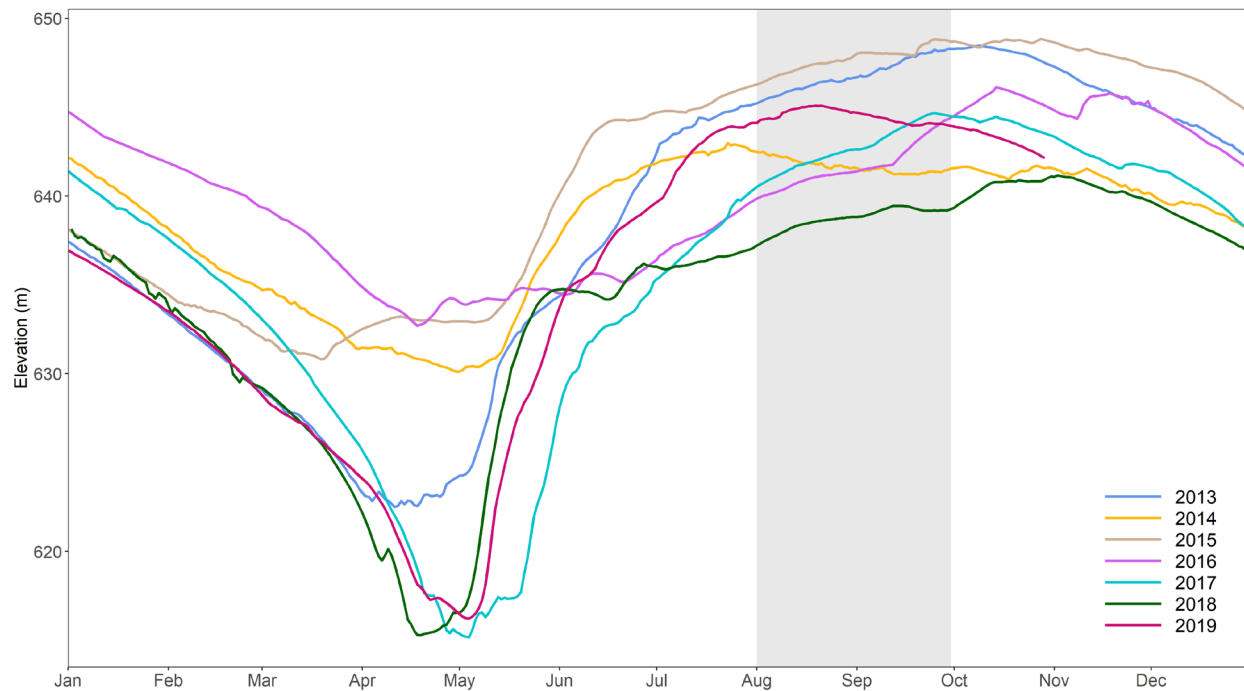
beneath the maximum elevation boundary. Since 2014, although kokanee have been observed migrating within the drawdown zone, we have seen very little evidence of spawning behaviour or redd digging in this area, suggesting the risk of redd inundation is very low. Also, in 2019 the reservoir peaked in mid-August and decreased in elevation through September, resulting in zero risk of redd inundation for any redds that may have been present.

Without observing spawners, we could not determine the hatch timing of kokanee for 2019; however, we estimated the 2017-2018 hatch timing for Macdonald Creek (lake fed) and Truax Creek (snowmelt fed) using a 50% hatch ATU of 680 (at 7.5°C; DFO 1997) and continuous temperature data from the 2017-2018 winter period (Figure 3-28). We also calculated the 50% hatch dates for the Middle Bridge River, where kokanee are known to spawn; however, migration timing in the Middle Bridge River is uncertain because kokanee cannot be observed due to high turbidity.

Peak hatch dates were highly variable for kokanee in Truax Creek, Macdonald Creek, and the Middle Bridge River due to the large ATU requirements for kokanee and temperature differences among the tributaries. Warmer and more stable temperatures in the Middle Bridge River (regulated by BC Hydro) resulted in earlier estimated peak hatch dates and a relatively short hatch window (Figure 3-28). Macdonald Creek is also relatively warm compared to snowmelt-fed creeks, but its unregulated nature results in temperatures that are less stable and colder than the Middle Bridge River. The 50% hatch period for Macdonald Creek was estimated to begin in October but the hatching window extended over a 6-month period. Truax Creek is snowmelt-fed and colder than the other tributaries, resulting in a later estimated hatching period and a peak 50% hatch date in early June.

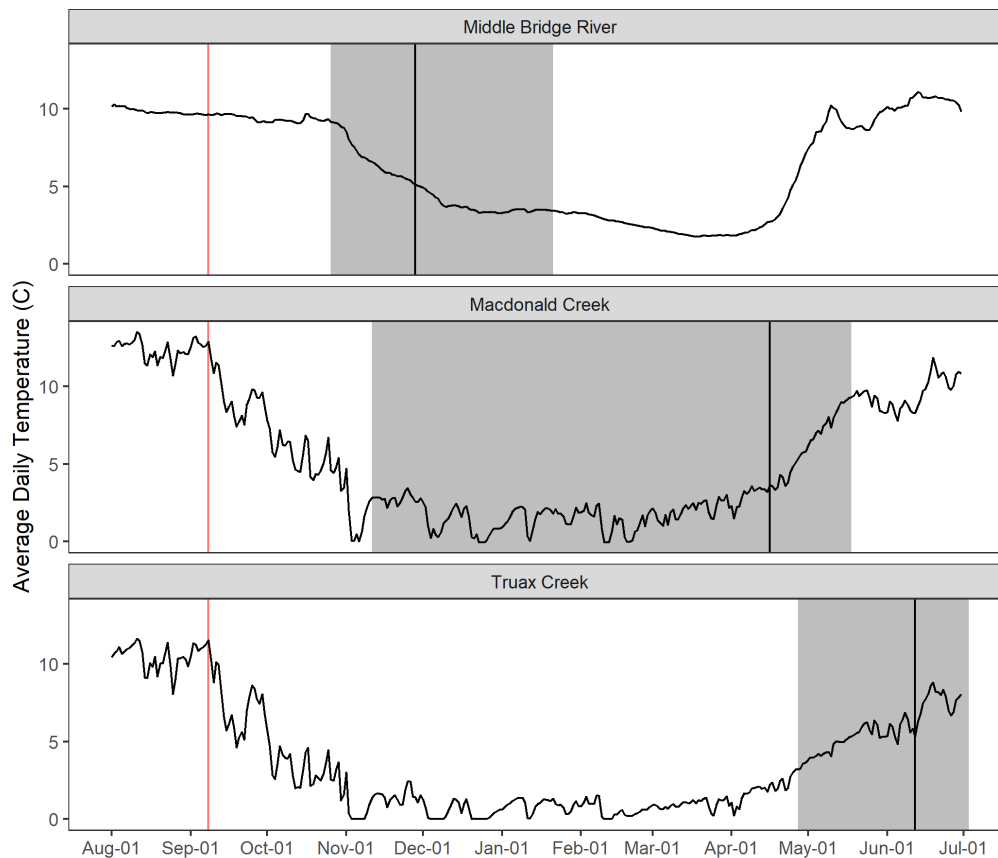


**Figure 3-26 Counts of kokanee in Carpenter Reservoir tributaries (Truax, Girl, Macdonald, Sucker, and Marshall Creeks combined) in 2014 to 2018. No kokanee were observed in 2019.**



**Figure 3-27 Carpenter Reservoir elevation (2013 through 2019) during the approximate kokanee spawning window (August 1 to September 31; grey band) in the Carpenter Reservoir.**

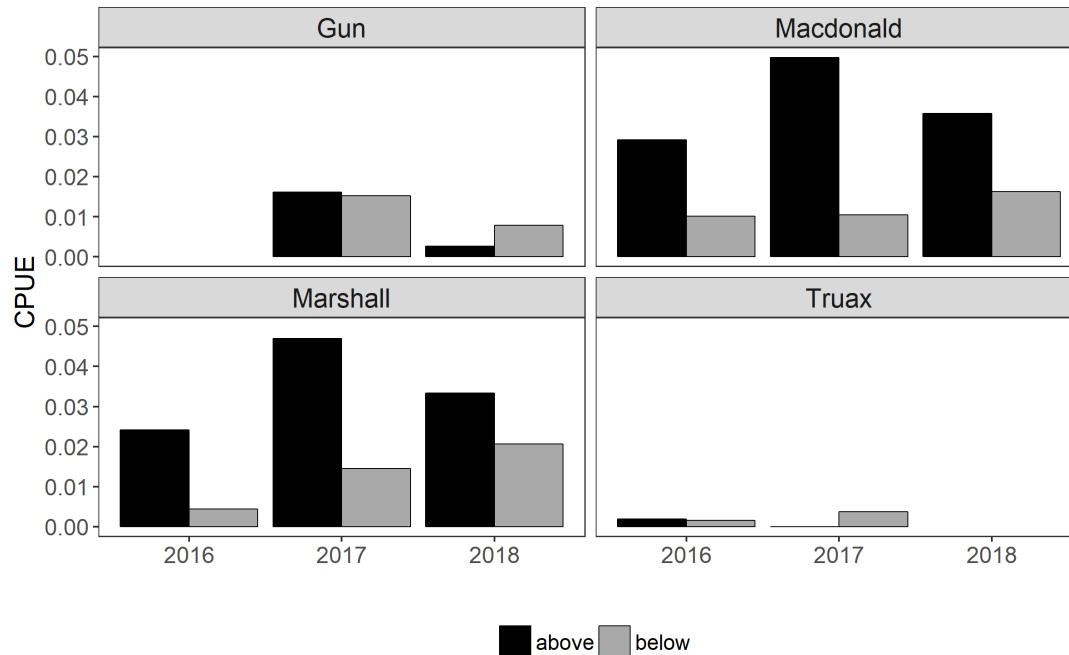




**Figure 3-28 Kokanee peak 50% hatch date (black line) and estimated 50% hatch window (shaded grey area). Hatching dates were calculated using the peak kokanee migration date from 2018 (red line) and the maximum and minimum extent of the migration (not shown).**

### 3.7.2 Tributary Electroshocking Assessment in Carpenter Reservoir Tributaries

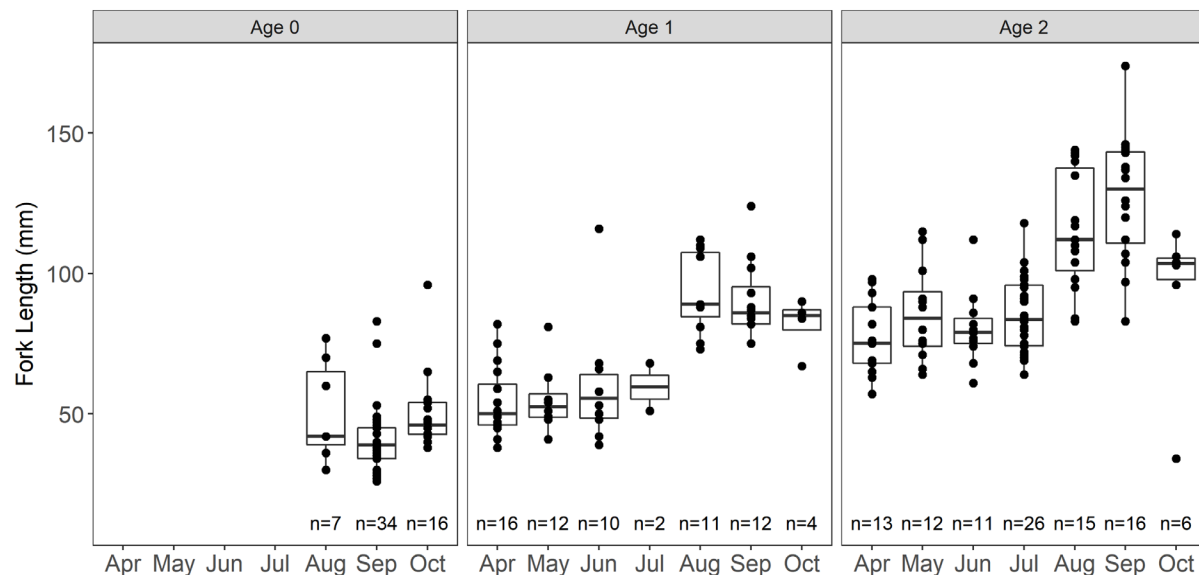
Monthly tributary electroshocking was performed in Macdonald Creek, Marshall Creek, and Gun Creek from 2016 through 2018 to assess Rainbow Trout spawning and juvenile growth (see details in Putt et al. 2019). Rainbow Trout and sculpin were the most frequently captured species, with smaller catches of Bull Trout, kokanee, and Mountain Whitefish. Rainbow Trout successfully spawned in all tributaries, as evidenced by the presence of young-of-year Rainbow Trout in July and August. Rainbow Trout ATU calculations (390 days at 10°C) in 2018 predicted peak 50% hatch would occur in late July in the three tributaries, which agreed with our observed young-of-year catches. Juvenile Rainbow Trout catch rates were higher above the maximum pool elevation compared to below (Figure 3-29), particularly in Marshall Creek and Macdonald Creek, which have tributary-resident Rainbow Trout populations.



**Figure 3-29 Annual captures of Rainbow Trout above and below the maximum elevation boundary in Gun (not sampled in 2016), Macdonald, Marshall, and Truax Creeks (not sampled in 2018).**

### **3.7.2.1 Rainbow Trout Growth**

We compiled length and age data from tributary electroshocking in 2016 through 2018 to examine juvenile Rainbow Trout growth (Figure 3-30). Mean length-at-age for age-0 to age-2 Rainbow Trout growth was variable, but a positive trend in fork length was observed from April to October. We used linear modelling to estimate the average growth per month for both age-1 and age-2 Rainbow Trout in all Carpenter Reservoir tributaries. Pooling data from all years, model slopes predicted monthly growth from April to October to be 6.3 mm for age-1 Rainbow Trout (adjusted R-squared 0.56) and 7.6 mm for age-2 Rainbow Trout (adjusted R-squared 0.63). For age 1 Rainbow Trout, sample sizes permitted us to examine the effect of year on the growth model (for all tributaries pooled); an ANOVA assessing the significance of a year component suggested the addition of year was not a significant improvement to the results (p-value = 0.05, DF = 2, F = 3.76).



**Figure 3-30 Length boxplots of age-0 to age-2 Rainbow Trout captured in Macdonald, Marshall, Truax, and Gun Creeks during 2016 to 2018 tributary electroshocking.**

## 4 Discussion

The primary objectives of BRGMON-4 are to assess the life history, biological characteristics, abundance, and composition of the fish community in Carpenter Reservoir and the Middle Bridge River and determine how reservoir operations affect fish populations. Monitoring in 2019 builds on data and understanding gained from 2012 to 2018 and helps to direct future monitoring.

### 4.1 Carpenter Reservoir Operating Parameters

Operating parameters in Carpenter Reservoir were variable from 2012 to 2019, particularly minimum and maximum elevation and the rate of reservoir filling in the spring. Since 2017, minimum elevations have been low relative to previous monitoring years due to modified operations in Downton Reservoir. However, despite similar minimum elevations, rates of filling and the maximum elevations were variable, resulting in unique fish habitat conditions in these years (and all years of BRGMON-4).

We focus on two time periods to examine the effect of reservoir elevation on fish in Carpenter Reservoir: the beginning of April, and July through October. Modelling results from BRGMON-10 suggest reservoir elevation in early April predict productivity during the reservoir growing season (Limnotek 2018). In years with low April elevation, growing season productivity is typically lower due to a more turbid surface layer becoming isolated during thermal stratification. Maximum summer elevation in July through October provides an indication of habitat quantity and quality in the reservoir. Low summer elevations reduce habitat volume in two ways: first, the physical volume of the reservoir (depth, length, and width) is lower, and second, the number of large, cool tributaries that flow directly into the reservoir is reduced (thereby eliminating clear cool confluences with optimal Bull Trout habitat and foraging conditions). According to these indicators, growing season

productivity was low in 2019 and habitat quantity at maximum pool was high relative to all other monitoring years. The implications of reservoir elevations are discussed below in the context of the management questions.

## **4.2 BRGMON-4 Management Questions**

### **4.2.1 Management Question 1: What are the basic biological characteristics of parameters of fish populations in Carpenter Reservoir and Middle Bridge River?**

The Carpenter Reservoir fish community consists of Bull Trout, Rainbow Trout, Mountain Whitefish, kokanee, Redside Shiner, Bridgelip Sucker, and Coastrange Sculpin. Bull Trout is the dominant predator in the reservoir and likely the main piscivorous fish. Large Rainbow Trout sometimes consume small fish; however, given the small size of Rainbow Trout in Carpenter Reservoir (generally <400 mm) and the relatively low density of juvenile fish and minnows, Rainbow Trout likely subsist primary on insects and crustacea such as daphnia. Catch data from BRGMON-4 suggest Carpenter Reservoir is currently dominated by Bull Trout and Mountain Whitefish. This is not surprising given that Kokanee and Rainbow Trout rely heavily on lacustrine habitat, which is small and inconsistent in Carpenter Reservoir due to elevation fluctuations. In contrast, Bull Trout and Mountain Whitefish are generally more adaptable to riverine conditions and therefore less constricted at low reservoir elevations.

Fish distribution and habitat use varies in Carpenter Reservoir according to season and the habitat available as a result of reservoir elevation. In the summer at full pool (i.e., when Carpenter Reservoir most resembles a lake ecosystem), gill netting and electroshocking results suggest kokanee and Rainbow Trout inhabit the thermally-stratified, lacustrine portion of the reservoir proximate to Terzaghi Dam. This portion of the reservoir offers thermal refuge from warm surface waters and has higher densities of zooplankton prey relative to eastern areas (Limnotek 2018). At full pool, Bull Trout and Mountain Whitefish can be found throughout the margins of the reservoir, but generally congregate at large, cool tributary inflows (for both thermal refuge and foraging opportunities), many of which are near the western boundary of the reservoir. CPUE data and Bull Trout movement data (from acoustic tagging) suggest Bull Trout distributions shift westward in the reservoir as elevations increase in early summer and western habitats become more available.

Kokanee are observed spawning in Carpenter Reservoir tributaries in August and September, and catch data suggest they remain in the eastern lacustrine habitat at all other times of the year. The volume of lacustrine habitat decreases at low pool in the spring, resulting in reduced habitat availability and increased competition because kokanee are not able to utilize more western riverine habitat (according to habitat preferences and BRGMON-4 catch data, McPhail 2007). Kokanee spawn when Carpenter Reservoir is nearing full pool, and low maximum elevations may make it more difficult to access spawning tributaries in western areas of the reservoir, including the Middle Bridge River. In contrast, Rainbow Trout are more distributed throughout the reservoir in the spring as they migrate towards tributaries in preparation of spawning. This correlation between minimum elevation and spawning timing suggests Rainbow Trout may be less vulnerable to reduced lacustrine habitat at extreme drawdowns.

In contrast to kokanee and Rainbow Trout, Bull Trout and Mountain Whitefish do not rely on lacustrine habitat and catch data indicate are distributed throughout the reservoir and the Middle Bridge River at minimum pool in the spring. Despite their broader habitat preferences, Bull Trout and Mountain Whitefish are still vulnerable to extreme reservoir drawdowns. Habitat in the drawdown region of the reservoir is of relatively poor quality as it is highly turbid, has virtually no cover or shoreline vegetation, and offers limited foraging opportunities. Bull Trout may also be indirectly affected by extreme drawdowns if the drawdowns result in a decrease in abundance or condition of prey species (i.e., juvenile Rainbow Trout and kokanee and Redside Shiners).

Productivity and predator-prey interactions in Carpenter Reservoir likely affect the size distributions of fish in the reservoir. Carpenter Reservoir is classified as an oligotrophic water body with relatively low productivity (Limnotek 2018). The Bull Trout community in Carpenter Reservoir is characterized by large numbers of mid-sized fish (~300-400 mm in length), with relatively few large, older individuals (>400 mm). This Bull Trout size distribution is likely related to low productivity and corresponding low prey densities in the reservoir. Rainbow Trout in the reservoir are also small relative to nearby systems, which may be related to low reservoir productivity and cooler rearing conditions in tributaries. Rainbow Trout spawning tributaries are cold and peak spawning occurs later in the year relative to typical spawn timings for Rainbow Trout (McPhail 2007). Scale ageing data from Carpenter Reservoir tributaries suggest that juvenile Rainbow Trout undergo almost negligible growth during the winter of their first year. In addition, tributary electroshocking data indicates Rainbow Trout may rear for multiple years in the tributaries (as opposed to leaving following their first winter), which would further reduce juvenile growth rates and decrease the mean size-at-maturity of Rainbow Trout in Carpenter Reservoir.

Length, weight, and age data have been collected annually to develop age-length-keys and growth models for Bull Trout, Rainbow Trout, Mountain Whitefish, and kokanee. ALKs and von Bertalanffy growth models have successfully been developed for Bull Trout and Mountain Whitefish, which can be compared to models from other systems, and to growth models that may be developed for Carpenter Reservoir under potential future monitoring programs. For example, we estimated that the asymptotic length of Bull Trout in Carpenter Reservoir is 605 mm, while in Seton Lake asymptotic length was estimated to be 695 mm (Burnett and Parkinson 2018), suggesting growth is slower in Carpenter Reservoir relative to Seton Lake. Similarly, the asymptotic length of Mountain Whitefish in Carpenter Reservoir and the Middle Bridge River is estimated to be 375 mm, but Mountain Whitefish in other systems are reported to have higher asymptotic lengths (Columbia River – 400 mm: Golder Associates Ltd., Okanagan Nation Alliance, and Poisson Consulting Ltd. 2016, Madison River Montana – 450 mm: Boyer et al. 2017). Insufficient data are available to model kokanee length and age, and almost all kokanee captures consist of mature individuals captured at tributary confluences prior to spawning migrations. Pre-spawning fork lengths provide an indication of the size-at-maturity of kokanee in Carpenter Reservoir, which can be compared to other systems or future monitoring programs in lieu of growth models.

Carpenter Reservoir Rainbow Trout age and growth modelling was challenging due to the unique growth characteristics of Rainbow Trout in rearing tributaries and in the reservoir. Rainbow Trout undergo almost no growth during their first winter due to the cold temperatures in rearing

tributaries (i.e., often approaching zero for extended periods during the winter). Typically, Rainbow Trout migrate to rear in lake ecosystems after one winter (McPhail 2007); however, Rainbow Trout may rear in Carpenter Reservoir tributaries for multiple years before migrating to the reservoir. Rainbow Trout scales are difficult to age due to slow growth rates during tributary rearing; growth rings are very close together and winter growth is almost indistinguishable from summer growth. Once Rainbow Trout migrate to the warmer reservoir habitat their growth rate increases; however, this period of rapid growth occurs at different ages in Carpenter Reservoir depending on how many years the individual reared in the tributary environment. Because Rainbow Trout migrate to the reservoir at different ages, there is substantial overlap in fork length distributions for mid-aged Rainbow Trout. This overlap combined with low captures of large Rainbow Trout make it difficult to model growth rates in the reservoir.

#### **4.2.2 Management Question 2: Will the selected alternative result in positive, negative, or neutral impact on abundance and diversity of fish populations?**

During the WUP alternative, N2-2P, the management of elevations in Carpenter Reservoir and Downton Reservoir were ranked lower than other priorities in the Bridge River system that had greater environmental and cultural significance. Constraints on minimum and maximum reservoir elevation remained at 606.6 m and 651.1 m, respectively (BC Hydro 2011), and the system was managed to maintain these parameters. N2-2P was followed until 2015, then in 2016 Modified Operations were implemented to address safety risks at Lajoie Dam. Although Modified Operations did not change the constraints on Carpenter Reservoir elevation, reservoir elevations were affected due to changes in constraints on Downton Reservoir elevation. It is challenging to determine whether N2-2P affected fish populations in Carpenter Reservoir because of the highly variable nature of elevations in the reservoir and because of a lack of consistent historic fish population data. Elevation constraints are very broad for the reservoir, and Carpenter Reservoir has been operating within the WUP targets since the mid 1980s. Elevations in the reservoir vary due to management priorities in other areas of the system, and due to natural environmental fluctuations (e.g., annual freshet conditions). These sources of variation are difficult to isolate, and combined with the lag time between operational decisions and population-level effects, make it challenging to determine how reservoir management affects fish populations.

A substantial barrier towards determining the effect of N2-2P on Carpenter Reservoir fish populations is the lack of consistent pre-WUP data. Several historic studies (generally consisting of one year or one sampling event) provide insight into the status of fish populations (e.g., shoreline electroshocking, gill netting, spawning surveys, and hydroacoustic surveys; see Appendix A). The short duration of historic surveys and the highly variable nature of reservoir elevations before and after N2-2P suggest historic surveys are not an accurate representation of average conditions prior to N2-2P and cannot be compared to post-WUP data collected during BRGMON-4.

Results from BRGMON-10 suggest reservoir elevation can affect fish habitat and food availability (Limnotek 2018), and when comparing reservoir parameters between pre- and post-WUP periods (i.e., 2002-2011 vs 2012-2019) we observed a significant trend towards lower average summer elevation in the current Modified Operations scenario relative to the pre-WUP and N2-2P periods.

This trend was driven by Modified Operations in 2016 through 2019, suggesting N2-2P may have had a neutral effect on fish populations, but Modified Operations have a more pronounced negative affect.

#### **4.2.3 Management Question 3: Which are the key operating parameters that contribute to reduced or improved productivity of fish populations in Carpenter Reservoir and Middle Bridge River?**

Quantitatively linking operating parameters to fish productivity in Carpenter Reservoir and the Middle Bridge River is difficult due to the size of Carpenter Reservoir, the large degree of variation in reservoir elevation, and the lag time between reservoir elevations and population-level effects to fish. Despite these constraints, preliminary data and insights from BRGMON-4 suggest fish populations in the reservoir are affected by minimum and maximum reservoir elevation and the timing and extent of reservoir filling and drawdown rates.

Reservoir elevation affects fish in two ways: first, minimum elevation in the spring (early April) determines growing season productivity, and second, reservoir elevation continuously affects the quantity of habitat available and the ease of access to preferred habitat. Overall, growing season productivity in Carpenter Reservoir is relatively low (Limnotek 2018), which typically corresponds to a smaller biomass of lacustrine invertebrates. A greater portion of the food web in Carpenter Reservoir is composed of invertebrate drift from the Middle Bridge River and reservoir tributaries (Limnotek 2018). Low food availability driven by a low biomass of lacustrine invertebrates may explain why primarily lacustrine species (e.g., kokanee, Redside Shiners, and Rainbow Trout) are less resilient to extended periods of low reservoir elevation. Conversely, species that are more river-adapted, including Mountain Whitefish, and Bull Trout, can survive in shallower riverine habitats and can take advantage of the rich food sources flowing in from the Middle Bridge River and large western tributaries. When reservoir elevations are high, all species benefit from higher habitat volume and increased food availability. For kokanee and Rainbow Trout, food availability during full pool is high due to warmer temperatures and longer water residence times resulting in increased zooplankton biomass. For Bull Trout and Mountain Whitefish, food availability is high due to easy access to large western reservoir tributaries, and for Bull Trout, better conditions for lacustrine prey species.

Low summer elevations in 2016 through 2018 may have affected the condition, relative abundance, and distribution of Carpenter Reservoir Bull Trout. Bull Trout are adaptable to both reservoir and river conditions; however, Bull Trout are known to have strict thermal tolerances with optimal water temperatures of ~11-15°C and lethal temperatures of ~21°C (Selong et al 2001, McPhail 2007). Adfluvial Bull Trout populations generally seek refuge in cool tributaries as water temperatures increase in the summer (Kovach et al 2017, Kang et al 2017, Sawatzky 2016). A literature review found little information regarding the distribution of Bull Trout in lakes and reservoirs, but Bull Trout distribution data from Carpenter Reservoir suggest Bull Trout rely heavily on tributary confluences, possibly because the tributaries themselves are relatively small and steep (i.e., many are inaccessible to Bull Trout during all or part of the year), and because prey species congregate at the confluences to feed on invertebrate drift. When summer elevations are low, access to many large, cool tributaries (e.g., Truax Creek, Gun Creek, Tyaughton Creek) is restricted because they flow into the Middle Bridge



River (when elevations are high these tributaries flow into the reservoir itself). Tributaries that flow into the Middle Bridge River do not provide optimal habitat or forage conditions for Bull Trout or their prey species because they are difficult to access (i.e., fish must migrate further up the turbid Middle Bridge River to reach them), and high flows in the Middle Bridge River inhibit the formation of a cool, clear pool at the confluence (ideal for thermal refuge and visually-driven predation).

BRGMON-4 data provide some evidence that the low summer elevations and low minimum spring elevations have resulted in population-level changes to Carpenter Reservoir Bull Trout. Fulton's condition factor shows a general decline in condition of Bull Trout, Mountain Whitefish, and Rainbow Trout in 2016 and 2017, and a recovery of condition in 2018 and 2019. This trend is somewhat delayed in Bull Trout, suggesting condition may have been indirectly affected by decreased condition of prey species in the previous year. The cause of increased condition in 2018 and 2019 is unknown, but could be related to changes in age distributions, decreasing competition due to population declines, and higher summer elevations in 2019. Although changes in body condition provide evidence of elevation-related population effects, condition factor may not fully reflect changes to fish health and overall body composition. Fulton's condition factor is effective at non-lethally and coarsely evaluating fish condition, but it may not reflect the complex changes to food webs that can occur with habitat alterations (Blackwell et al. 2000). There is also evidence of a lower proportion of immature Bull Trout in Carpenter Reservoir since the onset of Modified Operations, consistent with a hypothesized decrease in overall reservoir productivity. Overall, preliminary evidence from BRGMON-4 suggests low reservoir elevations in Carpenter Reservoir may have resulted in poor conditions for Bull Trout and subsequent decrease in the number of mid-sized individuals.

The acoustic tagging program also suggests that low reservoir elevations restrict Bull Trout movements. We have seen preliminary evidence of a decline in the number of Bull Trout that migrate into the Middle Bridge River in the late summer and an increase in the number of movements observed at the mid-reservoir acoustic gate. In 2015 and 2016, Bull Trout were detected making potential spawning migrations into the Middle Bridge River in July and August, but this pattern was absent from 2017 to 2019. Bull Trout may be spawning less frequently in the Middle Bridge River and instead spawning in Carpenter Reservoir tributaries (which have limited suitable spawning sites; Griffith 1999) or forgoing spawning in some years (skip-spawning). Skip-spawning can occur in Bull Trout populations when body condition decreases, fish densities increase, or productivity decreases (Caskenette et al 2016), all of which may be occurring in Carpenter Reservoir as a result of Modified Operations in 2016 through 2019. Although these data are preliminary, increasing skip-spawning rates could lead to a decline in the Bull Trout population in future years.

Condition of Rainbow Trout in Carpenter Reservoir was lower in 2016 through 2018 relative to 2013 through 2015. As with Bull Trout, declining Rainbow Trout condition may be related to the decline in overall habitat volume in Carpenter Reservoir, particularly in 2017 and 2018. For Mountain Whitefish, condition factor was more stable throughout BRGMON-4, potentially because this species is less reliant on lacustrine habitat than Rainbow Trout, and therefore may be less affected by low reservoir elevations. Although BRGMON-4 does not estimate abundance of Rainbow Trout or Mountain Whitefish, relative capture rates of these species have been variable, potentially indicative of density-dependent processes. Although there are multiple interactions between species and years



that are difficult to account for, the weight-of-evidence suggests that reservoir conditions in recent years have been relatively poor for many fish species, resulting in some degree of decreasing body condition and constricted movement patterns, both of which could potentially lead to declines in abundance.

The effect of reservoir operations on kokanee is more difficult to interpret. The primary index of kokanee abundance is annual spawner counts performed in August and September since 2014, which have been highly variable. Kokanee rely heavily on lacustrine habitat for most of their lifespan, and we would expect that years with low minimum and maximum reservoir elevation would contract kokanee habitat and negatively affect kokanee populations. For example, low minimum elevations (<610 m) in Carpenter Reservoir in the mid-1990s resulted in the near extinction of the Carpenter Reservoir kokanee population (Griffith 1999). Low minimum reservoir elevations in 2017 through 2019 and entrainment of kokanee through the Terzaghi Dam in 2016 and 2017 may be negatively affecting kokanee abundance in Carpenter Reservoir (Putt et al 2018). In 2018, kokanee spawner counts were very low, and no kokanee spawners were observed in 2019. In contrast, spawner counts were high in 2017 despite low spring elevations. The delayed effect of reservoir drawdown and entrainment on kokanee spawner abundance may have occurred because kokanee entrained in 2016 likely reached sexual maturity in 2018 and 2019 (81% of kokanee entrained in 2016 were estimated to be age 1+ or 2+; McHugh et al. 2017). It is important to consider that the limited scope of kokanee sampling may not accurately represent kokanee populations in the reservoir; however, given the contraction of lacustrine habitat, kokanee abundance will likely be depressed with continued low minimum elevations.

Kokanee spawner surveys and observations of redds and paired kokanee suggest that kokanee rarely spawn within the drawdown zone of Carpenter Reservoir tributaries, and the risk of redd inundation is therefore low. Qualitative habitat surveys support this finding as habitat within the drawdown zone is generally highly braided and shallow and has little to no riparian cover (Appendix B). Although the risk of redd inundation is low, poor habitat conditions within the drawdown zone may still affect kokanee spawning success as kokanee must migrate through the drawdown zone to reach upstream spawning habitats. Shallow braided tributaries require more energy for migration, and a lack of cover increases predation risk. These risks are exacerbated when reservoir elevations are low and the drawdown one longer during the kokanee spawning period. Kokanee spawning occurs in the Middle Bridge River, and access to the Middle Bridge River remains unrestricted regardless of reservoir elevation. Poor spawning conditions in Carpenter Reservoir tributaries may shift kokanee spawner distributions into the Middle Bridge River; however, the quality of spawning habitat in the Middle Bridge River is unknown due to low visibility.

#### **4.2.4 Management Question 4: Is there a relationship between specific characteristics of the in-stream flow in the Middle Bridge River that contribute to reduced or improved productivity of fish populations in Carpenter Reservoir and the Middle Bridge River?**

There are limited opportunities to monitor fish in the Middle Bridge River due to high turbidity in the river throughout the year. Also, the effect of conditions in the Middle Bridge River and in Carpenter Reservoir are confounded as most species spend at least part of their life cycle in both

habitats. The effect of operations at Lajoie Dam are primarily captured by relating elevations in Carpenter Reservoir (Management Question 3), and assessing how conditions in the Middle Bridge River may affect spawning and incubation.

Spawning Mountain Whitefish have been monitored in the Middle Bridge River via spawner angling surveys in several years beginning in 2009 (Tisdale 2010, Putt et al. 2018). Spawn timing and hatch calculations suggest Mountain Whitefish spawn in the Middle Bridge River in mid- to late- November and hatch in early February and Kokanee spawn in the Middle Bridge River in September and hatch in early December. Middle Bridge River stage heights are relatively stable through these periods and there are generally few rampdowns at Lajoie Dam. Given this, Tisdale (2010) and BRGMON-4 both concluded that the direct risk to egg dewatering from Lajoie Dam operations is low for both Mountain Whitefish and Kokanee.

Despite the low risk of redd dewatering in the Middle Bridge River, operations at Lajoie Dam have the potential to impact fish in the river and in Carpenter Reservoir. Winter water temperatures are more stable and elevated in the Middle Bridge River relative to other Carpenter Reservoir tributaries, resulting in faster hatch dates, particularly for kokanee. Earlier emergence could expose alevin to different flow velocities and food availability relative to those emerging later in the tributaries. Management of Lajoie Dam also affects turbidity and the amount of fine particulate matter in the Middle Bridge River. Regulated flow regimes (with infrequent high flow events) result in armouring of substrates (i.e., interstitial spaces become filled with particulate), and may affect spawning success of fish species that spawn there (Meibner et al 2018). We observed armoured and sandy substrate in many areas of the Middle Bridge River during Mountain Whitefish egg mat surveys in 2013 and 2016. Mountain Whitefish are broadcast spawners and rely on eggs settling into interstitial spaces. In armoured substrate like in the Middle Bridge River, fewer eggs may successfully settle into the substrate and incubate. Similarly, fish that dig redds, such as kokanee, may be challenged to dig redds in the armoured substrate, resulting in fewer spawning events, shallower redds, and decreased spawning success (Sear 1993).

#### **4.2.5 Management Question 5: Can refinements be made to the operation of Carpenter Reservoir and management of in-stream flow releases from Lajoie Generating Station into the Middle Bridge River to improve protection or enhance fish populations in both of these areas, or can existing constraints be relaxed?**

Management Question 5 will be answered using insights from answers to Management Questions 1 through 4. Preliminary evidence suggests that low elevations in the early spring and summer may result in decreased reservoir productivity and overall habitat volume, which may be detrimental to fish populations in Carpenter Reservoir. Increasing spring minimum elevations (to promote increased reservoir productivity) and summer maximum elevations (to increase overall habitat volume and access to large tributary inflows) may therefore improve habitat conditions and productivity of fish populations. A greater understanding of Management Questions 1 through 4 through continued monitoring will help to determine whether operation of Carpenter Reservoir and Lajoie Dam can be adjusted to improve fish populations in the reservoir and in the river.

#### 4.2.6 Conclusions and Recommendations

Data collected during BRGMON-4 suggest fish populations in Carpenter Reservoir and the Middle Bridge River are affected by operation of the Bridge River power system. The monitoring program appears to be on track to answering the management questions using a weight of evidence approach; however, not all species, life stages, and habitat areas can be comprehensively discussed. For example, it has not been feasible to monitor fish and fish habitat in the Middle Bridge River to a degree that allows for specific hydrograph recommendation that would benefit fish that spawn and rear in the river. Despite uncertainties, BRGMON-4 will provide valuable insight into fish communities in Carpenter Reservoir and the Middle Bridge River and help to answer each management question to the highest degree possible. Insights from BRGMON-4 can be used to develop future monitoring programs and recommend management changes to improve fish productivity.

We recommend monitoring in 2020 remain consistent with previous years, prioritizing methods that are most effective and best suited to addressing the management questions. Field activities will include, at minimum, acoustic monitoring of adult Bull Trout, Bull Trout abundance estimation via mark-recapture sampling, collection of length, weight, and age data for Bull Trout, Rainbow Trout, kokanee, and Mountain Whitefish, and kokanee spawning surveys.

## 5 References

- Anderson, R.O., R.M. Neumann. 1996. Length, weight, and associated structural indices. Pages 447-482 in B.R. Murphy and D.W. Willis, editors. *Fisheries techniques*, 2<sup>nd</sup> edition. American Fisheries Society, Bethesda, Maryland.
- BC Hydro. 2015. Bridge Seton Water Use Plan Monitoring Program No. BRGMON-4 Carpenter Reservoir and Middle Bridge River Fish Habitat and Population Monitoring. Bridge-Seton Water Use Plan Monitoring Program Terms of Reference Addendum 1. 10p.
- BC Hydro. 2014. Bridge River Recreation Areas. Accessed online December 6, 2014: [www.bchydro.com/community/recreation\\_areas/bridge\\_river.html](http://www.bchydro.com/community/recreation_areas/bridge_river.html).
- BC Hydro. 2012. Bridge Seton Water Use Plan Monitoring Program No. BRGMON-4 Carpenter Reservoir and Middle Bridge River Fish Habitat and Population Monitoring. Bridge-Seton Water Use Plan Monitoring Program Terms of Reference. 10 p.
- BC Hydro. 2011. Bridge River Power Development Water Use Plan. 79 p.
- Blackwell, B.G., Brown, M.L. and Willis, D.W. 2000. Relative weight (Wr) status and current use in fisheries assessment and management, *Reviews in Fisheries Science*, 8:1, 1-44, DOI: 10.1080/10641260091129161
- Boyer, J.K., Guy, C.S., Webb, M.A.H., Horton, T.B., and T.E. McMahon. 2017. Reproductive ecology, spawning behavior, and juvenile distribution of Mountain Whitefish in the Madison River, Montana. *Transactions of the American Fisheries Society*, 146:5, 939-954. DOI: 10.1080/00028487.2017.1313778.

- Bridge River Consultative Committee (BRCC). 2003. Consultative Committee Report: Bridge River Water Use Plan. Accessed December 19, 2017 from [https://www.bchydro.com/content/dam/hydro/medialib/internet/documents/environment/pdf/wup\\_bridge\\_river\\_executive\\_summary\\_pdf.pdf](https://www.bchydro.com/content/dam/hydro/medialib/internet/documents/environment/pdf/wup_bridge_river_executive_summary_pdf.pdf)
- Burnett, N.J., and Parkinson, E. 2018. Bull Trout and Rainbow Trout tagging and assessment of fish entrainment in Seton Lake reservoir – final report. Report prepared for BC Hydro by InStream Fisheries Research Inc. and Eric Parkinson. 51 p. and 3 apps.
- Burnham, K.P., and Anderson, D.R. 2002. Model selection and multimodel inference: A practical information-theoretic approach (2<sup>nd</sup> ed.) Springer-Verlag, ISBN 0-387-95364-7.
- Caskenette, A.L., Young, J.A.M., and Koops, M.A. 2016. Recovery Potential Modelling of Bull Trout (*Salvelinus confluentus*) (Saskatchewan – Nelson rivers population) in Alberta. DFO Can. Sci. Advis. Sec. Res. Doc. 2016/099. iv + 40p.
- Chamberlain, M.W., O'Brien, D.S., Caverly, A., & Morris, A.R. 2001. 2000 Middle Bridge River Bull Trout (*Salvelinus confluentus*) and Kokanee (*Oncorhynchus nerka*) Investigation. British Columbia Ministry of Environment, Lands and Parks, Fisheries Branch, Southern Interior Region.
- Cooch, E., and G. White. 2006. Program MARK: A gentle introduction. Available online at <http://www.phidot.org/software/mark/docs/book/>
- Davidson, R.S. and D.P. Armstrong. 2002. Estimating impacts of poison control operations on non-target species using mark-recapture analysis and simulation modelling: an example with saddlebacks. *Biological Conservation* 105: 374-381.
- Department of Fisheries and Oceans Canada (DFO), Ed C. Clarke. 1997. Predictions for Salmonid Egg Development. Published in Aquaculture Update No. 80. Pacific Biological Station, Nanaimo.
- Elwen, S.H., Reeb, D., Thornton, M., and P.B. Best. 2009. Population estimate of Heavyside's dolphins, *Cephalorhynchus heavysidii*, at the southern end of their range. *Marine Mammal Science*, 25(1), 107-124.
- Ernhardt, J.M., and Dennis L. Scarnecchia. 2016. Growth Model Selection and its Application for Characterizing Life History of a Migratory Bull Trout (*Salvelinus confluentus*) Population. *Northwest Science*, 90(3): 328-229.
- Golder Associates Ltd., Poisson Consulting Ltd., and Okanagan Nation Alliance. 2017. CLBMON-16 Middle Bridge River Fish Population Indexing Survey 2016 Report. Report prepared for BC Hydro Generation, Water License Requirements, Revelstoke, BC. 65 pages + 9 app.
- Golder Associates Ltd., Poisson Consulting Ltd., and Okanagan Nation Alliance. 2016. CLBMON-45 Lower Columbia River Fish Population Indexing Survey 2015 Report. Report prepared for BC Hydro Generation, Water License Requirements, Castlegar, BC. 75 pages + 8 app.
- Griffith, R.P. 1999. Assessment of fish habitat and production in Carpenter Lake Reservoir relative to hydroelectric operations. Prepared for B.C. Hydro, Kamloops BC. 216 p.

- Guy, C.S. & M.L. Brown. 2007. Analysis and Interpretation of Freshwater Fisheries Data. Bethesda, Maryland, USA, American Fisheries Society.
- Harris, J.E., Newlon, C., Howell, P.J., Koch, R.C., and Steven L. Haeseker. 2016. *Ecol Freshw Fish*. 2018(27), 103:115.
- He, J.X. and J.R. Bence. 2007. Modelling annual growth variation using a hierarchical Bayesian approach and the von Bertalanffy growth function, with application to lake trout in southern Lake Huron, Transactions of the American Fisheries Society, 136(2), 318-33.
- Isermann D.A., and C.T. Knight. 2005. A computer program for age-length keys incorporating age assignment to individual fish. *North American Journal of Fisheries Management*. 25: 1153-1160.
- Kang, M., Warnock, W.G., and Canadian Columbia River Inter-Tribal Fisheries Commission. 2017. WLR Monitoring Study No. CLBMON-06 (Year 2). Kinbasket Reservoir Bull Trout Life History and Habitat Use Assessment. Prepared for BC Hydro, Burnaby BC. 37 p.
- Kessel, S.T., Cooke, S.J., Heupel, M.R., Hussey, N.E., Simpfendorfer, C.A., Vagle, S. and A.T. Fisk. 2014. A review of detection range testing in aquatic passive acoustic telemetry studies. *Rev Fish Biol Fisheries*. 24: 199-218.
- Kovach, R.P., Al-Chokhachy, R., Whited, D.C., Schmetterling, D.A., Dux, A.M. and C.C. Muhfeld. 2017. Climate, invasive species and land use drive population dynamics of a cold-water specialist. *Journal of Applied Ecology*. 54, 638-647.
- Laake, J.L. 2016. Package simcr. GitHub Repository: <https://github.com/jlaake/simcr>
- Laake, J.L. 2013. RMark: An R Interface for Analysis of Capture-Recapture Data with MARK. AFSC Processed Rep 2013-01, 25p. Alaska Fish. Sci. Cent., NOAA, Natl. Mar. Fish. Serv., 7600 Sand Point Way NE, Seattle WA 98115.
- Laake, J.L., Johnson, D.S., and P.B. Conn. 2013. R: An R package for maximum-likelihood and MCMC analysis of capture-recapture data. *Methods Ecol. Evol.* 4: 885-890.
- Lebreton, J-D, Burnham, K.P., Clobert, J & D.R. Anderson. 1992. Modelling survival and testing biological hypotheses using marked animals: A unified approach with case studies.
- Leslie, K. 2003. Use of Stable Isotope Analysis to Describe Fish Food Webs. Master of Resource Management, Simon Fraser University, report No. 336.
- Limnotek. 2018. Carpenter Reservoir Productivity Model Validation and Refinement (BRGMON10): Draft of final report. Report prepared for BC Hydro. 93. plus appendices.
- McHugh, A.E., O'Farrell, D.P., and G.E. Michel. 2017. Lower Bridge River Kokanee Entrainment Spill Monitoring. 2016 Report Memo. Prepared for St'at'imc Eco Resources for the submission to the Deputy Comptroller of Water Rights, June 2017.
- McPhail, J.D. 2007. The Freshwater Fishes of British Columbia. University of Alberta Press, Edmonton, Canada.

- Meibner, T., Schutt, M., Sures, B. and Feld, C.K. 2018. Riverine regime shifts through reservoir dams reveal options for ecological management. *Ecological Applications*, 28(7), p 1897-1908.
- Minard, E.R. and J.D. Dye. 1998. Rainbow trout sampling and aging protocol. Alaska Fish and Game Department; Special Bulletin No. 98-2.
- Ogle, D.H. 2016a. Introductory Fisheries Analyses with R. Chapman & Hall/CRC The R Series. CRC Press. Kindle Edition; 99 pp.
- Ogle, D.H. 2016b. FSA: Fisheries Stock Analysis. R package version 0.8.10.
- Ombredane, D., Bagliniere, J., & Marchland, F. 1998. The effects of Passive Integrated Transponder tags on survival and growth of juvenile brown trout (*Salmo trutta* L.) and their use for studying movement in a small river. *Hydrobiologia*, 371, p 99-106.
- Perrin, C.J. and R.H. Macdonald. 1997. A phosphorus budget and limnology in Carpenter Lake Reservoir, 1995-1996, Draft Report. Limnotek Research and Development Inc, Vancouver, B.C. In, Griffith, R.P. 1999. Assessment of fish habitat and production in Carpenter Lake Reservoir relative to hydroelectric operations. Prepared for B.C. Hydro, Kamloops, BC, 202p.
- Pollock, K.H., Nichols, J.D., Brownie, C. & Hines, J.E. 1990. Statistical inference for capture-recapture experiments. *Wildlife Monographs*, 107, p 1-97.
- Putt, A., Ramos-Espinoza, D, and C. White. 2019. Carpenter Reservoir and Middle Bridge River Fish Habitat and Population Monitoring, Implementation Year 6 (2017-2018). BRGMON-4. Prepared for BC Hydro, 84p.
- Putt, A., D. Ramos-Espinoza, Melville, C., Burnett, N., Martin, C., and Lingard, S. 2018. Carpenter Reservoir and Middle Bridge River Fish Habitat and Population Monitoring, Implementation Year 5 (2016-2017). BRGMON-4. Prepared for BC Hydro, 88p.
- Putt, A., Melville, C., D. Ramos-Espinoza, and D. Braun. 2017. Carpenter Reservoir and Middle Bridge River Fish Habitat and Population Monitoring, Implementation Year 4 (2015-2016). BRGMON-4. Prepared for BC Hydro, 74p.
- Putt, A., Melville, C. & D. Ramos-Espinoza. 2016a. Carpenter Reservoir and Middle Bridge River Fish Habitat and Population Monitoring, Implementation Year 2 (2013-2014). BRGMON-4. Prepared for BC Hydro, Burnaby.
- Putt, A., Melville, C. & D. Ramos-Espinoza. 2016b. Carpenter Reservoir and Middle Bridge River Fish Habitat and Population Monitoring, Implementation Year 3 (2014-2015). BRGMON-4. Prepared for BC Hydro, Burnaby. Pending online publication.
- R Development Core Team. 2017. R: A language and environment for statistical computing. Vienna, Austria. <http://www.R-project.org>.
- R.L. & L. Environmental Services Ltd. 2001. Lower Columbia River Mountain Whitefish monitoring program: 1994-1996 investigations. Prepared for BC Hydro. R.L. & L. Report No. 514F, 101p.



- Sawatzky, C.D. 2016. Information in support of a recovery potential assessment of Bull Trout (*Salvelinus confluentus*) (Saskatchewan – Nelson Rivers population) in Alberta. DFO Can. Sci. Advis. Sec. Res. Doc. 2016/113. V + 190 p.
- Schwarz, C.J. and Arnason, A.N. 1996. A general methodology for the analysis of capture-recapture experiments in open populations. *Biometrics* 52, 860-873.
- Sear, D.A. 1993. Fine sediment infiltration into gravel spawning beds within a regulated river experiencing floods: Ecological implications for salmonids. *River Research and Applications* 8 (4), 373-390.
- Seber, G.A.F. 1982. Estimation of animal abundance and related parameters. Charles Griffin, London. 654 p.
- Selang, J.H., McMahon, T.E., Zale, A.V., and F.T. Barrows. 2001. Effect of temperature on growth and survival of Bull Trout, with application of an improved method for determining thermal tolerance in fishes. *Transactions of the American Fisheries Society*. 130(6), 1026-1037.
- Sneep, J. 2015a. Downton Reservoir Fish Habitat and Population Monitoring: Implementation Years 1 and 2. BRGMON-7. Prepared for BC Hydro, Burnaby, 41 p.
- Sneep, J. 2015b. Seton Lake Resident Fish Habitat and Population Monitoring: Implementation Years 1 and 2. BRGMON-8. Prepared for BC Hydro, Burnaby, 43 p.
- Thomas, L., Buckland, S.T., Burnham, K.P., Anderson, D.R., Laake, J.L., Borchers, D.L., and S. Stringberg. 2002. Distance sampling. *Encycl Environ* 1:544-552.
- Tisdale, G.A.E. 2013. BRGMON-4 Carpenter Reservoir and Middle Bridge River Fish Habitat and Population Monitoring. Implementation Year 1 Progress Report. Prepared for BC Hydro Generation, Burnaby, 45 p.
- Tisdale, G.A.E. 2000. 1999 Carpenter Lake Reservoir Rainbow Trout Spawning Assessment (*Onorhynchus mykiss*). Prepared for B.C. Hydro and Power Authority, Kamloops, B.C. 45 p.
- Tisdale, G.A.E. 2005. 2005 Middle Bridge River Rocky Mountain Whitefish (*Prosopium williamsoni*) Exploratory Spawning Assessment October 5, 2005 – December 22, 2005. Prepared for B.C. Hydro and Power Authority. 37 p.
- Tisdale, G.A.E. 2010. 2009 Middle Bridge River Rocky Mountain Whitefish (*Prosopium williamsoni*) Exploratory Spawning Assessment October 4, 2009 – December 21, 2009. Prepared for B.C. Hydro and Power Authority, Shalalth B.C. 40 p.
- von Bertalanffy, L. 1938. A quantitate theory of organic growth. *Human Biology* 10:181-213.
- Wagner, G.N., Cooke, S.J., Brown, R.S. and K.A. Deters. 2011. Surgical implantation techniques for electronic tags in fish. *Rev Fish Biol Fisheries*. 21:71-81.
- White, G.C., and K.P. Burnham. 1999. Program MARK: Survival estimation from populations of marked animals. *Bird Study*. 46(1): S120-S139.
- Winter, J. D. 1983. Underwater biotelemetry. Pages 371–395 in L. A. Nielsen and D. L. Johnson, editors. Fisheries techniques. American Fisheries Society, Bethesda, Maryland.

Zymonas, N.D. and T.E. McMahon. 2009. Comparison of pelvic fin rays, scales and otoliths for estimating age and growth of bull trout, *Salvelinus confluentus*. *Fisheries Management and Ecology*. 16: 155-164.



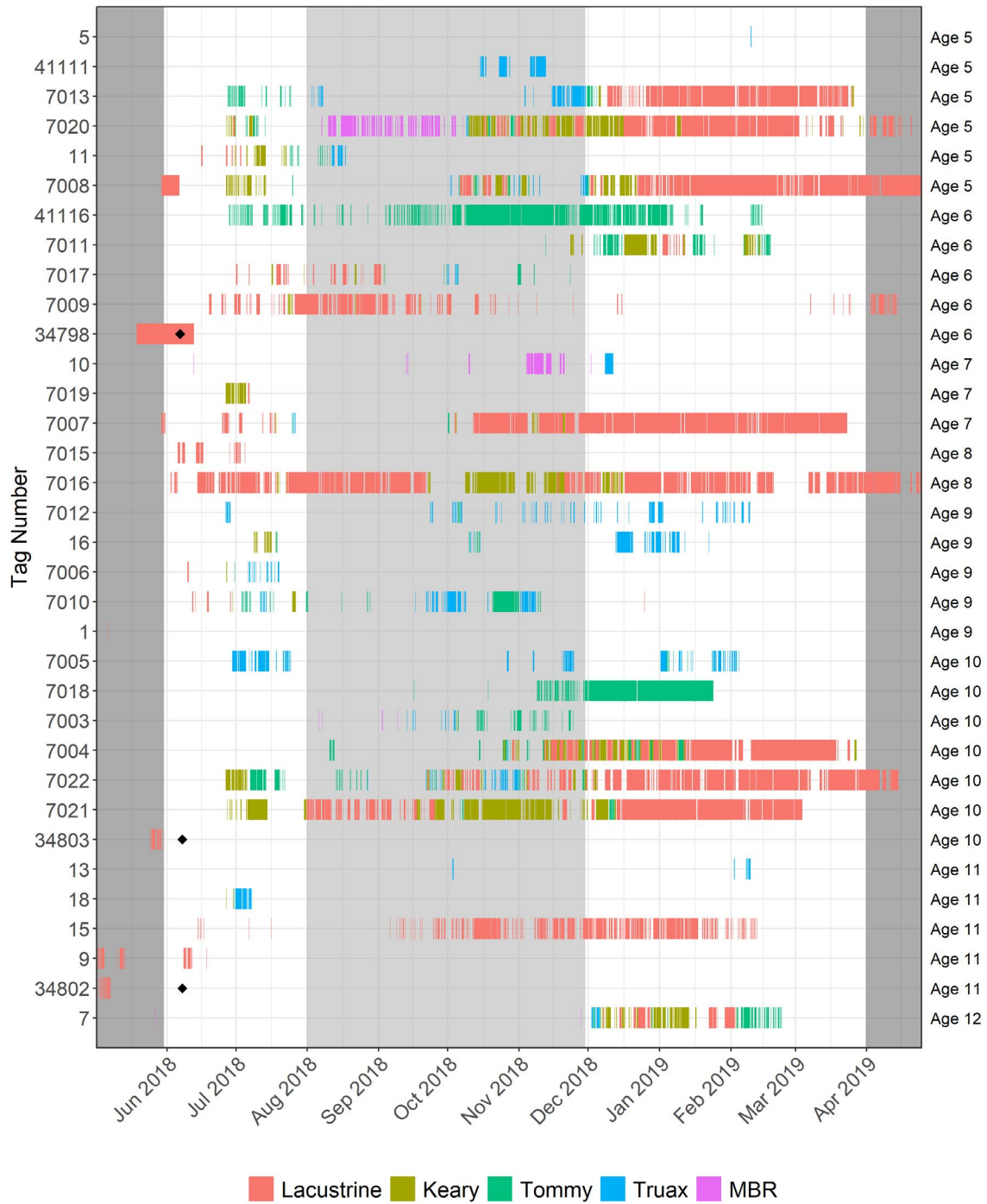
## Appendix A

### Summary of previous research and available data for Carpenter Reservoir and the Middle Bridge River.

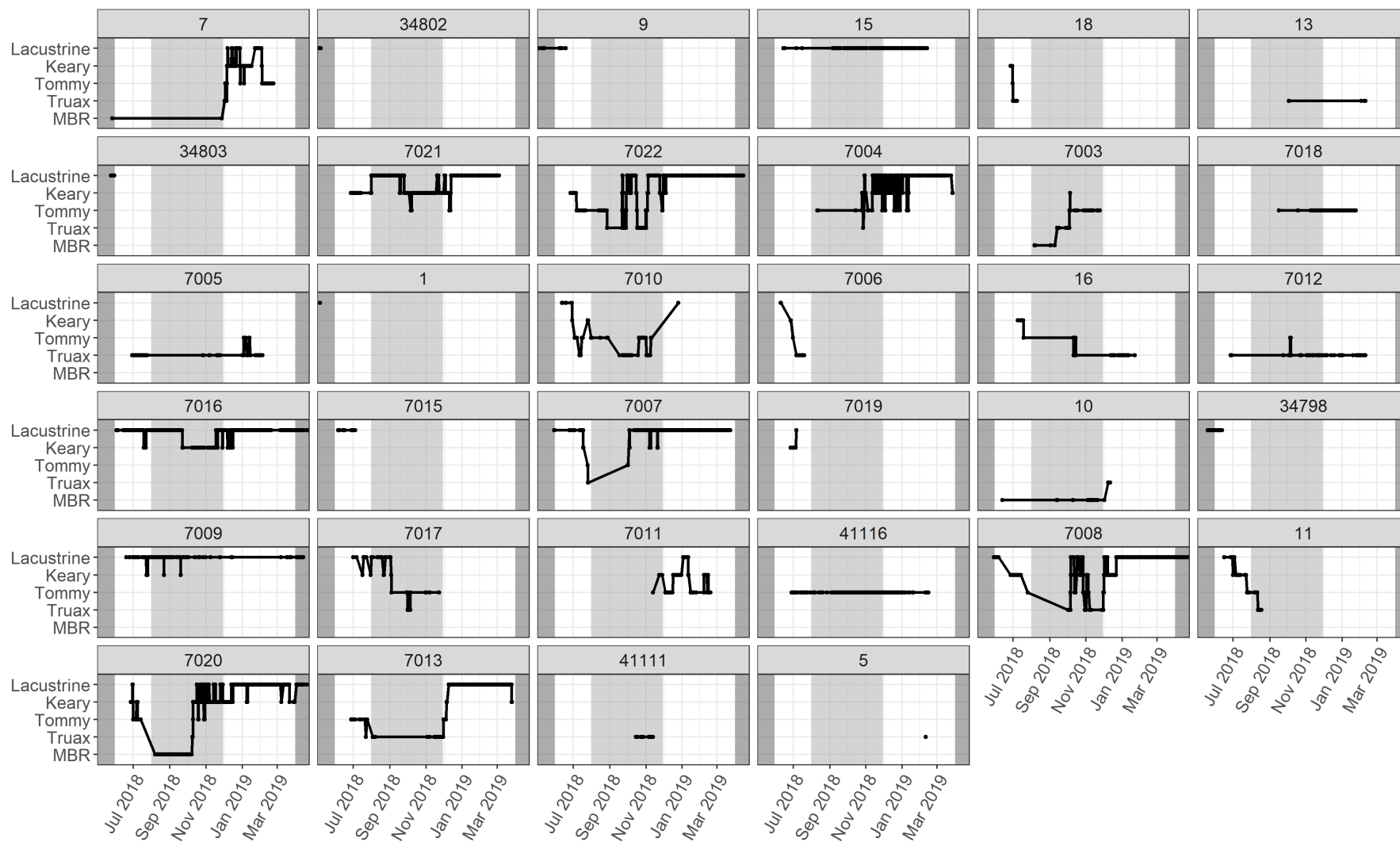
Author(s)	Sampling Period	Description	Notes and Primary Findings	Reference
Griffith, R.P.	1995-1996	<ul style="list-style-type: none"> <li>- Inventoried fish and fish habitat in tributaries (25 locations)</li> <li>- Gill netted on 4 occasions, primarily near the diversion tunnels</li> <li>- Monitored limnology in the reservoir</li> </ul>	<ul style="list-style-type: none"> <li>- Spawning habitat area was limited by accessible stream length, availability of spawning substrate, and lack of cover</li> <li>- Concluded the standing stock of fish in tributaries was below theoretical juvenile rearing capacity</li> <li>- High gill net catches were obtained for Bull Trout and Rainbow Trout relative to other regional lakes but lower kokanee density relative to 1993</li> <li>- Reservoir water residence time is low, likely resulting in low abundance of phytoplankton and zooplankton</li> </ul>	Griffith, R.P. 1999. Assessment of fish habitat and production in Carpenter Lake Reservoir relative to hydroelectric operations. Prepared for B.C. Hydro, Kamloops BC. 216 p.
Tisdale, G.A.E.	1999	<ul style="list-style-type: none"> <li>- Rainbow Trout spawning assessment in 17 tributaries (based tributaries on those identified by Griffith 1999)</li> <li>- Performed stream walks, assessed migration barriers, and monitored temperature and turbidity</li> </ul>	<ul style="list-style-type: none"> <li>- Spawning Rainbow Trout were observed in 6 tributaries</li> <li>- Peak spawning was from June 11 to July 23, 1999.</li> <li>- 125 Rainbow Trout were observed, 75% of which were in Marshall Creek (may be an important spawning location).</li> </ul>	Tisdale, G.A.E. 2000. 1999 Carpenter Lake Reservoir Rainbow Trout Spawning Assessment ( <i>Onorhynchus mykiss</i> ). Prepared for B.C. Hydro and Power Authority, Kamloops, B.C. 45 p.
Unknown	2000	<ul style="list-style-type: none"> <li>- Performed 92 cross-sectional acoustic transects in September of 2000 at a water surface elevation of 645 masl</li> </ul>	<ul style="list-style-type: none"> <li>- Analysed number of fish per transect and depth of fish</li> <li>- Concluded that more fish were present in the Eastern portion of the reservoir</li> <li>- Did not verify species during transects, so no abundances were estimated</li> </ul>	Unpublished
Chamberlain, M.W. et al	2000-2001	<ul style="list-style-type: none"> <li>- Used radio telemetry to track movements of Bull Trout in the Middle Bridge River and the reservoir</li> <li>- Quantified effects of an experimental drawdown of the Middle Bridge River on fish populations and habitat</li> <li>- Enumerated kokanee in the Middle Bridge River and reservoir tributaries</li> </ul>	<ul style="list-style-type: none"> <li>- Described Bull Trout movement (small sample size)</li> <li>- Monitored Middle Bridge River ramp-down in late July/early August</li> <li>- Increased stranding risk occurred but spawning effects were not quantified</li> <li>- No kokanee were observed in any streams</li> </ul>	Chamberlain, M.W., O'Brien, D.S., Caverly, A., and A.R. Morris. 2001. 2000 Middle Bridge River Bull Trout ( <i>Salvelinus confluentus</i> and <i>Kokanee</i> ( <i>Oncorhynchus nerka</i> ) Investigation. British Columbia Ministry of Environment, Lands and Parks,

Leslie, K.	2001	<ul style="list-style-type: none"> <li>- Sampled stable isotopes from trophic groups in Carpenter Reservoir, the Middle Bridge River, and reservoir tributaries over 5 months</li> <li>- Assessed food web dynamics in Carpenter Reservoir from variations in stable isotope enrichment ratios</li> </ul>	<ul style="list-style-type: none"> <li>- Stable isotope signatures of fish in the reservoir were more like reservoir chironomidae and Middle Bridge River macroinvertebrate drift than tributary production or reservoir zooplankton.</li> <li>- The carbon signatures of river drift and reservoir chironomidae could not be distinguished; could not discern whether fish were more dependant on river inputs or reservoir littoral inputs</li> </ul>	Leslie, K. 2003. Use of stable isotope analysis to describe fish food webs in a hydroelectric reservoir. Research Project submitted for requirements of the degree of Master of Resource Management. Simon Fraser University Report No.336. 100 p.
Higgins, P., Korman, J., et al.	2001	<ul style="list-style-type: none"> <li>- Performed shoreline boat electroshocking in CR in late September 2001.</li> <li>- Indexing performed at 29 sites around the reservoir.</li> </ul>	<ul style="list-style-type: none"> <li>- CPUE of Bull Trout, Rainbow Trout, and Bridgelip Sucker was evenly distributed amongst the reservoir tributary outflows</li> <li>- Mountain Whitefish CPUE was highest in the Middle Bridge River and at tributaries in the western portion of the reservoir</li> <li>- Redside Shiner CPUE was highest at tributary confluences in the eastern reservoir</li> </ul>	Unpublished
Tisdale, G.A.E.	2005 and 2009	<ul style="list-style-type: none"> <li>- Deployed spawning mats in the MBR to collect Mountain Whitefish eggs.</li> <li>- Angled Mountain Whitefish weekly, and sampled for age, sex, maturity, and length.</li> </ul>	<ul style="list-style-type: none"> <li>- Identified peak spawn timing and approximate hatch date for Mountain Whitefish in the Middle Bridge River</li> <li>- Existing flow regime did not appear to have impacted Mountain Whitefish or their spawning habitat for the 2007-2009 period</li> </ul>	<p>Tisdale, G.A.E. 2005. 2005 Middle Bridge River Rocky Mountain Whitefish (<i>Prosopium williamsoni</i>) Exploratory Spawning Assessment October 5, 2005 – December 22, 2005. Prepared for B.C. Hydro and Power Authority. 37 p.</p> <p>Tisdale, G.A.E. 2010. 2009 Middle Bridge River Rocky Mountain Whitefish Exploratory Spawning Assessment October 4– December 21, 2009. Prepared for B.C. Hydro and Power Authority, Shalalth B.C. 40 p.</p>

## Appendix B



**Figure B1. Individual movement histories for acoustic tagged Bull Trout in Carpenter Reservoir from May 2018 to April 2019. Black diamonds indicate predicted dates of battery failure.**



**Figure B2. Individual movement histories for acoustic tagged Bull Trout in Carpenter Reservoir from May 2018 to April 2019. Lines represent assumed movement behaviour.**