

Joanna Sofield
Chief Regulatory Officer
Phone: (604) 623-4046
Fax: (604) 623-4407
regulatory.group@bchydro.com

May 12, 2008

Ms. Erica M. Hamilton
Commission Secretary
British Columbia Utilities Commission
Sixth Floor – 900 Howe Street
Vancouver, BC V6Z 2N3

Dear Ms. Hamilton:

**RE: British Columbia Utilities Commission (BCUC)
British Columbia Hydro and Power Authority (BC Hydro)
F2004/05 to F2005/06 Revenue Requirements Application
Updated Annual Response to BCUC Directive No. 26**

BC Hydro is writing to the BCUC to provide its annual updated response to Directive No. 26 contained in the BCUC's Decision of October 29, 2004 regarding BC Hydro's F05/F06 Revenue Requirements Application.

BC Hydro submitted its initial compliance filing for Directive No. 26 in September 2005 and subsequently updated the available reliability indices as part of the F07/F08 Revenue Requirements Application submission in May 2006. BC Hydro submitted to the BCUC an annual update on these reliability indices in May 2007.

In this filing, BC Hydro submits the reliability indices for distribution performance through F2007 and generation performance through calendar year 2007.

Directive No. 26

"The Commission Panel expects BC Hydro and BCTC to present their reliability indices (SAIFI, SAIDI, CAIDI, ASAI, SARI, MAIFI, generation forced outages, availability, and generation outage rates) both combined and disaggregated (where applicable) on an annual basis with comparisons to CEA averages."

BC Hydro Response

Distribution Performance

The most recent annual Canadian Electricity Association (CEA) report includes the 2007 Annual Service Continuity Report on Distribution System Performance in Electrical Utilities. The comparative information for BC Hydro is provided in Attachment No. 1 both overall and disaggregated for the distribution system.



Generation Performance

The most recent annual CEA report on generation performance is the 2005 Generation Equipment Status Annual Report. CEA data on generation performance for the 2006 and 2007 calendar years are not yet available. The CEA generation data (2005 and earlier) along with BC Hydro's reliability indices through calendar year 2007 are presented in tabular and graphical form in Attachment No. 2. The CEA Generation Equipment Status Annual Report includes only internal outages (i.e., generation-caused outages) and therefore, for comparison purposes, the BC Hydro generation reliability data is reported herein in the same manner.

System Performance

Please note the SARI performance measure is not currently used for the BC Hydro portion of system performance, and BCTC files their reliability indices independently with the BCUC.

For further information please contact Fred James at 604-623-4317.

Yours sincerely,


for Joanna Sofield
Chief Regulatory Officer

Enclosures (2)

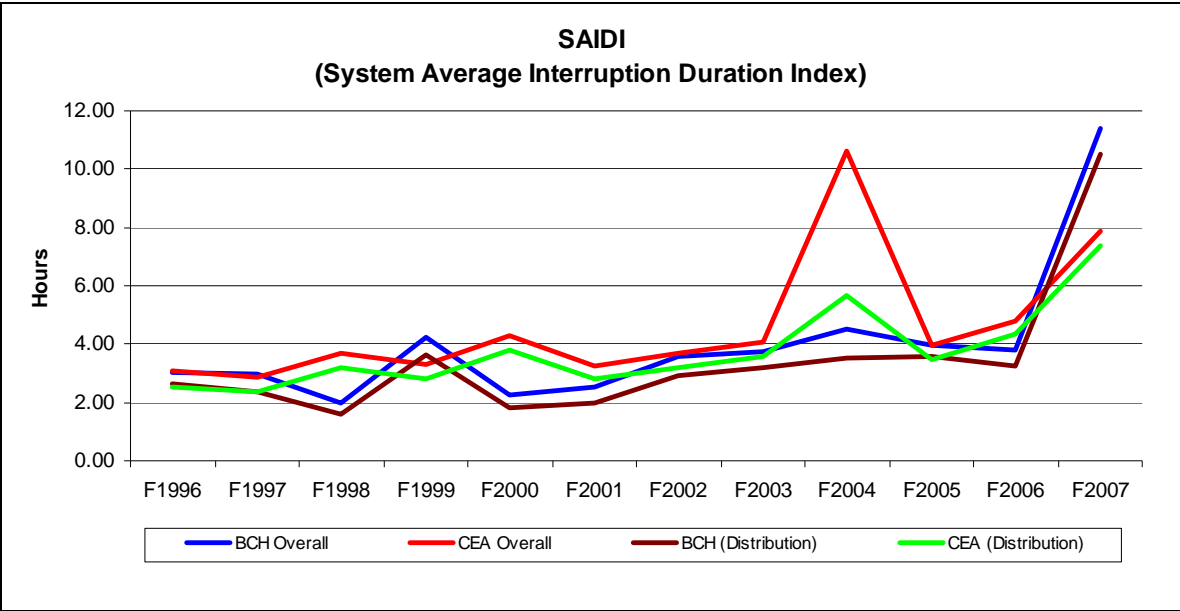
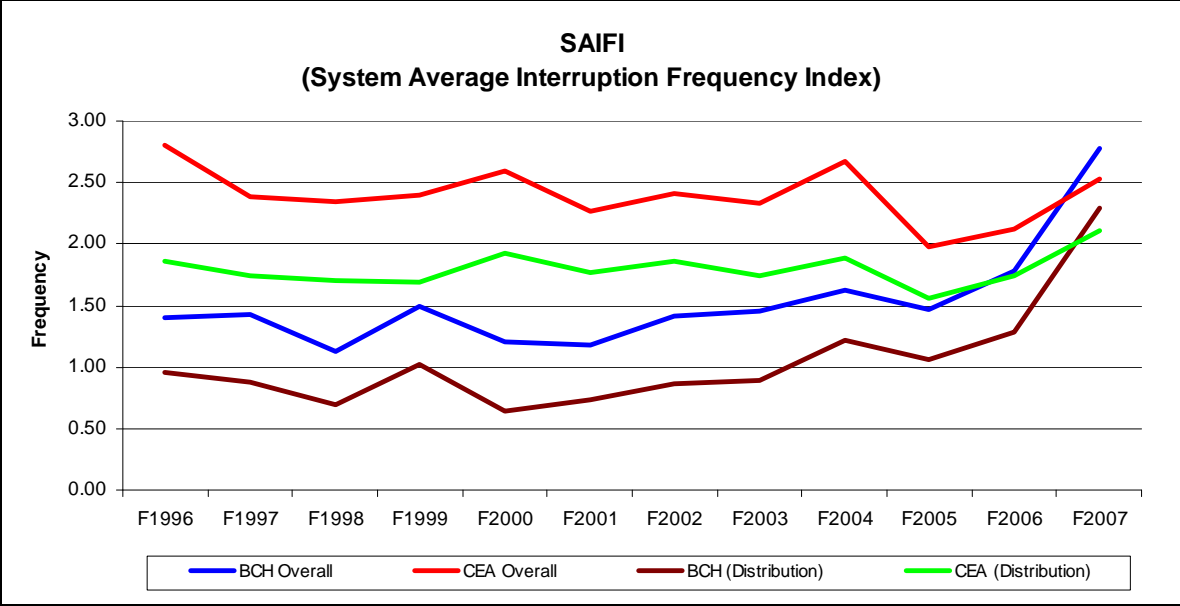
Attachment No. 1

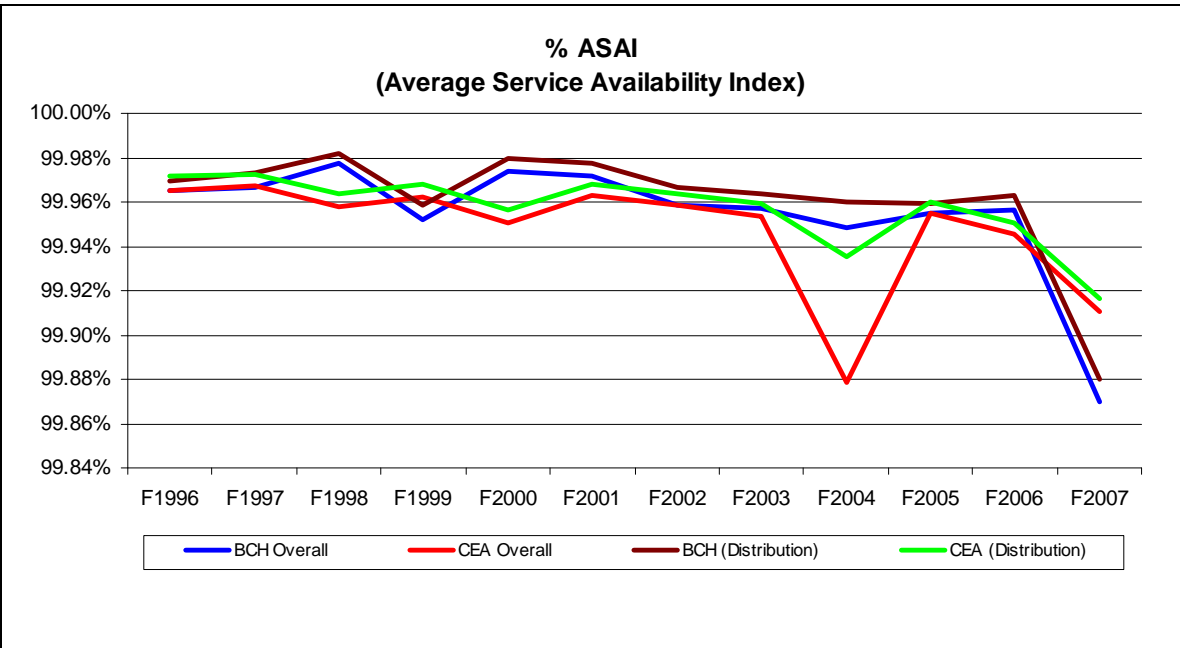
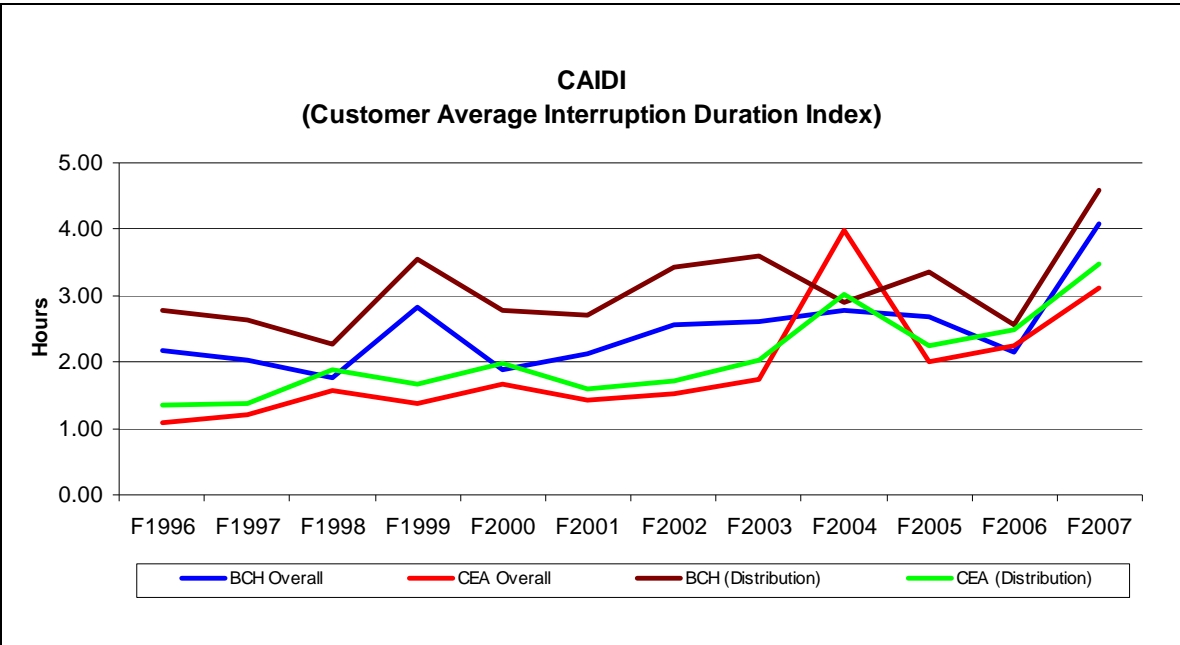
Table 1 Reliability Indices – BC Hydro Overall and CEA Overall

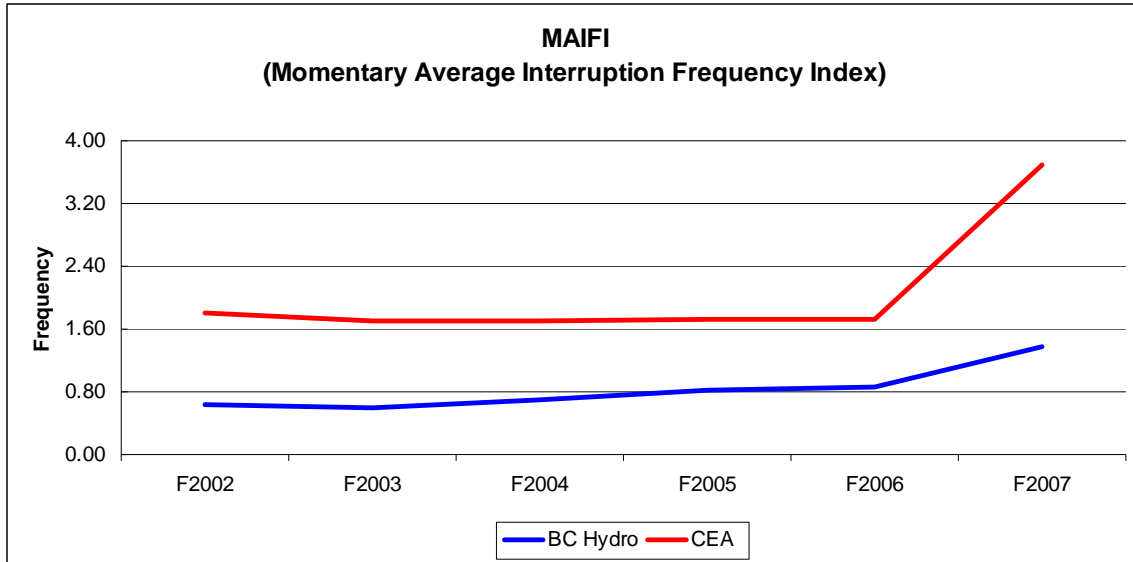
Year	BC Hydro Overall				CEA Overall			
	SAIFI	SAIDI	CAIDI	ASAI (%)	SAIFI	SAIDI	CAIDI	ASAI (%)
F1997	1.43	2.95	2.03	99.966	2.39	2.86	1.20	99.967
F1998	1.13	2.00	1.76	99.977	2.35	3.70	1.57	99.958
F1999	1.50	4.23	2.82	99.952	2.40	3.32	1.38	99.962
F2000	1.21	2.28	1.88	99.974	2.59	4.31	1.67	99.951
F2001	1.18	2.51	2.13	99.971	2.26	3.23	1.43	99.963
F2002	1.41	3.60	2.55	99.959	2.41	3.67	1.52	99.958
F2003	1.45	3.77	2.60	99.957	2.33	4.06	1.74	99.954
F2004	1.63	4.51	2.77	99.949	2.67	10.65	3.99	99.878
F2005	1.47	3.96	2.69	99.955	1.98	3.95	2.00	99.955
F2006	1.78	3.82	2.15	99.956	2.13	4.80	2.26	99.945
F2007	2.78	11.40	4.09	99.870	2.53	7.85	3.11	99.910

Table 2 Reliability Indices – BC Hydro (Distribution) and CEA (Distribution)

Year	BC Hydro (Distribution)				CEA (Distribution)			
	SAIFI	SAIDI	CAIDI	ASAI (%)	SAIFI	SAIDI	CAIDI	ASAI (%)
F1997	0.88	2.35	2.64	99.973	1.74	2.39	1.38	99.973
F1998	0.70	1.60	2.28	99.982	1.70	3.21	1.87	99.963
F1999	1.02	3.61	3.54	99.959	1.69	2.82	1.67	99.968
F2000	0.65	1.80	2.78	99.979	1.93	3.80	1.97	99.957
F2001	0.73	1.98	2.72	99.977	1.77	2.83	1.60	99.968
F2002	0.86	2.94	3.43	99.966	1.86	3.19	1.71	99.964
F2003	0.89	3.18	3.59	99.964	1.74	3.55	2.03	99.960
F2004	1.21	3.50	2.89	99.960	1.89	5.69	3.01	99.935
F2005	1.06	3.57	3.35	99.959	1.56	3.49	2.24	99.960
F2006	1.25	3.27	2.61	99.963	1.74	4.33	2.49	99.951
F2007	2.29	10.49	4.58	99.880	2.11	7.35	3.49	99.916







Note: The customer momentary interruptions and the resulting MAIFI may not apply to the utility's total customer population in the CEA comparison. Momentary outages are any interruptions on the feeders of less than one minute duration, caused by disturbance on the distribution, substation or transmission system.

Attachment No. 2

	BC Hydro Hydroelectric Units				CEA Hydroelectric Units			
	Availability Factor	Forced Outage Count (Internal)	Forced Outage Factor (Internal)	Failure Rate	Availability Factor	Forced Outage Count (Internal)	Forced Outage Factor (Internal)	Failure Rate
1997	91.95	2.56	1.85	2.52	91.18	3.24	1.66	2.67
1998	89.79	3.25	2.38	2.73	90.33	3.31	1.40	2.79
1999	92.19	2.68	1.37	2.64	91.87	3.56	1.60	2.64
2000	91.43	3.64	1.34	3.52	90.60	3.33	1.42	2.34
2001	89.76	3.83	1.16	3.78	91.25	3.09	1.18	2.26
2002	88.88	3.31	1.07	3.39	91.71	3.05	1.51	2.36
2003	89.31	3.19	1.31	3.13	91.39	3.21	1.34	2.37
2004	88.91	2.50	2.03	2.66	91.21	3.06	1.48	2.39
2005	89.94	2.87	1.54	2.54	90.17	3.18	1.62	2.33
2006	89.30	2.01	1.04	1.86	n/a	n/a	n/a	n/a
2007	86.39	2.08	2.42	1.89	n/a	n/a	n/a	n/a

