



Coquitlam Dam Seismic Upgrade Project

Information Session
November 26, 2005

Environmental Update
Sandra Wilson

Environmental Management Update

- Environmental monitoring activities
- Spoil, borrow and quarry sites
- Habitat compensation works

Environmental Monitoring

- Environmental monitor
- Sediment control (settling pond, silt fences)
- Water quality
- Fish flows



Spoil, Borrow and Quarry Sites

Permits

- License to Occupy Crown Land (LWBC)
- Permit to cut (Ministry of Forests and GVWD)
- Permits to extract impervious till from I6 and rock from R2

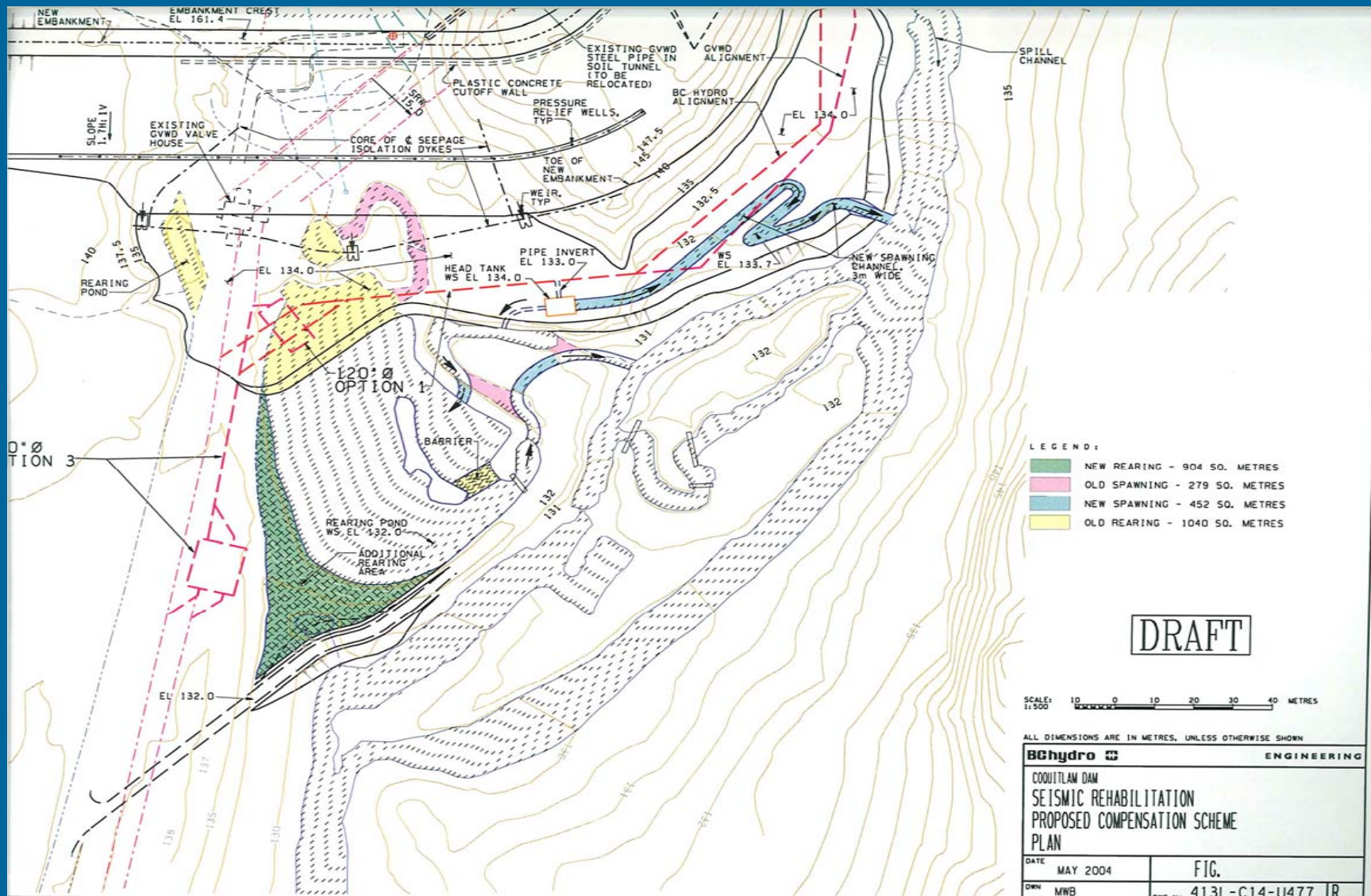
Environmental Management

- Environmental Assessment and Management Plan
 - Environmental buffer strips
 - Restoration plans (general)
- EPP (to be submitted by the contractor)

Spoil, Borrow and Quarry Sites

- Components of EPP:
 - Restoration plan (detailed)
 - Oil and Fuel Management Plan
 - Emergency Spill Response Plan
 - Water Handling Plan
 - Waste Management Plan
 - Monitoring provisions
 - Archaeology Management Plan
 - Fire Protection Plan
 - Construction Plan

Habitat Compensation Works



Habitat Compensation Works

Schedule

- Rearing pond partially complete October 2004
- Spawning channel to be built August 2006 to accommodate fall spawners
- Rearing pond habitat to be completed at end of construction project (place large woody debris and plant vegetation)