

Joanna Sofield

Chief Regulatory Officer

Phone: (604) 623-4046

Fax: (604) 623-4407

bhydroregulatory.group@bhydro.com

May 04, 2007

Mr. Robert J. Pellatt
Commission Secretary
British Columbia Utilities Commission
Sixth Floor – 900 Howe Street
Vancouver, BC V6Z 2N3

Dear Mr. Pellatt:

**RE: British Columbia Utilities Commission (BCUC)
British Columbia Hydro and Power Authority (BC Hydro)
2004/05 to 2005/06 Revenue Requirements Application
Updated Annual Response to BCUC Directive No. 26**

BC Hydro is writing to the BCUC to provide an update on Directive No. 26 contained in the BCUC's Decision of October 29, 2004 regarding BC Hydro's F2005 and F2006 Revenue Requirements Application.

BC Hydro submitted its initial compliance filing for Directive No. 26 in September 2005 and subsequently updated the available reliability indices as part of the F07/F08 Revenue Requirements Application submission in May 2006. This filing provides reliability indices for distribution performance through F2006 and generation performance through calendar year 2005.

Directive No. 26

"The Commission Panel expects BC Hydro and BCTC to present their reliability indices (SAIFI, SAIDI, CAIDI, ASAI, SARI, MAIFI, generation forced outages, availability, and generation outage rates) both combined and disaggregated (where applicable) on an annual basis with comparisons to CEA averages."

BC Hydro Response

Distribution Performance

The latest annual Canadian Electricity Association (CEA) report includes the 2006 Annual Service Continuity Report on Distribution System Performance in Electrical Utilities. The comparative information for BC Hydro is provided in Attachment No 1, both for the overall system, and disaggregated for the distribution system. (Please note the SARI performance measure is not currently used for the BC Hydro portion of system performance). BCTC files its reliability indices independently with the BCUC.



Generation Performance

The current CEA annual report on generation performance, "2004 Generation Equipment Status Annual Report", provides CEA data for generation performance. Attachment No. 2 presents the CEA generation data (2004 and earlier) along with BC Hydro's reliability indices in table and graphical form. The CEA Generation Equipment Status Annual Report includes only "internal" outages (i.e. generation-caused outages) and therefore, for comparison purposes, the BC Hydro generation reliability data is reported herein in the same manner.

Please contact Elaine MacDonald at 604-623-3912 for further information regarding this submission.

Yours sincerely,

A handwritten signature in black ink, appearing to read "J. Sofield". The signature is written in a cursive, flowing style.

Joanna Sofield
Chief Regulatory Officer

Enclosures (2)

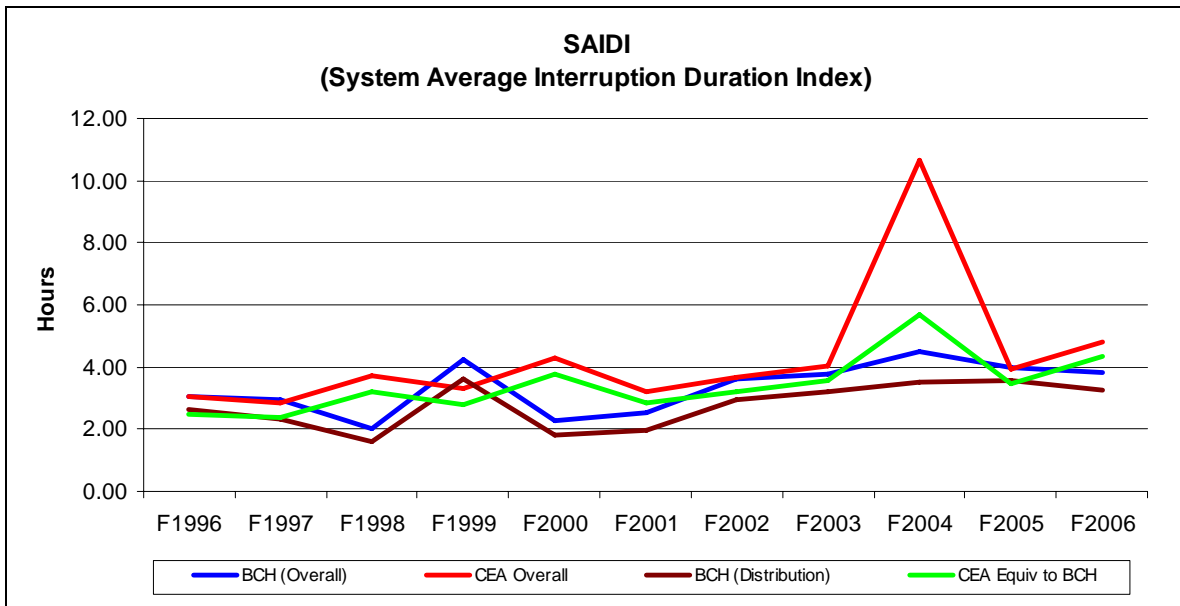
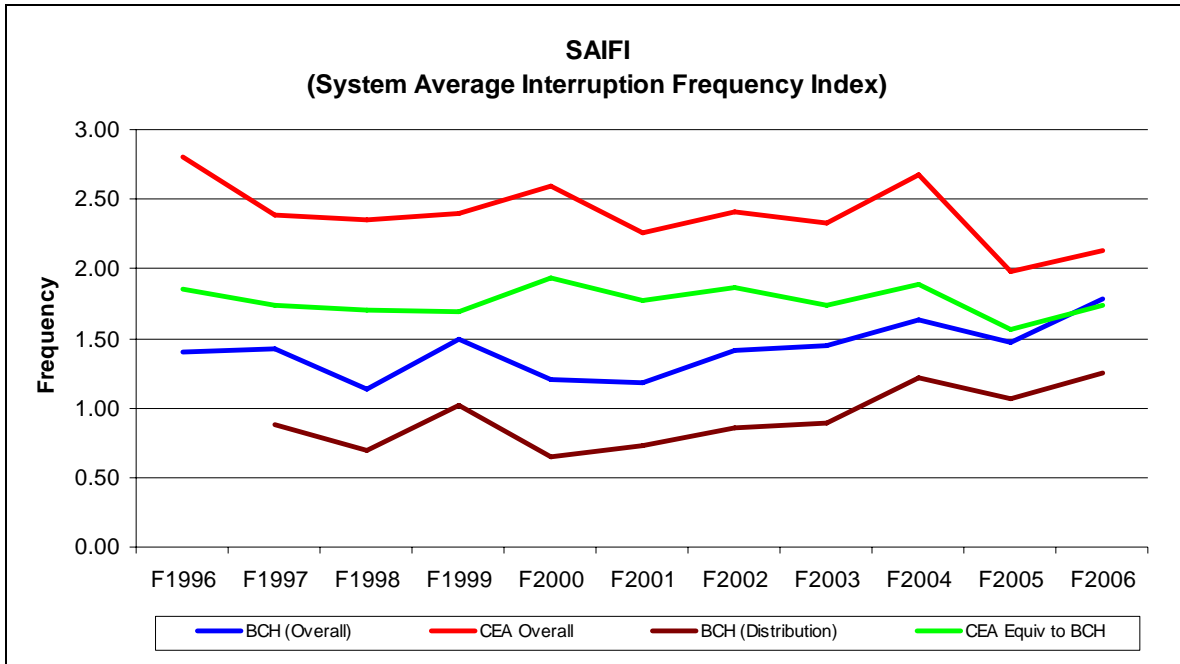
Attachment No.1

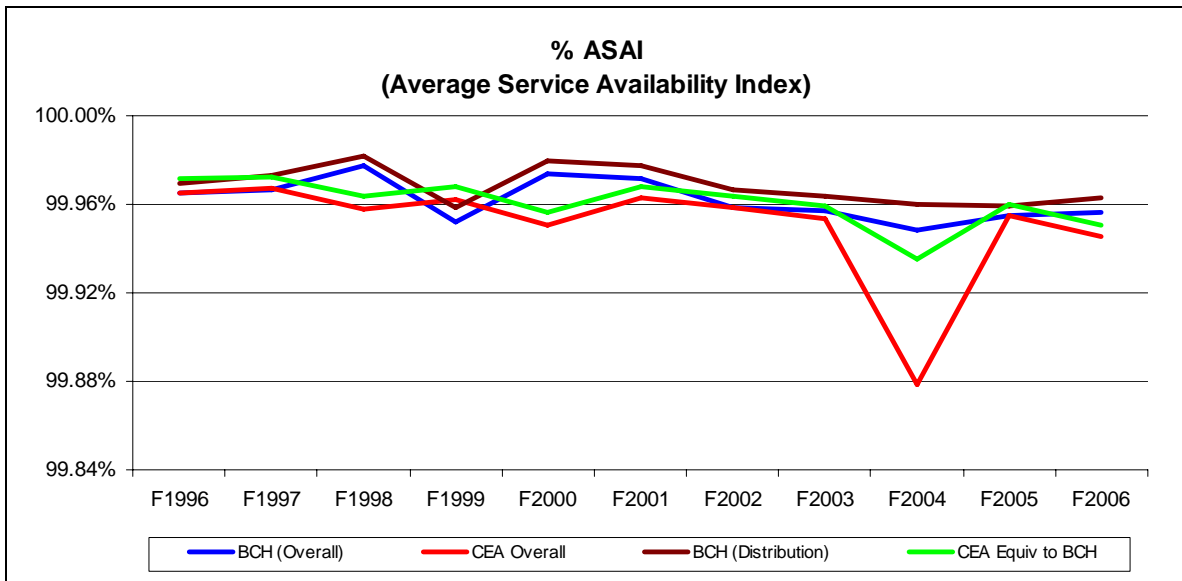
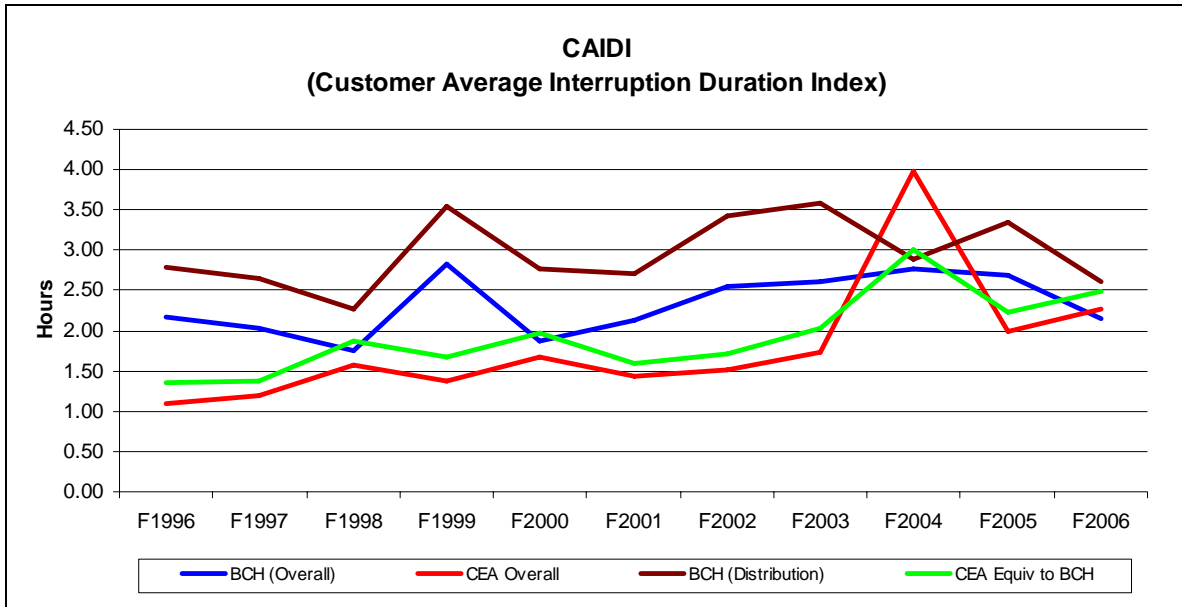
Table 1
Combined Reliability Indices – BC Hydro (Overall) and CEA (Overall)

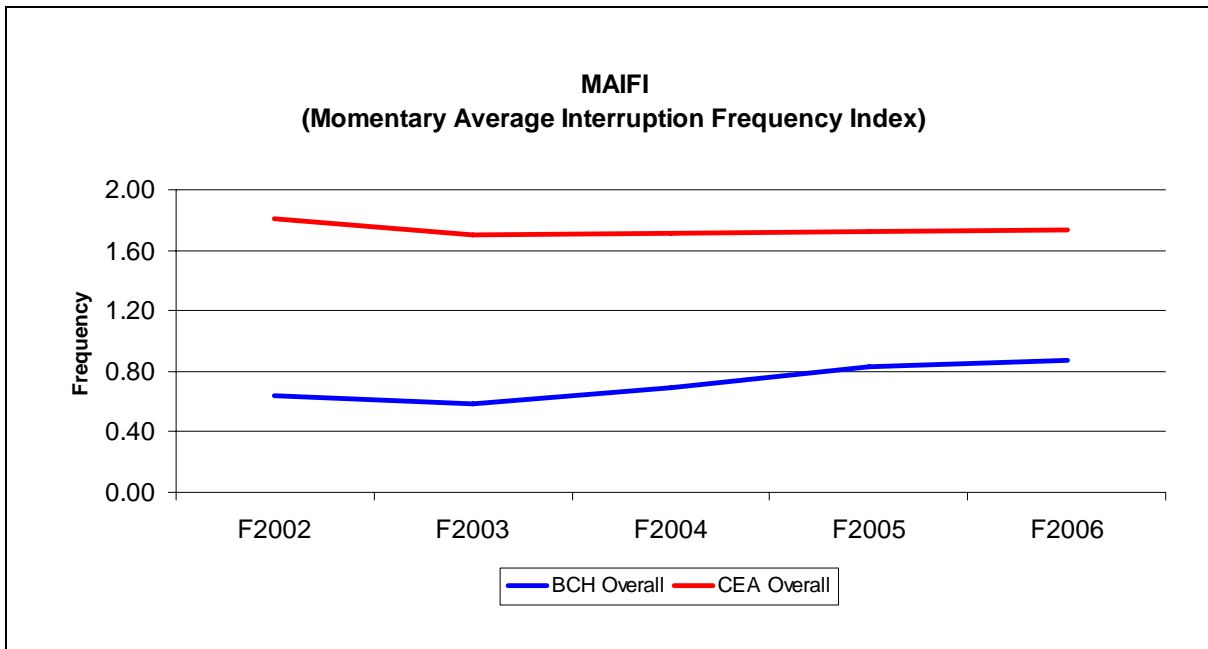
Year	BC Hydro (Overall)				CEA (Overall)			
	SAIFI	SAIDI	CAIDI	%ASAI	SAIFI	SAIDI	CAIDI	%ASAI
F1997	1.43	2.95	2.03	99.966%	2.39	2.86	1.20	99.967%
F1998	1.13	2.00	1.76	99.977%	2.35	3.70	1.57	99.958%
F1999	1.50	4.23	2.82	99.952%	2.40	3.32	1.38	99.962%
F2000	1.21	2.28	1.88	99.974%	2.59	4.31	1.67	99.951%
F2001	1.18	2.51	2.13	99.971%	2.26	3.23	1.43	99.963%
F2002	1.41	3.60	2.55	99.959%	2.41	3.67	1.52	99.958%
F2003	1.45	3.77	2.60	99.957%	2.33	4.06	1.74	99.954%
F2004	1.63	4.51	2.77	99.949%	2.67	10.65	3.99	99.878%
F2005	1.47	3.96	2.69	99.955%	1.98	3.95	2.00	99.955%
F2006	1.78	3.82	2.15	99.956%	2.13	4.80	2.26	99.945%

Table 2
Disaggregated Reliability Indices – BC Hydro (Distribution) and CEA (Distribution)

Year	BC Hydro				CEA (Distribution)			
	SAIFI	SAIDI	CAIDI	%ASAI	SAIFI	SAIDI	CAIDI	%ASAI
F1997	0.88	2.35	2.64	99.973%	1.74	2.39	1.38	99.973%
F1998	0.70	1.60	2.28	99.982%	1.70	3.21	1.87	99.963%
F1999	1.02	3.61	3.54	99.959%	1.69	2.82	1.67	99.968%
F2000	0.65	1.80	2.78	99.979%	1.93	3.80	1.97	99.957%
F2001	0.73	1.98	2.72	99.977%	1.77	2.83	1.60	99.968%
F2002	0.86	2.94	3.43	99.966%	1.86	3.19	1.71	99.964%
F2003	0.89	3.18	3.59	99.964%	1.74	3.55	2.03	99.960%
F2004	1.21	3.50	2.89	99.960%	1.89	5.69	3.01	99.935%
F2005	1.06	3.57	3.35	99.959%	1.56	3.49	2.24	99.960%
F2006	1.25	3.27	2.61	99.963%	1.74	4.33	2.49	99.951%







Note: The customer momentary interruptions and the resulting MAIFI may not apply to the utility's total customer population in the CEA comparison. Momentary outages are any interruptions on the feeders of less than 1 minute duration, caused by disturbance on the distribution, substation or transmission system.

Attachment No.2

Attachment No. 2

	BC Hydro Hydroelectric Units				CEA Hydroelectric Units			
	Availability Factor	Forced Outage Count	Forced Outage Factor	Failure Rate	Availability Factor	Forced Outage Count	Forced Outage Factor	Failure Rate
1996	90.17	3.04	0.93	3.03	90.56	3.11	1.60	2.57
1997	91.95	2.56	1.85	2.52	91.18	3.24	1.66	2.67
1998	89.79	3.25	2.38	2.73	90.33	3.31	1.40	2.79
1999	92.19	2.68	1.37	2.64	91.87	3.56	1.60	2.64
2000	91.43	3.64	1.34	3.52	90.60	3.33	1.42	2.34
2001	89.76	3.83	1.16	3.78	91.25	3.09	1.18	2.26
2002	88.88	3.31	1.07	3.39	91.71	3.05	1.51	2.36
2003	89.31	3.19	1.31	3.13	91.39	3.21	1.34	2.37
2004	88.91	2.50	2.03	2.66	91.21	3.06	1.48	2.39
2005	89.94	2.87	1.54	2.54	n/a	n/a	n/a	n/a

