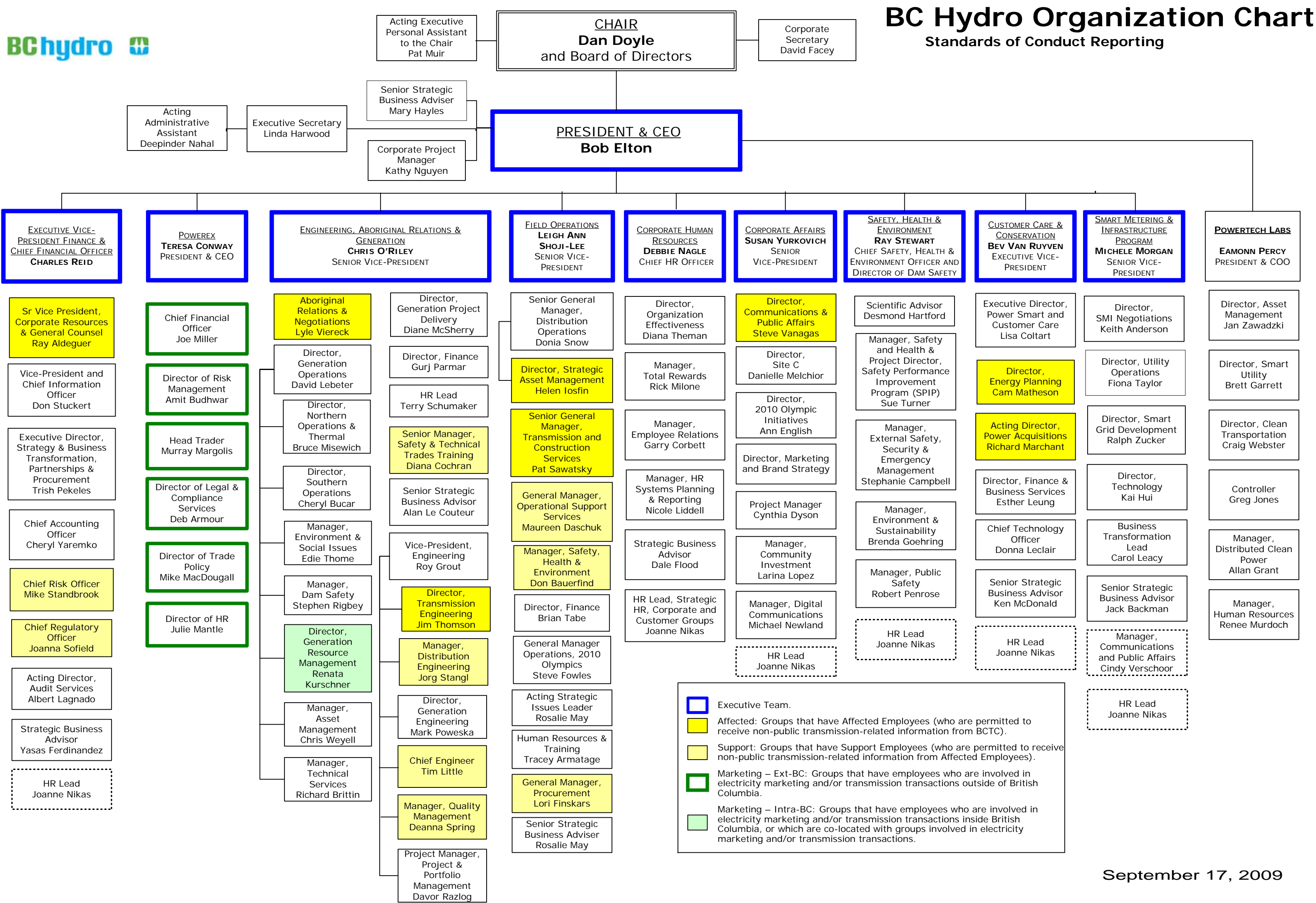




# BC Hydro Organization Chart

## Standards of Conduct Reporting



- Executive Team.
- Affected: Groups that have Affected Employees (who are permitted to receive non-public transmission-related information from BCTC).
- Support: Groups that have Support Employees (who are permitted to receive non-public transmission-related information from Affected Employees).
- Marketing – Ext-BC: Groups that have employees who are involved in electricity marketing and/or transmission transactions outside of British Columbia.
- Marketing – Intra-BC: Groups that have employees who are involved in electricity marketing and/or transmission transactions inside British Columbia, or which are co-located with groups involved in electricity marketing and/or transmission transactions.