

New West Kamloops Substation Project Update

JANUARY 2017

What are we building and why is it needed?

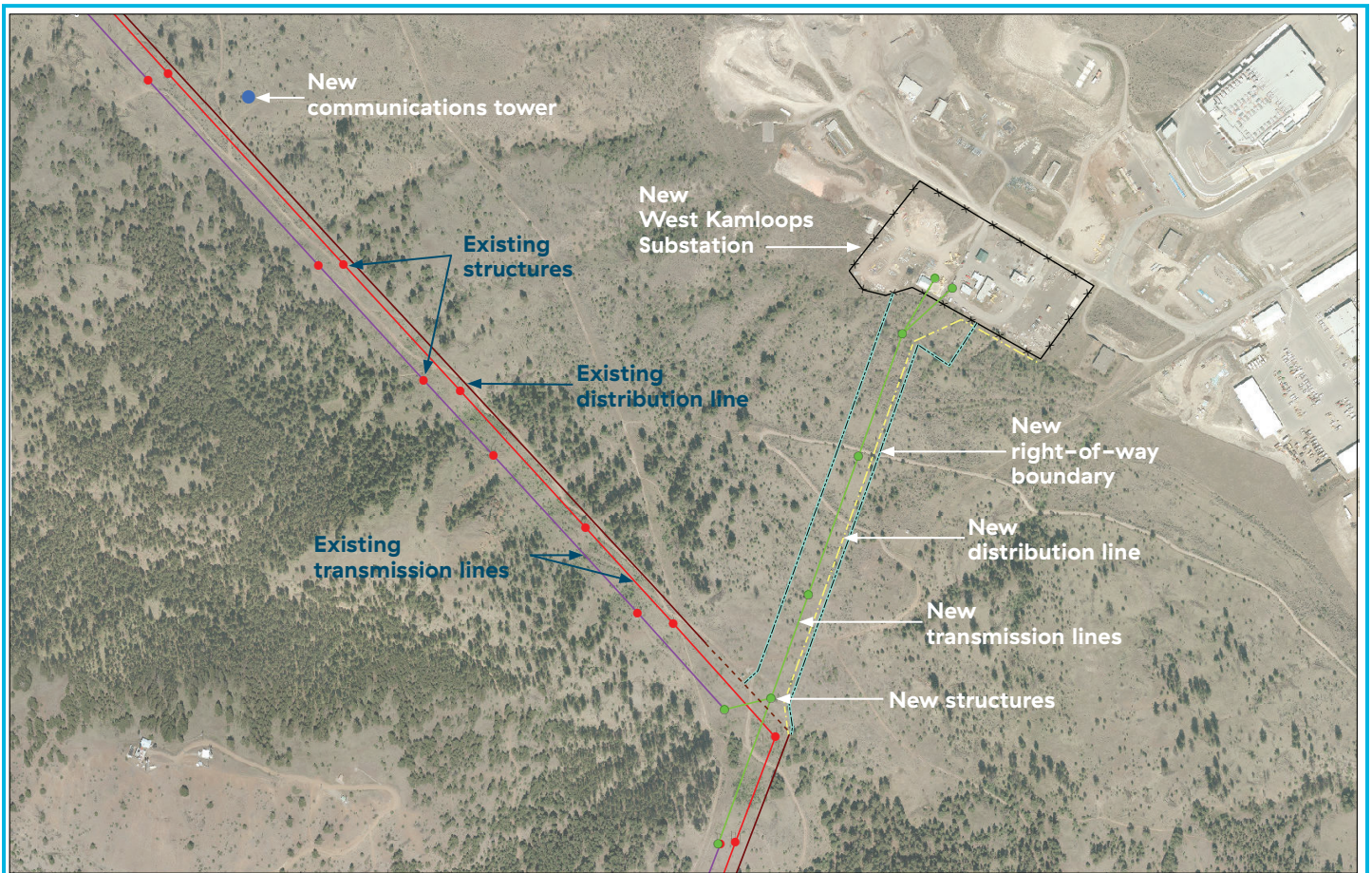
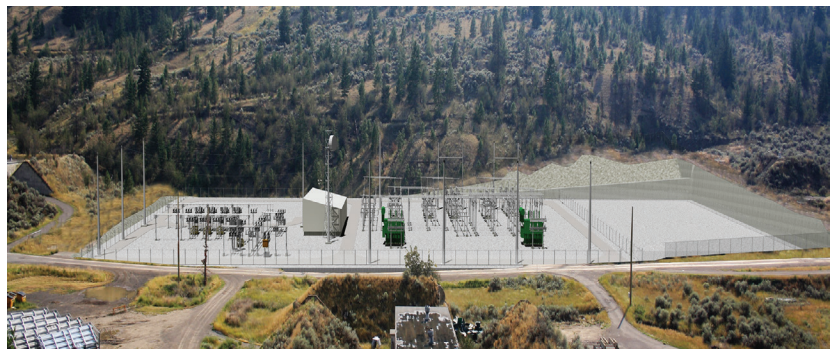
To help us meet growing demand for electricity in Kamloops, we're building a new substation in your area. The substation will be located off Bunker Road – adjacent to the City Works Yard and Kenna Cartwright Park (see map at right). Substations transform high voltage power to a lower voltage so it can be used in your homes and businesses.

What will it look like?

It will be an open-air substation with two transformers, electrical equipment, a control building and a communications tower. This photo model (looking southwest) shows what the substation will look like once completed.

What will happen in Kenna Cartwright Park?

New transmission and distribution lines will connect the new substation to the existing lines in Kenna Cartwright Park (see map below).



Depending on their location, the transmission structures will be made of either steel or wood and be between 30 to 35 metres tall. For the distribution line, we'll install wood poles approximately 15 to 20 metres tall.

For the transmission line, we'll install 4 structures along the new 500 metre right-of-way. The right-of-way has been designed to accommodate future transmission lines if needed.

We'll also replace 2 wood poles on the existing lines where the new lines connect.

A new 12 metre communications tower will also be installed in the park. This tower, along with a new tower at the substation and another at an existing substation about 4 km away, will make it possible for the new substation to communicate with the rest of our electricity system.

Tree and vegetation removal and pruning will be required within the right-of-way and for the communications tower.

How will we access the right-of-way in the Park during construction?

We'll access our new right-of-way mainly from the existing Reservoir Trail in Kenna Cartwright Park.

For the project, vegetation pruning and widening of some trails and other upgrades will allow for the safe movement of equipment and materials and the safe construction of the communications tower and power lines. Following construction, we'll restore the trails.

To further ensure the safety of construction crews and park users, the construction areas will be fenced. At times, we'll need to temporarily close trails. Construction notices will be posted in the Park to keep you updated on activities.

When will we start?

Activity	Planned Start
Substation site preparation	February 2017
Clearing of trees for the new lines and communications tower	March 2017
Substation start of construction	May 2017
Construction of the new lines	July/August 2017
Substation in-service	November 2018



Example of a steel structure



Example of a communications tower

Where can you find more information?

We'll post updated project information at bchydro.com/westkamsub.

If you have any comments or questions about this project, please email stakeholderengagement@bchydro.com or call our Stakeholder Engagement line: 1 866 647 3334.