

## Brocklehurst Substation: New Communications Tower

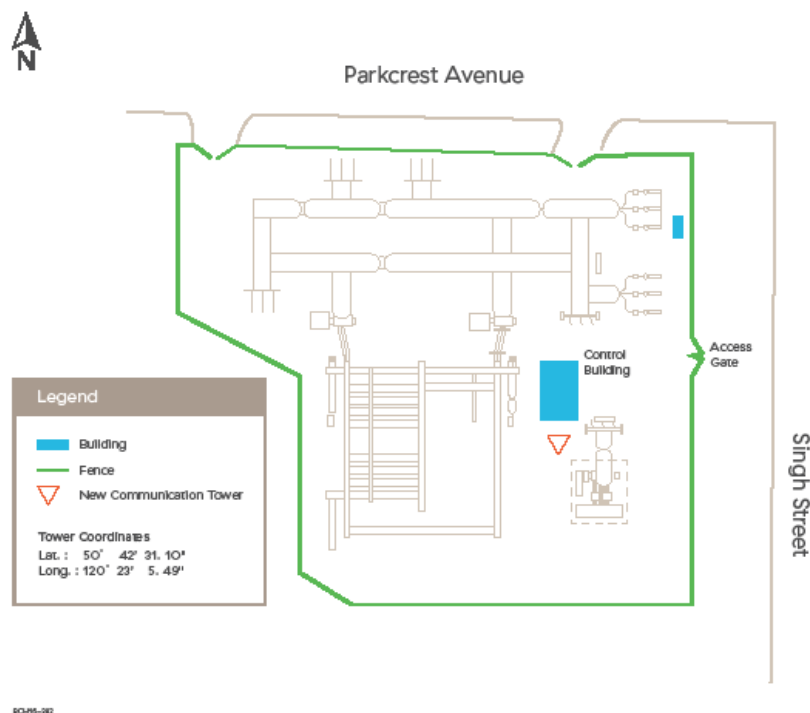
Dear Neighbour,

In the spring, we informed you that we're planning to build a new communications tower at Brocklehurst Substation located at Parkcrest Avenue and Singh Street in Kamloops.

We've now designed the tower and we're ready to begin the community consultation process as required by Innovation, Science, and Economic Development (ISED) Canada, formerly Industry Canada.

### Where will it be located?

The communications tower will be within our existing fenced substation next to the control building (LAT: 50° 42' 31.10" LONG 120° 23' 5.49").



The Brocklehurst Substation is a fully fenced substation. There'll be no accessible areas to the general public. All access points are locked.

### What will it look like?

The tower will be a lattice structure approximately 20 m tall with a 6 m lightning rod for a total height of 26 m. It will have two directional dish antennas, one 2 m and one 2.5 m in diameter installed at 17.5 m on the tower.

Please see the enclosed photo simulations. Using engineering drawings and a computer model, these photographs from three viewpoints in the community accurately show what the substation area currently looks like and what it will look like once the tower and equipment are built.

Transport Canada has informed us that no painting or lighting is required for the tower.

The installation of the communications tower will respect good engineering practices including structural adequacy and will comply with all related Canadian Codes and Standards.

### **Why do we need this new communications tower?**

We need to construct a communications tower at the Brocklehurst substation so we can communicate between the new West Kamloops Substation at Bunker Road near the City Works Yard (planned to be in construction January 2017) and the existing BC Hydro communication system.

There are no existing towers or structures in the Brocklehurst substation that are tall enough for the signal we need to send in order to connect with the new West Kamloops substation.

Communications towers allow our substations to communicate with the rest of our electricity system. We use them to monitor and manage equipment, and make sure everything is working safely and reliably. We'll also build a communications tower at the new substation and one in Kenna Cartwright Park for the connection with this tower at the Brocklehurst substation.

### **What is the consultation process?**

We are providing project information for comment to the nearby community, ISED and the City of Kamloops. The City of Kamloops does not have municipal processes or protocols for the installation of communications towers. We're following the ISED process, *Radiocommunication and Broadcasting Antennas systems (CPC-2-0-03)*.

The required notification area for this tower is three times its height (60 m) which did not include very many neighbours. We have chosen to exceed that notification area to include more nearby people. Any inquiries that are received during this notification will be responded to and submitted to the City of Kamloops and ISED.

This information as well as information regarding the new substation can be found on the project website at [www.bchydro.com/westkamsub](http://www.bchydro.com/westkamsub).

Information on the ISED Consultation process as well as general information on antenna systems is available on ISED's Spectrum Management and Telecommunications website at [www.ic.gc.ca/towers](http://www.ic.gc.ca/towers).

### **Will it be in compliance with Health Canada's Safety Code 6?**

ISED requires that all communications towers operate in accordance with Health Canada's safety standards. We confirm that the communications tower described in this notification package will be installed and operated on an ongoing basis to comply with Health Canada's Safety Code 6, as may be amended from time to time, for the protection of the general public, including any combined effects of nearby installations within the local radio environment.

**Does it require any environmental reviews?**

Environmental studies (e.g. wildlife, vegetation, aquatics, archaeology, soils) have been conducted and no major environmental concerns have been identified. The project does not have any requirements under the Canadian Environmental Assessment Act.

**When would it be built?**

This consultation process needs to be completed and all requirements for ISED and Transport Canada have to be met before we're able to begin construction of the communications tower. At this time, we've scheduled construction to start in the spring of 2017. Construction is planned to take about four months.

**If you want to know more or provide comments ...**

If you have questions regarding the tower or would like to provide comments, please provide them in writing within 30 days of receiving this notice. All written inquiries must be submitted no later than November 9, 2016.

**Contact Information:****BC Hydro**

Lea Anne Sexton  
Stakeholder Engagement Consultant  
[stakeholderengagement@bchydro.com](mailto:stakeholderengagement@bchydro.com)  
Phone: 1 866 647 3334  
Fax: 604 623 3937  
333 Dunsmuir Street  
Vancouver, BC V6B 5R3  
[www.bchydro.com/westkamsub](http://www.bchydro.com/westkamsub)

**City of Kamloops**

David W. Freeman  
Assistant Director, Development & Engineering Services  
[dfreeman@kamloops.ca](mailto:dfreeman@kamloops.ca)  
Phone: 250 828 3548  
Fax: 250 828 3848  
City of Kamloops  
105 Seymour Street  
Kamloops B.C. V2C 2C6  
[www.kamloops.ca](http://www.kamloops.ca)

**Local Industry Canada Office**

Mike Amyotte  
Okanagan-Kootenay Office  
[ic.spectrumkelowna-kelownaspectre.ic@canada.ca](mailto:ic.spectrumkelowna-kelownaspectre.ic@canada.ca)  
1726 Dolphin Avenue, Room 603  
Kelowna BC V1Y 9R9  
Phone: 250 470 5026 or 1 800 667 3780  
Fax: 250 470 5045  
[www.ic.gc.ca/towers](http://www.ic.gc.ca/towers)

Regards,



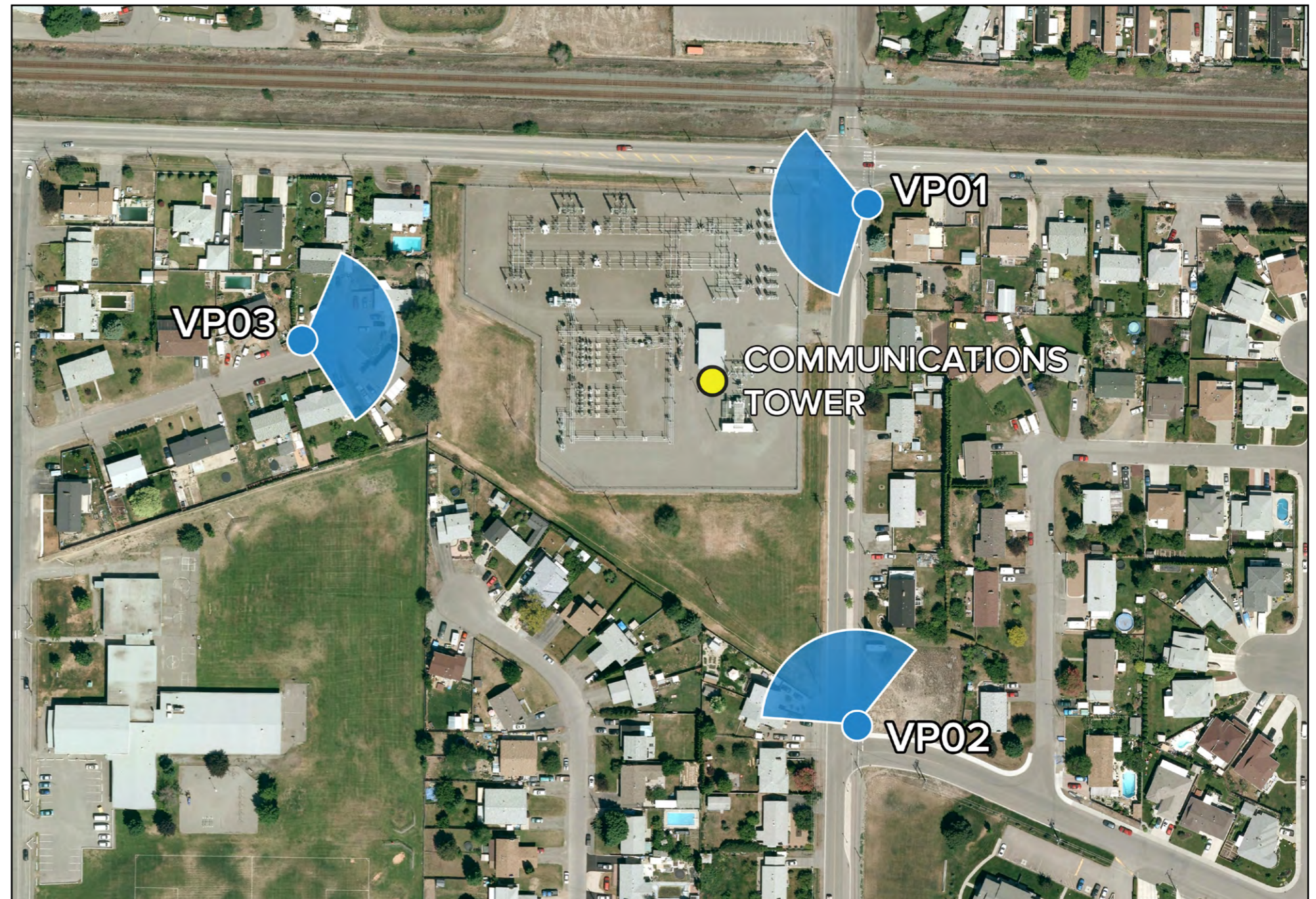
Lea Anne Sexton  
Stakeholder Engagement Consultant

## Viewpoint Locations

**Viewpoint 01** - Singh Street and Parkcrest Ave

**Viewpoint 02** - Singh Street and Lethbridge Ave

**Viewpoint 03** - Cul-de-sac, Centennial Drive






**Viewpoint 01** - Singh Street and Parkcrest Ave, Looking West - **Existing View**



**Viewpoint 01** - Singh Street and Parkcrest Ave, Looking West - **Proposed View**

For on-screen display:  
Scale bar to be 4 inches (101.6mm wide)  
Viewing distance is 19.7 inches (50 cm)




**West Kamloops Substation**

**Viewpoint 01**

Singh Street and Parkcrest Ave


Viewpoint Location

Project Area



Easting Position (UTM Zone 10):	684696.4
Northing Position (UTM Zone 10):	5620757.9
Elevation of Photo Point Position (WGS84):	348.7
Height of Camera Above Ground (m):	1.65
Date of Photography:	26 August 2016 at 9:57am
Orientation of View:	W
Horizontal Field of View:	124°
Vertical Field of View:	55°
Distance from Tower:	90m

3D MODEL



NOTES:

Viewpoint locations have been precision surveyed by:

**McElhanney Associates Land Surveying Ltd.**  
www.mcelhanney.com  
710 Laval Crescent | Kamloops BC V2C 5P3  
Tel. 250-374-2200

No part of this photo simulation shall be altered in any way.

Visual assessments should be made from the full size TrueView™ only.

Photo Simulation Created Using  
TrueView™ Technology  
(Patent No.: US 8,184,906 B2)

Provided by

**Truescape®**

www.truescape.com

DATE	02 September 2016
SHEET	2




Viewpoint 02 - Singh Street and Lethbridge Ave, Looking North-Northwest - Existing View



Viewpoint 02 - Singh Street and Lethbridge Ave, Looking North-Northwest - Proposed View

For on-screen display:  
Scale bar to be 4 inches (101.6mm wide)  
Viewing distance is 19.7 inches (50 cm)




West Kamloops Substation

Viewpoint 02

Singh Street and Lethbridge Ave


Viewpoint Location

Project Area



Easting Position (UTM Zone 10):	684698.4
Northing Position (UTM Zone 10):	5620560.0
Elevation of Photo Point Position (WGS84):	351.5
Height of Camera Above Ground (m):	1.65
Date of Photography:	26 August 2016 at 10:10am
Orientation of View:	NNW
Horizontal Field of View:	124°
Vertical Field of View:	55°
Distance from Tower:	142m

3D MODEL



NOTES:

Viewpoint locations have been precision surveyed by:

**McElhanney Associates Land Surveying Ltd.**  
www.mcelhanney.com  
710 Laval Crescent | Kamloops BC V2C 5P3  
Tel. 250-374-2200

No part of this photo simulation shall be altered in any way.

Visual assessments should be made from the full size TrueView™ only.

Photo Simulation Created Using  
TrueView™ Technology  
(Patent No.: US 8,184,906 B2)

Provided by

**Truescape®**

www.truescape.com

DATE	SHEET
02 September 2016	3



Viewpoint 03 - Cul-de-sac, Centennial Drive, Looking East - Existing View



Viewpoint 03 - Cul-de-sac, Centennial Drive, Looking East - Proposed View

For on-screen display:  
Scale bar to be 4 inches (101.6mm wide)  
Viewing distance is 19.7 inches (50 cm)

West Kamloops Substation

Viewpoint 03  
Cul-de-sac, Centennial Drive

Viewpoint Location

Project Area

Easting Position (UTM Zone 10):

684479.7

Northing Position (UTM Zone 10):

5620698.0

Elevation of Photo Point Position (WGS84):

350.7

Height of Camera Above Ground (m):

1.65

Date of Photography:

26 August 2016 at 10:50am

Orientation of View:

E

Horizontal Field of View:

124°

Vertical Field of View:

55°

Distance from Tower:

160m

3D MODEL

NOTES:  
Viewpoint locations have been precision surveyed by:  
**McElhanney Associates Land Surveying Ltd.**  
www.mcelhanney.com  
710 Laval Crescent | Kamloops BC V2C 5P3  
Tel. 250-374-2200  
  
No part of this photo simulation shall be altered in any way.  
  
Visual assessments should be made from the full size TrueView™ only.

Photo Simulation Created Using  
TrueView™ Technology  
(Patent No.: US 8,184,906 B2)  
  
Provided by  
**Truescape®**  
  
www.truescape.com

DATE  
02 September 2016

SHEET  
4