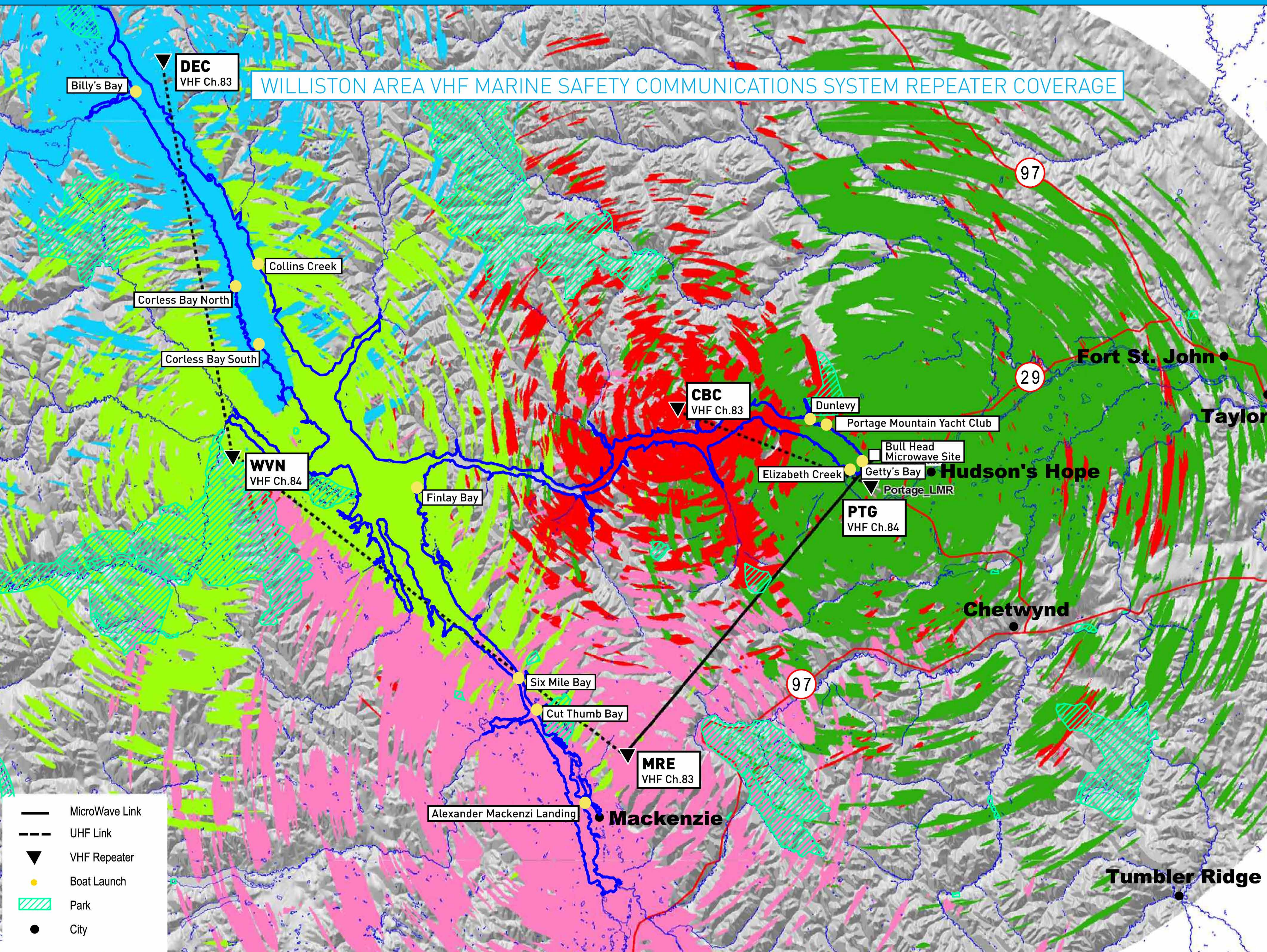


WILLISTON RESERVOIR EMERGENCY RADIO SERVICE



CONTACT NUMBERS:

RCMP Fort St. John	250 787 8100
RCMP Mackenzie	250 997 3288
RCMP Hudson's Hope	250 783 5241
RCMP Chetwynd	250 788 9221
Fort St. John Hospital	250 262 5200
Mackenzie District Hospital	250 997 3263
Chetwynd General Hospital	250 788 2236
Emergency	911

INSTRUCTIONS:

- Keep radio tuned to proper audio channel at all times
- If you hear a distress call please verify the emergency with caller and contact relevant authorities, provide as much information as possible regarding the **nature** and **location** of the emergency
- If you or someone in your party is in distress, call out with the above information
- If you are not receiving a signal try changing locations and/or switching between channels
- You are welcome to use this system as a courtesy safety check-in service by contacting the Marine Safety Monitor on the appropriate radio channel

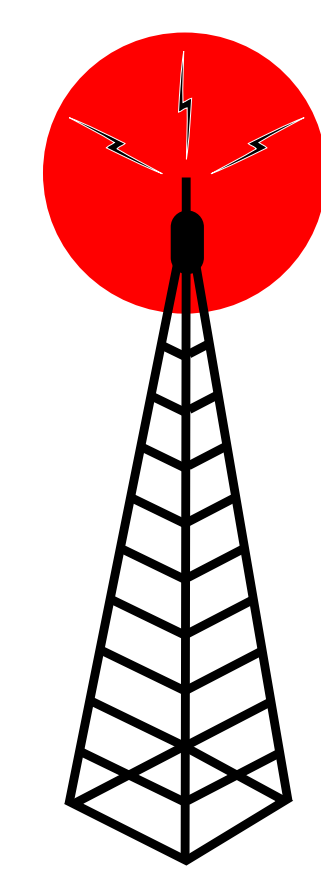
RULES:

- For safety-check-ins, reporting hazards, and emergency use only
- Keep it short, the system runs on solar power and lengthy conversations may drain the systems' power supply

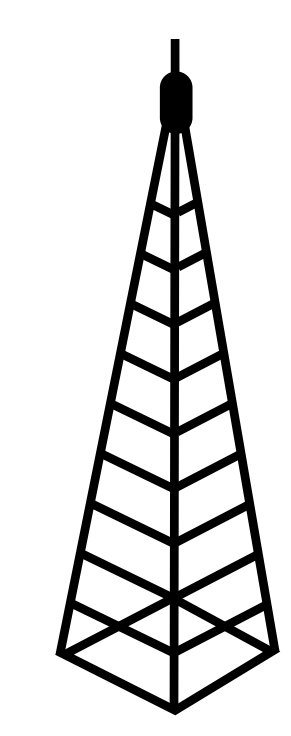
MOBILE FREQUENCY:

Ch.83 (Tx/Rx): 157.175/161.775 MHz

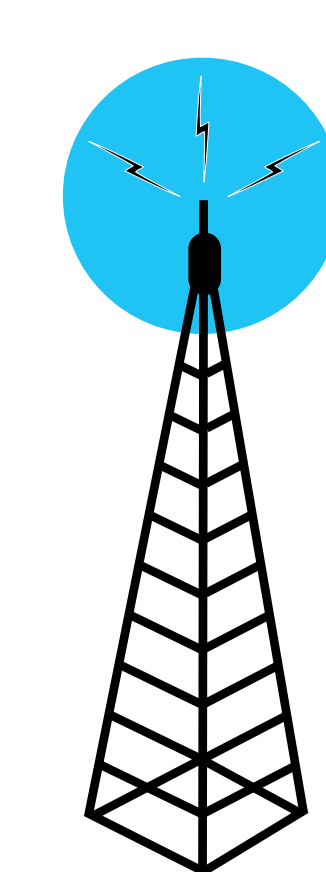
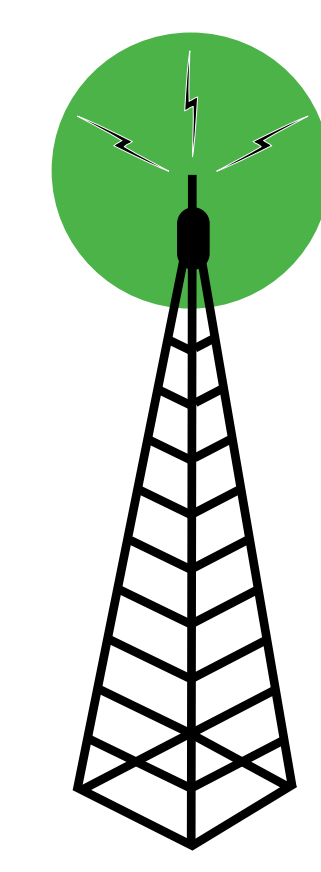
Ch.84 (Tx/Rx): 157.225/161.825 MHz



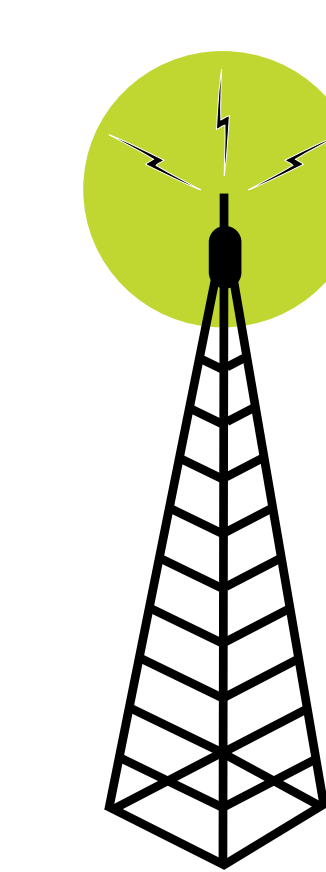
46km Path



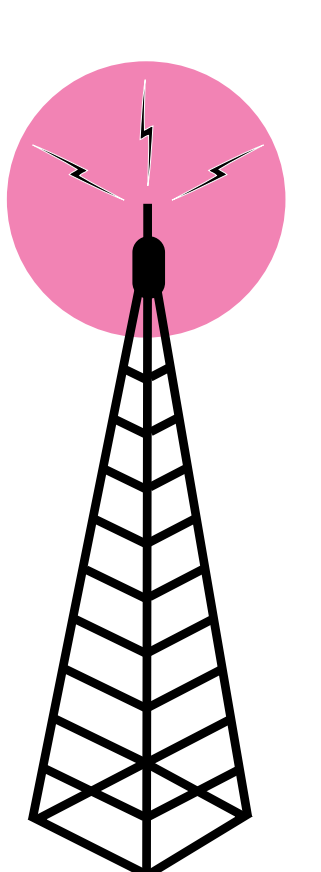
7km Path



92km Path



113km Path



CBC
Carbon Creek Repeater
VHF Ch.83
56 08 38N-122 51 05W
Solar Powered
Covers the Peace Reach
Arm Area

BLH
Bullhead Microwave Site
No VHF Ch.
56 02 41N-122 07 59WAC
AC Powered
Linking Site Only, No
Coverage

PTG
Portage Mnt Repeater
VHF Ch.84
55 59 06N-122 08 38W
Solar Powered
Covers Dinosaur Lake
and GMS Areas

DEC
Deception Repeater
VHF Ch.83
56 50 40N-134 46 16W
Solar Powered
Covers North end of
Williston Lake

WVN
Wolverine Repeater
VHF Ch.84
56 02 17N-124 28 54W
Solar Powered
Covers Central part of
Williston Lake

MRE
Morfee Microwave Site
VHF Ch.83
55 25 48N-123 02 01W
AC Powered
Covers South end of
Williston Lake and
McKenzie Arm

Notice: This system is intermittently monitored and is for safety and emergency use only. Radio signal strength and coverage varies. Monitoring and radio coverage outages may occur. This system is not a replacement for following proper safety policies or procedures. Please ensure you let others know when and where you are going to be prior to departure. BC Hydro is not liable for any personal loss, injury or death due to system failure or fault.