

Integrated Resource Plan

Appendix 3A-15






2013 Resource Options Report Update

Resource Options Mapping (ROMAP) Report

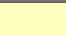






**Report Attachment:
Figure 2-9 – Potential Solar**



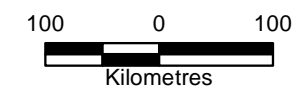
Legend

-  Legally Protected Area
-  Glacier
-  BC Hydro Transmission Line
-  Proposed NTL
-  Hypothetical Solar PV Locations

**Annual PV Potential
(kWh/kW)**

-  779 - 800
-  800 - 900
-  900 - 1,000
-  1,000 - 1,100
-  1,100 - 1,200
-  1,200 - 1,300
-  1,300 - 1,400

Source: BC Hydro IRP, 2010.
 Natural Resources Canada Solar
 Resources Maps, June 2006

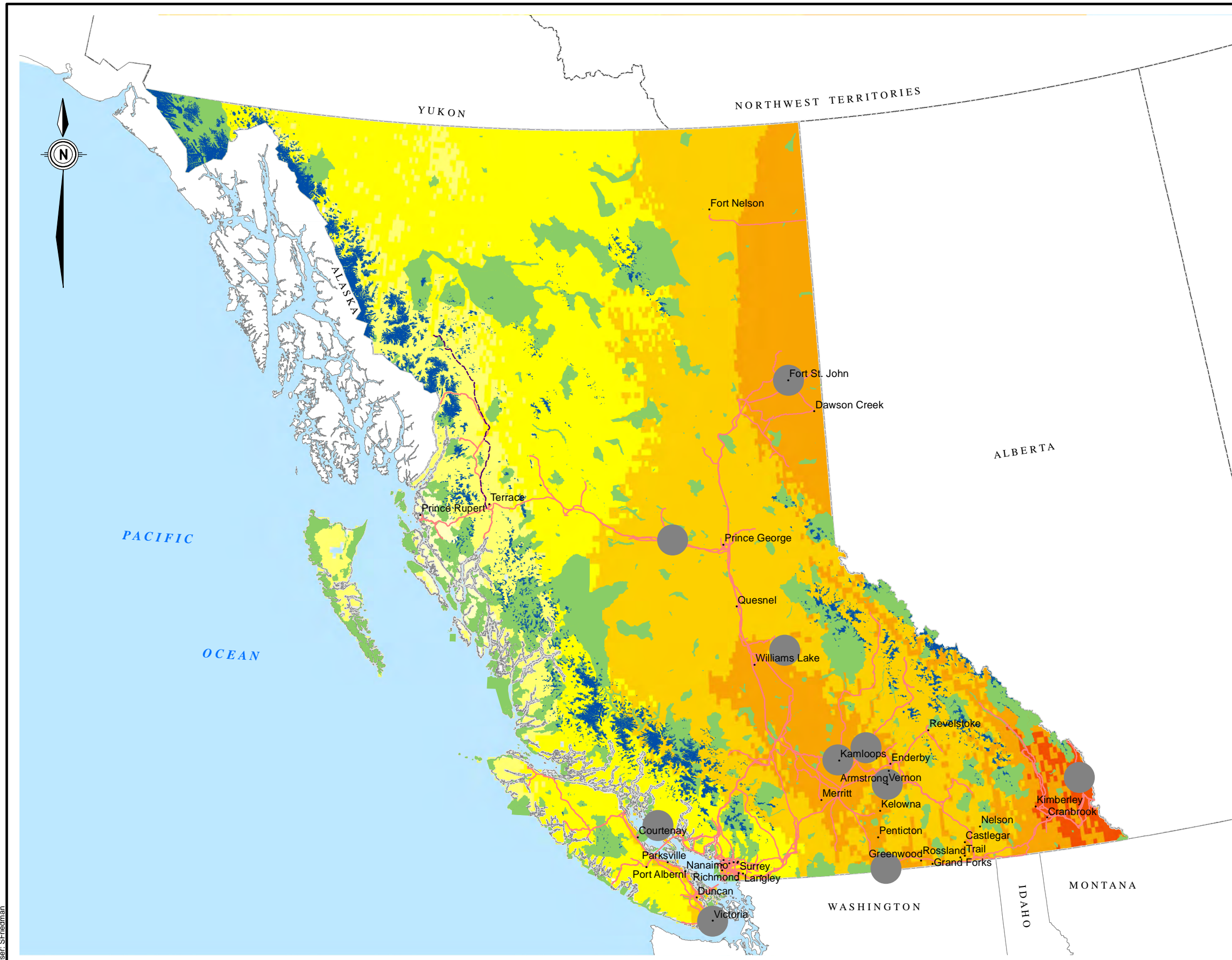


Project No.
478-098

Date
May 2011

Potential Solar

Figure 2-9



Path: \\libra25\0000-0998\0400-0499\478-098\430-GIS\MXD-Rp\478098\Figure2-9.mxd Date Saved: 05/05/2011 9:49:08 AM
 User: SFriedman