

Pemberton Substation Rebuild Project

February 2023

Agenda

- Pemberton Substation Overview
- Substation site
- Key Considerations
- Impacts and Mitigation
- First Nations Consultation
- Next Steps
- Communications

Project Overview



Substation Background

- In Service since the 1970s
- Serves more than 3,600 customers in Pemberton and Sea-to-Sky region
- Supplied with electricity from one 230 kV transmission line from Bridge River generating facilities in Shalalth.

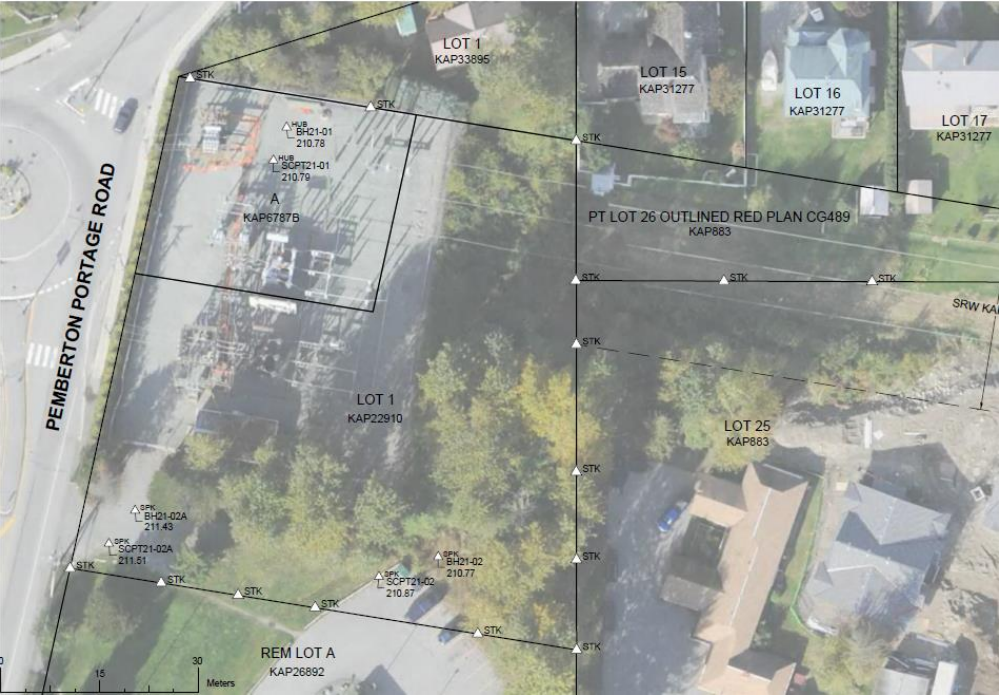
Project goals



We're planning to rebuild the substation in order to:

- Replace equipment near end-of-life.
- Remove electrical equipment containing PCBs.
- Improve station layout for future upgrades.

Pemberton Substation Site

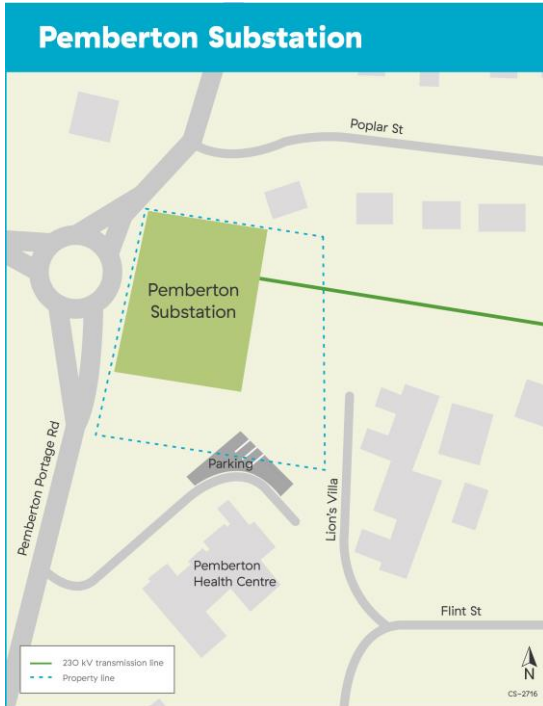


Key Considerations

Rebuilding a substation is a complex process.

- Ensuring a continued reliable supply of power
- Environment factors
- Safety requirements
- Engineering constraints
- Cost

Impacts and Mitigation: Property



The project will require an expansion within existing property lines

This will include:

- Vegetation removal around the substation
- Moving several Pemberton Health Centre parking stalls.

Impacts and Mitigation: Studies

The following desktop and field studies are underway or completed:

- Property Survey (complete)
- Archeological Impact Assessment (complete)
- Soil Characterization (underway)
- Geotechnical Investigations (underway)
- Wildlife and Vegetation Studies (underway)

Construction



View from Pemberton Portage Road near Portage Road, looking north. Substation is to the right.

Working to minimize impacts:

- Traffic Management Plan
 - Avoid peak periods
 - Health Centre access
- Construction
 - Minimize noise
- Vegetation
 - Clearing only vegetation that is required

Construction

Planned outages will be part of our work



First Nations

Consultation

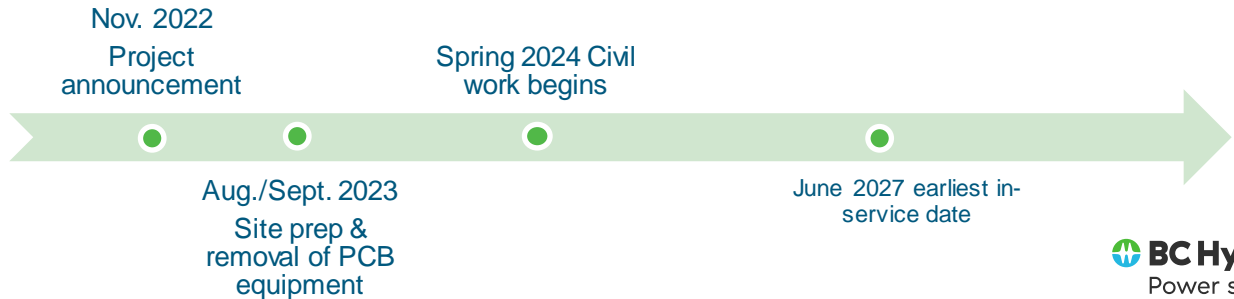
- Consultation began in early 2022 and included:
 - A project information fact sheet
 - Engagement in early field work
 - An Archeological Impact Assessment
- We're collaborating with Lil'wat Nation as directed through our protocol with St'át'imc Nation to understand and address their interests throughout the life of the project and find opportunities for their participation in work at different stages.

Next steps

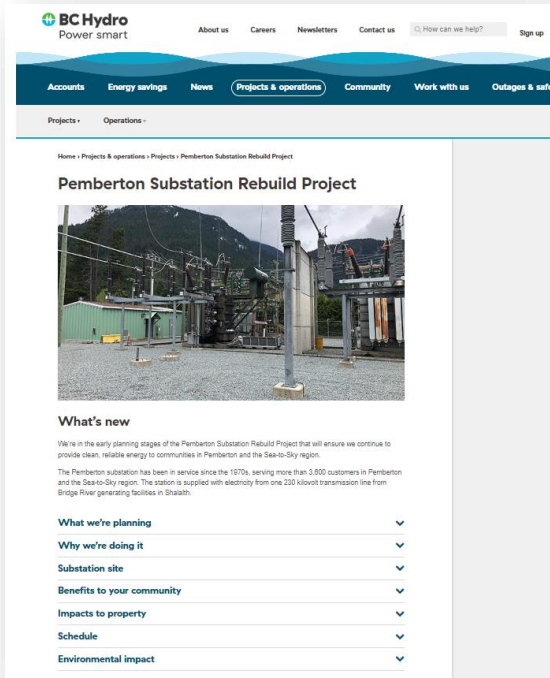
We are in the early planning stages of this project.

From now to the end of 2023, we anticipate completing the following:

- Geotechnical investigations, soil characterization, and wildlife and vegetation studies
- Substation design



Communications and ongoing engagement



We will communicate project work in:

- Local ads
- Open house (March)
- Project one-pagers
- Delegations to local governments
- www.bchydro.com/pemberton

To sign up for updates or to send us questions, email projects@bchydro.com



Questions?