

Access & Accommodations Studies

ABOUT THE STUDIES

- BC Hydro is undertaking two studies to assess the transportation, access, and worker accommodation needs for BC Hydro projects planned at facilities in the Bridge River region and the LaJoie Dam.
- These studies are in the early stages, starting with data collection from technical sources, St'át'imc Nation representatives, stakeholders, and the public.

PURPOSE OF TODAY'S OPEN HOUSE

- Introduce the two Access & Accommodations Studies and the Consultant Team
- Share information on worker forecasts for current capital plan
- Gather feedback from local residents about potential impacts in the region

CONSULTANT TEAM

KGS GROUP

Project Management and Accommodation Planning

ASSOCIATED ENGINEERING (AE)

Transportation Planning and Evaluation

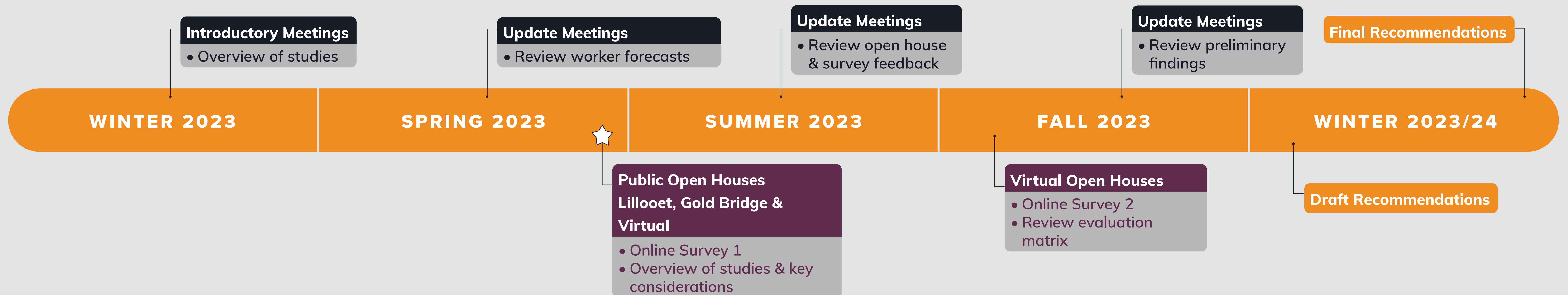
WSP

Terrain Hazard Mapping Assessment

SCATLIFF + MILLER + MURRAY

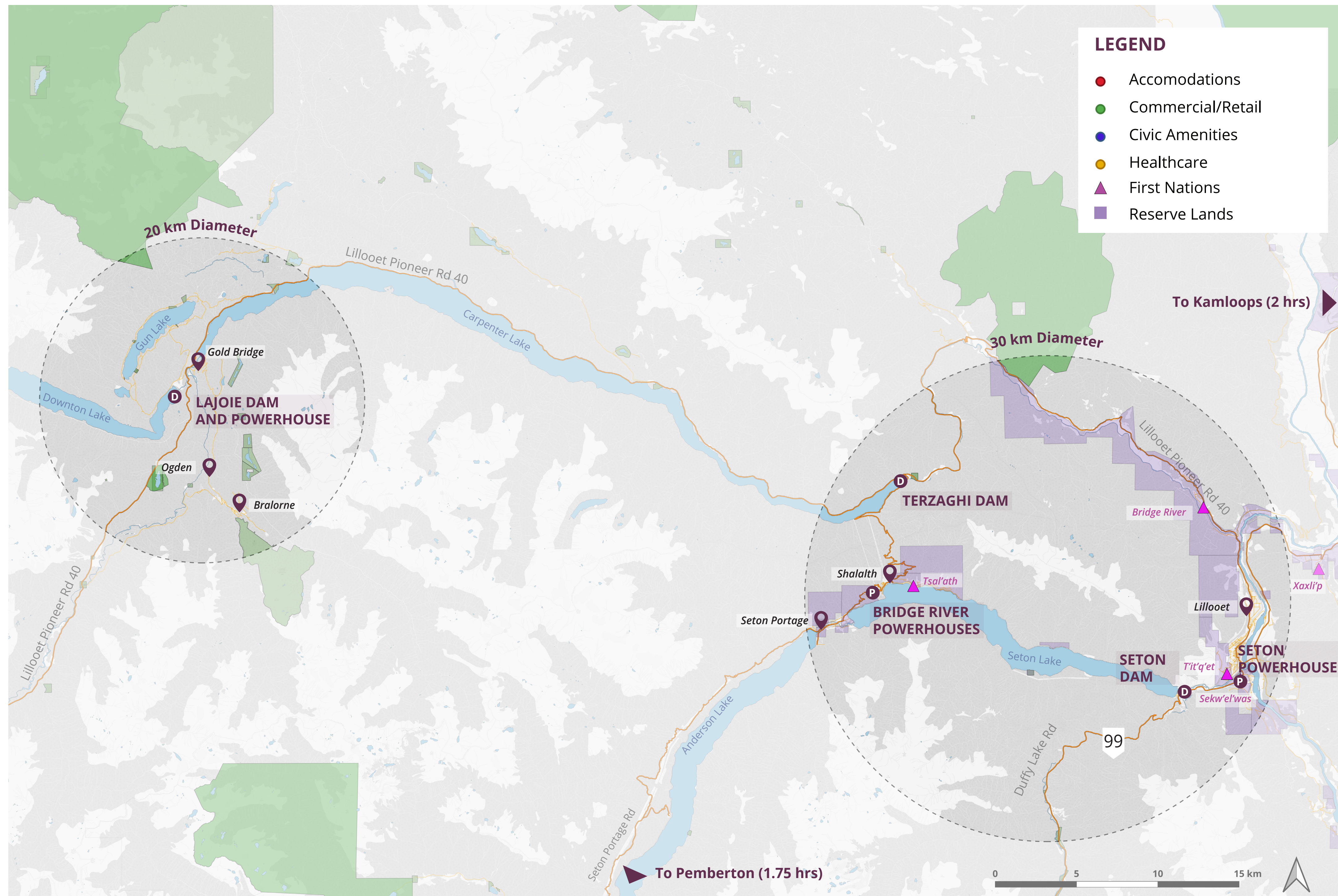
Accommodation Planning and Engagement

STUDY TIMELINE



Overview of Studies

STUDY AREAS



WHAT ARE THE STUDIES?

- BC Hydro is planning a series of **major infrastructure projects at facilities in the Bridge River region and the Lajoie Dam.**
- Our Consultant team will be conducting two **Access & Accommodation Studies** for BC Hydro to assess the transportation, access, and worker accommodation needs for these projects. The studies will also consider potential social and economic impacts and business opportunities related to local community objectives.

WHAT REGIONS ARE IN EACH STUDY?

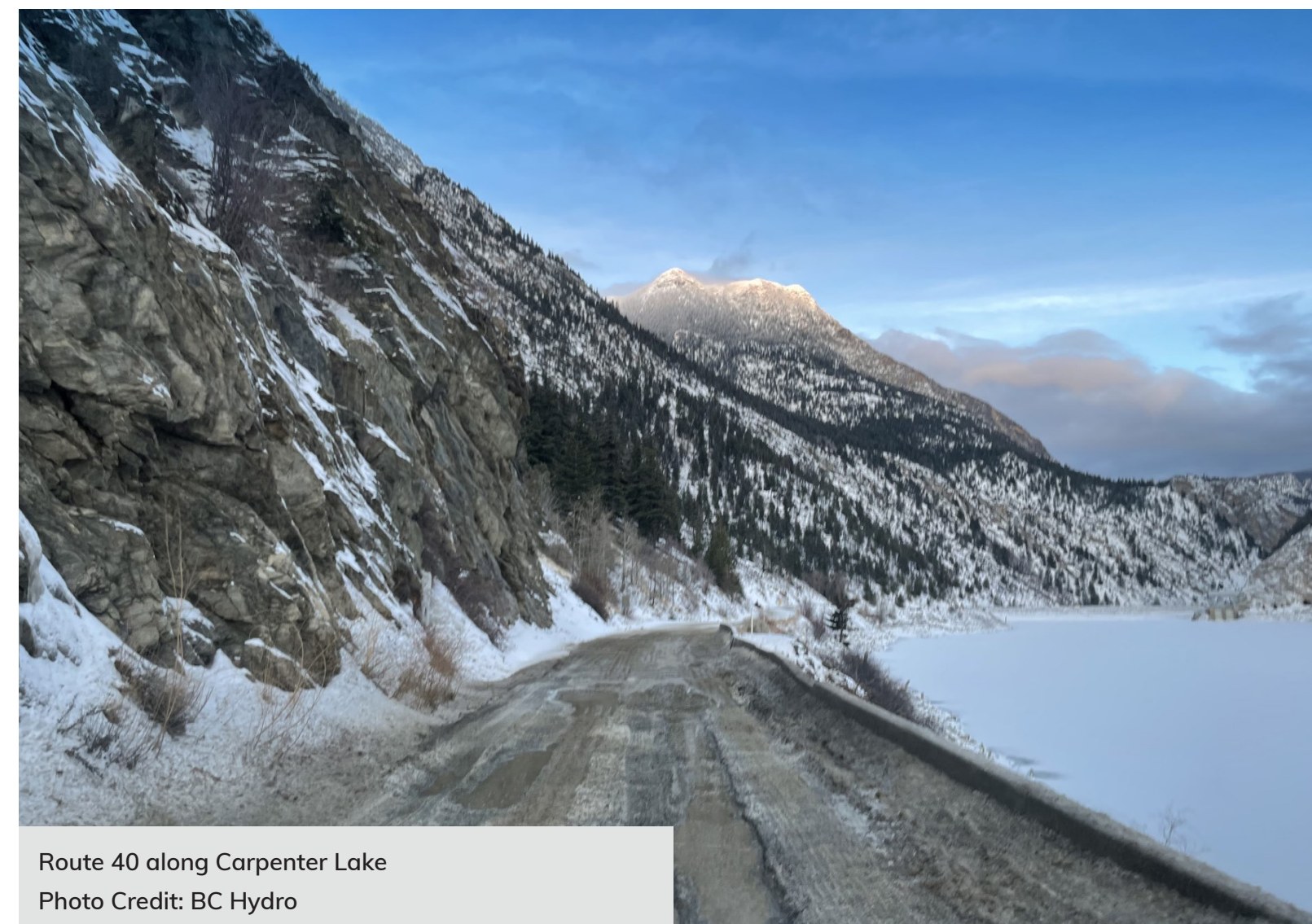
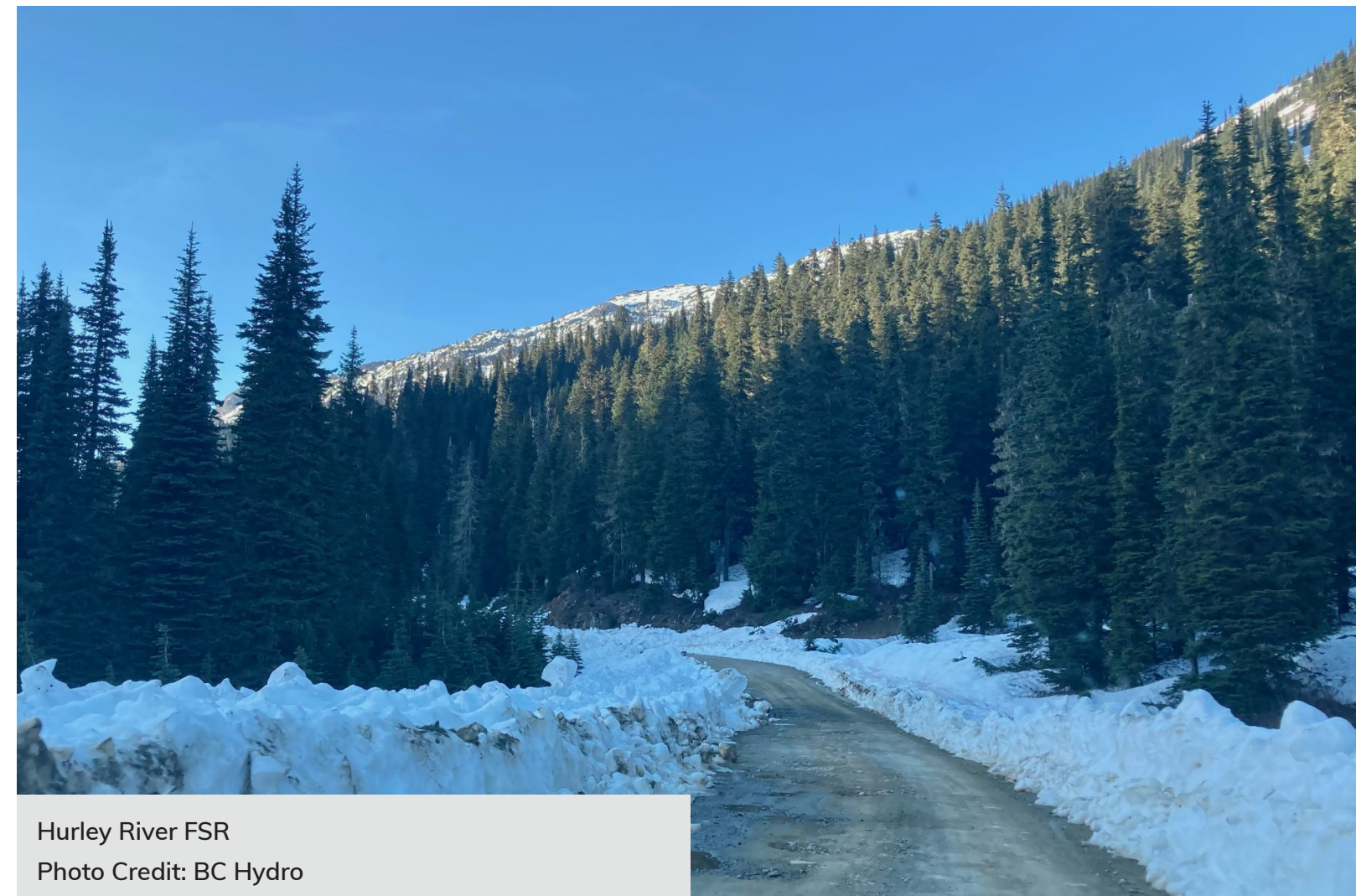
- One study will focus on projects at the **Seton, Terzaghi and Bridge River facilities**, and transmission projects in the region.
- One study will focus on the **Lajoie Dam Improvement** project.

HOW FAR ALONG ARE THE STUDIES?

- We are in the **early stages, collecting background data** to assess the **current conditions** and evaluate options for site access and accommodations.
- **Local input and considerations** are critical sources of data, helping to highlight key issues, concerns, and potential opportunities.

Access & Transportation

CURRENT CONDITIONS



STUDY SCOPE

We will be evaluating options for project site access. Our review will consider:

- Existing roadway conditions
- Safety and slope stability issues
- Maintenance practices
- Planned road improvements
- Existing load ratings

Our team will also be:

- Completing a terrain hazard mapping assessment
- Developing models for anticipated traffic volumes and patterns for upcoming BC Hydro projects

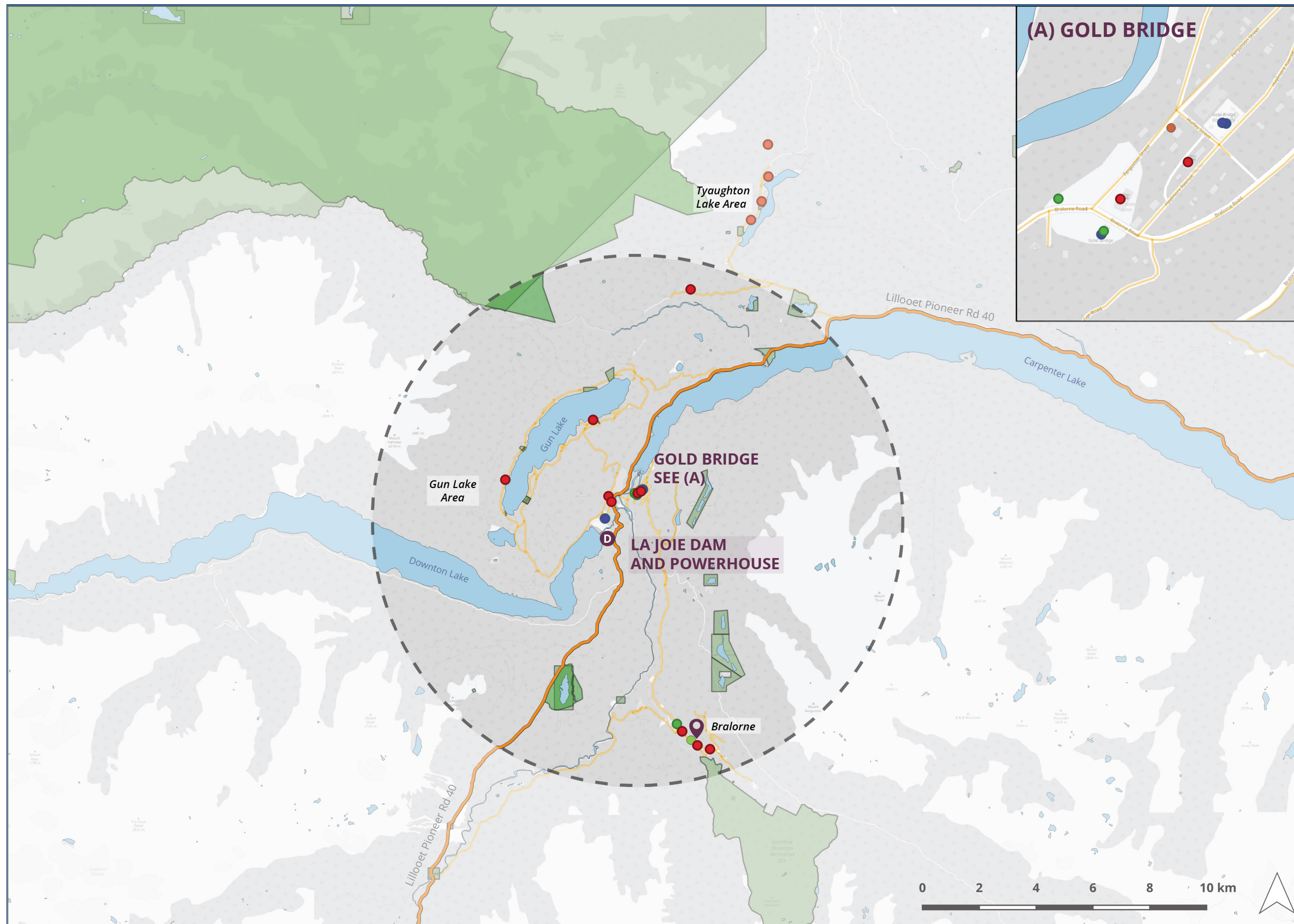
- Reviewing current traffic volumes and travel routes to understand how construction traffic may impact local communities
- Assessing options for transporting equipment, materials, and people to and from work sites
- Analyzing feedback from the public to better understand local interests and concerns related to:
 - community travel needs
 - road safety and terrain concerns
 - protection of sensitive sites and controlling access
 - road user conduct
- Developing recommendations for potential road improvements

MAIN TRAVEL ROUTES

- **Route 40:** 105km partially paved two-lane roadway, narrow lanes, steep grade, tight corners, landslides and rockfall often occur, used heavily by logging trucks and other industrial traffic.
- **The Hurley River Wilderness Road:** 74km dirt road, narrow two-lanes, only accessible in the summer, primarily a logging route.
- **Mission Mountain:** 8.4km unpaved road, narrow, steep grades, hairpin turns, mainly single lane, steep “drop-offs” along road edge, rockfall and landslide hazards.
- **Highline Road:** 10.8km unpaved road, rough terrain, requires 4x4, single lane, often minimal shoulder, steep “drop-offs” along road edge, rockfall and landslide hazards.

Accommodations | Upper Bridge River Valley

UPPER BRIDGE RIVER VALLEY AREA MAP



KEY CONSIDERATIONS

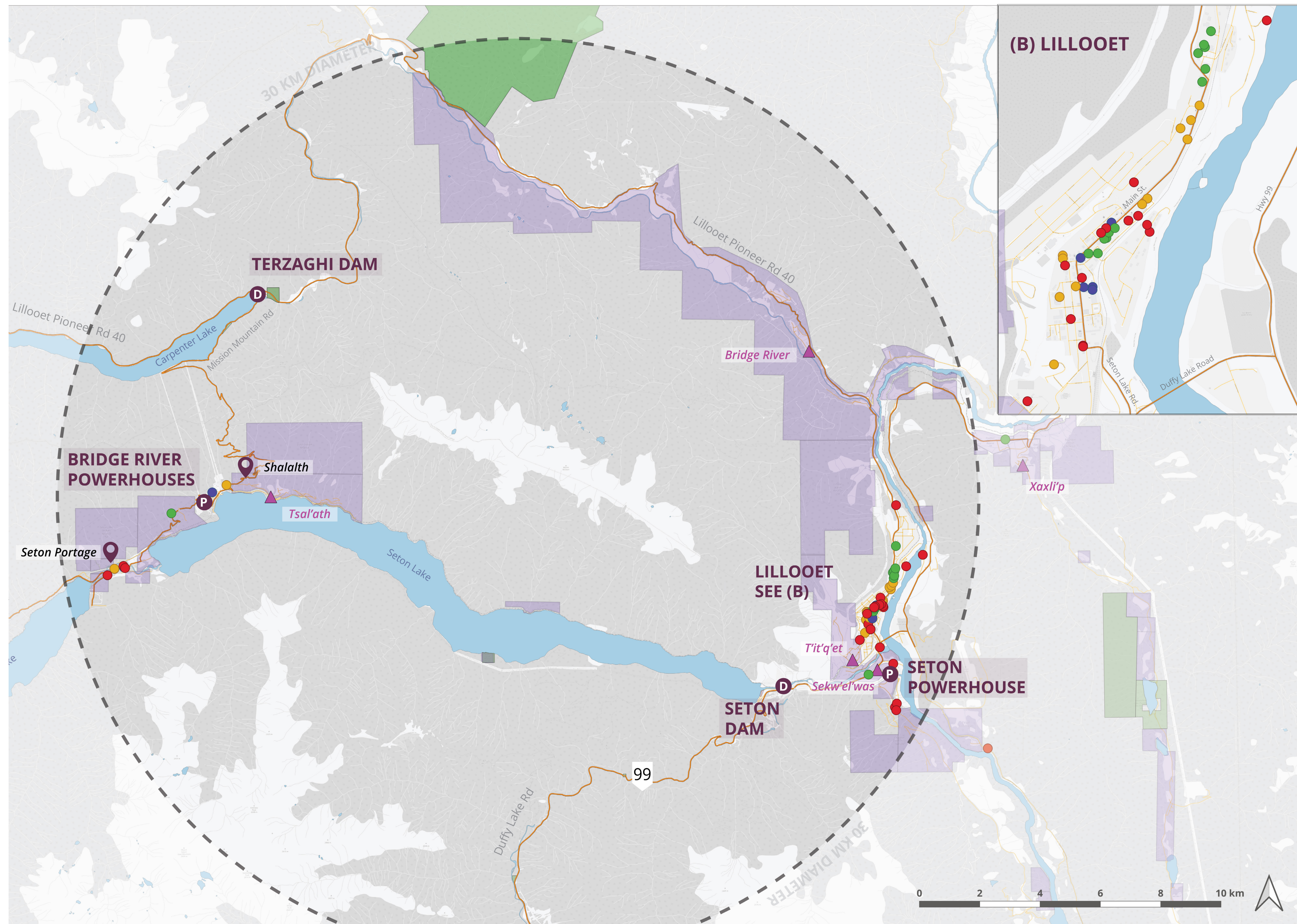
- Capacity of local infrastructure (e.g., sewer, water, telecommunications)
- Potential impacts to tourism sector/seasons
- Potential impacts to rental market
- Potential social impacts associated with influx of temporary workers
- Increase in local spending

EXISTING AMENITIES

- **ACCOMMODATIONS**
 - 16 Accommodation Sites
- **COMMERCIAL / RETAIL**
 - 8 Restaurants / cafes
 - 2 Grocery Stores
 - 1 Gas Station
- **CIVIC AMENITIES**
 - 1 Community Club/Recreation Centre
 - 2 Post Offices
 - 1 Library
 - 1 Ambulance Station

Accommodations | Bridge River

BRIDGE RIVER AREA MAP



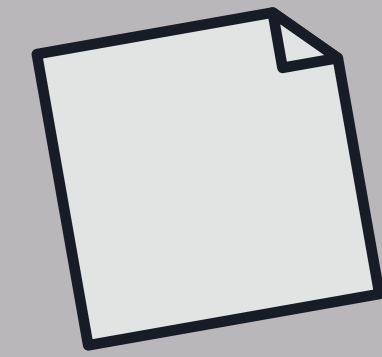
KEY CONSIDERATIONS

- Capacity of local infrastructure (e.g., sewer, water, telecommunications)
- Potential impacts to tourism sector/seasons
- Potential impacts to rental market
- Potential social impacts associated with influx of temporary workers
- Increase in local spending

EXISTING AMENITIES

- | | |
|---|--|
| <ul style="list-style-type: none"> ● ACCOMMODATIONS • 26 Accommodation Sites | <ul style="list-style-type: none"> ● CIVIC AMENITIES • 2 Recreation Centres • 2 Post Offices • 2 Libraries • 2 Ambulance Stations • 2 Fire Stations • 1 Police Station |
| <ul style="list-style-type: none"> ● COMMERCIAL / RETAIL • 9 Restaurants / Cafes • 5 Grocery Stores • 1 Liquor Store • 1 Pharmacy • 2 Hardware Stores • 4 Clothing Stores • 4 Gas Stations | <ul style="list-style-type: none"> ● MEDICAL SERVICES • 1 Hospital • 1 Dentist • 1 Optometrist • 2 Walk-in Clinics • 1 Chiropractor / Massage |

Tell Us What You Think



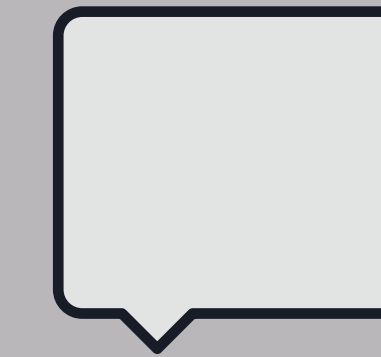
LEAVE US A NOTE.

Leave us a note on the presentation boards or the maps on the tables



FILL OUT A SURVEY.

Fill out the survey online by using the QR code or ask us for a hardcopy



STRIKE UP A CHAT.

Subject matter experts are on hand to talk about the project

What are the potential **transportation impacts** that you, or others you know, may experience as a result of the incoming workers to the area? These impacts can be positive or negative.

What are the potential **accommodations impacts** that you, or others you know, may experience as a result of the incoming workers to the area? These impacts can be positive or negative.

What are the potential **social impacts** in your community that you, or others you know, may experience as a result of the incoming workers to the area? These impacts can be positive or negative.

Imagine BC Hydro is wrapping up their major projects under the Bridge River Capital projects plan. What does **success** look and feel like to you?