

# Architectural Drawing

## File Format

AutoCAD (.dwg) in metric, with all drawings bound - no xrefs

Adobe PDF (.pdf)

## What is an Architectural Drawing?

An Architectural Drawing is a scaled drawing that show the detailed information about the layout, elevations, and dimensions of one or more buildings on a site.

## Why do we need it?

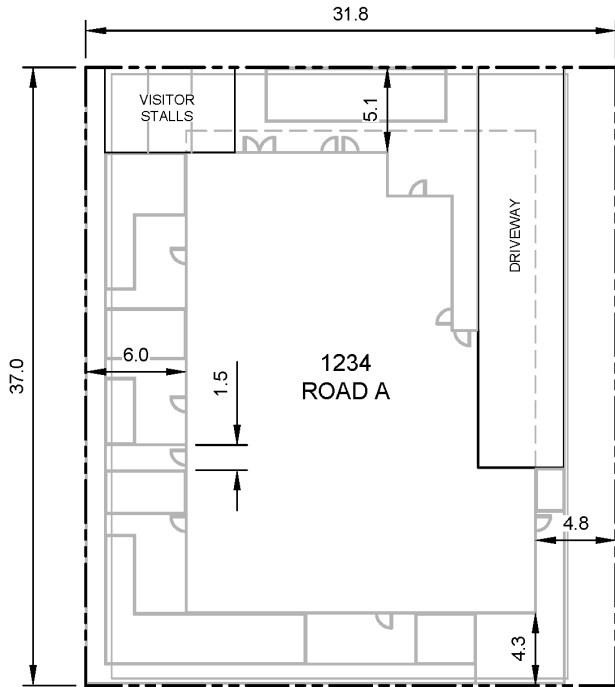
Our servicing and metering infrastructure have requirements for the location and layout within a building. By providing these drawings early, we can work together to plan the electrical servicing and avoid lengthy delays and additional costs during construction.

## What does it need to show?

What we need to see	How much detail is required?	Why do we need to see it?
<b>Site Plan</b>	<ul style="list-style-type: none"><li>An overall view showing all buildings located within the site boundaries and property lines</li></ul>	<ul style="list-style-type: none"><li>To design our power system with the required horizontal clearances to structures</li></ul>
<b>Building Floor Plan</b>	<ul style="list-style-type: none"><li>A top-down view of each above and below ground level, including underground parking</li><li>Location of electrical room(s) and metering locations</li><li>Location of all footings of the building</li></ul>	<ul style="list-style-type: none"><li>To review that our metering and servicing equipment locations are accessible by our equipment and crews</li></ul>
<b>Building Elevations and Cross-Sections</b>	<ul style="list-style-type: none"><li>All sides of the buildings and structures showing all floors, roof profile, windows, and any walkable surfaces (including decks, patios, rooftops, etc.)</li></ul>	<ul style="list-style-type: none"><li>To design our power system with the required vertical and horizontal clearances to structures</li></ul>
<b>Building Materials</b>	<ul style="list-style-type: none"><li>Show any conductive building materials such as rebar, metal clad siding, and metal fencing or gates</li></ul>	<ul style="list-style-type: none"><li>Conductive material may have additional grounding requirements and connections to our power system</li></ul>

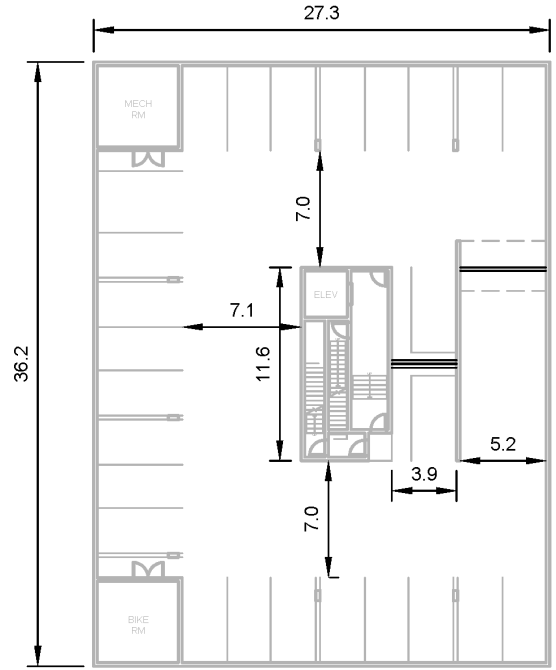
For more detailed information, please refer to our [Distribution Technical Standards and Guides](#) on bchydro.com

# Architectural Drawing (Plan View) Example



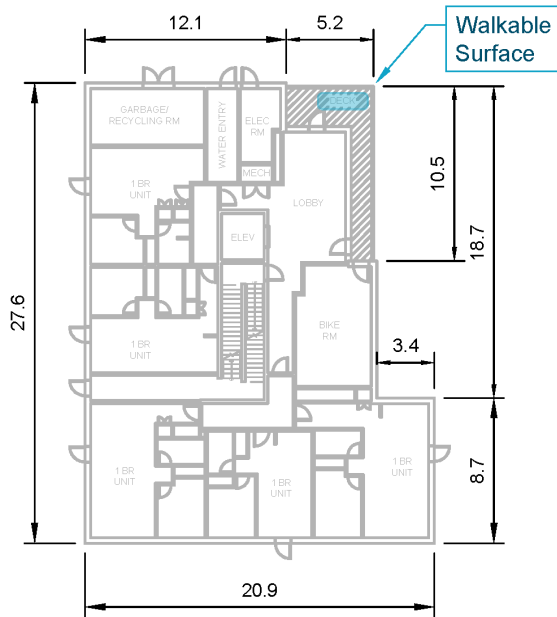
**SITE PLAN**

Site Plan

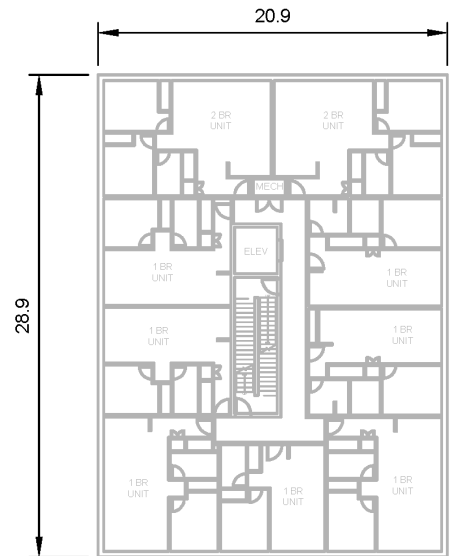


**PARKADE LEVEL**

Parkade Information



**LEVEL 1**



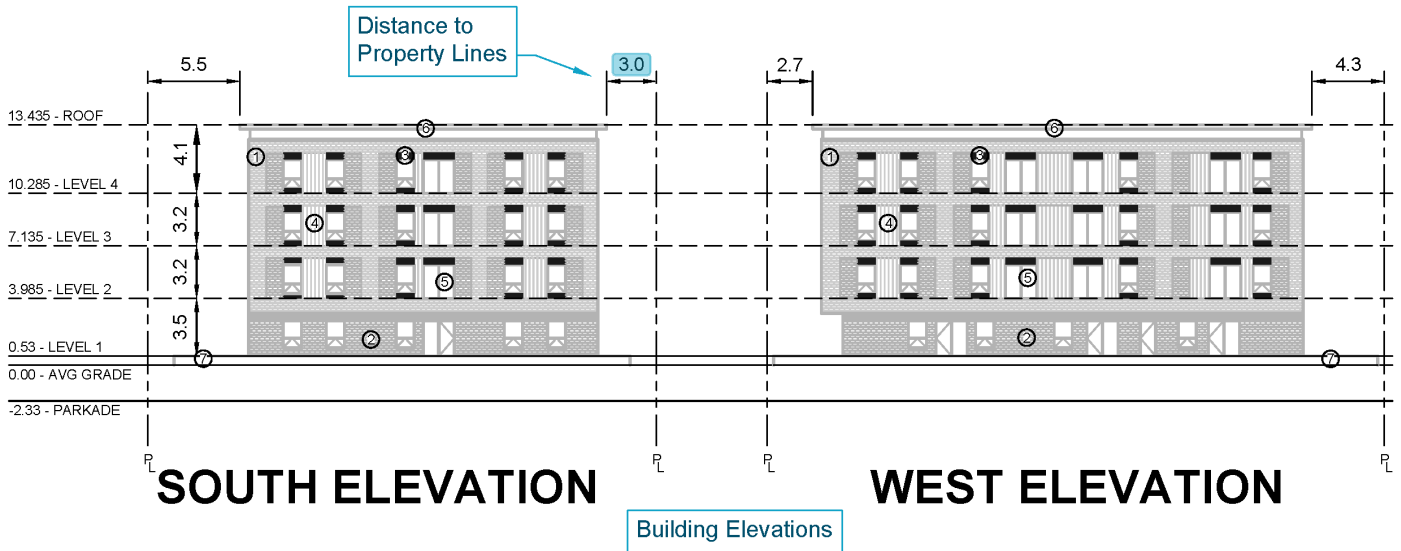
**LEVELS 2-4**

Building Floor Plans

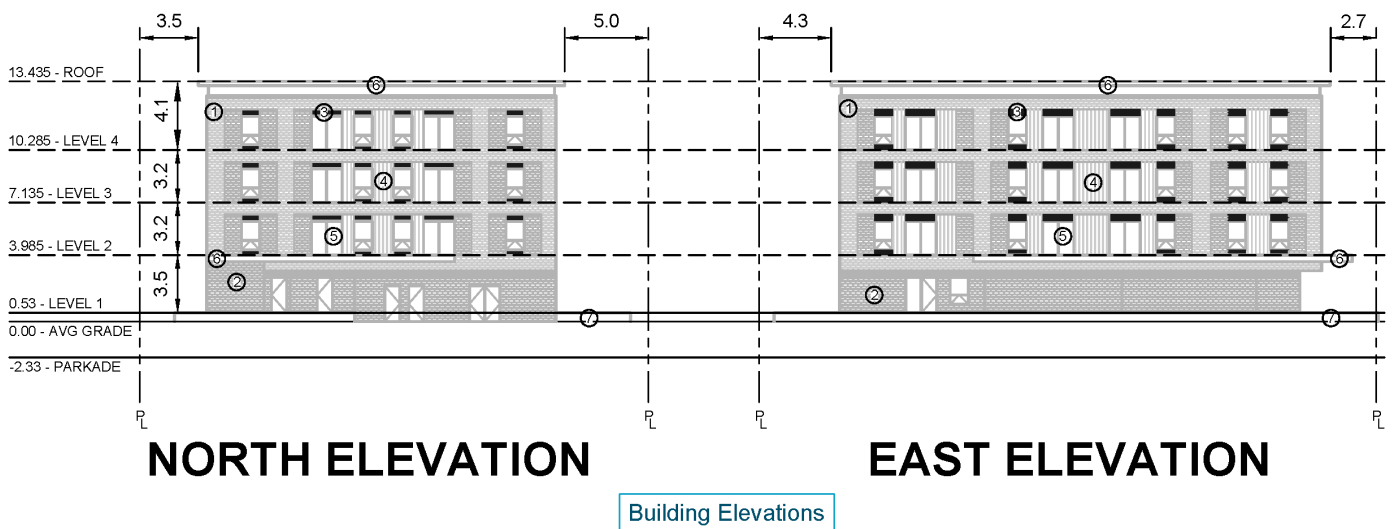
**Example of Required Information**

The material and information shown in this document are intended for informational purposes only, and we'll be updating it from time to time. It has been created to emphasize common requirements, errors and omissions that can cause delays in the design process and may not reflect current industry and professional standards or requirements. It is not a substitute for legal, engineering or professional advice.

# Artichecktural Drawing (Side Profile) Example



- Building Material
- MATERIALS LIST**
- ① TUMBLED BRICK (LIGHT)
  - ② SMOOTH BRICK (DARK)
  - ③ METAL PANEL (DARK GREY)
  - ④ PREFINISHED VERTICAL METAL SIDING (GREY)
  - ⑤ VISION GLASS TYP. (DARK GREY FRAMES)
  - ⑥ PREFINISHED METAL CLAD FASCIA & SIDING (GREY)
  - ⑦ ARCHITECTURAL CONCRETE



## Example of Required Information

The material and information shown in this document are intended for informational purposes only, and we'll be updating it from time to time. It has been created to emphasize common requirements, errors and omissions that can cause delays in the design process and may not reflect current industry and professional standards or requirements. It is not a substitute for legal, engineering or professional advice.