

**Wahleach Project Water Use Plan**

**Lower Jones Creek Channel Stability Assessment  
Year 9 Reporting**

**Reference: WAHMON-2**

**Study Period: May 31, 2013–May 31, 2014**

**Final Report NHC 300102**

**Northwest Hydraulic Consultants Ltd.  
30 Gostick Place  
North Vancouver, BC  
V7M 3G3**

**December 15, 2015**

**Wahleach Water Use Plan  
Lower Jones Creek  
Channel Stability Assessment  
Year 9 Reporting**



**BC Hydro  
6911 Southpoint Drive  
Burnaby, BC**

**15 December 2015  
NHC 300102**

## **NOTIFICATION**

This document has been prepared by Northwest Hydraulic Consultants Ltd. in accordance with generally accepted engineering and geoscience practices and is intended for the exclusive use and benefit of the client for whom it was prepared and for the particular purpose for which it was prepared. No other warranty, expressed or implied, is made.

Northwest Hydraulic Consultants Ltd. and its officers, directors, employees, and agents assume no responsibility for the reliance upon this document or any of its contents by any party other than the client for whom the document was prepared. The contents of this document are not to be relied upon or used, in whole or in part, by or for the benefit of others without specific written authorization from Northwest Hydraulic Consultants Ltd. and our client.

## **CITATION**

NHC. December 15, 2015. Lower Jones Creek Channel Stability Assessment, WAHMON-2 Year 9. Prepared for BC Hydro. 2015.

## **CERTIFICATION**

Report prepared by:

Andre Zimmermann, PhD, PGeo

Report reviewed by:

Barry Chilibeck, MASc, PEng

## EXECUTIVE SUMMARY

The assessment of channel stability on lower Jones Creek was established by BC Hydro as part of the Wahleach Water Use Plan monitoring program to investigate the extent to which the physical stability of the channel bed and substrate grain size distribution limit fish productivity. Channel stability and substrate quality are physically evaluated at seven (7) previously established cross sections (XS) through repeat topographic surveys and photogrammetric sampling of the substrate.

To quantify salmonid productivity, pink and chum salmon escapement has been monitored in Lower Jones Creek for a number of years (Greenbank and Macnair, 2008, 2012, 2014). In the subsequent spring, fry escapement has been quantified and the egg-to-fry survival for the spawning and incubation period determined. These data, along with substrate and channel morphology information collected as part of this study can be used to examine the following two management questions:

- 1) Is channel stability in Lower Jones Creek limiting fish productivity; and
- 2) Is substrate quality in Lower Jones Creek limiting fish productivity?

In order to address the first question, the following hypotheses are to be tested:

- H<sub>1</sub> In consideration of improvements to spawning habitat through increased spawning and incubation flows, fish productivity is not correlated to habitat instability in the anadromous reach of lower Jones Creek.
- H<sub>1a</sub> Fish productivity is not correlated to channel instability as measured by cross sectional areas of scour and fill in the anadromous reach.
- H<sub>1b</sub> Fish productivity is not correlated to channel instability as measured by lateral channel migration involving abandonment of spawning habitat in the anadromous reach.

In order to address the second question, the following hypothesis will also be addressed:

- H<sub>2</sub> In consideration of improvements to spawning habitat through increased spawning and incubation flows, fish productivity is not correlated to substrate quality as measured by substrate particle size in the anadromous reach of lower Jones Creek.

To address these hypotheses, the assessment and field program extends from mid-October to mid-March during odd (pink spawning) years to coincide with peak spawning and end of incubation dates for pink and chum salmon. This report presents summary results of the Year 9 field program and provides a comparison with data collection efforts in previous years. During Year 9 of the program the channel was generally more stable than previous years and scour and fill were relatively reduced. Section 4 continued to experience a relatively large amount of change; however, anadromous fish use is limited at this location.

The data provided by BC Hydro shows that minimum flow targets were not met on 14 days during the spawning cycle, and daily flow data is missing for 13 additional days during this period. Flows were above target until October 16<sup>th</sup>, 2013, at which time they dropped due to a cold clear weather period. Based on a neighbouring gauge, it is likely that flows were below target during the data gap that extends from October 28<sup>th</sup> till November 9<sup>th</sup>, 2013; however, flow may have been augmented by the siphon and/or diversion during this time. Flows were still above pre-WUP flows, and salmon spawning during the period were able to access a large area of spawning substrate (Greenbank and Macnair, 2014).

Repeat channel cross section surveys were used to assess the vertical and lateral stability of the channel. On average, sections 4, 6 and 8 experience more than 15 cm of scour or fill across more than 40% of the wetted channel each year. This is a relatively large amount of change and speaks to the mobility of these sections and the stream channel in general. Sections 9 and 10 are relatively more stable, but still experience some significant scour and fill. Wetted width data from the surveys demonstrates that the wetted width varies more between the sections, than between surveys which further highlights the dynamics of the sections. During Year 9 of the monitoring program the channel morphology was more stable than most of the preceding years.

A main physical characteristic related to substrate quality and fish productivity is the fraction of the bed composed of medium and fine gravel, and sand. As a first order approximation, the surface grain size can be used to provide some information about the subsurface distribution. As such the surface grain size distribution has been monitored at each cross section. Results from the Year 9 study show that the surface grain size distribution was similar to the previous 4 years.

To assess if fish productivity was related to channel stability, a correlation analysis was completed with egg-to-fry survival data from Greenbank and Macnair (2014) and channel morphology metrics (scour, fill and change within the wetted cross section). No significant correlation was observed related to channel morphological metrics. A similar analysis was completed for both the mean percent of the surface substrate composed of medium gravel and sand, and no correlation was found. Based on the data collected during the study it is not possible to reject any of the null hypothesis at the 0.05 % level.

On initial analysis, these results suggest that physical stability and grain size does not affect egg-to-fry survival; however, the repeat surveys show that the channel morphology and grain size is highly variable during all the study years. There are several potential reasons for the lack of correlation:

1. The observed range in egg-to-fry survival is not sufficient to provide enough statistical power.
2. The current physical measurements are not sufficiently precise or of required spatial and temporal coverage to measure channel instability.
3. The current range of channel instability is above a threshold limit such that there is no underlying correlation to egg-to-fry survivals.
4. There is a combination of both physical and biological factors that pose a more fundamental limit on egg-to-fry survivals that is not captured with the current analyses or monitor.

The most important observation from grain size and morphology studies is that lower Jones Creek is an especially dynamic channel that is modified throughout the spawning and incubation period during most years. These conditions are not ideal for fish production, yet Jones Creek continues to produce a large number of fry. Successful fry production relies on a large number of spawning adults, spawning over a large spatial area, so there is a high probability of some areas not being disturbed each year.

Additional studies examining the spatial variability of intergravel flow, fine sediment loading throughout the spawning and incubation period, as well as the quality of the substrate immediately after spawning would improve our understanding of the factors effecting egg-to-fry survival. These should be incorporated with the ongoing egg survival studies using egg baskets at the sites.

## TABLE OF CONTENTS

List of Tables.....	v
List of Figures.....	vi
List of Appendices.....	vi
<b>1 Introduction .....</b>	<b>1</b>
1.1 Background.....	3
1.2 Objectives and Approach .....	3
<b>2 Data Collection .....</b>	<b>6</b>
2.1 Habitat Stability Monitoring.....	6
2.2 Substrate Quality Monitoring.....	7
<b>3 Results .....</b>	<b>9</b>
3.1 Hydrologic Analysis.....	9
3.2 Habitat Stability Monitoring.....	11
3.2.1 Section 4 .....	19
3.2.2 Section 6 .....	19
3.2.3 Section 7 .....	20
3.2.4 Section 8 .....	20
3.2.5 Section 8.5 .....	20
3.2.6 Section 9 .....	20
3.2.7 Section 10.....	21
3.3 Substrate Quality Monitoring.....	21
3.3.1 Section 4 .....	27
3.3.2 Section 6 .....	27
3.3.3 Section 7 .....	28
3.3.4 Section 8 .....	28
3.3.5 Section 8.5 .....	28
3.3.6 Section 9 .....	28
3.3.7 Section 10.....	28
<b>4 Analysis: Relation Between Peak Flows, Habitat, Substrate and Egg-to-fry Survival .....</b>	<b>29</b>
<b>5 Summary.....</b>	<b>35</b>
<b>6 References .....</b>	<b>38</b>

## LIST OF TABLES

Table 1.	Topographic survey schedule for Lower Jones Creek, 2011-2012. ....	6
Table 2.	Date of photos and daily mean flow on date photos were collected. ....	8
Table 3.	Timing of surveys and associated peak discharge values between surveys. ....	11
Table 4.	Proportion of wetted channel width that had fill, scour and total change exceeding 15 cm.. ....	16
Table 5.	Average percent of wetted channel that experienced more than 15 cm of fill, scour or change based on 15 surveys completed between 2005 and 2014. ....	17
Table 6.	Wetted channel width during survey. ....	18
Table 7.	Percent of wetted channel that was not wetted during previous survey.....	19
Table 8.	Number of sediment clasts sampled at each site.....	22
Table 9.	Average $D_{84}$ , $D_{50}$ , $D_{16}$ observed at each study site over the period of the study.....	23
Table 11.	Proportion of surface grain size distribution finer than 2 mm.....	26
Table 12.	Proportion of surface grain size distribution finer than 8 mm.....	27
Table 13.	Egg-to-fry survival and weighted grain size and channel change metrics, as well as peak flow during spawning and incubation period. ....	33
Table 14.	Division of fish spawning density among the 5 long-term geomorphology sections. ....	34

## LIST OF FIGURES

Figure 1.	Lower Jones Creek monitoring sites. ....	2
Figure 2.	Discharge record from 2012-2014. Data from BC Hydro.....	9
Figure 3.	Discharge record from 2005 to 2015. Data from BC Hydro. ....	10
Figure 4.	Plots of cross section 4,6 and 7 from 2005 through till 2014. Sections are viewed looking downstream.....	12
Figure 5.	Plots of cross section 8, 8.5, 9 and 10 from 2005 through till 2014. Sections are viewed looking downstream. ....	13
Figure 6	Percentage of channel width that experienced more than 15 cm of fill, scour and total change during each survey. The peak flow that occurred between each survey is also indicated. ....	14
Figure 7.	Wetted width observed during each survey. ....	18
Figure 8.	D <sub>84</sub> measured at each site.....	24
Figure 9.	D <sub>50</sub> measured at each site.....	25
Figure 10.	D <sub>16</sub> measured at each site.....	25
Figure 11.	Relationship between egg to fry survival and proportion of channel experiencing more than 15 cm of scour, fill or either change within the wetted channel width.....	31
Figure 12.	Relationship between maximum instantaneous discharge and grain size metrics and the egg to fry survival for Pink (P) and Chum (C).....	32
Figure 13.	Relationship between egg to fry survival and the percentage of the wetted channel that was wetted during the survey that was not wetted during the previous survey for Pink (P) and Chum (C) salmon. ....	32
Figure 14.	Surface grain size distribution data plotted on Tappel and Bjornn figure showing egg to fry survival as a function of percent substrate smaller than 9.5 mm and 0.85 mm.....	33
Figure 15.	Jones Creek on October 30 <sup>th</sup> , 2015. Discharge was 3.3 m <sup>3</sup> /s.....	34

## LIST OF APPENDICES

- Appendix A Site photographs taken at photo documentation points
- Appendix B Example site and sample photographs including grain size distribution



## 1 INTRODUCTION

Jones Creek (Wahleach Creek) flows northward into the Fraser River about 16 km west of Hope, BC (**Figure 1**). The channel drains an area of 115 km<sup>2</sup> in the rugged terrain of the Cascade Mountains. The channel is confined until it emerges from a steep valley where gradient declines from 4% to 1.2% (Newbury Hydraulics, 2004), and sediments transported from upstream are deposited on a broad alluvial fan within the Fraser River floodplain. The creek flows across the fan for approximately 900 m before joining the Fraser River. This reach of the creek is commonly referred to as Lower Jones Creek and contains anadromous Pacific salmon and trout.

BC Hydro owns and operates the 64 MW Wahleach Hydroelectric Project (WAH) with a fixed spillway dam on Wahleach Lake about 8 km upstream from the mouth of Jones Creek and a diversion tunnel to the generating station adjacent to Herrling Island on the Fraser River. Approximately 88 km<sup>2</sup> (78%) of the total watershed area drains into Wahleach Lake.

Operation of the hydroelectric project began in 1952, significantly altering the flow regime downstream of the dam and in lower Jones Creek. Peak flows have been reduced by as much as 65% and average annual flow has been reduced by over 80% (MMAL, 1997). Currently, instream flows are derived from tributaries below the dam, though BC Hydro can augment these to meet the Water Use Plan minimum flow target via a siphon on the diversion dam. However, the siphon loses prime and flows cease at lower reservoir elevations.

Compensation measures to reduce fisheries impacts associated with the hydroelectric project began soon after completion of the dam. An artificial spawning and rearing channel was constructed in 1954 adjacent to Lower Jones Creek (Hartman and Miles, 1997) but the channel was plagued by sedimentation problems and has since been abandoned.

More recently, BC Hydro has attempted to restore the physical processes and habitat function by replacing concrete and sheet pile weirs with constructed rock riffles (in 2004) and through placement of an engineered log jam at a side channel entrance (in 2005) to prevent its enlargement (Streamworks Unlimited, 2006). In 2006, several new enhancement projects were completed near the downstream end of Jones Creek, the most significant of which was construction of a new right bank side channel (Streamworks Unlimited, 2006, see Figure 1). Additional recent enhancement projects include flow augmentation of a backwater rearing habitat and revegetation of adjacent banks near Lorenzetta Creek confluence.

BC Hydro's Wahleach Water Use Plan (2005) currently addresses seasonal instream flow targets for pink salmon in Lower Jones Creek via a fish water release siphon on the Wahleach Dam capable of diverting up to 0.85 m<sup>3</sup>/s and a fish water release gate on the Boulder Creek Diversion Dam capable of passing up to 1.4 m<sup>3</sup>/s of Boulder Creek flow to continue into Jones Creek (BC Hydro, 2004). However, the effectiveness of these flows for maintaining pink salmon productivity are uncertain given the potential effects of channel instability and sedimentation in the creek channel.

The Lower Jones Creek Channel Stability Assessment was initiated in 2005 under the Wahleach WUP Monitoring Program (BC Hydro, 2005) to evaluate the effects of channel instability and sedimentation on pink salmon productivity during the spawning and incubation phases of their life cycle. This report presents the results of data collection efforts during Year 9 of the monitoring program (2013/2014) and provides a comparison with data collected during Years 1 (2005/2006), 3 (2007/2008), 5 (2009/10), and 7 (2011/2012).



**WAHLEACH WATER USE PLAN MONITORING**

**Lower Jones Creek  
Monitoring Sites**

Scale - 1:2,500

50 25 0 50 100 Metres

coord. syst.: UTM Zone 10	horz. datum: NAD 83	horz. units: metres
northwest hydraulic consultants	project no. 300102	August 2014

**Reference Map**

**Legend**

Photo Documentation Point (PDP)

Cross Section Alignment

**NOTES:**

- 1) CROSS SECTION LOCATIONS ESTABLISHED OCTOBER, 2005 AND REVISED IN 2012/13.
- 2) REFER TO FIGURES FOR PLOTTED CROSS SECTIONS.
- 3) NINE (9) PHOTO DOCUMENTATION POINTS (PDP) ARE SHOWN ON THE MAP.
- 4) LOCATION OF SPAWNING REARING CHANNEL FEATURES AFTER 1973, (MMAL, 1997).
- 5) BACKGROUND ORTHOPHOTO CAPTURED APRIL 2010, PROVIDED BY BC HYDRO

Figure 1: Jones Creek monitoring sites

## 1.1 BACKGROUND

The Lower Jones Creek study area extends within the stream channel approximately 900 m from the Laidlaw Road Bridge near the apex of the fan to the Highway 1 Bridge near the mouth of the creek (**Figure 1**). Lorenzetta Creek enters Lower Jones Creek approximately 80 m upstream from the mouth. BC Hydro operates a streamflow gauging station (BCH\_LJC) immediately downstream of the Laidlaw Road Bridge. A buried gas pipeline crosses beneath the creek channel approximately 200 m downstream of the Laidlaw Road Bridge.

The creek channel is incised on the upper part of the alluvial fan, from the apex near Laidlaw Road Bridge to a point shortly downstream of the pipeline crossing. In this section, the channel is approximately 10 m in bottom width and is confined within banks 3 to 4 m in height. Exposed tree roots in the banks provide evidence of significant channel downcutting through fan deposits in recent years and there is some recession and ravelling along the steep left bank. There were very large floods in both 1989 and in 1990 (the flood of record; Newbury Hydraulics, 2004) that introduced large volumes of sediment from upstream through which the channel has since incised.

Large rainstorm-generated floods in 1993 and 1995 also introduced large volumes of sediment to the fan (Hartman and Miles, 1997) depositing material up to 3 m thick near the Laidlaw Bridge (Interfor, 1996). The channel bed is comprised mainly of coarse, infrequently mobile material, with pockets of finer material in protected areas between the boulders. Active sediment sources related to logging activities were a primary source of sediment in the past (cf. Hartman and Miles, 1997) while large natural landslides provide the primary source of sediment to the fan at present.

Below the pipeline crossing, the channel widens dramatically to 40 to 50 m width with lower banks (1 to 2 m height, occasionally less). The meandering channel is characterized by frequent point, lateral and mid-channel gravel bars which are inundated during high flow events. The wetted low flow channel occupies less than one-third of the total active flood channel. This part of the fan channel is subject to active sediment deposition and lateral channel movement. Near the downstream end of the fan a recently constructed (2004) rock weir constricts the channel (**Figure 1** – Photo point #2). The weir replaces older concrete and sheet pile weirs that were lowered because they were creating a sediment wedge that raised the bed (Newbury Hydraulics, 2004).

Near the mouth of the creek, Fraser River exerts a seasonal backwater influence on Jones Creek water levels. The Fraser River hydrograph is dominated by snowmelt with maximum water levels occurring between May and July. During this period, the lowermost 200 m of Jones Creek is affected by Fraser River backwater and there can be significant accumulations of sediment on a right bank bar. Jones Creek also experiences a modest spring freshet resulting from snowmelt in the watershed below Wahleach Lake. However, the largest flows typically occur during rainfall and rain-on-snow events in the autumn and winter, typical of small basins in coastal British Columbia.

## 1.2 OBJECTIVES AND APPROACH

BC Hydro completed a Water Use Plan (WUP) for the Wahleach Project which was submitted to the Comptroller of Water Rights in 2004 and implemented in January, 2005. The Consultative Committee (CC) formed under the WUP, recommended several operational changes as part of the WUP, including the provision of minimum flow targets. A minimum discharge of 1.1 m<sup>3</sup>/s is the current target during the spawning period (15 September through 30 November), and a minimum discharge of 0.6 m<sup>3</sup>/s is required during the remainder of the year. These instream flow targets can be met pending available Wahleach Dam siphon available at reservoir elevations >636 m and Boulder Diversion augmentation available for flows > 0.14 m<sup>3</sup>/s.

The CC could not address whether instream flows or channel instability was limiting spawning success and fish productivity in Lower Jones Creek. Therefore, a comprehensive monitoring program was approved to assess the effectiveness of the minimum flow regime on fish productivity, and to assess channel conditions in Lower Jones Creek as a possible limiting condition for fish productivity.

The channel stability assessment commenced in 2005-2006 and is scheduled to be conducted in alternate years through 2013 corresponding to pink salmon runs. The overall purpose of the lower Jones Creek channel stability assessment is to address two management questions:

- 1) Is channel stability in Lower Jones Creek limiting fish productivity; and
- 2) Is substrate quality in Lower Jones Creek limiting fish productivity?

In order to address the first question, the following hypotheses are to be tested:

- H<sub>1</sub> In consideration of improvements to spawning habitat through increased spawning and incubation flows, fish productivity is not correlated to habitat instability in the anadromous reach of lower Jones Creek.
- H<sub>1a</sub> Fish productivity is not correlated to channel instability as measured by cross sectional areas of scour and fill in the anadromous reach.
- H<sub>1b</sub> Fish productivity is not correlated to channel instability as measured by lateral channel migration involving abandonment of spawning habitat in the anadromous reach.

In order to address the second question, the following hypothesis will also be addressed:

- H<sub>2</sub> In consideration of improvements to spawning habitat through increased spawning and incubation flows, fish productivity is not correlated to substrate quality as measured by substrate particle size in the anadromous reach of lower Jones Creek.

The approach to addressing these hypotheses was outlined in the original Terms of Reference, but has been subsequently modified to reflect problems encountered with data collection and methodology. Data and analysis presented in this annual data report for Year 9 of the monitoring program is based on a proposal originally submitted by NHC in August, 2007 and subsequently agreed to by BC Hydro.

These changes include showing topographic changes over time at discrete cross section locations only rather than attempting to integrate volumetric changes throughout the study reach, and a consistent approach for substrate monitoring using photo sampling. NHC (2010) suggested adding a new section between XS 6 and XS 8 to better reflect the spatial extent of spawning habitat, which has been established and monitored within the Year 9 study.

For the ninth year of the monitoring program, topographic surveys, site photography and photographic substrate sampling was completed at six previously established transect locations along Lower Jones Creek (**Figure 1**) and an additional section (XS 8.5) was added between XS 7 and XS 8. Target survey dates were established to coincide with peak spawning (15 October), mid-incubation (1 January), and end of incubation periods (15 March). Repeat topographic surveys and site photos are used to monitor habitat stability, while the repeat photographic substrate samples are used to monitor changes in substrate quality.

This report outlines the methodology and results for the ninth year of the monitoring program. The results of this report are compared to the morphologic data collected during previous years. These data are then used to assess if the data display any temporal trends. To assess the management questions, a correlation analysis between fish productivity data from Greenback and Macnair (2014) and channel stability and grain size metrics was also completed. As part of the Year 9 reporting, NHC also conducted an internal review of the approaches being used to analyze the data, and as a result some of the analysis has changed. These changes are described in the Data Collection report section that follows.

## 2 DATA COLLECTION

### 2.1 HABITAT STABILITY MONITORING

Habitat stability monitoring quantifies the magnitude of channel changes during the post-spawning period. Habitat monitoring surveys have been scheduled to correspond with various points in the spawning and incubation life cycle phases for pink salmon. In practice, the actual dates of channel survey and site photography deviate from the target dates due to poor weather or high flow conditions, and because of scheduling constraints (**Table 1**). This combination of factors led to the delay in completing the Jan 1 target survey. The lag between the survey target date and the actual survey date is not critical provided there have been no large or sustained peak flows, as these can cause significant changes in channel shape.

**Table 1. Topographic survey schedule for Lower Jones Creek, 2011-2012.**

Target Date	Date of Field Work	Pink Salmon Periodicity
Oct 15, 2013	Sep 26, 2013	Peak spawning
Jan 1, 2014	Feb 27, 2014	Incubation midpoint
Mar 15, 2014	Apr 2, 2014	Incubation endpoint

NHC visited Lower Jones Creek on September 16, 2013 to survey the cross sections, conduct the substrate photo surveys and collect photo documentation points (PDPs). Site photographs were taken from each PDP with roughly the same view orientation used in previous years. The site photographs were initially intended to provide supplementary information for interpreting topographic survey results (presented in **Appendix A**). However, orthophotos taken during low water periods in 2008, 2009 and 2010 provide a more robust means of interpreting channel stability because they have identical scaling and orientation, allowing lateral changes to be quantified. Orthophotos are not specifically collected for this monitor and are not available for every study year which limits the temporal coverage of this information. Air photos have not been assessed for the current monitoring year.

Several previously installed benchmarks could not be located. The layout function in the total station was therefore used to establish the location of the existing sections and search for endpoint benchmarks. New spikes were added to trees closest to each benchmark to aid section relocation during future surveys. All sections were surveyed using a Nikon-Trimble NPL 362 Total Station tied to geodetic control established using a Real-Time Kinetic (RTK) GPS Total Station. The RTK GPS cannot be used to survey the entire area due to limited cellular coverage that provides real time gps correction information, because of tree canopy-related signal deterioration and mountains that limit reception.

The basic survey procedure involves recording the location of breaks in slope, the edge of the wetted channel, and significant changes in bed texture between cross section endpoints. The site was not visited again until late February, when the field procedures were repeated. Analysis of the cross section data, and a comparison to the data collected in previous years, is presented in Section 3.

## 2.2 SUBSTRATE QUALITY MONITORING

An abundance of fine sediment in stream substrates is thought to be a key indicator of poor quality fish habitat. The *Terms of Reference* specifies the use of grain-size limits from 0.85 mm to 9.5 mm as recommended by Tappel and Bjornn (1983). This study found the fraction of sediment within this range to be a limiting factor for salmonid embryonic survival. These limits do not correspond to conventional physically based thresholds, but rather are based on an artefact of sieve sizes used in earlier work (Kondolf, 2000) and are often rounded to 1 mm and 8 mm.

More recent work has shown that fine sand and silt can also effect survival (Levasseur *et al.*, 2006), at much lower concentrations, due to the effectiveness of fine sediment at reducing inter-gravel velocities. The above listed studies are based on sub-surface grain size distributions, which are relatively time consuming to collect in the field, require disturbing gravel which may contain incubating eggs, and have a limited spatial extents.

To provide a simpler approach that covers a wider spatial area, photos of the substrate surface were collected and used to determine the grain size of the surface sediment. The assumption is that the surface grain size distribution will correlate with the sub-surface distribution. Generally this is true, but the ratio can vary over a factor of 4 for the mean grain size ( $D_{50}$ ; Hassan *et al.*, 2006), and will vary even more for fine gravel and sand due to winnowing and low flow fine sediment deposition that can occur. For this reason the surface grain size distribution is best taken as an index of grain size, but the absolute values should not be directly compared to metrics that predict egg survival based on grain size.

The photographic substrate samples are scheduled to correspond with various points in the spawning and incubation life cycle phases for pink salmon, and are hence used to assess changes in fine sediment content over this period. The actual dates of photographic substrate sampling are identical to the cross section dates, eliminating potential bias in surface sediment changes introduced by a large lag period between photo and topographic sampling. Photo sampling is limited by elevated turbidity levels, so field visits are not completed immediately following rain events or when water levels are too high.

Photographic substrate samples were collected at the same five transects as the topographic surveys (Table 2). Samples were taken on each transect near points coinciding with  $\frac{1}{4}$ ,  $\frac{1}{2}$  and  $\frac{3}{4}$  of the measured width of the entire wetted channel at the time of survey. Two photographs are taken at each site immediately to the left and the right of the distance marker (6 samples in total). During low light conditions additional photos are taken from different orientations or with different camera settings and the two sharpest images are retained for analysis.

The autumn sampling was completed during clear water at low to intermediate flows ( $Q = 1.2 \text{ m}^3/\text{s}$ ) and the winter photos were taken during lower water ( $Q = 0.8 \text{ m}^3/\text{s}$ ) when the flow was clear. Photos are taken through the water column using a 65 cm tall, 36 cm diameter aluminum tube adapted from a device developed for work in Alaskan Streams (Whitman *et al.*, 2011). The tube is fitted with a clear Plexiglas bottom, and mounted on 5 cm high legs. A darkened, removable lid with camera mount and viewing hole sits on top of the tube. The tube design blocks all light except that which filters in from the bottom.

**Table 2. Date of photos and daily mean flow on date photos were collected.**

Date of photos	Daily Discharge (BC Hydro)
8-Dec-05	Not available
9-Feb-06	Not available
5-May-06	Not available
5-Nov-07	2.82
25-Jan-08	0.74
19-Mar-08	1.13
28-Oct-09	1.03
3-Feb-10	0.79
18-Mar-10	1.31
1-Nov-11	1.57
23-Feb-12	3.04
26-Sep-13	1.16
27-Feb-14	0.81
2-Apr-14	1.03

By using a digital camera with polarizing filter, sharp, high-resolution images can be acquired in a variety of light conditions. A height-adjustable rod attached to the side allows the device to be used in clear water to depths of roughly 1 meter. The device can be used in moderately turbid water provided the flow depth is small as the base can be placed near the bottom, minimizing the thickness of the water column through which the picture is taken. Results of the substrate analysis are provided in Section 3.

The prior monitoring reports have been based on grain size data that was truncated at 64 mm, as this has historically been a common practice in the fisheries biology community and was thought to remove the bias that can occur if larger grains are present, but not adequately sampled. In practice, truncating at larger grain sizes artificially increases the percent fines and can make the habitat appear to have poorer quality than actually occurs (Fripp and Diplas, 1993; Zimmermann *et al.*, 2005).



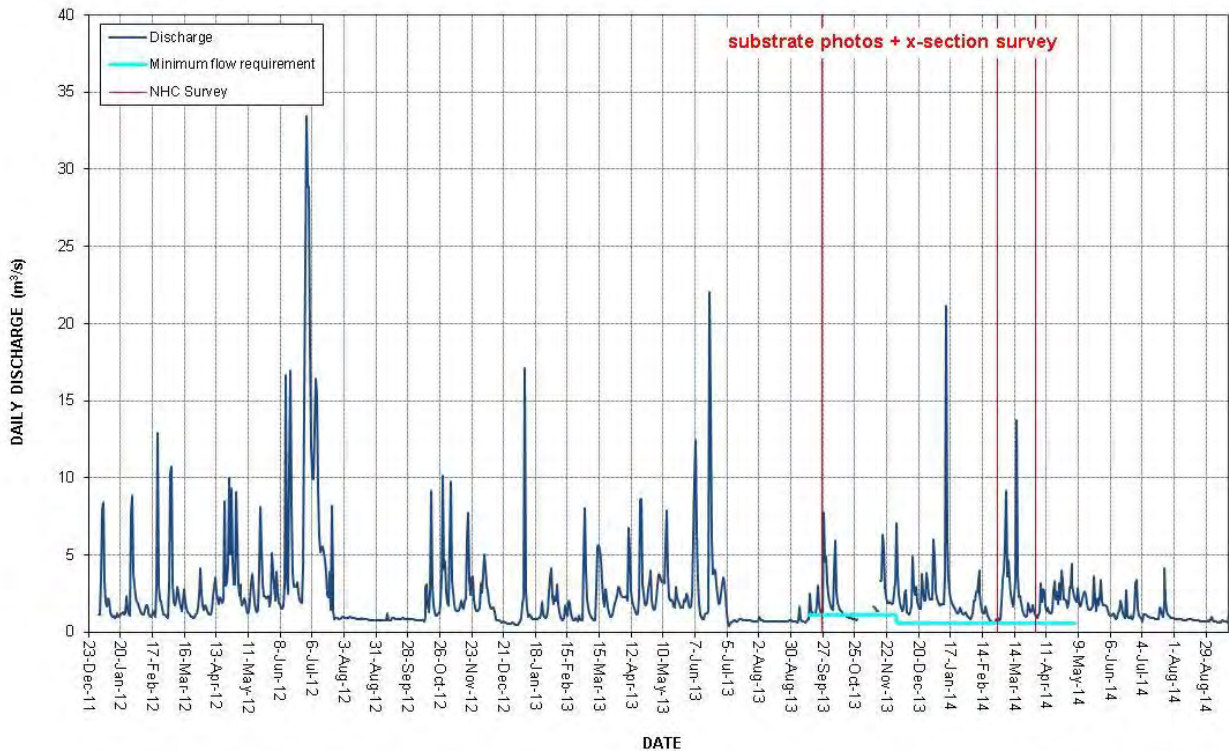
### 3 RESULTS

#### 3.1 HYDROLOGIC ANALYSIS

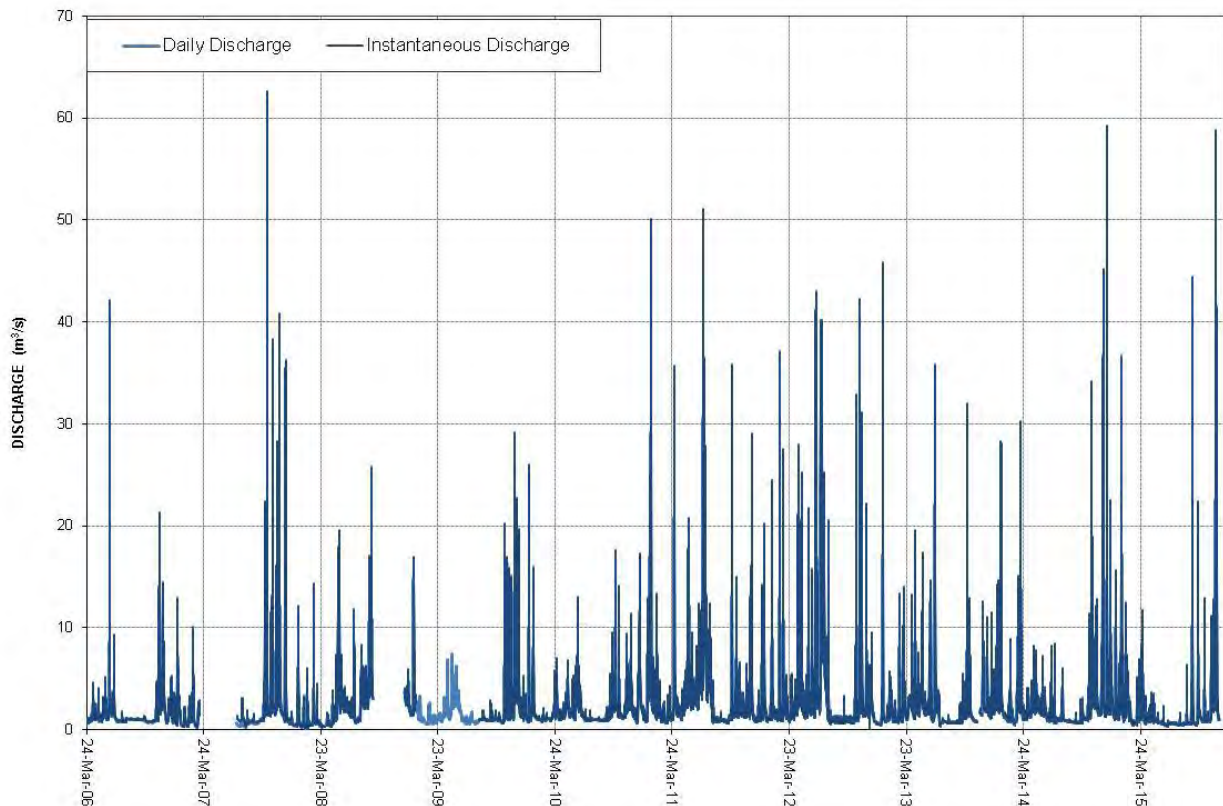
Daily discharge records have been provided by BC Hydro for the duration of the monitoring program through the fall of 2014. The record during the Year 9 monitoring period is mostly continuous, however, there are 5 data gaps prior to February 2009 that range in length from 3 days to 118 days. There are also 4 data gaps in the fall of 2013 ranging in length from 1 to 11 days. **Figure 2** presents the hydrograph from the end of Year 7 through the entire Year 9 monitor with the survey and sample dates and required target flows noted.

Note that a large spike in discharge around 20<sup>th</sup> of January 2012 is an error and we have removed the data from our records. Nearby gauges did not show a rise, and air temperatures went to  $-15^{\circ}\text{C}$ . It is almost certainly the case that the pressure transducer was frozen and recorded faulty data. A complete record of the discharge data that NHC has received to date is shown in **Figure 3**. The gaps early on in the record make it difficult to assess some aspects of the project.

**Figure 2. Discharge record from 2012-2014. Data from BC Hydro.**



**Figure 3. Discharge record from 2005 to 2015. Data from BC Hydro.**



Mean daily discharge for each of the channel surveys and substrate sample collections is presented below:

- September 26, 2013: 1.2 m<sup>3</sup>/s;
- February 27, 2014: 0.81 m<sup>3</sup>/s ;and
- April 4, 2014: 1.2 m<sup>3</sup>/s.

The current Water Use Plan indicates that a minimum flow of 1.1 m<sup>3</sup>/s is targeted during the spawning cycle (Sept 15 – Nov 30). The data provided by BC Hydro shows that minimum flow targets were not met on 14 days during the spawning cycle, and daily flow data is missing for 13 additional days during this period. Flows were above target until October 16<sup>th</sup>, 2013, at which time they dropped due to a cold clear weather period. Based on a neighbouring gauge, it is likely that flows were below target during the data gap that extends from October 28<sup>th</sup> till November 9<sup>th</sup>, 2013.

The occurrence of high flows causes changes in channel morphology and substrate quality. Newbury Hydraulics (2004) estimated bankfull discharge to be roughly 20 m<sup>3</sup>/s. The bankfull discharge is often considered to be the discharge that is capable of reshaping alluvial channel dimensions by eroding banks and transporting bed material. Ideally the bankfull discharge should be compared to the instantaneous peak flow, not the daily mean flow. In streams that are rain dominated, like Jones Creek, the daily peak flow can be considerably smaller as is evident in **Table 3**.

**Table 3. Timing of surveys and associated peak discharge values between surveys.**

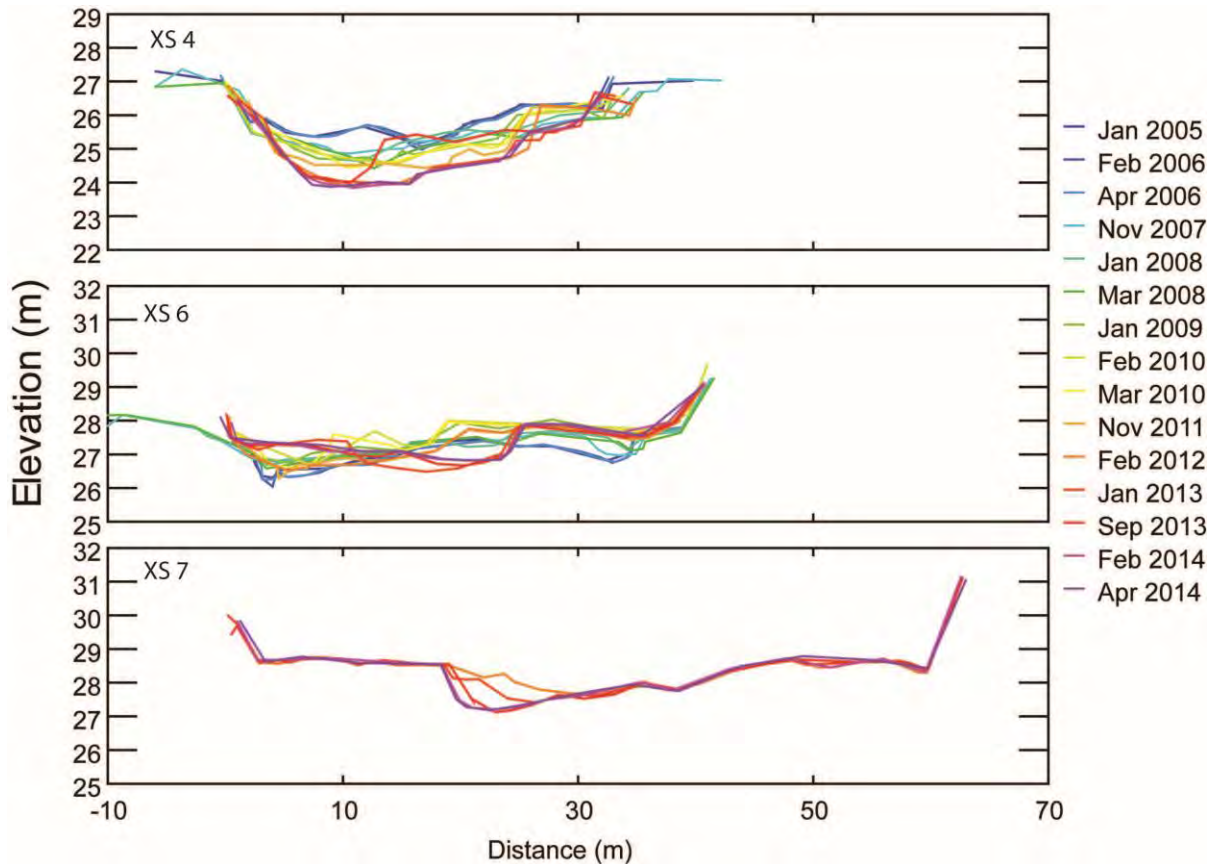
Dates		Max Instantaneous Flow (m <sup>3</sup> /s)	% Coverage	Max daily Flow (m <sup>3</sup> /s)	% Coverage	Likelihood of missing large event
Start	End					
10/25/2005	2/6/2006	19.965	99%	7.9	97%	Low
2/6/2006	4/5/2006	3.077	100%	1.5	100%	None
4/5/2006	11/15/2007	62.66	80%	13.3	80%	Moderate
11/15/2007	1/25/2008	40.8	100%	17.4	100%	None
1/25/2008	3/19/2008	14.3	100%	4.1	100%	None
<b>3/19/2008</b>	<b>10/28/2009</b>	<b>25.75</b>	<b>48%</b>	<b>14.8</b>	<b>81%</b>	<b>High</b>
10/28/2009	2/3/2010	29.16	100%	8.9	100%	None
2/3/2010	3/18/2010	2.2	100%	1.3	100%	None
3/18/2010	11/1/2011	51.06	100%	10.7	100%	None
11/1/2011	2/23/2012	37.2	100%	12.9	100%	None
2/23/2012	1/31/2013	51.1	100%	33.4	100%	None
1/31/2013	9/26/2013	35.8	100%	22	100%	None
9/26/2013	2/27/2014	32	100%	21.2	100%	None
2/27/2014	4/2/2014	30.2	100%	13.7	100%	None

### 3.2 HABITAT STABILITY MONITORING

Temporal trends in the cross section morphology are shown in **Figure 4** and **Figure 5** by overlaying sequential plots. Cross sections 4 and 6 (XS 4 and XS 6) have been relatively active over the monitoring period, and change both laterally and vertically (**Figure 4**). The magnitude of these changes is not surprising given the sediment load and fining of the grain size distribution that occurs because of the Fraser River induced backwatering.

XS 7 has been relatively more stable; however, it has progressively incised and eroded the left side of the channel. With the exception of aggradation that occurred after 2007, the channel has remained relatively stable from XS 8 upstream to the Laidlaw Road Bridge across Jones Creek. This is reflected in the cross sectional profiles displayed in **Figure 5** (XS 8, XS 8.5, XS 9, and XS 10). With the exception of XS 8, all of these monitoring sections have remained quite stable in both planform and profile. XS 8 experienced primarily degradation along the lock-block reinforced left bank during the first 6 years of monitoring, and has remained more stable since.

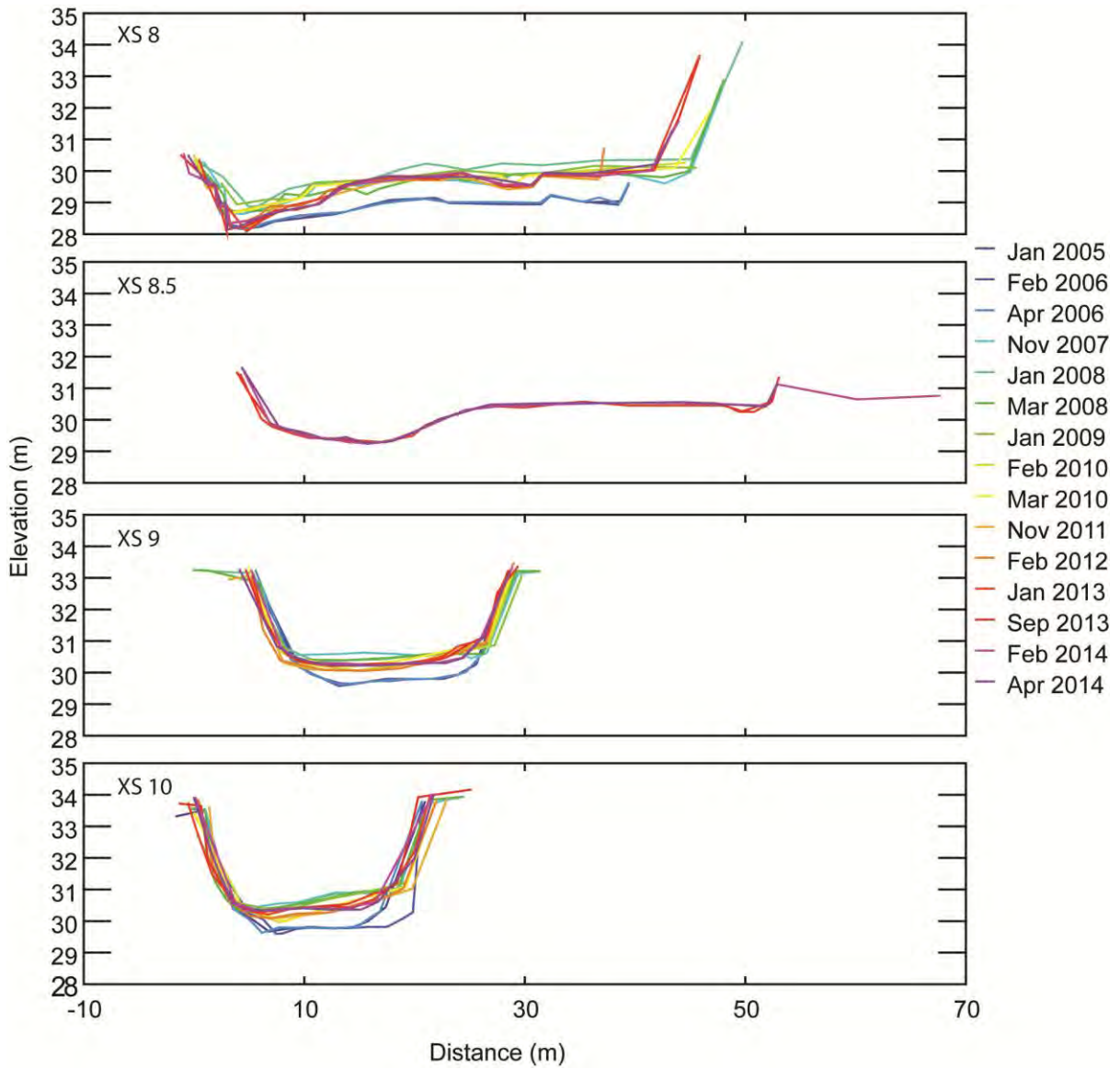
**Figure 4. Plots of cross section 4, 6 and 7 from 2005 to 2014. Sections are viewed looking downstream.**



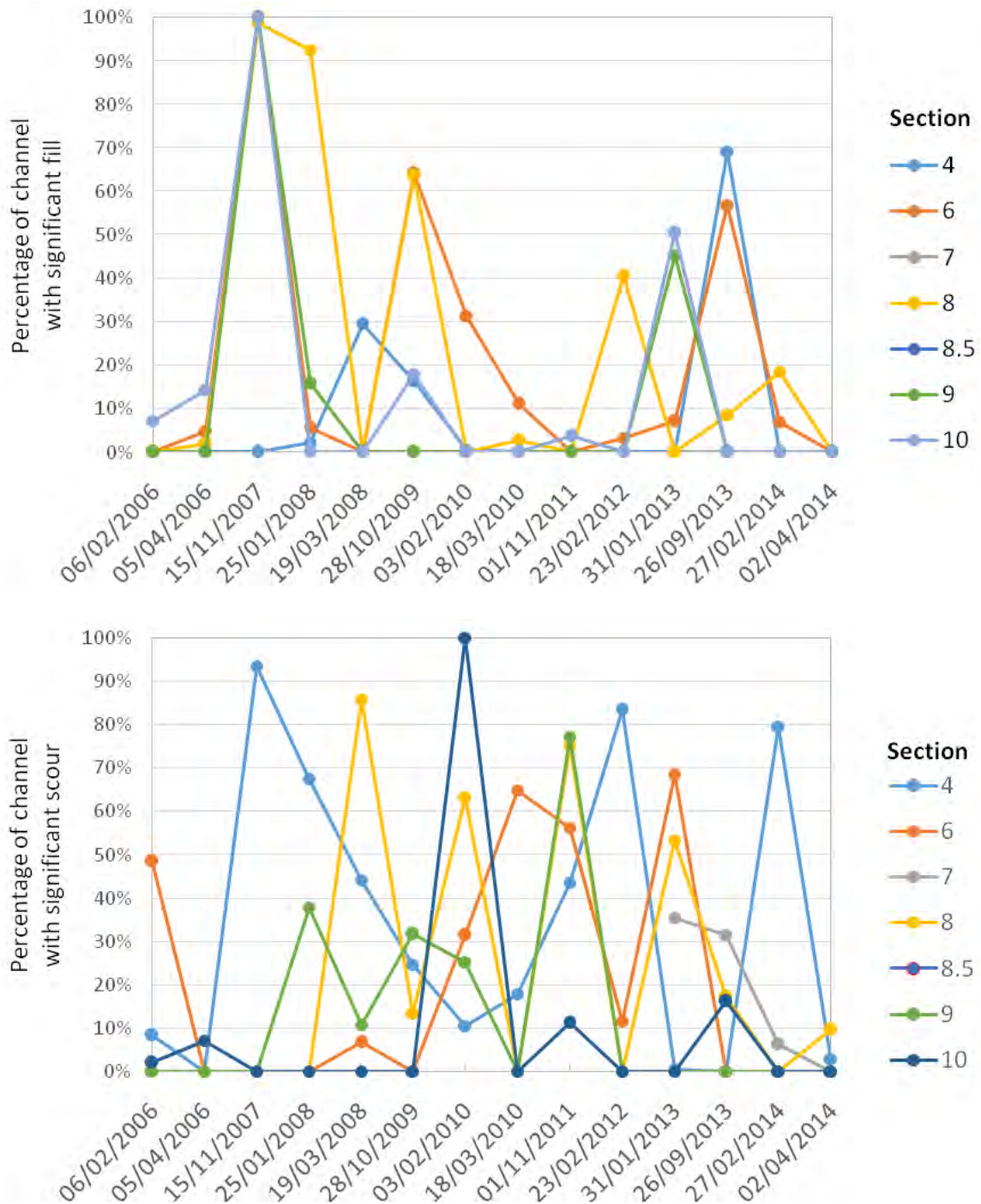
The survey data has been used to calculate the magnitude of change at each cross section within the wetted portion of the channel. This is done by determining the bed elevation at fixed locations spaced 0.1 m across the channel. Each point is then compared to the survey from the preceding year to see if bed has scoured or aggraded. Vertical differences in bed elevation of 10 cm or less are considered within the range of survey error due to the irregularity of the channel bed. Minor differences in elevation also occur due to small deviations from the previous survey line during the time of survey. Chainage and elevation values recorded by the total station are exported to a spreadsheet for plotting.

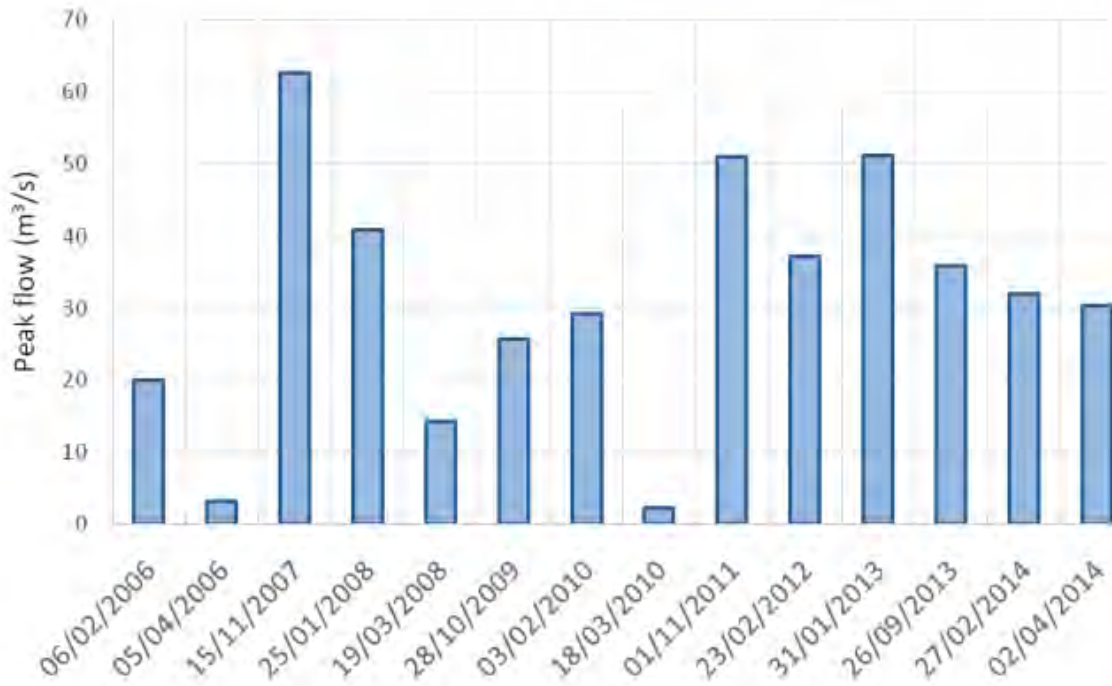
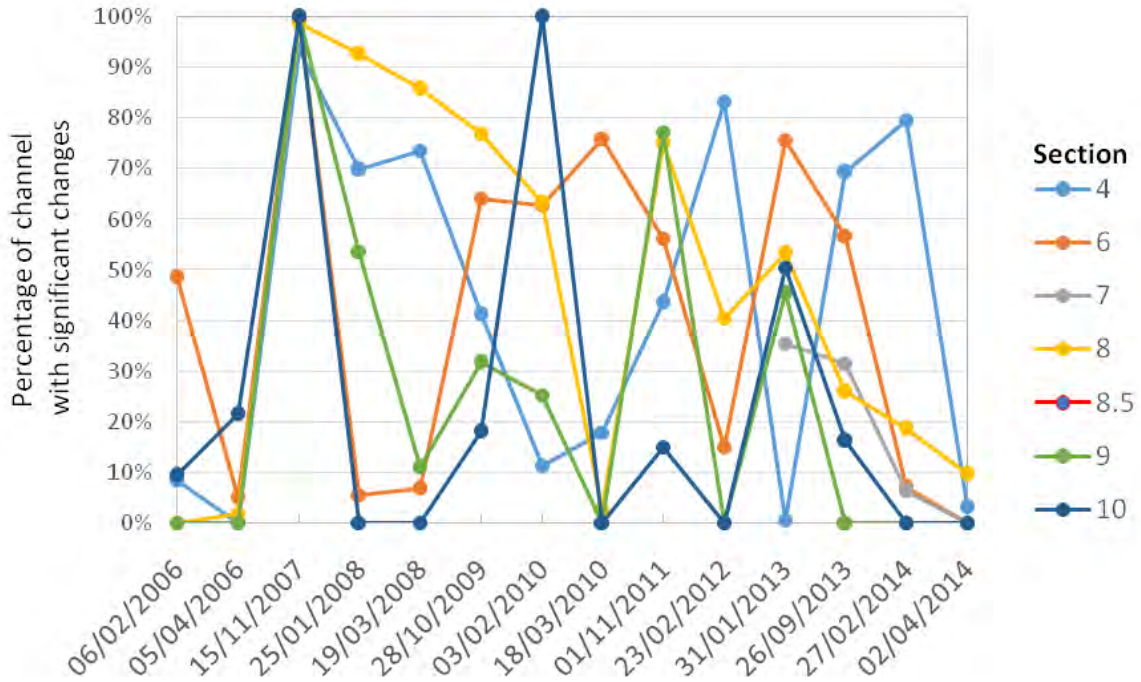
Scour and fill within the wetted portion of the channel are summarized in **Table 4**. A threshold of 15 centimetres was used to define 'significant' scour or fill. This threshold was chosen as it is likely that scour or fill of 15 cm is biologically meaningful (likely to scour or entomb eggs) and it exceeds the uncertainty associated with repeat surveys. Figures illustrating temporal changes in the amount of scour and fill are shown in **Figure 6** along with the peak flow that was observed between the two surveys. In general, larger peak flows resulted in a larger proportion of the channel changing by more than 15 cm.

Figure 5. Plots of cross section 8, 8.5, 9 and 10 from 2005 to 2014. Sections are viewed looking downstream.



**Figure 6** Percentage of channel width that experienced more than 15 cm of fill, scour and total change during each survey. The peak flow that occurred between each survey is also indicated.





**Table 4. Proportion of wetted channel width that had fill, scour and total change exceeding 15 cm. No changes greater than 15 cm occurred between the 4 surveys at section 8.5, thus it has been excluded from the table. Light shading indicates spawning period, dark shading indicates incubation period.**

Proportion of channel with significant fill								
Date		Section						Peak Flow (m <sup>3</sup> /s)
Start	End	4	6	7	8	9	10	
25/10/2005	06/02/2006	0%	0%		0%	0%	7%	20.0
06/02/2006	05/04/2006	0%	5%		2%	0%	14%	3.1
05/04/2006	15/11/2007	0%	100%		99%	100%	100%	62.7
15/11/2007	25/01/2008	2%	6%		93%	16%	0%	40.8
25/01/2008	19/03/2008	29%	0%		0%	0%	0%	14.3
19/03/2008	28/10/2009	16%	64%		64%	0%	18%	25.8
28/10/2009	03/02/2010	1%	31%		0%	0%	0%	29.2
03/02/2010	18/03/2010	0%	11%		3%	0%	0%	2.2
18/03/2010	01/11/2011	0%	0%		0%	0%	4%	51.1
01/11/2011	23/02/2012	0%	3%		41%	0%	0%	37.2
23/02/2012	31/01/2013	0%	7%	0%	0%	45%	50%	51.1
31/01/2013	26/09/2013	69%	57%	0%	9%	0%	0%	35.8
26/09/2013	27/02/2014	0%	7%	0%	19%	0%	0%	32.0
27/02/2014	02/04/2014	0%	0%	0%	0%	0%	0%	30.2

Proportion of channel with significant scour								
Date		Section						Peak Flow (m <sup>3</sup> /s)
Start	End	4	6	7	8	9	10	
25/10/2005	06/02/2006	8%	49%		0%	0%	2%	20.0
06/02/2006	05/04/2006	0%	0%		0%	0%	7%	3.1
05/04/2006	15/11/2007	94%	0%		0%	0%	0%	62.7
15/11/2007	25/01/2008	67%	0%		0%	38%	0%	40.8
25/01/2008	19/03/2008	44%	7%		86%	11%	0%	14.3
19/03/2008	28/10/2009	25%	0%		14%	32%	0%	25.8
28/10/2009	03/02/2010	11%	31%		63%	25%	100%	29.2
03/02/2010	18/03/2010	18%	65%		0%	0%	0%	2.2
18/03/2010	01/11/2011	44%	56%		75%	77%	11%	51.1
01/11/2011	23/02/2012	83%	12%		0%	0%	0%	37.2
23/02/2012	31/01/2013	1%	69%	36%	53%	0%	0%	51.1
31/01/2013	26/09/2013	0%	0%	31%	17%	0%	16%	35.8
26/09/2013	27/02/2014	80%	0%	6%	0%	0%	0%	32.0
27/02/2014	02/04/2014	3%	0%	0%	10%	0%	0%	30.2



Proportion of channel with significant total change								
Date		Section						Peak Flow (m <sup>3</sup> /s)
Start	End	4	6	7	8	9	10	
25/10/2005	06/02/2006	8%	49%		0%	0%	9%	20.0
06/02/2006	05/04/2006	0%	5%		2%	0%	21%	3.1
05/04/2006	15/11/2007	94%	100%		99%	100%	100%	62.7
15/11/2007	25/01/2008	70%	6%		93%	54%	0%	40.8
25/01/2008	19/03/2008	74%	7%		86%	11%	0%	14.3
19/03/2008	28/10/2009	41%	64%		77%	32%	18%	25.8
28/10/2009	03/02/2010	11%	63%		63%	25%	100%	29.2
03/02/2010	18/03/2010	18%	76%		3%	0%	0%	2.2
18/03/2010	01/11/2011	44%	56%		75%	77%	15%	51.1
01/11/2011	23/02/2012	83%	15%		41%	0%	0%	37.2
23/02/2012	31/01/2013	1%	76%	36%	53%	45%	50%	51.1
31/01/2013	26/09/2013	69%	57%	31%	26%	0%	16%	35.8
26/09/2013	27/02/2014	80%	7%	6%	19%	0%	0%	32.0
27/02/2014	02/04/2014	3%	0%	0%	10%	0%	0%	30.2

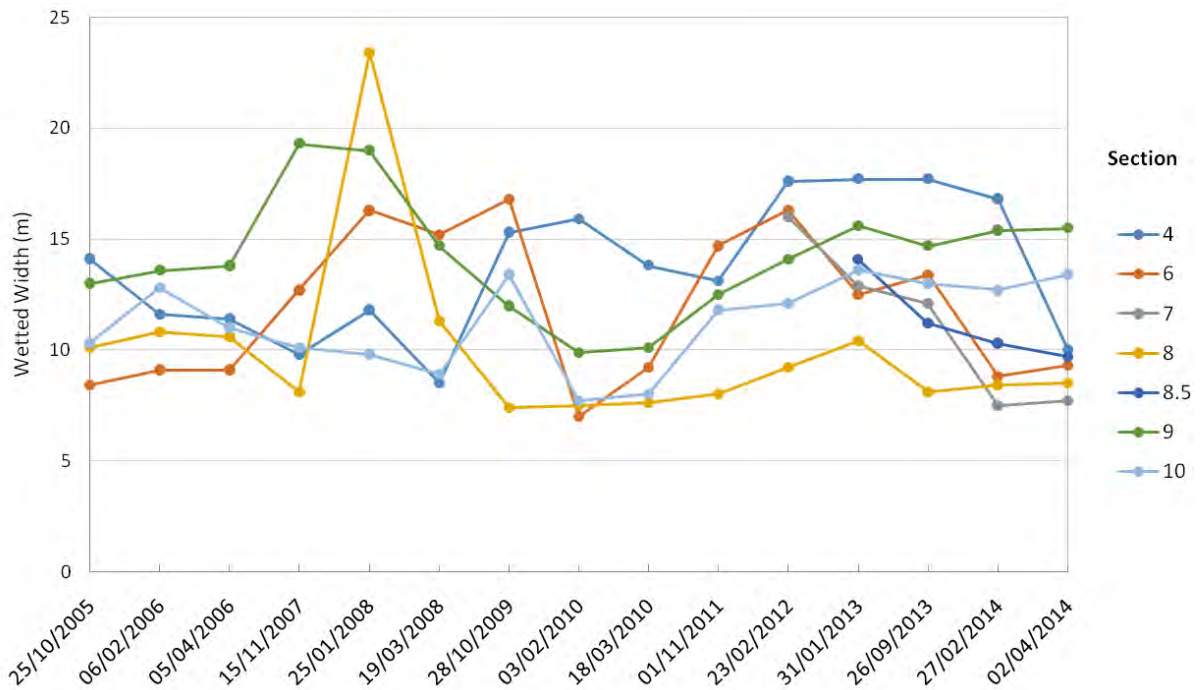
**Table 5. Average percent of wetted channel that experienced more than 15 cm of fill, scour or change based on 15 surveys completed between 2005 and 2014.**

Section	% wetted channel fill	% wetted channel scour	% wetted channel changed
4	8%	34%	42%
6	21%	21%	41%
8	23%	23%	46%
9	12%	13%	25%
10	14%	10%	24%

**Table 5** summarizes the average amount of change for the 5 original sections and demonstrates that on average at Sections 4, 6 and 8 more than 40% of the wetted channel is either scoured or filled by more than 15 cm. This is a relatively large amount of change and speaks to the mobility of these sections.

A plot illustrating the wetted width during each survey is shown in **Figure 7**. Overall the sections show that wetted width varies more between the sections, than between surveys as the width does not consistently change between each survey in response to slight differences in the discharge at which the survey data were collected. This speaks to the overall dynamics of the sections, and how the availability of wetted habitat changes with time. In general, the wetted width varies more at the downstream section than the upstream sections, which is related to the channel geometry changing more at the downstream sites over time.

**Figure 7. Wetted width observed during each survey.**



**Table 6. Wetted channel width during survey.**

Date	Section							Daily Flow (m <sup>3</sup> /s)
	4	6	7	8	8.5	9	10	
25/10/2005	14.1	8.4		10.1		10.03	10.3	0.5
06/02/2006	11.6	9.1		10.8		13.6	1.55	1.6
05/04/2006	11.4	9.1		10.6		13.8	1.12	1.1
15/11/2007	9.8	12.7		8.1		19.3	3.66	3.7
25/01/2008	11.8	16.3		23.4		19.0	0.74	0.7
19/03/2008	8.5	15.2		11.3		14.7	1.13	1.1
28/10/2009	15.3	16.8		7.4		12.0	1.03	1.0
03/02/2010	15.9	7.0		7.5		9.9	0.79	0.8
18/03/2010	13.8	9.2		7.6		10.1	1.31	1.3
01/11/2011	13.1	14.7		8.0		12.5	1.57	1.6
23/02/2012	17.6	16.3	16.0	9.2		14.1	3.04	3.0
31/01/2013	17.7	12.5	12.9	10.4	14.1	15.6	3.61	3.6
26/09/2013	17.7	13.4	12.1	8.1	11.2	14.7	1.16	1.2
27/02/2014	16.8	8.8	7.5	8.4	10.3	15.4	0.81	0.8
02/04/2014	10.0	9.3	7.7	8.5	9.7	15.5	1.03	1.0

**Table 7. Percent of wetted channel that was not wetted during previous survey.**

Date	Section							Daily Flow (m <sup>3</sup> /s)
	4	6	7	8	8.5	9	10	
06/02/2006	6.9%	25.3%		6.5%		4.4%	25.0%	1.6
05/04/2006	9.6%	9.9%		0.9%		1.4%	10.9%	1.1
15/11/2007	36.7%	41.7%		3.7%		28.5%	20.8%	3.7
25/01/2008	27.1%	22.1%		65.4%		0.0%	0.0%	0.7
19/03/2008	20.0%	2.0%		0.0%		0.0%	0.0%	1.1
28/10/2009	44.4%	23.8%		0.0%		0.0%	33.6%	1.0
03/02/2010	17.0%	0.0%		9.3%		0.0%	0.0%	0.8
18/03/2010	2.9%	41.3%		1.3%		5.0%	3.8%	1.3
01/11/2011	22.9%	39.5%		5.0%		19.2%	32.2%	1.6
23/02/2012	28.4%	9.8%		14.1%		11.3%	5.0%	3.0
31/01/2013	3.4%	44.0%	17.1%	11.5%		10.9%	11.0%	3.6
26/09/2013	4.5%	6.7%	10.7%	0.0%	0.0%	0.0%	0.0%	1.2
27/02/2014	0.6%	2.3%	14.7%	3.6%	0.0%	8.4%	0.8%	0.8
02/04/2014	0.0%	5.4%	3.9%	2.4%	2.1%	0.6%	5.2%	1.0

### 3.2.1 SECTION 4

Section 4 (XS 4) is located immediately downstream from a rock weir. The creek channel below the weir is subject to seasonal backwater from the Fraser River during the late spring freshet when bed filling of up to a metre or more can occur.

Over the course of the project, monitoring surveys have shown that this is an active section of channel, with aggradation occurring during the summer when high water on Fraser River creates a backwater effect. This deposited material is then reworked and eroded during high creek flows in the autumn and winter. Between September 2013 and February 2014, 80% of the wetted channel was scoured by more than 15 cm. A further 3% of the channel was scoured by more than 15 cm between February and April (**Table 4**).

As noted in the year 7 monitoring report (NHC, 2012), XS 4 had experienced significant erosion between February 2010 and February 2012. Between February 2013 and September 2013, 70% of the wetted channel had aggraded by more than 15 cm. As part of this aggradation, a large right bank bar formed. The majority of this recently deposited sediment was again eroded away by April 2014, such that the channel returned to the shape it had in February 2012.

### 3.2.2 SECTION 6

The 171 m long channel reach in which XS 6 is located is roughly 100 m upstream of the rock weir and the section is located in a generally widened section of channel characterized by frequent bar deposits. Previous reports (NHC, 2012) have shown the thalweg had remaining relatively fixed in position along the left bank prior to February 2012.

The mid channel bar formations have experienced significant change over the monitoring program, while the small channel along the right bank has remained relatively fixed in location. Between September 2013 and February 2014, 7% of the channel width filled more than 15 cm. No substantial changes occurred during the incubation period (**Table 4**). In most previous years substantially larger changes have occurred at this site.

### 3.2.3 SECTION 7

Section 7 (XS 7) was established in February 2012 at the widest (~60 m) and most morphologically complex section of channel. The thalweg is bounded by a large point bar on the left bank and mid channel bar near the right bank. A smaller, shallow secondary channel is found adjacent to the right bank (**Figure 1**).

An engineered log jam on the right bank bend immediately downstream of the section protects the right bank from large scale erosion, and helps maintain the channel alignment. The channel is progressively migrating towards the left bank (**Figure 4**) and 31% of the channel scoured more than 15 cm between September 2013 and February 2014. No significant changes occurred during the incubation period (**Table 4**).

### 3.2.4 SECTION 8

Section 8 is located within a length of channel that exhibits similar morphology to that found at XS 6 downstream. This cross section is representative of a 164 m section of channel, and has lock-blocks protecting the left bank. The morphology at this section has become more complex since 2008-2009 as a minor chute channel has developed and enlarged, bifurcating an existing, extensive point bar deposit, and the main channel thalweg has deepened.

From September 2013 to February 2014, 19% of the wetted width aggraded by more than 15 cm. During the incubation period that followed (February to April 2014), 10% of the wetted width degraded by more than 15 cm. These changes are less than the long term average and suggest fry survival should be higher for the 2013-2014 winter.

### 3.2.5 SECTION 8.5

Sections 8.5 was established in September 2013 to monitor potential changes to the large right bank lateral bar in this river reach. The left bank at this section is reinforced by lock-blocks, which may result in increased channel incision. The survey of this section was repeated in February and April 2014 and no significant changes were observed during this period.

### 3.2.6 SECTION 9

Sections 9 (XS 9) is also located within the incised length of channel on the upper fan (Photo Documentation Points 8 and 9) and was initially chosen to be representative of a section of channel which extends 108 m in length (the shortest representative length of all study sections). The section has a trapezoidal channel shape, characterized by a flatbed that gently slopes downward towards the left bank terrace, exposing a minor right bank lateral bar at lower flows. During the fall spawning period and winter incubation period of 2013-2014, no changes greater than 15 cm were observed at this site.

### 3.2.7 SECTION 10

Section 10 (XS 10) is located in an incised portion of channel below the anadromous barrier. This section represents a portion of the channel extending from the mid-point between XS 9 and XS 10 to the anadromous barrier located 280 m upstream. In previous years it has exhibited a simple morphology characterized by a well-established lateral bar on the right bank that gently slopes towards the left bank thalweg.

Some erosion of the right side lateral bar within the channel and deposition within the left bank thalweg and against the left bank has recently been measured, creating a more flatbed profile. There are occasional boulders found within the wetted low flow channel that would only move during very high flows. During the fall spawning period and winter incubation period of 2013-2014 no changes larger than 15 cm were observed at this site.

### 3.3 SUBSTRATE QUALITY MONITORING

Substrate photographs were analysed by measuring the b-axis of each particle underlying a grid node from the digital photographs using GIS software. A metal bar of known dimensions that is placed on the bed when the photos are taken is used to scale each image. A 64 mm x 64 mm 'digital' sampling grid was created in the GIS and superimposed on the digital images.

The dimensions of each measured particle are measured to the nearest tenth-millimetre and stored in a database. All clasts smaller than 1 mm (the upper limit for coarse sand) were assigned an arbitrary value of 0.5 mm. The b-axis dimension of particles smaller than 1 mm cannot be reliably measured from the substrate photographs. Size fractions are based on particle counts for different size classes, so it is not necessary to have an accurate measurement of grains less than 1 mm diameter.

The actual number of samples that can be obtained from each photo depends upon the bed material texture, with fewer counts recorded where there are clasts larger than 64 mm. By taking 6 photos along each transect, a total of 100 grains are typically measured. **Table 8** summarizes the number of stones measured each year at each site.

The average  $D_{84}$ ,  $D_{50}$  and  $D_{16}$  for the duration of the study, at each site is summarized in **Table 9**, while

**Figure 8** through **Figure 10** display the temporal trend in grain size. In

**Figure 8** through **Figure 10**, individual photos are treated as individual samples and results are presented as box plots to show the between photo variability as well as general trends. Overall the data show that the channel consistently fines downstream and that the largest grain sizes in the bed are typically cobbles (> 64 mm).

**Table 8. Number of sediment clasts sampled at each site.**

Date Sampled	Section						
	4	6	7	8	8.5	9	10
06/02/2006	354	332	84		299		211
06/02/2006	304	229	361		341		308
05/04/2006	81	82	81		82		74
15/11/2007	170	185	129		132		167
25/01/2008	322	216	64				104
19/03/2008	278	370	299		390		206
28/10/2009	188	311	109		139		104
03/02/2010	254	250	281		261		146
18/03/2010	106	114	138		124		104
01/11/2011	99	103	102		128		109
23/02/2012	208	230	174	274	200		190
26/09/2013	128	72	88	63	94	71	99
27/02/2014	91	87	96	90	91	81	94
02/04/2014	153	139	146	125	186	123	115

**Table 9. Average  $D_{84}$ ,  $D_{50}$ ,  $D_{16}$  observed at each study site over the period of the study.**

Date Sampled	$D_{84}$						
	4	6	7	8	8.5	9	10
06/02/2006	104	127		73		67	94
06/02/2006	126	162		64		100	107
05/04/2006	118	105		53		106	142
15/11/2007	68	72		43		87	126
25/01/2008	133	116				83	116
19/03/2008	81	54		101		125	118
28/10/2009	60	105		29		88	143
03/02/2010	119	42		14		102	124
18/03/2010	129	30		29		145	125
01/11/2011	78	115		46		132	157
23/02/2012	84	139	85	34		106	125
26/09/2013	75	82	73	57	130	101	164
27/02/2014	159	90	141	61	142	130	102
02/04/2014	161	89	109	47	120	109	151

Date Sampled	$D_{50}$						
	4	6	7	8	8.5	9	10
06/02/2006	65	72		39		32	40
06/02/2006	62	67		30		36	38
05/04/2006	57	52		26		26	46
15/11/2007	39	39		24		37	54
25/01/2008	44	55				30	51
19/03/2008	36	26		25		46	48
28/10/2009	22	43		14		35	64
03/02/2010	36	17		7		34	48
18/03/2010	74	10		18		47	47
01/11/2011	37	54		25		58	63
23/02/2012	34	86	51	10		48	41
26/09/2013	44	37	34	16	75	32	42
27/02/2014	68	35	75	11	86	53	55
02/04/2014	95	40	50	20	57	50	62

Date Sampled	D <sub>16</sub>						
	4	6	7	8	8.5	9	10
06/02/2006	42	42		18		16	18
06/02/2006	20	25		7		4	6
05/04/2006	13	17		11		8	13
15/11/2007	17	19		13		15	26
25/01/2008	16	25				13	15
19/03/2008	8	8		3		15	15
28/10/2009	8	23		8		14	21
03/02/2010	15	8		4		11	17
18/03/2010	14	5		9		14	18
01/11/2011	11	16		9		15	22
23/02/2012	12	24	12	3		17	15
26/09/2013	12	12	18	4	26	8	13
27/02/2014	17	10	23	2	42	16	27
02/04/2014	25	9	22	13	28	15	22

Figure 8. D<sub>84</sub> measured at each site.

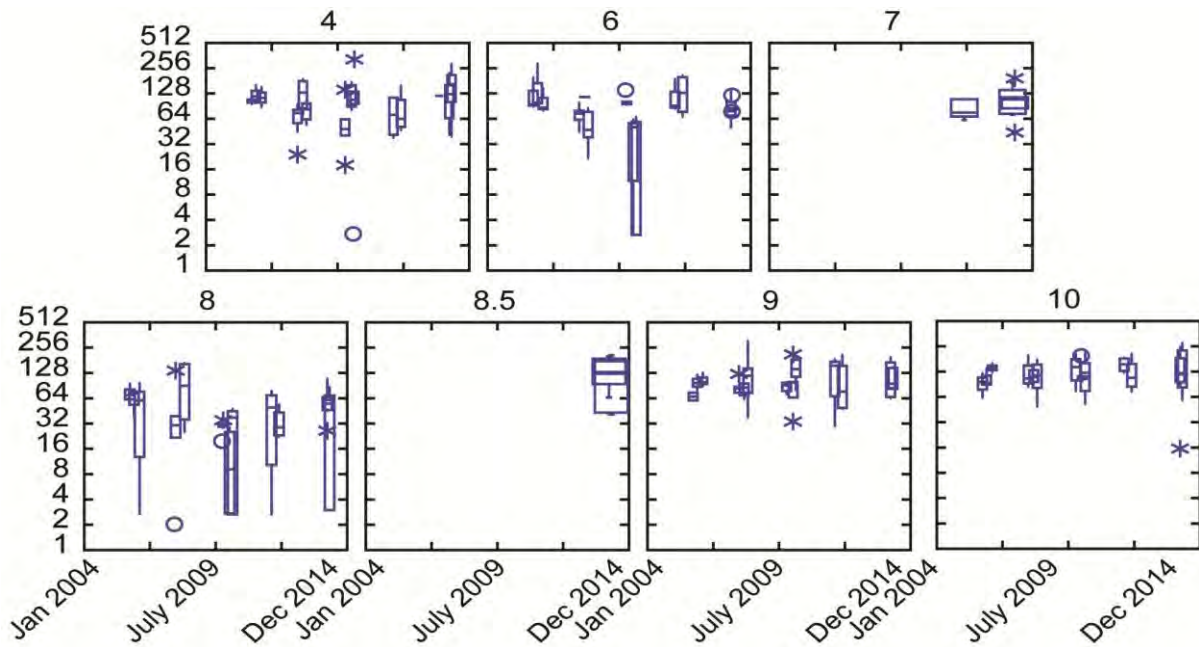




Figure 9.  $D_{50}$  measured at each site.

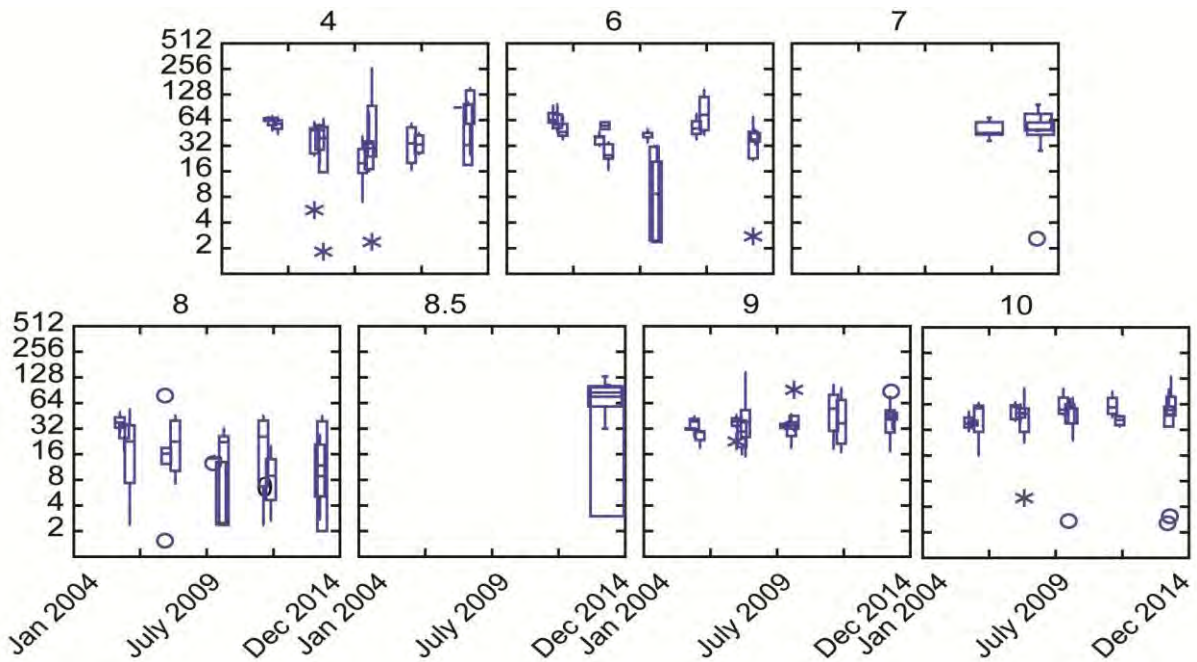
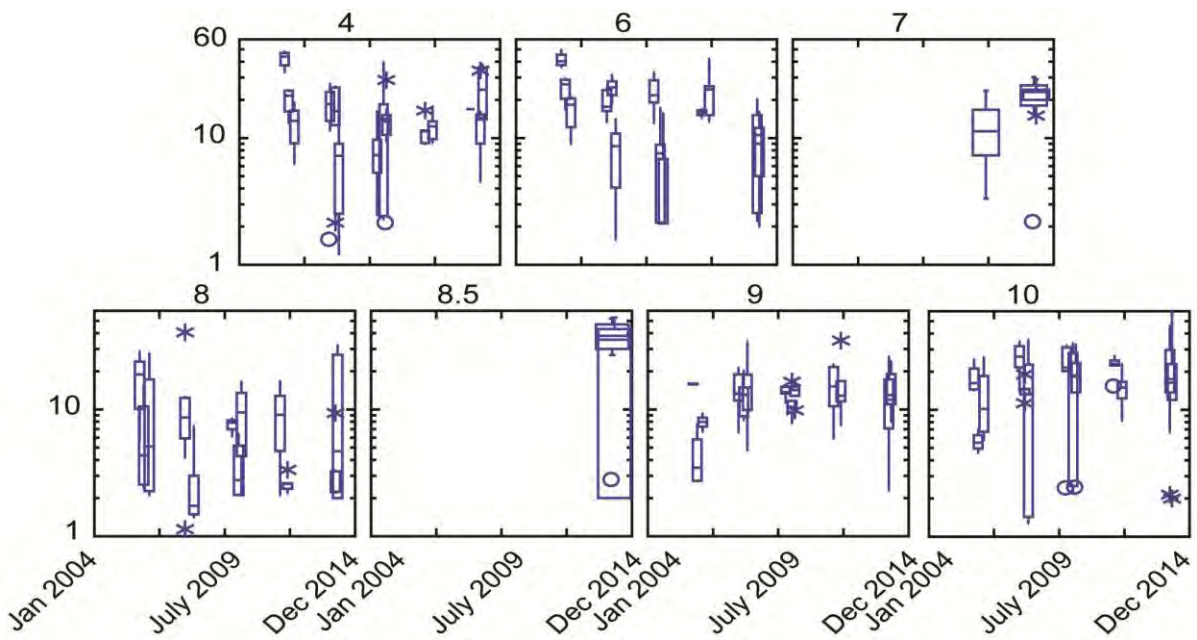


Figure 10.  $D_{16}$  measured at each site.



**Table 11** illustrates the proportion of the bed that is sand (2 mm or finer). Overall a relatively small amount of the channel is covered with sand. To provide an understanding of the amount of the bed covered by fine gravel, the percent of the bed composed of 8 mm or finer material is summarize in **Table 12**.

**Table 10. Percent of surface grain size distribution classified as 1 mm or finer.**

Date Sampled	Percentage of the sampling sites covered by sand						
	4	6	7	8	8.5	9	10
08/12/2005	0.0%	0.0%		0.0%		0.0%	0.0%
06/02/2006	0.0%	0.0%		0.0%		0.0%	0.0%
05/04/2006	4.9%	1.2%		36.2%		0.0%	0.0%
15/11/2007	0.0%	0.0%		0.0%		0.0%	0.0%
25/01/2008	0.0%	0.0%				0.0%	0.0%
19/03/2008	0.0%	0.0%		0.0%		0.0%	0.0%
28/10/2009	5.2%	1.8%		2.9%		2.0%	7.7%
03/02/2010	9.8%	16.8%		42.0%		1.8%	9.0%
18/03/2010	16.7%	60.4%		33.3%		2.5%	5.7%
01/11/2011	0.0%	0.0%		28.6%		0.0%	0.0%
23/02/2012	0.0%	0.0%	3.6%	28.6%		2.9%	5.7%
26/09/2013	0.0%	4.3%	24.6%	17.8%	8.2%	12.6%	2.7%
27/02/2014	1.0%	20.0%	2.1%	48.4%	2.6%	4.5%	19.2%
02/04/2014	0.7%	12.7%	0.9%	41.7%	21.5%	0.8%	12.2%

**Table 11. Proportion of surface grain size distribution finer than 2 mm.**

Date Sampled	Percentage of the sampling sites covered by sand						
	4	6	7	8	8.5	9	10
08/12/2005	0	1		6		6	4
06/02/2006	6	4		18		15	10
05/04/2006	6	2		40		5	1
15/11/2007	8	0		16		1	0
25/01/2008	8	0				4	4
19/03/2008	17	7		24		1	13
28/10/2009	6	2		4		2	8
03/02/2010	14	42		53		2	17
18/03/2010	17	60		33		3	6
01/11/2011	0	1		29		0	0
23/02/2012	3	0	4	31		5	8
26/09/2013	1	7	25	21	8	13	3
27/02/2014	1	21	2	48	3	5	19
02/04/2014	1	13	1	42	21	2	13

**Table 12. Proportion of surface grain size distribution finer than 8 mm.**

Date Sampled	Percentage of the sampling sites covered by sand						
	4	6	7	8	8.5	9	10
08/12/2005	0	1		9		11	8
06/02/2006	11	9		24		23	26
05/04/2006	13	14		45		26	17
15/11/2007	16	9		38		13	3
25/01/2008	15	1				19	11
19/03/2008	28	18		45		14	19
28/10/2009	30	5		36		11	8
03/02/2010	21	48		71		19	19
18/03/2010	27	65		44		12	9
01/11/2011	18	7		36		10	4
23/02/2012	17	7	16	54		14	16
26/09/2013	15	19	26	40	15	24	13
27/02/2014	11	25	3	50	5	9	19
02/04/2014	4	23	3	46	24	9	19

### 3.3.1 SECTION 4

Prior to November 2011, there was a variable amount of fines present within the samples collected near this section (**Figure 10**). This variability was representative of the material that was alternately transported downstream to this point and deposited, and then episodically eroded away. However, between November 2011 and the following monitoring event in February 2012, there was significant erosion of the lateral bar formation at this location. This may have scoured away surficial fine sediment from within the channel.

Despite significant deposition within the channel between February 2012 and September 2013, only 1% of the bed was sand in September 2013. Between September 2013 and April 2014 there was again significant erosion of the recently deposited lateral bar. All of the monitoring dates within this period showed a very low percentage of fine gravel at this location (**Table 12**).

### 3.3.2 SECTION 6

There was an overall increase in the amount of surficial fine gravel between the last monitoring event of Year 7 (February 23, 2012), and the first monitoring event of Year 9 (September 26, 2013). As discussed previously, there was a significant shift in the cross sectional profile of this site during this time period, where the thalweg moved from the left toward the right bank, indicating significant erosion and deposition.

By February 2014, the fraction of bed covered by sand had been increased to 21% (**Table 11**). By April 2014 this fraction had been reduced to 13%, but still remained relatively fine as the percent less than 8 mm was 20% (**Table 12**).

### 3.3.3 SECTION 7

Between the end of the Year 7 monitoring and the beginning of the Year 9 monitoring period, the percentage of sand at Section 7 had increased dramatically from 4 to 25 percent (**Table 11**) and the percentage of the bed finer than 8 mm increased from 16 to 26% (**Table 12**). By February 2014, the fine gravel and sand had eroded and the bed was dominated by coarse gravel and cobbles.

### 3.3.4 SECTION 8

There have been substantial changes at Section 8 in each of the grain size classes during the monitoring program and the grain size is typically finer than the other sections. This has continued through the Year 9 monitoring period (**Table 11** and **Table 12**) and the section continues to display a high degree of spatial variability and overall fine grain size distribution (

**Figure 8** through **Figure 10**)

### 3.3.5 SECTION 8.5

Section 8.5 is a new section as of September 2013, and has experienced no significant shifts in cross sectional profile as of April 2014. Between September 2013 and February 2014 there was a loss of fine gravel and sand, while between February 2014 and April 2014 there was a substantial increase in the percentage of sand and fine gravel (**Table 11** and **Table 12**). These changes are likely reflective of transient finer material being deposited and eroded during subsequent monitoring events and highlight how fine sediment can move through the study area without significantly changing the topography of the bed.

### 3.3.6 SECTION 9

Section 9 is steeper, narrower and faster flowing than the downstream cross sections. As a consequence, the very fine sediment fraction has consistently remained very low (**Table 11** and **Table 12**) with the exception of September 2013, when the sand fraction rose 8 percentage points to 13%. By February 2014, the majority of the sand and fine gravel was eroded, and the  $D_{50}$  became coarser than any of the previous sampling periods (**Table 9**). Likewise the percent sand and percent less than fine gravel was at an all-time low.

### 3.3.7 SECTION 10

Section 10 has a similar morphologic configuration to Section 9 and the grain size has remained relatively constant over time (

**Figure 8** through **Figure 10**). This is likely related to the presence of the occasional large rock and boulders that create sheltered areas where finer sediments can deposit. There was very little change between the end of Year 7 (February 2012) and the start of the Year 9 monitoring (September 2013), with only a slight decrease in very fine material to 3% (**Table 11** and **Table 12**). However by February 2014, sand composed 19% of the bed area. April surveys show a return to more typical values, as the amount of sand has reduced to 13%.

## 4 ANALYSIS: RELATION BETWEEN PEAK FLOWS, HABITAT, SUBSTRATE AND EGG-TO-FRY SURVIVAL

To quantify salmonid productivity, pink and chum salmon escapement has been monitored in Lower Jones Creek for a number of years (Greenbank and Macnair, 2008, 2012, 2014). In the subsequent spring, fry escapement has been quantified and the egg-to-fry survival for the spawning and incubation period determined. Summary data from these studies are provided in **Table 13**. These data can be used to examine the following two management questions:

3)1) Is channel stability in Lower Jones Creek limiting fish productivity; and

4)2) Is substrate quality in Lower Jones Creek limiting fish productivity?

In order to address the first question, the following hypotheses are to be tested:

H<sub>1</sub> In consideration of improvements to spawning habitat through increased spawning and incubation flows, fish productivity is not correlated to habitat instability in the anadromous reach of lower Jones Creek.

H<sub>1a</sub> Fish productivity is not correlated to channel instability as measured by cross sectional areas of scour and fill in the anadromous reach.

H<sub>1b</sub> Fish productivity is not correlated to channel instability as measured by lateral channel migration involving abandonment of spawning habitat in the anadromous reach.

In order to address the second question, the following hypothesis will also be addressed:

H<sub>2</sub> In consideration of improvements to spawning habitat through increased spawning and incubation flows, fish productivity is not correlated to substrate quality as measured by substrate particle size in the anadromous reach of lower Jones Creek.

In order to test if egg-to-fry survival can be correlated to changes in substrate grain size or channel stability the changes observed at of the geomorphology cross sections were weighted using fish spawning density. Spawning density is broken down into four regions that were assigned to the geomorphology sections as per **Table 14**. The two new sections (7 and 8.5) were not used for this analysis.

Weighted changes in channel morphology and grain size were then calculated for both the spawning and incubation periods. Correlation coefficients were then developed between these metrics and egg-to-fry survival for both pink and chum salmon, and the combined egg-to-fry survival. Each of the hypotheses are examined below.

H<sub>1a</sub> Fish productivity is not correlated to channel instability as measured by cross sectional areas of scour and fill in the anadromous reach.

The maximum discharge, and weighted scour, fill and change metrics for the spawning and incubation period were also calculated and are provided in **Table 13**. These metrics also did not correlate with egg-to-fry survival ratio at the  $p = 0.05$  level. As such it is not possible to reject the null hypothesis (H<sub>1a</sub>) that fish production is not correlated to channel vertical stability or grain size, based on the 5 study years.

H<sub>1b</sub> Fish productivity is not correlated to channel instability as measured by lateral channel migration involving abandonment of spawning habitat in the anadromous reach.

To assess if channel lateral stability is correlated with egg-to-fry survival ( $H_{1b}$ ) the proportion of the wetted channel that was not wetted during the previous survey was determined for each cross-section. This was then weighted using the fish use data as per **Table 14**. The lateral change metrics, summarized in this manner, did not correlate with egg-to-fry survival ratio at the  $p = 0.05$  level. As such it is not possible to reject the null hypothesis ( $H_{1b}$ ) that fish production is not correlated to channel lateral stability based on the 5 study years.

The data are shown in **Figure 13** and indicate a weak relationship between pink egg-to-fry survival and percent of channel width that is newly wetted for the incubation period; however, the spawning period data do not show a trend and have a wider range in the percent of the wetted channel that changed.

H<sub>2</sub> In consideration of improvements to spawning habitat through increased spawning and incubation flows, fish productivity is not correlated to substrate quality as measured by substrate particle size in the anadromous reach of lower Jones Creek.

To assess if substrate is related to egg-to-fry survival the proportion of the bed that is sand (< 2 mm) and the proportion that is fine gravel or smaller (< 8 mm) was correlated with the egg-to-fry survival. These metrics were specified in the WUP monitoring program based on metrics in Tappel and Bjornn (1983). Tappel and Bjornn relate large amounts of sand and fine gravel in the substrate to poor egg-to-fry survival. The correlation analysis revealed that none of the grain size metrics ( $D_{16}$ ,  $D_{50}$ ,  $D_{84}$ , % < 1 mm, % < 2 mm, % < 8 mm) were correlated with egg to fry survival.

In **Figure 14** the data from Jones Creek are plotted on top of the Tappel and Bjornn (1983) figure relating egg to fry survival to the percent of the sediment less than 9.5 mm and 0.85 mm. Note that the Jones Creek data are plotted using the percent of the sediment less than 8 mm and 1 mm. More importantly, the Tappel and Bjornn (1983) bioassay is based on subsurface grain size distributions, while the Jones Creek data are based on surface grain size distributions, and as such, they cannot be directly compared.

In general surface grain size distributions are coarser and lack the fine end of the distribution as this material is winnowed away. The surface grain size distribution suggests that egg-to-fry survival should not be limited in Jones Creek, yet the egg-to-fry survival is low. Young *et al.* (1991) also provide relations that related survival to emergences to the subsurface geometric mean of sediment. Using these relations, and the **surface** grain size distributions suggest that the geometric mean (see  $D_{50}$  in **Table 9**) is substantially larger than values that are associated with reduced emergence rates (15 mm and smaller). If the surface to subsurface ratio were 2, which is reasonable for a high sediment supply rain dominated system like Jones Creek (Hassan et al., 2006), the geometric mean would still be large enough that it wouldn't be expected to impede survival.

In general, based on the site photos, grain size data and nature of sediment supply and channel mobility it is likely that the subsurface grain size distribution is sufficiently coarse that the overall grain size of the bed is not impeding survival. However, the concentration of finer sand and silt in the subsurface is unknown. Finer sand and silt can have a significant effect on egg survival (Levasseur *et al.*, 2006) and site visits show that Jones Creek certainly transports a large quantities of fine sediment at relatively low flows (**Figure 15**). This fine sediment could infiltrate into the subsurface and impact egg survival.

Figure 11. Relationship between egg to fry survival and proportion of channel experiencing more than 15 cm of scour, fill or either change within the wetted channel width.

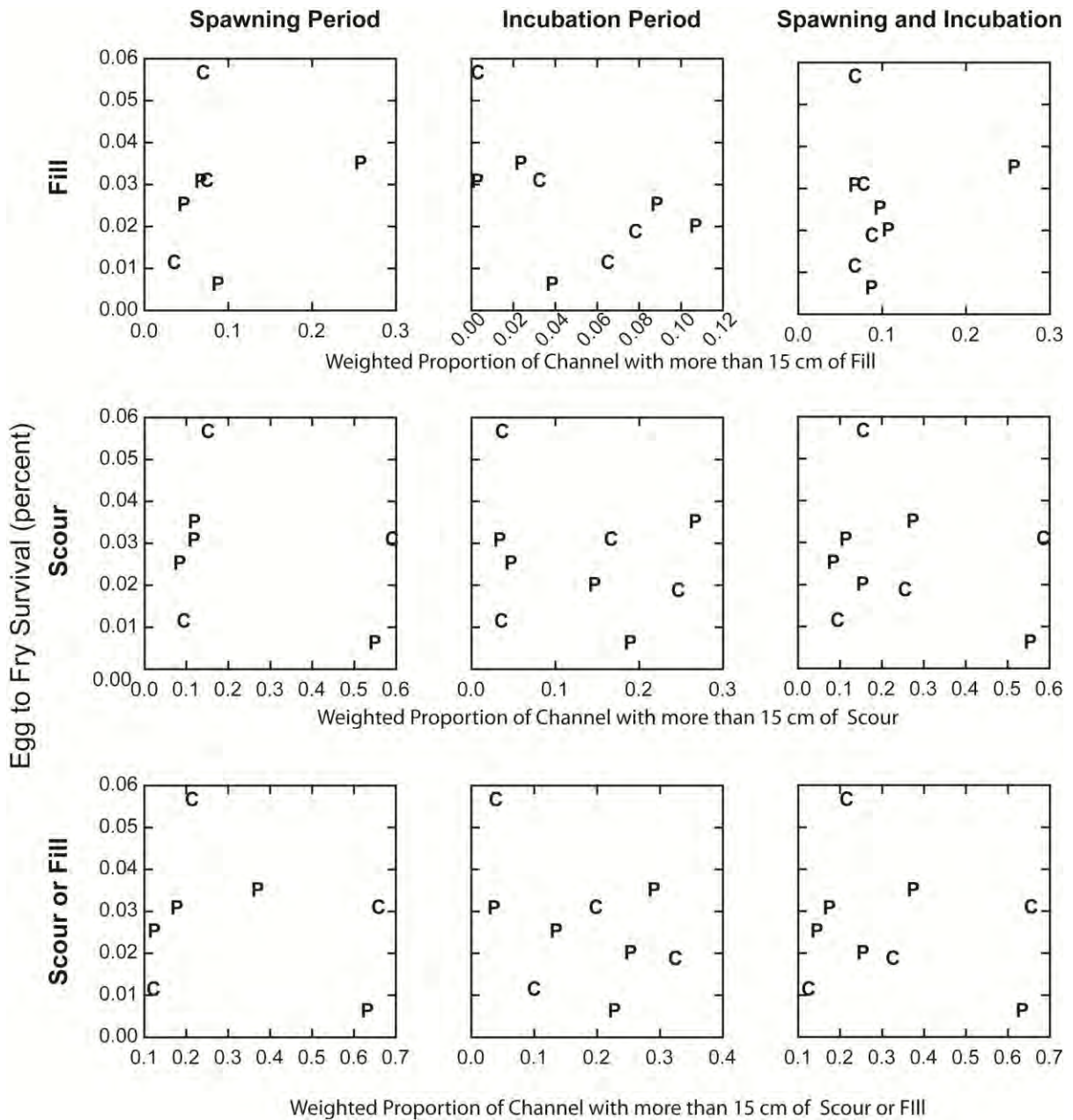


Figure 12. Relationship between maximum instantaneous discharge and grain size metrics and the egg to fry survival for Pink (P) and Chum (C).

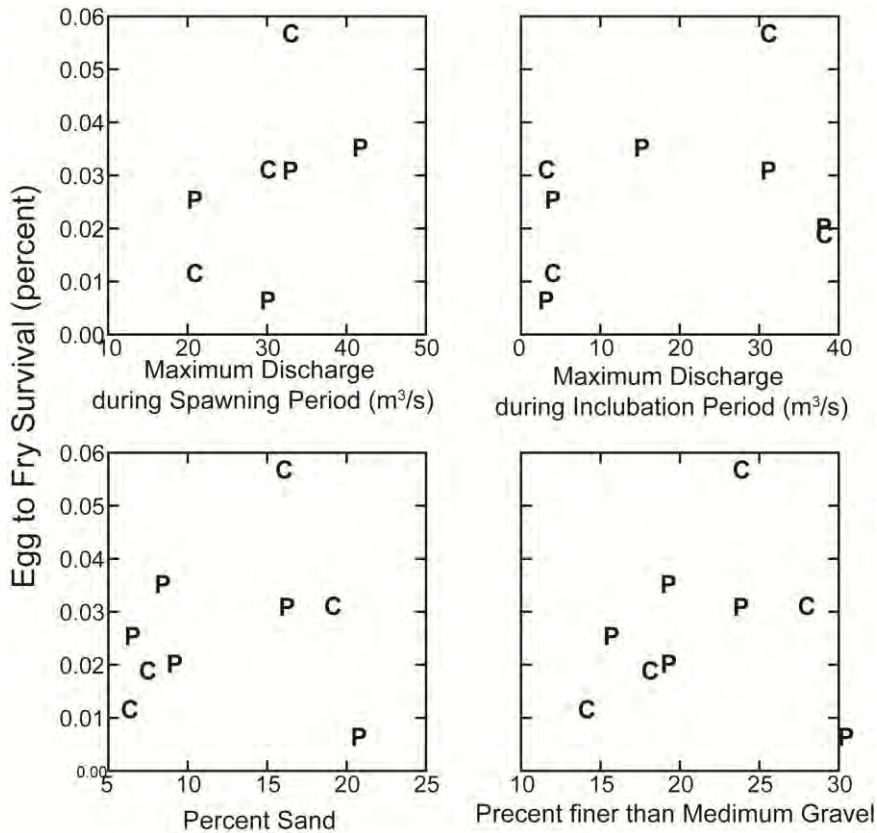


Figure 13. Relationship between egg to fry survival and the percentage of the wetted channel that was wetted during the survey that was not wetted during the previous survey for Pink (P) and Chum (C) salmon.

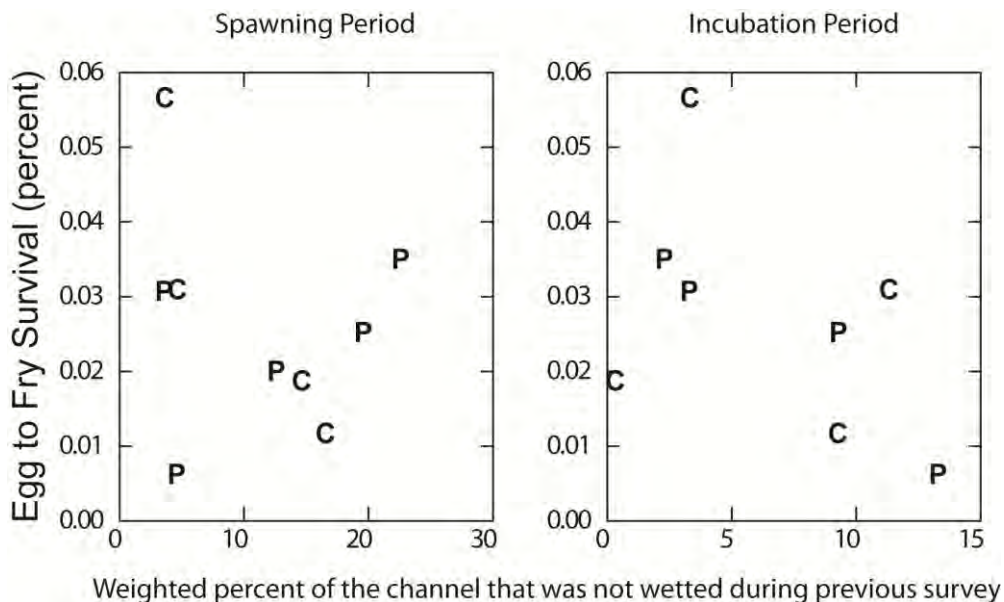




Figure 14. Surface grain size distribution data plotted on Tappel and Bjornn figure showing egg to fry survival for Pink (P) and Chum (C) as a function of percent substrate smaller than 9.5 mm and 0.85 mm

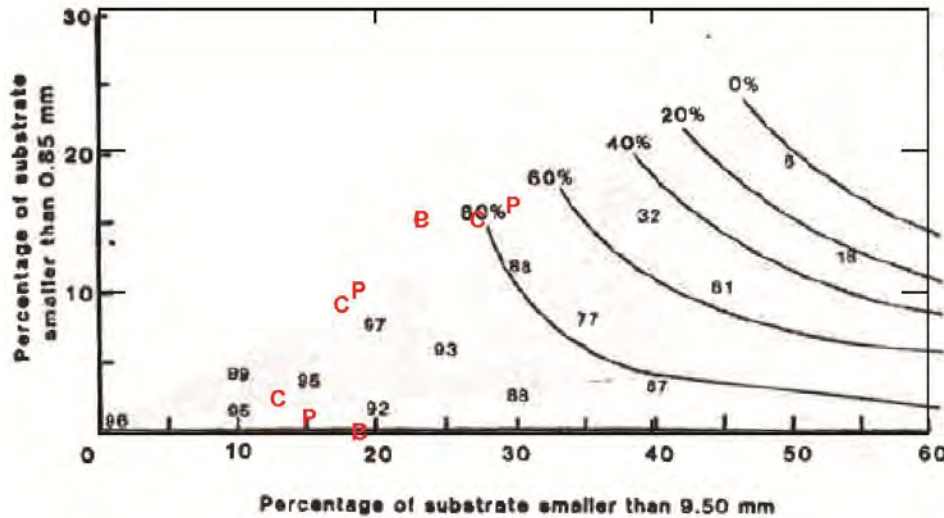


Table 13. Egg-to-fry survival and weighted grain size and channel change metrics, as well as peak flow during spawning and incubation period.

Period	Egg-to-fry survival	Average % of bed covered in sand during surveys	Average % of bed covered in medium gravel or finer sediment during surveys	Instantaneous Peak flow (m <sup>3</sup> /s)	Weighted Proportion of channel with significant fill	Weighted Proportion of channel with significant scour	Weighted Proportion of channel with significant change
<b>Chum Salmon</b>							
2005	1.17%	6%	14%	20.0	6%	8%	11%
2007		8%	19%	40.8	21%	29%	41%
2009	3.13%	19%	27%	29.2	7%	57%	64%
2011	1.91%	7%	18%	37.2	8%	24%	31%
2013	5.70%	16%	23%	32.0	6%	14%	20%
<b>Pink Salmon</b>							
2005	2.56%	6%	15%	20.0	9%	7%	13%
2007	3.54%	8%	19%	40.8	25%	26%	36%
2009	0.66%	20%	30%	29.2	8%	54%	62%
2011	2.04%	9%	19%	37.2	10%	14%	24%
2013	3.11%	16%	23%	32.0	6%	10%	16%

**Table 14. Division of fish spawning density among the 5 long-term geomorphology sections.**

Geomorphology Monitoring Section	Fish spawning regions			
	S1	S2	S3	S4
4	100%	100%	4%	0%
6	0%	0%	30%	0%
8	0%	0%	29%	0%
9	0%	0%	19%	0%
10	0%	0%	18%	100%

**Figure 15. Jones Creek on October 30<sup>th</sup>, 2015. Discharge was 3.3 m<sup>3</sup>/s**



## 5 SUMMARY

The assessment of channel stability on lower Jones Creek was established by BC Hydro as part of the Wahleach Water Use Plan monitoring program to investigate the extent to which the physical stability of the channel bed and substrate grain size distribution limit fish productivity. In particular the purpose of the study is to assess the following two management questions:

- 1) Is channel stability in Lower Jones Creek limiting fish productivity; and
- 2) Is substrate quality in Lower Jones Creek limiting fish productivity?

In order to address the first question, the following hypotheses are to be tested:

- H<sub>1</sub> In consideration of improvements to spawning habitat through increased spawning and incubation flows, fish productivity is not correlated to habitat instability in the anadromous reach of lower Jones Creek.
- H<sub>1a</sub> Fish productivity is not correlated to channel instability as measured by cross sectional areas of scour and fill in the anadromous reach.
- H<sub>1b</sub> Fish productivity is not correlated to channel instability as measured by lateral channel migration involving abandonment of spawning habitat in the anadromous reach.

In order to address the second question, the following hypothesis will also be addressed:

- H<sub>2</sub> In consideration of improvements to spawning habitat through increased spawning and incubation flows, fish productivity is not correlated to substrate quality as measured by substrate particle size in the anadromous reach of lower Jones Creek.

Fish productivity was established as the egg-to-fry survival of pink and chum salmon that utilize lower Jones Creek. Channel stability and substrate quality are physically evaluated at seven (7) previously established cross sections through repeat topographic surveys and photogrammetric sampling of the substrate.

The assessment and field program extends from mid-October to mid-March during odd (pink salmon spawning) years to coincide with peak spawning and end of incubation dates for pink and chum salmon. During Year 9 of the program the channel was generally more stable than previous years and scour and fill were relatively reduced. Cross section 4 (XS 4) continued to experience a relatively large amount of change; however, fish use is limited at this location.

The data provided by BC Hydro shows that minimum flow targets were not met on 14 days during the spawning cycle, and daily flow data is missing for 13 additional days during this period. Flows were above target until October 16<sup>th</sup>, 2013, at which time they dropped due to a cold clear weather period. Based on a neighbouring gauge, it is likely that flows were below target during the data gap that extends from October 28<sup>th</sup> till November 9<sup>th</sup>, 2013. Flows were still above pre-WUP flows, and salmon spawning during the period were able to access a large area of spawning substrate (Greenbank and Macnair, 2014).

Repeat channel cross section surveys were used to assess the vertical and lateral stability of the channel. On average, sections 4, 6 and 8 experience more than 15 cm of scour or fill across more than 40% of the wetted channel each year. This is a relatively large amount of change and speaks to the overall mobility of the channel and bank sediments. Sections 9 and 10 are relatively more stable, but still experience some significant scour and fill. Wetted width data from the surveys demonstrates that the wetted width varies more between the sections, than between surveys and this speaks to the overall dynamics of the sections. During Year 9 of the monitoring program the channel morphology was more stable than most of the preceding years.

A main physical characteristic related to substrate quality and fish productivity is the fraction of the bed composed of medium and fine gravel, and sand. As a first order approximation, the surface grain size can be used to provide some information about the subsurface distribution. As such the surface grain size distribution has been monitored at each cross section. Results from the Year 9 study show that the surface grain size distribution was about the same as during the previous 4 years.

To assess if fish productivity was related to channel stability ( $H_{1a}$  and  $H_{1b}$ ), a correlation analysis was completed with egg-to-fry survival data from Greenbank and Macnair (2014) and channel morphology metrics (scour, fill and change within the wetted cross section). No significant correlations were observed. A similar analysis was completed for the mean percent of the surface substrate composed of medium gravel and sand ( $H_2$ ) and no correlation was found. As such it was not possible to reject any of the null hypothesis at the  $p=0.05$  level.

On initial analysis, these results suggest that physical stability and grain size does not affect egg-to-fry survival; however, the repeat surveys show that the channel morphology and grain size is highly variable during all the study years. There are several potential reasons for the lack of correlation:

1. The observed range in egg-to-fry survival is not sufficient to provide enough statistical power.
2. The current physical measurements are not sufficiently precise or of required spatial and temporal coverage to measure channel instability.
3. The current range of channel instability is above a threshold limit such that there is no underlying correlation to egg-to-fry survivals.
4. There is a combination of both physical and biological factors that pose a more fundamental limit on egg-to-fry survivals that is not captured with the current analyses or monitor.

The most important observation from grain size and morphology studies is that lower Jones Creek is an especially dynamic channel that is modified throughout the spawning and incubation period during most years. These conditions are not ideal for fish production, yet Jones Creek continues to produce a large number of fry. Successful fry production relies on a large number of spawning adults, spawning over a large spatial area, so there is a high probability of some areas not being disturbed each year.

A comparison of the grain size distribution at the sites, based on surface samples, and existing biostandards of egg survival was also completed. This analysis suggested that the grain size of the bed may not be limiting egg survival. However, the biostandards are based on sub-surface grain size distributions, not surface grain size distributions, so the results should not be relied upon. No subsurface samples have been collected at Jones Creek.

Additional studies examining the spatial variability of intergravel flow, fine sediment loading throughout the spawning and incubation period, as well as the quality of the substrate immediately after spawning would improve our understanding of the factors effecting egg-to-fry survival. These should be incorporated with the ongoing egg survival studies using egg baskets within Jones Creek.

## 6 REFERENCES

- BC Hydro (2004). *Waleach Project Water Use Plan: Revised for Acceptance by the Comptroller of Water Rights*. BC Hydro Generation, Burnaby, BC. 37 pp.
- BC Hydro (2005). *Waleach Water Use Plan: Monitoring Program Terms of Reference*. Prepared for BC Hydro Waleach Water Use Plan Project, Burnaby, BC. 35 pp.
- Fripp, J. B., and Diplas, P. (1993). Surface sampling in gravel streams. *Journal of Hydraulic Engineering, ASCE*, 119(4), 473–490.
- Greenbank, J., and Macnair, J. (2008). *Wahleach Water Use Plan and Monitoring Program: Fish Productivity Monitoring in Lower Jones Creek, 2007-08*. Prepared by Greenbank Environmental Consulting for British Columbia Hydro & Power Authority. 37 pp. [online] Available from: [https://www.bchydro.com/content/dam/hydro/medialib/internet/documents/environment/pdf/wup\\_-\\_wahleach\\_wahmon1.pdf](https://www.bchydro.com/content/dam/hydro/medialib/internet/documents/environment/pdf/wup_-_wahleach_wahmon1.pdf) (Accessed 10 November 2014).
- Greenbank, J., and Macnair, J. (2012). *Lower Jones Creek Fish Productivity Monitoring WAHMON#1 Year & 2011-2012*. Prepared by Greenbank Environmental Services and Living Resources Environmental Services for British Columbia Hydro, Generation and Aboriginal Relations. 41 pp. [online] Available from: <https://www.bchydro.com/content/dam/BCHydro/customer-portal/documents/corporate/environment-sustainability/water-use-planning/lower-mainland/wahleach-project-water-use-plan-lower-jones-creek-fish-productivity-monitoring-year-07.pdf> (Accessed 10 November 2014).
- Greenbank, J., and Macnair, J. (2014). *Draft Lower Jones Creek Fish Productivity Monitoring WAHMON#1 Year 10 2013-2014*. Prepared for BC Hydro, Generation and Aboriginal Relations 6911. 51 pp.
- Hartman, G. F., and Miles, M. (1997). *Jones Creek Spawning Channel: Post-failure Analysis and Management Recommendations*. Report prepared for Habitat and Enhancement Branch, Fraser River Action Plan, Department of Fisheries and Oceans. 62 pp.
- Hassan, M. A., Egozi, R., and Parker, G. (2006). Experiments on the effect of hydrograph characteristics on vertical grain sorting in gravel bed rivers. *Water Resources Research*, 42, W09408. doi::10.1029/2005WR004707.
- Interfor (1996). *Excavation of Lower Jones Creek*. Stakeholder Report Prepared by Interfor, Hope, BC. 10 pp.
- Kondolf, G. M. (2000). Assessing salmonid spawning gravel quality. *Transactions of the American Fisheries Society*, 129, 262–281.
- Levasseur, M., Bergeron, N., Lapointe, M., and Berube, F. (2006). Effects of silt and very fine sand dynamics in Atlantic salmon (*salmo salar*) redds on embryo hatching success. *Canadian Journal of Fisheries and Aquatic Sciences*, 63, 1450–1459.

- Newbury Hydraulics (2004). *Lower Jones Creek Fish Fence Removal and Stream Restoration*. Prepared by Newbury Hydraulics for British Columbia Hydro & Power Authority, Okanagan Centre, BC. 10 pp.
- NHC (2012). *Waleach Water Use Plan monitoring program: Lower Jones Creek channel stability assessment. Year 7 Reporting*. Prepared by Northwest Hydraulic Consultants for BC Hydro, North Vancouver. 60 pp.
- Streamworks Unlimited (2006). *Lower Jones Creek 2006 Works As-built Report*. Prepared for British Columbia Hydro & Power Authority Engineering, Salmon Arm, BC. 6 pp.
- Tappel, P. D., and Bjornn, T. C. (1983). A new method of relating size of spawning gravel to salmonid embryo survival. *North American Journal of Fisheries Management*, 3, 123–135.
- Whitman, M., Moran, E., and Ourso, R. (2011). Photographic Techniques for Characterizing Streambed Particle Sizes. *Transactions of the American Society of Fisheries*, 132(3), 605–610.
- Young, M. K., Hubert, W. A., and Wesche, T. A. (1991). Selection of measures of substrate composition to estimate survival to emergence of salmonids and to detect changes in stream substrates. *North American Journal of Fisheries Management*, 11, 339–346.
- Zimmermann, A., Pontbriand, M. C., and Lapointe, M. (2005). Biases of submerged bulk and freeze core samples. *Earth Surface Processes and Landforms*, 30, 1405–1417.

**Appendix A    Site photographs taken at photo documentation points**





**PHOTO POINT 1**  
LOOKING  
UPSTREAM  
TOWARD  
SECTION 4

FEB 2012



SEP 2013



APR 2014

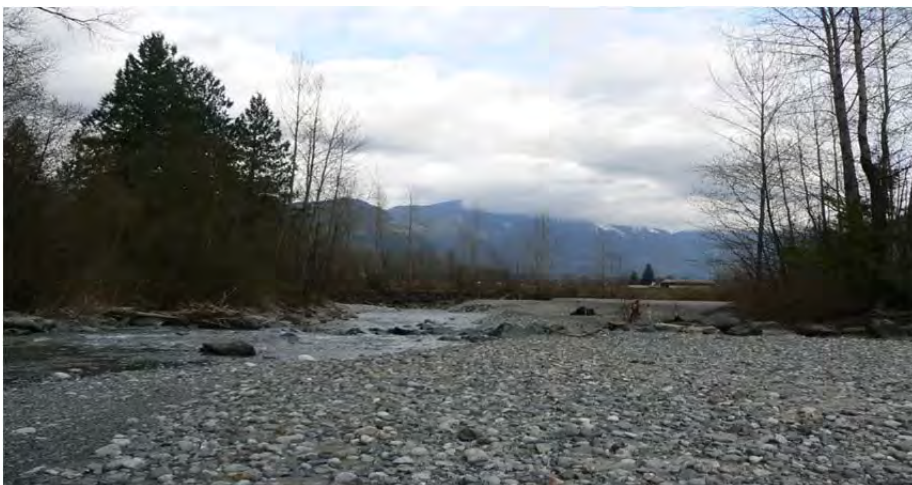


**PHOTO POINT 2  
LOOKING  
DOWNSTREAM  
TOWARD  
SECTION 4**

FEB 2012



SEP 2013

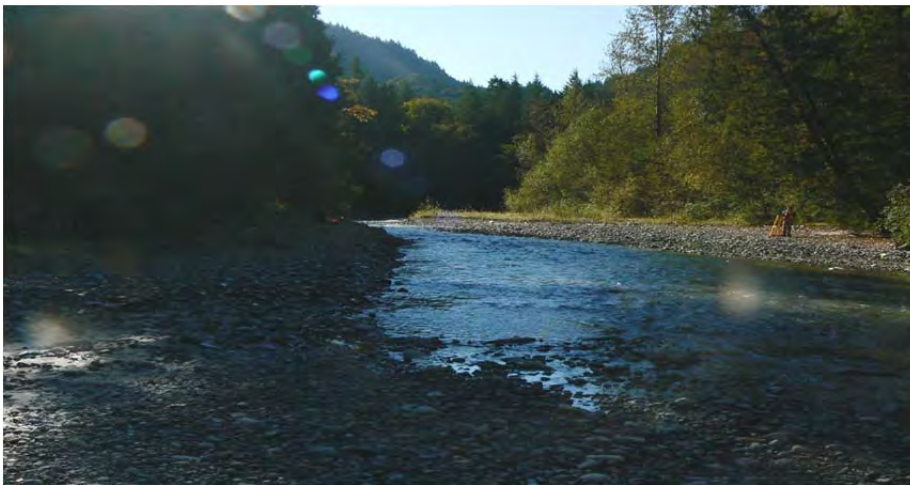


APR 2014



**PHOTO POINT 3**  
LOOKING  
UPSTREAM  
TOWARD  
SECTION 6

FEB 2012



SEP 2013



APR 2014



**PHOTO POINT 4  
LOOKING  
DOWNSTREAM  
TOWARD  
SECTION 6**

FEB 2012



SEP 2013

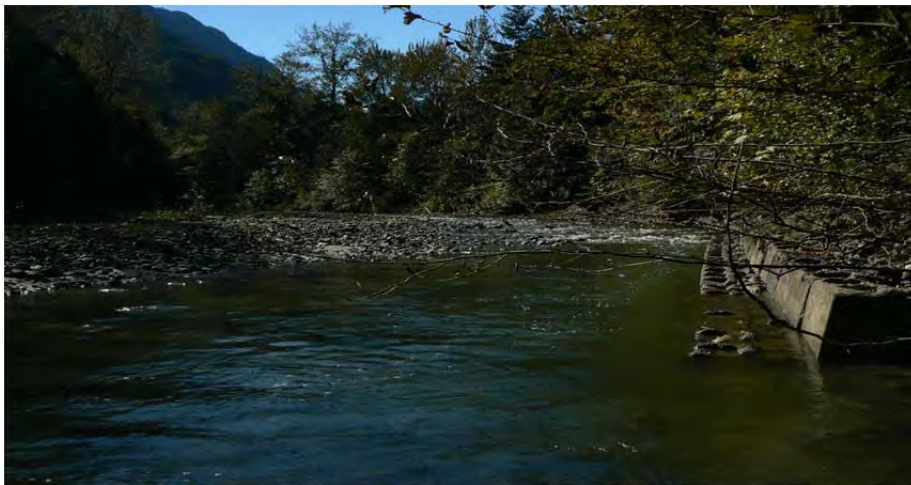


APR 2014



**PHOTO POINT 5**  
LOOKING  
UPSTREAM  
FROM SECTION 8

FEB 2012



SEP 2013



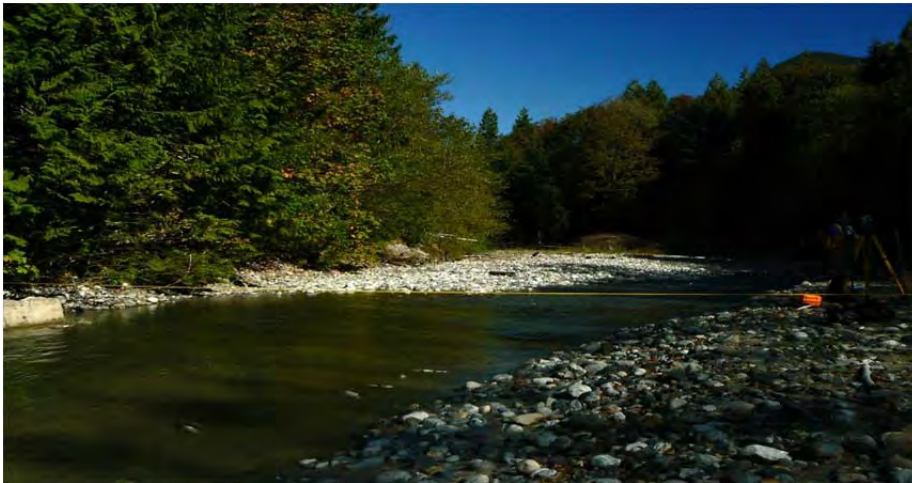
APR 2014



**PHOTO POINT 6**

LOOKING  
DOWNSTREAM  
FROM  
SECTION 8

FEB 2012



SEP 2013



APR 2014



**PHOTO POINT 7  
LOOKING  
DOWNSTREAM  
TOWARD  
SECTION 8**

FEB 2012



SEP 2013



APR 2014



**PHOTO POINT 8**  
LOOKING  
UPSTREAM  
FROM SECTION 9  
TOWARD 10

FEB 2012



SEP 2013



APR 2014





**PHOTO POINT 9**  
LOOKING  
DOWNSTREAM  
TOWARD  
SECTION 9

FEB 2012



SEP 2013



APR 2014

**Appendix B    Example site and sample photographs including grain size distribution**

**XS 4**



PHOTO POINT 1, LOOKING UPSTREAM OF XS 4 (26 SEP 2013)



PHOTO POINT 2, LOOKING DOWNSTREAM OF XS 4 (26 SEP 2013)



XS 4 – L2 (26 SEP 2013)



XS 4 – R1 (26 SEP 2013)

DATE	FLOW (m <sup>3</sup> /s)	WATER CLARITY	TRUNCATED D < 64 mm			N <sub>T</sub>	D > 64
			D ≤ 1	1 < D < 9.5	9.5 ≤ D < 64		
Feb 23, 2012	3.04	Moderate	0%	24%	76%	107	8
Sep 26, 2013	1.16	Clear	0%	29%	71%	55	17
Feb 27, 2014	0.81	Turbid	2%	30%	68%	47	40
Apr 02, 2014	1.03	Moderate	1%	15%	84%	80	59

where; N<sub>T</sub> = TRUNCATED SAMPLE SIZE ( D < 64 mm); D = NUMBER > 64 mm

**XS 6**

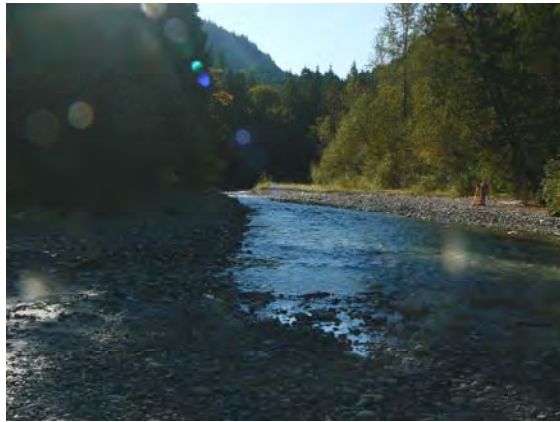


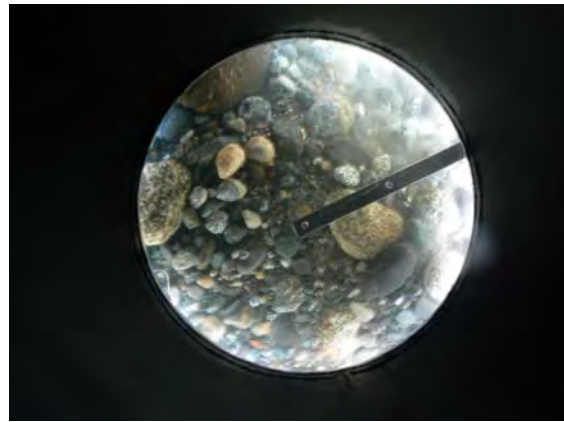
PHOTO POINT 3, LOOKING UPSTREAM OF XS 6 (26 SEP 2013)



PHOTO POINT 4, LOOKING DOWNSTREAM OF XS 6 (26 SEP 2013)



XS 6 – L1 (26 SEP 2013)



XS 6 – R1 (26 SEP 2013)

DATE	FLOW (m <sup>3</sup> /s)	WATER CLARITY	TRUNCATED D < 64 mm			N <sub>T</sub>	D > 64
			D ≤ 1	1 < D < 9.5	9.5 ≤ D < 64		
Feb23, 2012	3.04	Moderate	0%	14%	86%	56	31
Sep 26, 2013	1.16	Clear	5%	24%	71%	77	11
Feb 27, 2014	0.81	Turbid	25%	8%	67%	81	15
Apr 02, 2014	1.03	Moderate	15%	15%	70%	127	19

where; N<sub>T</sub> = TRUNCATED SAMPLE SIZE ( D < 64 mm); D = NUMBER > 64 mm

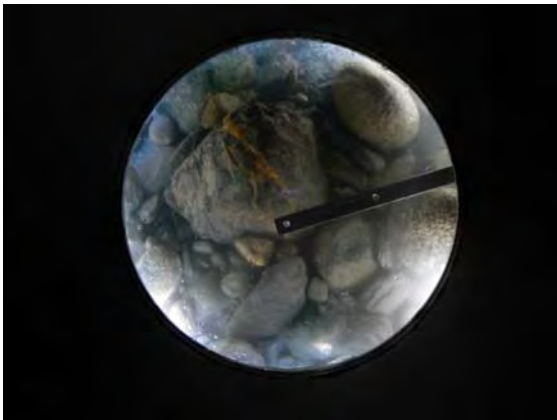
**XS 7**



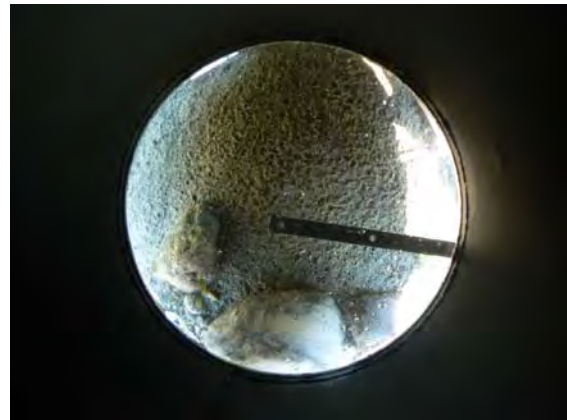
PHOTO POINT 4, LOOKING UPSTREAM OF XS 7 (26 SEP 2013)



PHOTO POINT 4, LOOKING DOWNSTREAM OF XS 7 (26 SEP 2013)



XS 7 – M2 (26 SEP 2013)



XS 7 – R1 (26 SEP 2013)

DATE	FLOW (m <sup>3</sup> /s)	WATER CLARITY	TRUNCATED D < 64 mm			N <sub>T</sub>	D > 64
			D ≤ 1	1 < D < 9.5	9.5 ≤ D < 64		
Feb 23, 2012	3.04	No Data	5%	15%	80%	115	22
Sep 26, 2013	1.16	Clear	30%	23%	47%	56	7
Feb 27, 2014	0.81	Turbid	4%	10%	86%	50	40
Apr 02, 2014	1.03	Moderate	1%	4%	85%	91	34

where; N<sub>T</sub> = TRUNCATED SAMPLE SIZE ( D < 64 mm), D = NUMBER > 64 mm

**XS 8**



PHOTO POINT 5, LOOKING  
UPSTREAM OF XS 8 (26 SEP 2013)

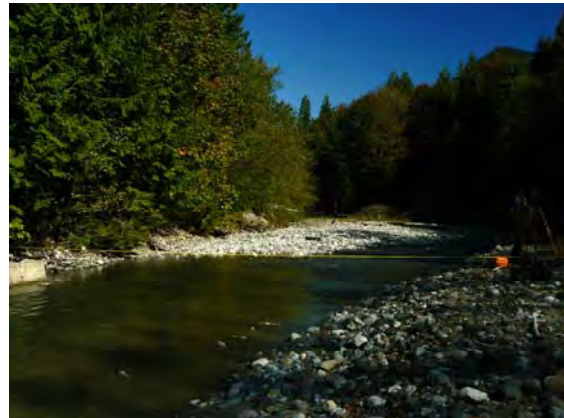


PHOTO POINT 5, LOOKING  
DOWNSTREAM OF XS 8 (26 SEP 2013)



XS 8 – M1 (26 SEP 2013)



XS 8 – R2 (26 SEP 2013)

DATE	FLOW (m <sup>3</sup> /s)	WATER CLARITY	TRUNCATED D < 64 mm			N <sub>T</sub>	D > 64
			D ≤ 1	1 < D < 9.5	9.5 ≤ D < 64		
Feb 23, 2012	3.04	Moderate	31%	28%	41%	95	5
Sep 26, 2013	1.16	Clear	20%	33%	47%	87	7
Feb 27, 2014	0.81	Turbid	54%	2%	44%	81	10
Apr 02, 2014	1.03	Moderate	37%	4%	59%	174	12

where; N<sub>T</sub> = TRUNCATED SAMPLE SIZE ( D < 64 mm), D = NUMBER > 64 mm

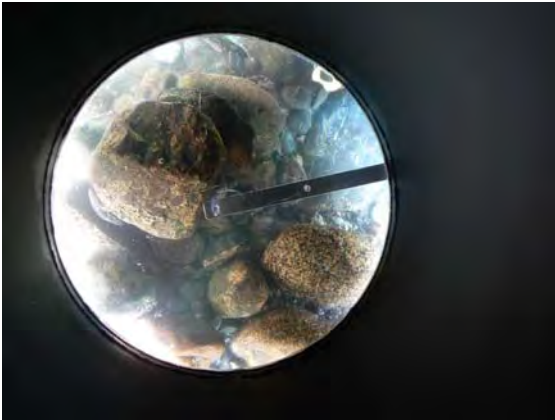
**XS 8.5**



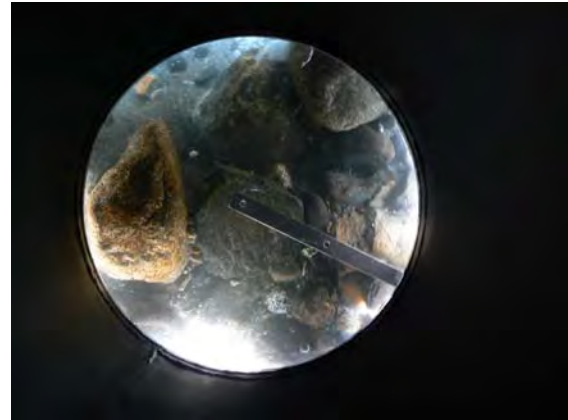
PHOTO POINT 7, LOOKING  
UPSTREAM OF XS 8.5 (26 SEP 2013)



PHOTO POINT 6, LOOKING  
DOWNSTREAM OF XS 8.5 (26 SEP 2013)



XS 8.5 – M2 (26 SEP 2013)



XS 8.5 – R2 (26 SEP 2013)

DATE	FLOW (m <sup>3</sup> /s)	WATER CLARITY	TRUNCATED D < 64 mm			N <sub>T</sub>	D > 64
			D ≤ 1	1 < D < 9.5	9.5 ≤ D < 64		
Feb 23, 2012	3.04	Moderate	-	-	-	-	-
Sep 26, 2013	1.16	Clear	13%	13%	74%	47	24
Feb 27, 2014	0.81	Turbid	4%	4%	92%	50	31
Apr 02, 2014	1.03	Moderate	34%	7%	59%	86	37

where; N<sub>T</sub> = TRUNCATED SAMPLE SIZE ( D < 64 mm), D = NUMBER > 64 mm

**XS 9**



PHOTO POINT 8, LOOKING  
UPSTREAM OF XS 9 (26 SEP 2013)



PHOTO POINT 8, LOOKING  
DOWNSTREAM OF XS 9 (26 SEP 2013)



XS 9 – L1 (26 SEP 2013)



XS 9 – R2 (26 SEP 2013)

DATE	FLOW (m <sup>3</sup> /s)	WATER CLARITY	TRUNCATED D < 64 mm			N <sub>T</sub>	D > 64
			D ≤ 1	1 < D < 9.5	9.5 ≤ D < 64		
Feb 23, 2012	3.04	Moderate	4%	24%	72%	76	19
Sep 26, 2013	1.16	Clear	17%	23%	60%	78	21
Feb 27, 2014	0.81	Turbid	6%	9%	85%	72	22
Apr 02, 2014	1.03	Moderate	1%	19%	80%	88	27

where; N<sub>T</sub> = TRUNCATED SAMPLE SIZE ( D < 64 mm); D = NUMBER > 64 mm



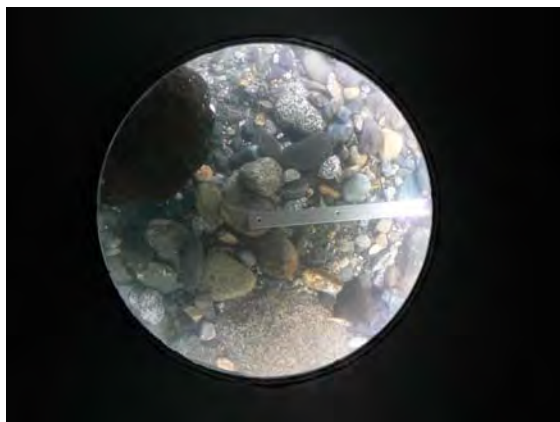
**XS 10**



PHOTO POINT 9, LOOKING UPSTREAM OF XS 10 (26 SEP 2013)



PHOTO POINT 9, LOOKING DOWNSTREAM OF XS 10 (26 SEP 2013)



XS 10 – L1 (26 SEP 2013)



XS 10 – R2 (26 SEP 2013)

DATE	FLOW (m <sup>3</sup> /s)	WATER CLARITY	TRUNCATED D < 64 mm			N <sub>T</sub>	D > 64
			D ≤ 1	1 < D < 9.5	9.5 ≤ D < 64		
Feb 23, 2012	3.04	Moderate	8%	20%	72%	79	25
Sep 26, 2013	1.16	Clear	3%	21%	76%	99	29
Feb 27, 2014	0.81	Turbid	29%	13%	69%	68	23
Apr 02, 2014	1.03	Moderate	17%	12%	71%	110	43

where; N<sub>T</sub> = TRUNCATED SAMPLE SIZE ( D < 64 mm); D = NUMBER > 64 mm